

LEARN ABOUT:

The stamp mill where 100 stamps crushed rock to free the gold

The fire in neighboring Argonaut Mine, which took 47 lives in spite of rescue efforts from the Kennedy Mine

The water in the Kennedy Mine

SEE:

The 3-story multipurpose Mine Office building with its Retort, Assay, Pay Rooms and third story bedrooms

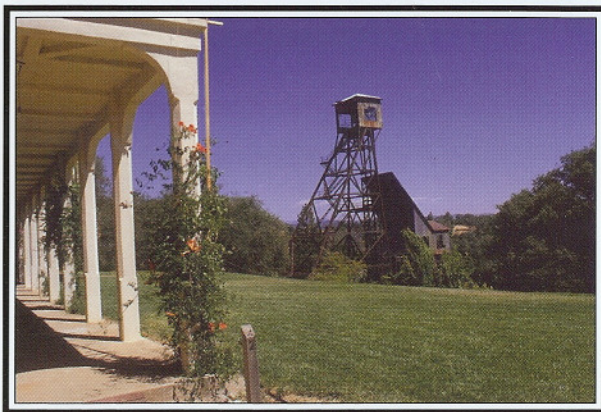
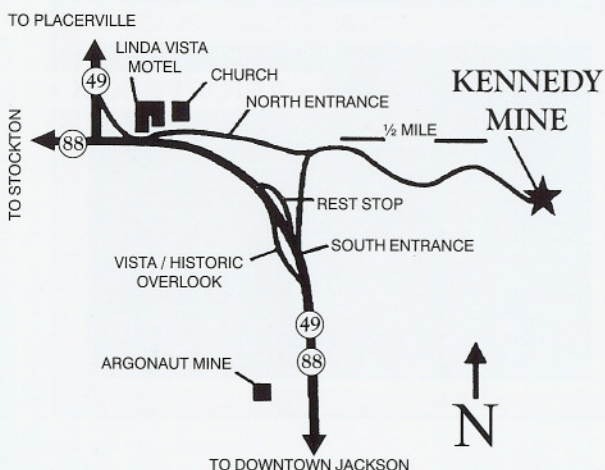
The Change House with simulated underground mining tunnel, rock and mining displays, gift shop and video showing the Kennedy Mine in operation

Jackson, California sits in the foothills of the Sierra Nevada. It is in the heart of the famous "Mother Lode" country and is approximately halfway between Placerville and Sonora on historic State Highway 49.

The Kennedy Mine is located near the intersection of State Highways 49 and 88. Jackson is a 42 mile drive east of Sacramento on Highway 16, then south on Highway 49, or a 40 mile drive east of Stockton on State Highway 88.

For further information, including dates and times, call or write:

KENNEDY MINE FOUNDATION
P.O. Box 684, Jackson, CA 95642
(209) 223-9542
kmmine@volcano.net
www.kennedygoldmine.com



GUIDED TOURS

Weekends

The mine is open to individuals or groups, Saturdays and Sundays from March through October. Hours are 10:00 am to 3:00 pm.

School Groups

Schools and other youth group tours are available with advance reservations.

Bus and Specialty Tours

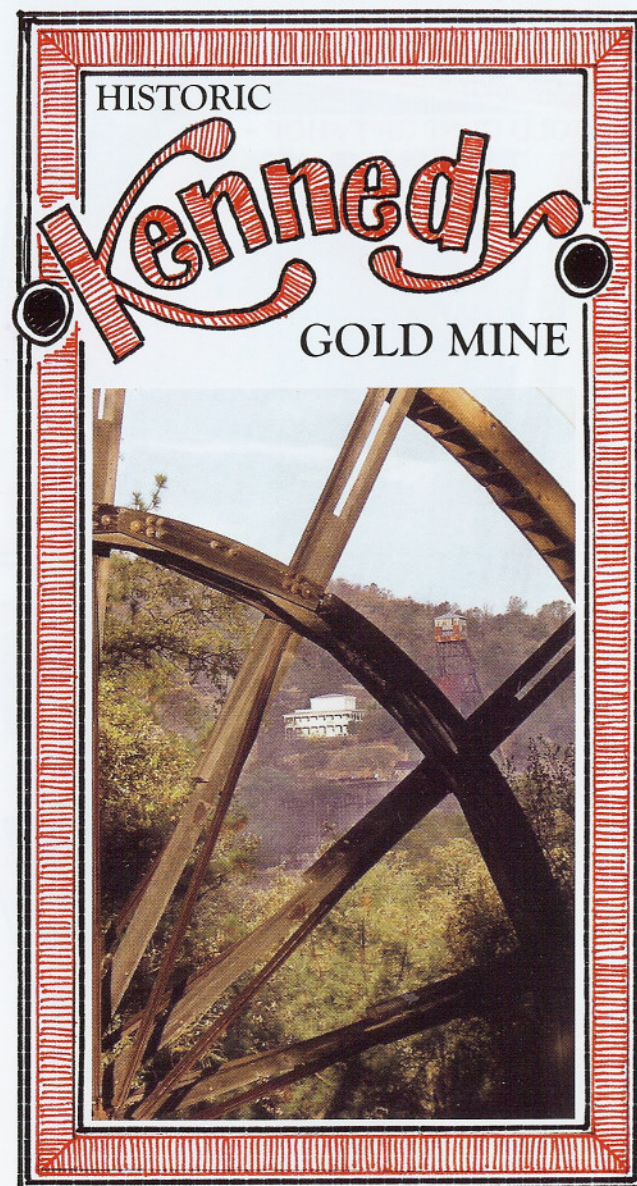
Available any day year-round with advance reservations. Regular tours take about 90 minutes and can be tailored to accommodate the time constraints of various groups.

Group Outings

Bring your group to the Mine for picnics or other outdoor events. Kitchen facilities and picnic tables are available.

LIVE PRODUCTIONS UNDER THE STARS

Experience a play in the amphitheatre during June, July and August performed by Main Street Theatre Works.



• TOUR HISTORIC BUILDINGS •

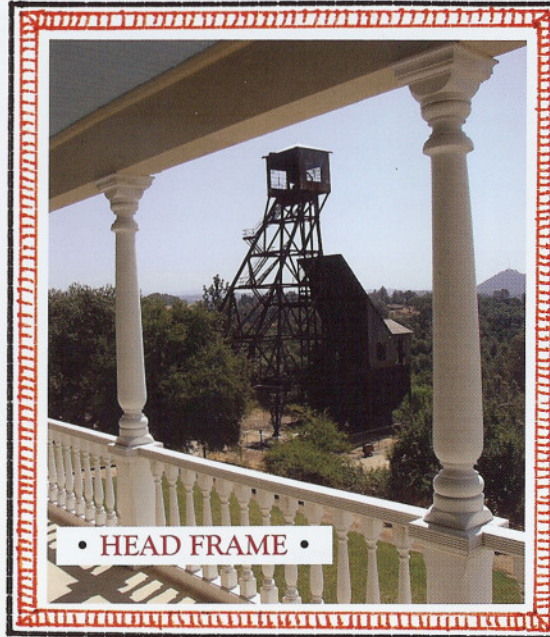
• WALK WHERE MINERS WALKED •

• EXPERIENCE REAL STORIES •

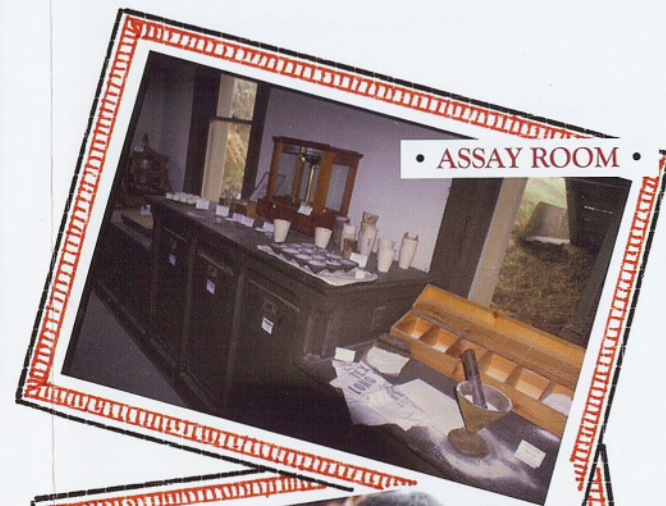
• GOLD DUST GIFT SHOP •



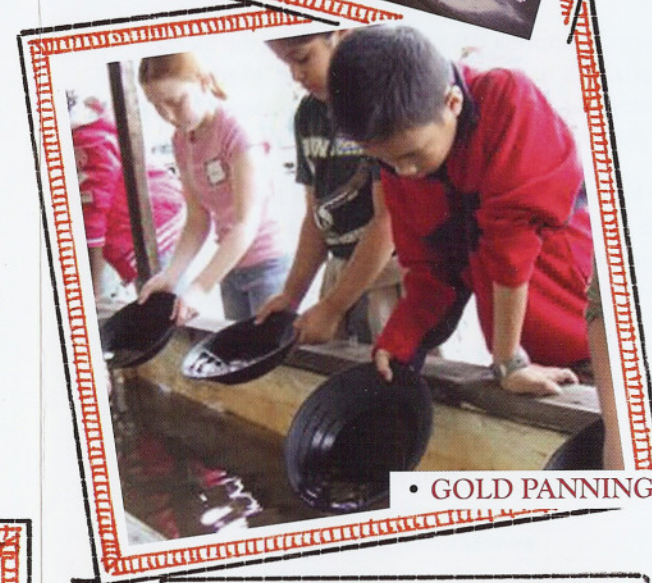
• HEAD FRAME •



• ASSAY ROOM •



• GOLD PANNING •

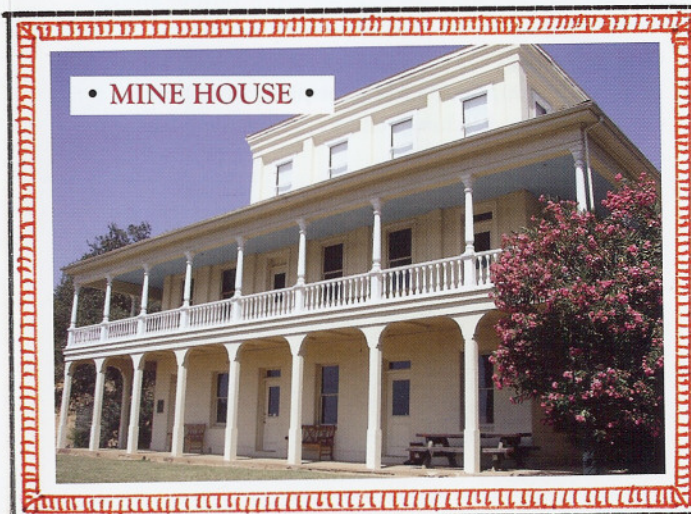


• PAY ROOM •

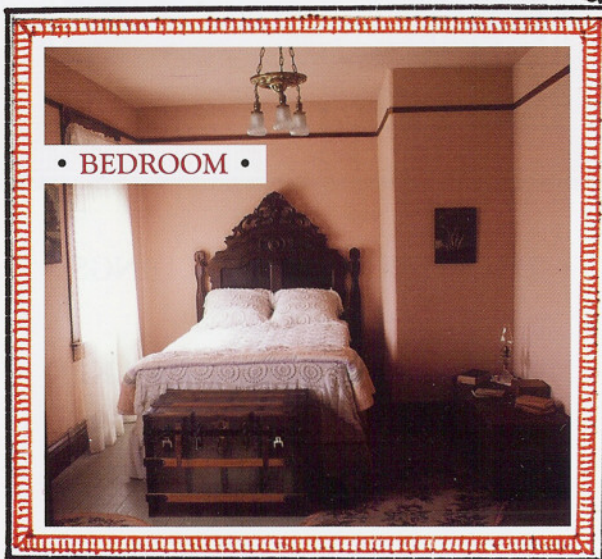


The head frame as seen from the balcony of the Mine Office is 135 feet in height and sits over a 4764-foot vertical shaft. The Kennedy was the deepest mine in North America at 5912 vertical feet when it closed during World War II.

• MINE HOUSE •



• BEDROOM •



• RETORT ROOM •

