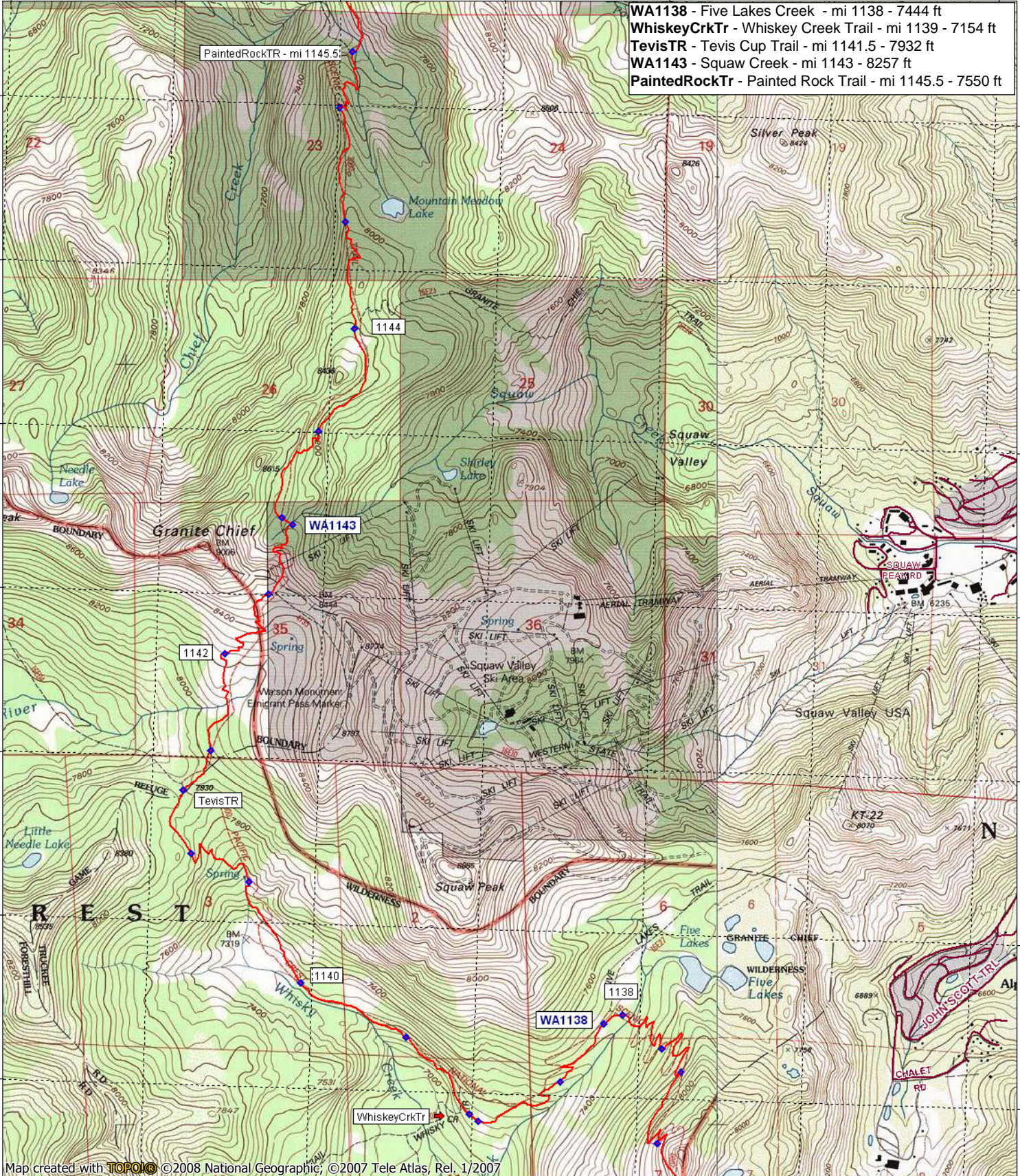


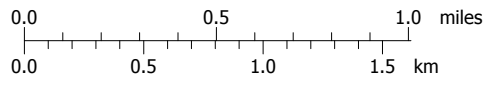
733000m E. 734000m E. 735000m E. 736000m E. 737000m E. WGS84 Zone 10S 739000m E.

**WA1138** - Five Lakes Creek - mi 1138 - 7444 ft  
**WhiskeyCrkTr** - Whiskey Creek Trail - mi 1139 - 7154 ft  
**TevisTR** - Tevis Cup Trail - mi 1141.5 - 7932 ft  
**WA1143** - Squaw Creek - mi 1143 - 8257 ft  
**PaintedRockTr** - Painted Rock Trail - mi 1145.5 - 7550 ft



Map created with **TOPOIC** ©2008 National Geographic, ©2007 Tele Atlas, Rel. 1/2007

734000m E. 735000m E. 736000m E. 737000m E. WGS84 Zone 10S 739000m E.



contour interval 40 feet  
1:31,680 1" = 1/2 mile  
Copyright 2009 Halfmile Media  
www.pctmap.net

