



Smart Gardening

for birds, bees, butterflies and You!



Our yards can be welcoming not only to family and friends but also to local wildlife. By creating Smart Gardening landscapes we expand the “[urban wildlife corridors](#)” in our neighborhoods - one yard at a time. [Be your own Carbon Sink!](#)

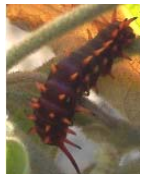
Smart Gardening is eco-friendly while saving you time and money!

1. **Planting Smart Plants:** The foundation of a Smart Gardening landscape is planting local native plants – to restore natural balance. A seasonal succession of native plant flowers, berries and fruit is best for our native birds, bees, butterflies, and other beneficial insects.



Dutchman's Pipe [Aristolochia californica](#)

2. **Remove Invasive Plants:** Invasive plants can out-compete native plants and escape our yards causing major damage to our public lands. Such as [Vinca Major](#), [Pampas Grass](#), and [Chinese Tallow](#).



Pipevine Swallowtail Caterpillar
(Pipevine leaves are its Host plant)

3. **Use less chemicals:** Spraying with chemicals removes important protein sources (insects!) for wildlife. Most birds need to eat insects and spiders for reproductive success. Using less chemicals also save\$ you money. (If you do spay your garden, go organic!)

4. **Use less water:** Group plants by their water needs (watering zones), minimize lawn, mulch leaves, and use rainwater to your advantage.

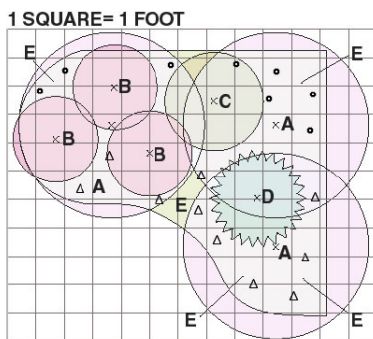
5. **Build habitat:** Providing water, shelter, and food sources for wildlife can make an important difference! A Smart Garden even lets leaves do the fertilizing, feeding everything from birds to micro-organisms... and saves you time!



Pipevine Swallowtail
[Battus philenor](#)

Sample Collection of [Valley Habitat Heroes!](#)

See [Valley Habitat Heroes Plant list](#) for a list of indigenous plants that attracting birds, bees, and butterflies to home gardens!



- A Western Redbud [Cercis occidentalis](#)
- B Silver Bush Lupine [Lupinus albifrons](#)
- C Whiteleaf Manzanita [Arctostaphylos viscida](#)
- D Toyon (Christmas Berry) [Heteromeles arbutifolia](#)
- E Pine Bee Flower [Phacelia imbricata](#)



Elderberry Farms
Native Plant Nursery
American River Ranch,
2140 Chase Drive,
Rancho Cordova, CA
95670