

Waterton Wildflower Festival

June 15 - 20, 2017

Experience Nature at its Best

Photo: Santisouk Phommachakr
Participant in 2016 Photo Contest

Wildflower Capital of Canada

Wildflowers – Walks – Talks

Photography – Geology – Natural History

Arts – First Nations – Artisan Fair



Parks Canada
Parcs Canada



1-877-780-1998

watertonwildflowers.com
Waterton Lakes National Park

Welcome to the 14th Annual Waterton Wildflower Festival

Pasque flower, commonly known as Prairie Crocus with Hover Fly ~ © Ian Wilson - Waterton Wild

TABLE OF CONTENTS

Welcome **3**

Why is Waterton the Wildflower Capital of Canada? **3**

John Russell **4**

Rare Plants of Waterton **5**

Protecting Landscapes **6**

Authors at the Festival **6**

Turning the Tide Against Invasive Plants **6**

Restoration Crew **7**

Rejuvenating Flames **7**

Get Up Close **8**

Upgrading Facilities **8**

Fighting for Five Needle Pines **8**

Where the Wild Things Go: Wildlife Movement Project **9**

Protecting the Park from Aquatic Invasive Species **9**

Festival Special Events and Programs **10**

Festival at a Glance **12**

Map of the Village of Waterton **13**

Registration/Information **13**

Festival Schedule **14 – 19**

Meet the Presenters **20**

What's Next **22**

WELCOME



Thanks for coming to the 14th annual Waterton Wildflower Festival! The Wildflower Festival was the 2016 finalist of the Alto Award in the category: Outstanding Sustainable Tourism. You are in for a treat as you wander the Wildflower Capital of Canada.

The festival celebrates the values of this national park and helps participants to cherish the natural wonders that are here.

As a program of The Waterton Park Community Association, the festival blooms a little bigger and brighter each year, and we must shout our thanks to wonder-

ful community partners and supporters like Parks Canada, The Nature Conservancy of Canada, the Chamber of Commerce and other local groups.

Come to the Waterton Community Centre, visit the Artisan Fair and meet other nature lovers.

Mariajose Martinez
Michaela Enzmann
Marie Grant
Frank Weinschenk

New This Year

CELEBRATING CANADA 150

To celebrate the 150th anniversary of Canadian Confederation, entry will be free to all Parks Canada's special places in 2017.

Parks Canada is looking forward to welcoming more visitors to our national parks, and expect popular parks such as Waterton Lakes National Park to be very busy this year. To ensure visitors have an enjoyable and safe experience, Parks Canada encourages planning trips well in advance. Visitors should book camping and accommodations, and check 511.alberta.ca before setting off for current road conditions in the park. Waterton Lakes' Facebook (www.facebook.com/WatertonLakesNP) and Twitter (@WatertonLakesNP) will have updated information as well. To avoid experiencing delays, the best times to visit Waterton this year will be during weekdays, not weekends (especially long weekends). Visiting in early morning and late afternoon/evenings will provide more parking and less traffic congestion, and better light for photography.

Get Involved in the Festival

This year we are opening up for volunteers. There are various opportunities to get involved and to learn more about the Wildflower Festival and the Wildlife Weekend. Express your interest as soon as possible regarding the following opportunities.

- Distribution of information material before and during the festival.
- Assisting with set up/taking down of signage, chairs and tables, and other materials before and after the festival.
- Assisting at reception and registration desk: greeting and assisting the public attending the event, patrons sign-in, waiver signing, ticket sales, merchandise sales, helping with car pooling, accompanying groups to event locations, monitor coffee table and fill up if necessary, clean-up after an event.
- Oversee kids activities.
- Act as a mascot (be dressed up as a flower and engage and inform the public and business owners in Waterton townsite).

Contact Michaela at coordinator@watertonfestivals.org



Stop and Smell the Roses

Stop and smell the flowers, but please don't pick them! We encourage you to get out and explore the park during the festival, but please keep these important principles in mind. Leave what you find. It's OK to stop and smell the flowers, but please leave them (along with other natural objects) where you found them for the next visitor to enjoy. Please do not trim the vegetation surrounding your floral photo subjects. Take only pictures; leave only footprints. Respect the wildlife and give them space. Observe the wildlife from a distance and do not follow, approach or attempt to feed them. Even the most careful hiking boot placement can crush delicate greenery. Please stay on established trails on your journeys through the park.

WHY IS WATERTON THE WILDFLOWER CAPITAL OF CANADA?

Everyone who attends the Wildflower Festival must ask this question at least once! Every year you can discover the answer a little more fully for yourself, but here's a place to start to understand the reasons we can make this claim.

Geologic events resulted in Waterton Lakes National Park being a mountainous area that directly abuts the prairies. The park is located at a point where prairie plants from the Great Plains to the east overlap with Rocky Mountain plants from the north, and intermountain plants from the west. Forty-five different vegetation communities occur in the park including grasslands, shrublands, wetlands, lakes, spruce-fir, pine and aspen forests, and alpine meadows. This diversity provides suitable habitat for over 1,000 species of vascular plants within the park's boundaries. The overall plant community ranges in size from microscopic aquatic diatoms to stately Douglas fir trees.



15 min. from Waterton Park
525 Main St. (Hwy. 5)
Mountain View, AB T0K 1N0
info@bearcountryinnandsuites.ca
bearcountryinnandsuites.ca
403-653-1992


A Clean, Quiet, Affordable Little Inn, At The Historic Barn Store




A Gift, Grocery, Fuel, Food & Ice Cream Stop

- Full Kitchen Suites sleep 3-9 guests
- Regular Rooms w/1 to 2 queen beds
- Open Year Round / off-season rates
- Outdoor Picnic areas w/ BBQ grills
- Continental Breakfast • Satellite TV
- Internet WiFi • Multi-Level Scenic Views

The first FREE community owned Wi-Fi network in all of Canada's National Parks



KEEPING YOU CONNECTED!



CONNECT TO WATERTONFREEWIFI OR SUBSCRIBE TO WATERTON WIFIBER
INFO@WCBN.CA
403.859.2042



John ~ © Stephen Harrington Photography ~ <http://shphotography.myportfolio.com>

JOHN RUSSELL

1944 – 2016

On the snowy Thanksgiving morning of October 10, a river of ravens swept down and carried John Russell's precious soul to Valhalla. A lover of nature and a studied observer of its ways, John Russell spent his 72 years in a long embrace with the natural world. He spent much of his life rooted in the landscape of the Waterton area. But he also studied the caribou of Canada's north. Biologist Ron Jakimchuk writes, "I hired John as a biologist in 1971 into my company, Renewable Resources Consulting Services, to join a study of the Porcupine caribou herd in northern Yukon. ... During the course of our relationship we became friends as well as colleagues and shared many a day afield flying surveys, or living in a wall tent at -30 degrees on a caribou study north of Grande Cache." Ron continues, "I learned a lot from John and his deep knowledge of the natural world, and a lot about what a fine man he was – trustworthy, capable and thoughtful. His powers of observation were enhanced, I'm sure, by his lifelong spiritual quest. His personality combined his aesthetic appreciation and technical skill as a biologist. He was student of everything in the natural world. "One of his significant achievements while employed by my company was the census of the George River caribou herd in northern Quebec at a historic high of some 750,000 animals, and today a mere remnant. That work, among his many other contributions, will remain as an important milestone in the history of arctic caribou populations."

Ecologist Cristina Eisenberg, who has studied the interconnectedness of wolves, elk, grassland and fire in Waterton for the past 10 years says, "You taught us that life and death are part of the same continuum, whether thinking ecologically when examining the fresh carcass of a wolf-killed elk on the prairie, or when considering our human lives metaphysically. ... On a finer scale, you taught me and my field crew to appreciate the beauty of an intact prairie by patiently helping us identify native grasses, taking special zeal in showing us how to parse the taxonomy of the more obscure ones."

John Russell was generous with his deep knowledge of the region. As a respected field guide, an engaging teacher and a popular speaker, outings with John were cherished inspirational experiences. He was gentle and kind, inquisitive and joyful. To go for even a short walk with John in this area that he knew so well was a privilege that will not be forgotten. He seemed to know every blade of grass and flower intimately and where they would appear from year to year in the eternal cycle of life. Ron Jakimchuk concludes, "Here was a man who, in the 21st century, could darn his own socks, sew on a button, write a book on caribou, share mystical experiences, and build a bathtub for grizzly bears." And that laugh, what a laugh.

John was a cornerstone of both the Wildflower and Wildlife Festivals. His presence will be felt through time as each year we celebrate the wonders of Waterton's natural world.



I learned a lot from John and his deep knowledge of the natural world, and a lot about what a fine man he was – trustworthy, capable and thoughtful. His powers of observation were enhanced, I'm sure, by his lifelong spiritual quest. His personality combined his aesthetic appreciation and technical skill as a biologist. He was student of everything in the natural world.



RARE PLANTS OF WATERTON

Waterton Lakes National Park is home to many provincially, globally and nationally rare plant species.

Watch List Plants

These species are common in WLNP and the immediate region but provincially, nationally, and in some cases, globally are uncommon or rare. These species are sufficiently common in the WLNP area that they are not being tracked in Alberta. However, they have been placed on a Watch List for Alberta to recognise their restricted geographic range:

Pathfinder - *Adenocaulon bicolor*
Yellow angelica - *Angelica dawsonii*
Elegant aster - *Aster engelmannii*
Oregon grape - *Berberis repens*
Woodland brome - *Bromus vulgaris*
Thorough-wax - *Bupleurum americanum*
Mariposa lily - *Calochortus apiculatus*
Elk sedge - *Carex geyeri*
Stiff yellow paintbrush - *Castilleja lutescens*
Snowbrush - *Ceanothus velutinus*
Alpine spring beauty - *Claytonia megarhiza*
Douglas hawthorn - *Crataegus douglasii*
Hooker's fairybells - *Disporum hookeri*
Mountain gentian - *Gentiana calycosa*
Woollen breeches - *Hydrophyllum capitatum*
Sandberg's wild parsley - *Lomatium sandbergii*
Smooth woodrush - *Luzula hitchcockii*
Nuttall's sandwort - *Minuartia nuttallii*
Western sweet cicely - *Osmorhiza occidentalis*
Mountain-lover - *Pachystima myrsinites*
Blue beardtongue - *Penstemon albertinus*
Large-flowered beardtongue - *Penstemon lyallii*
Bracken fern - *Pteridium aquilinum*
Sticky currant - *Ribes viscosissimum*
Merten's saxifrage - *Saxifraga mertensiana*
Narrow-petaled stonecrop - *Sedum stenopetalum*
Arctic butterweed - *Senecio conterminus*
Beargrass - *Xerophyllum tenax*

Globally Rare

[G1 or G2] (based on 1997 data)

Scented Pussytoes - *Antennaria aromatica*
Peculiar Moonwort - *Botrychium paradoxum*
Three-lobed Fleabane - *Erigeron trifidus*

Nationally Rare

[N1 or N2] (based on 1997 data)

Gyer's onion - *Allium geyeri*
Jones' columbine - *Aquilegia jonesii*
Long-leaved arnica - *Arnica longifolia*
Ascending moonwort - *Botrychium ascendens*
Dainty moonwort - *Botrychium crenulatum*
Western moonwort - *Botrychium hesperium*
Waterton moonwort - *Botrychium x watertonense*
Large-flowered brickellia - *Brickellia grandiflora*
Blackened sedge - *Carex epapillosa*
Payson's sedge - *Carex paysonis*
Yellow paintbrush - *Castilleja cusickii*
Small-flowered hawkbeard - *Crepis occidentalis*
Rocky Mountain douglasia - *Douglasia montana*
Dense-leaved draba - *Draba densifolia*
Willowherb - *Epilobium mirabile*
Front Range fleabane - *Erigeron lackschewitzii*
Dwarf fleabane - *Erigeron radicans*
Gayophytum - *Gayophytum racemosum*
Mountain hollyhock - *Iliamna rivularis*
Bolander's quillwort - *Isoetes bolanderi*
Dwarf lewisia - *Lewisia pygmaea*
Prairie lupine - *Lupinus lepidus*
Showy oniongrass - *Melica spectabilis*
Baby-blue-eyes - *Nemophila breviflora*
Pygmy poppy - *Papaver pygmaeum*
Lyll's scorpionweed - *Phacelia lyallii*
Ninebark - *Physocarpus malvaceus*
Slender knotweed - *Polygonum engelmannii*
Purple rattlesnake-root - *Prenanthes sagittata*
Alpine buttercup - *Ranunculus verecundus*
Few-leaved ragwort - *Senecio cymbalarioides*
American chickweed - *Stellaria americana*
Blunt-sepaled starwort - *Stellaria obtusa*
Umbellate starwort - *Stellaria umbellata*
Alpine townsendia - *Townsendia condensata*
Mountain trisetum - *Trisetum montanum*
Awnless trisetum - *Trisetum wolfii*
Canary violet - *Viola praemorsa* var. *linguaeifolia*

Did You Know....*

- There are four different ecoregions in Waterton Lakes National Park (parkland, montane, subalpine, and alpine).
- There are 45 vegetation communities in the park, 16 of which are considered significant because they are rare, or fragile and threatened.
- More than 50% of all wildflower species found in Alberta grow in Waterton Lakes National Park.
- 104 species of plants in Waterton are listed as rare in Alberta. Of those, 28 are found only in the Waterton area. [see list]
- Three of the park's flower species are globally rare. [see list]
- 38 of the park's flower species are nationally rare. [see list]
- A number of species that are common in Waterton and the immediate region, are uncommon or rare elsewhere.

* from www.pc.gc.ca/waterton



A "focused" attendee during one of the sessions at last year's festival.

PROTECTING LANDSCAPES

For thousands of years, Indigenous people visited the Waterton area to hunt, fish, and gather plants. Archaeologists have found evidence of their encampments throughout the park. Fredrick W. Godsall, a Pincher Creek rancher, was the first to recommend the establishment of what is now Waterton Lakes National Park. The original park became Canada's 4th national park in 1895, protecting the lakes and spectacular scenery in a 140 square kilometre [54 square mile] area. Today, the park is 505 square kilometres [195 square miles].

Although the park is small, many significant features are protected within its boundaries. This includes some of the oldest mountains in the Rockies, unique geological features, critical wildlife corridors, a rich cultural history, and a diversity of flora and fauna.

Across the border to the south is Glacier National Park in Montana. Together, the parks form the Waterton-Glacier International Peace Park, a UNESCO World Heritage Site, which ensures and celebrates cooperation between jurisdictions. West of Waterton is Akamina-Kishinena Provincial Park and the Flathead Provincial Forest in British Columbia. North and east of the park are ranchlands, provincial forestry lands and the Blackfoot Nation. Landowners, Indigenous peoples, municipal, provincial, and state governments as well as many non-profit organizations are working together to develop cooperative land management strategies to protect not only the park, but also the surrounding landscapes.

AUTHORS AT THE FESTIVAL

The Festival is honoured to have several authors as presenters. Come see the books at the Waterton Community Centre and possibly get the authors to sign your copy of their books.



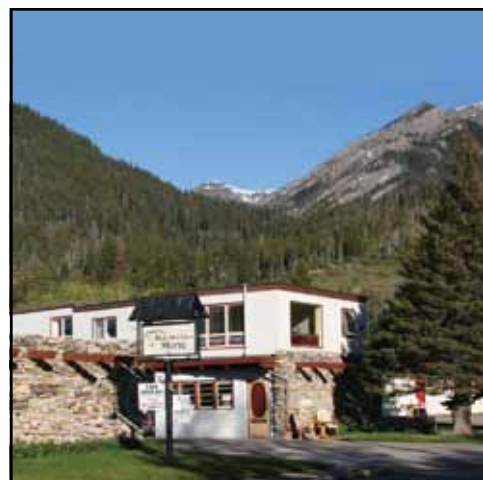
Garden columnist and horticulturist, Lyndon Penner has the perfect book for the Festival, *Native Plants for the Short Season Yard*. Don't miss out on one of Lyndon's field sessions or perhaps take in his early morning hike Wildflowers at Sunrise.



Authors, Jacinthe Lavoie and Ian Wilson also have some great books perfect for Waterton, "*Waterton Wild*". Come hear their evening presentation on Monday June 19th at the Falls Theatre at 7:30pm which is open to all or register to take in one of the several field sessions they lead through out the week.



Charlie Russell, local naturalist known for his study of grizzlies, has written books including *Grizzly Season*. He has also been the subject of two documentaries, *Walking with Giants* and *Bear Man of Kamchatka*. Come meet Charlie and get a signed copy of one of his books.



Clean • Simple • Affordable

 **BEAR MOUNTAIN MOTEL**

208 Mount View Road
Waterton Park, AB T0K 2M0
T 403-859-2366
www.BearMountainMotel.com

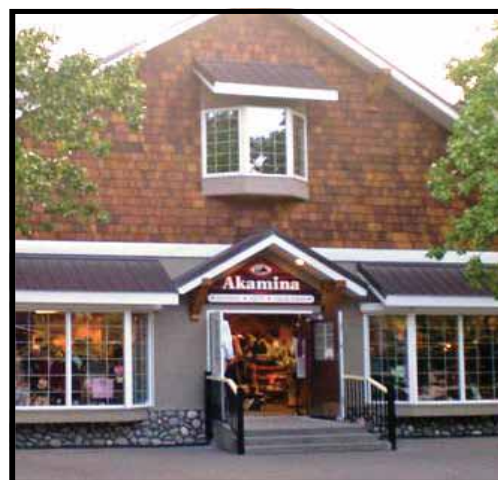
TURNING THE TIDE AGAINST INVASIVE PLANTS

Non-native plants are those that were brought here from somewhere else. Many are a threat to the natural environment as they can quickly invade and out-compete native species. Because they have been introduced and are not growing in their native environment, few natural controls such as insects, disease and predators limit their spread. Some non-native species even secrete poisons from their roots that kill or displace native plants. There are more than 100 non-native plants identified in Waterton Lakes National Park.

As native plants are reduced, the quality of wildlife habitat is affected. As prolific seed producers, non-native species have the potential to spread locally, regionally and even across continents. Control of these species is one of the most urgent concerns in protecting Waterton's wonderful wildflowers. If you'd like to help Parks Canada control non-native species by adopting a patch, please see "Get Up Close" for volunteer opportunities.

In 2016, Parks Canada announced the Blakiston Fan in Waterton Lakes National Park was identified as critical habitat under the Species at Risk Act to protect the Endangered half-moon hairstreak butterfly. Characteristics of this butterfly's critical habitat include larval host plants for breeding, nectar host plants for food, and other physical features essential for the butterfly's life cycle completion. Larval host plants on the Blakiston Fan include the silky lupine and silvery lupine, and nectar host plants include yellow buckwheat and Missouri goldenrod. A recovery strategy for the butterfly is in place with the goals of reducing the spread of invasive non-native species such as spotted knapweed. You can help by staying on established trails and roadways in the Blakiston Fan.

These 12, the 'dirty dozen,' are the most invasive and easily identifiable. Keep a look out for these species. Report their location to the Festival Headquarters.



 **Akamina**
CLOTHING • GIFTS • COLLECTIBLES

*T-Shirts & Sweatshirts
Unique Jewellery
Canadian Gifts
Maple Syrup
Books of all Kinds*

Main Street, Waterton Park, Alberta
t 403.859.2361

Invasives



Leafy Spurge
~ *Euphorbia esula*

B. Rice | The Nature Conservancy



Yellow Chamomile
~ *Anthemis tinctoria*

www.kuleuven-kortrijk.be/bioweb



Orange Hawkweed
~ *Hieracium aurantiacum*

Parks Canada



Baby's Breath
~ *Gypsophila paniculata*

Parks Canada



Dalmatian toadflax
~ *Linaria angustifolia*

Parks Canada



Yellow Hawkweed
~ *Hieracium* spp.

Marric Hill



Spotted Knapweed
~ *Centaurea maculosa*

Parks Canada



Scentless Chamomile
~ *Tripleurospermum inodorum*

Michael Brown



Wild Caraway
~ *Carum carvi*

ESRD



St. John's Wort
~ *Hypericum perforatum*

B. Rice | The Nature Conservancy



Blue Weed
~ *Echium vulgare*

Parks Canada



Hound's-Tongue
~ *Cynoglossum officinale*

Parks Canada

Photos courtesy Alberta Sustainable Resource Development unless otherwise noted.

RESTORATION CREW

Every summer, Parks Canada hires a crew whose job it is to scour the meadows, hillsides and roadsides in the park and identify and remove invasive species using a variety of techniques. Thanks to their hard work and dedication, Waterton's wildflower legacy is being restored. The restoration crew and volunteers also gather seeds from native plants, propagate them and replant them into disturbed areas.



Restoration Crew ~ © Parks Canada

REJUVENATING FLAMES

Managing park ecosystems requires adaptability, good science, and lateral thinking. Management strategies change as our understanding of the workings of ecosystems increases. One strategy is the reintroduction of fire into the landscape.



When Waterton Lakes National Park was established in 1895, society viewed fire as destructive and a great deal of effort went into preventing and extinguishing grassland and forest fires. The result was that an estimated 30 per cent of the park's grasslands were lost to the spread of shrubs and trees. The remaining grasslands built up a heavy load of dead and dry material.

Now, science and knowledge of traditional practices have helped us realize that fire is an essential part of the ecosystem. Parks Canada carries out prescribed fires to restore native vegetation. The dead and dry material in the grasslands becomes rich ash, which feeds renewed plant growth. Burning the dead grass and branches also reduces the risk of uncontrolled, damaging wildfires, which could threaten people and facilities in the park and on our neighbours' ranchlands.

In April 2017, Parks Canada successfully ignited 700 hectares in the Eskerine prescribed fire to restore native prairie by reducing aspen and evergreen expansion onto grasslands. In 2016, fire management specialists continued this important work in the Blakiston Valley and on Sofa Mountain to restore whitebark pine habitat. Last fall, Parks Canada planted 1,000 disease-resistant seedlings on Sofa Mountain. Staff planted the seedlings in an area burned by prescribed fire [see "Fighting for Five Needle Pines" for more on this exciting project].

Trained fire management specialists carry out these prescribed fires only when a set of predetermined conditions is met relating to weather, terrain, soil moisture, fire behaviour, fire control, and smoke management. Parks Canada has over 30 years of experience reintroducing fires onto the landscape in national parks. Well-planned prescribed fires help sustain fire-dependent ecosystems.

There are many other fascinating scientific activities taking place in Waterton Lakes National Park. To learn more, visit the website at www.parksCanada.ca/waterton and click on 'Park Management.' You can also attend the Waterton-Glacier Science and History Day on July 25, 2017, which is held in Glacier National Park this year, to learn more about current and recent research projects in the two parks.



Restoration Crew ~ © Parks Canada

GET UP CLOSE



Watering seedlings ~ © Parks Canada

Waterton Lakes National Park, Alberta Seasonal Volunteer

No experience necessary

Would you like a behind-the-scenes park experience? Do you love the outdoors, wildflowers, wildlife and/or learning new technology? Would you like to contribute to the restoration, monitoring and presentation of native plants in the park? If so, volunteering is the perfect opportunity for you.

Come join Parks Canada's team of over 600 volunteers who donate their time and energy to help with planting native plants in restoration projects, native plant demonstration gardens, species counts, controlling non-native plants, seed collection and many non-plant projects. In 2016, Parks Canada had a record year for volunteers who doubled the contributed hours from the year before. Citizen science, the Christmas

Bird Count and Adopt-a-Patch were among the most popular volunteer programs. Let's do it again in 2017! To celebrate Canada 150, Parks Canada is hosting two special BioBlitzes on butterflies and on mushrooms.

For more information about individual and group volunteer projects, please visit www.parksCanada.ca/waterton-volunteer, phone 403-859-2224, or email dianne.pachal@pc.gc.ca. On the website, you can sign up for a project or to receive e-mail notifications of volunteer news, projects and events.

UPGRADING FACILITIES

Potential Impacts on Visitor Experience for Spring and Summer 2017

Some much-needed infrastructure work in Waterton Lakes National Park is taking place this spring and summer, which will result in improved visitor experiences. This information is subject to change as project details are finalized, and the following is current as of April 25, 2017. Please check our website for updated project details at www.parksCanada.ca/waterton and click "Parks Canada infrastructure program" under "Plan Your Visit".

Projects resulting in a closure or having a major impact to visitors include:

Cameron Lake Day Use Area: Closed until further notice (expected opening Summer 2017)

Starting April 17, there will be no public access to Cameron Lake or the Carthew Alderson trailhead until construction is complete. Vehicles can access the Akamina Parkway up to the Little Prairie Day-Use Area. From there, visitors can travel on foot to the Akamina trailhead only via the Cameron Lake ski trail. We expect to have the Akamina Parkway open to Cameron Lake by the end of June and confirmed dates will be communicated once available.

Blakiston Falls viewing platform: Closed until further notice

As of April 2017, the viewing platforms at Blakiston Falls remain closed for replacement until further notice. The Blakiston Valley Trail is open. Timing for this work is dependent on a number of factors, including weather. Confirmed dates will be communicated once available.

Projects resulting in a minor impact to visitors include:

Boundary fence

Hikers and horse users should exercise caution when using the Horseshoe Basin Trail and Bison Paddock parking lot as debris from boundary clearing may be scattered on paths.

Staff Housing

Construction on the 100-block of Clematis Avenue and Windflower Avenue is continuing, to replace Parks Canada staff accommodation.

Waterton Townsite Infrastructure Replacement

Cameron Falls Drive, Clematis Avenue South, Vimy Avenue and Harebell Road: The third phase of upgrades to replace the main water and sewer lines, resurface roads and complete sidewalk improvements will take place from October 2016 until November 2017. Temporary road closures will be necessary to complete portions of the work.

Waterton Avenue: Due to parking upgrades, the community kitchen, picnic shelter and parking lots along the south end of Waterton Avenue is closed until further notice.

Updates will be issued as information is confirmed. Please consult the Waterton Lakes National Park website at www.parksCanada.ca/waterton for the latest updated information and a map of projects that may impact your visit.

FIGHTING FOR FIVE NEEDLE PINES



The life cycle of the whitebark pine starts with a small seed, stashed by a nutcracker, which can grow into a 20-metre-tall, 500-year-old tree.

Whitebark pine, a long-lived five-needle species, is challenged throughout its Canadian range by a number of threats: the introduced pathogen white pine blister rust, mountain pine beetle, fire suppression and climate change. It is listed as "endangered" under the Species at Risk Act (SARA) as the Canadian population is in decline. Some stands in Waterton Lakes National Park have an 80 to 90 per cent infection rate of invasive white pine blister rust. Whitebark pine is found in all the mountain national parks - Waterton Lakes, Banff, Kootenay, Yoho, Mount Revelstoke, Glacier, and Jasper - and Parks Canada teams are actively applying restoration techniques to improve the natural renewal of this species at risk.



Parks Canada protects seed-producing whitebark pine trees that show resistance to the introduced blister rust called 'plus trees'. Natural regeneration is enhanced by planting stock grown from these 'plus tree' seeds. Some seedlings are also inoculated with spores of a native fungus called 'Siberian slippery jack' which has a symbiotic relationship with pines and helps the young trees acquire nutrients. When applied to the roots of seedlings prior to planting, the survival and health of those seedlings is greatly improved.



Prescribed fire is also used to restore and improve whitebark pine habitat in sub-alpine regions. These fires replicate natural conditions under which whitebark pine previously evolved and

thrived. The process removes competing vegetation and creates nutrient-rich habitat suitable for planting putatively blister rust-resistant whitebark pine seedlings.

Parks Canada planted 1,000 rust-resistant seedlings on Sofa Mountain in Waterton Lakes National Park in the fall of 2016. Staff planted the seedlings in an area burned by prescribed fire earlier in the season. As a world leader in conservation, Parks Canada is committed to the long-term restoration and protection of whitebark pine. We will continue to research and monitor whitebark pine and use the results to help direct our future actions.

Parks Canada's whitebark pine recovery effort in Waterton Lakes National Park is part of restoration initiatives taking place throughout other national parks and with cooperation from provincial, academic and international partners. Glacier National Park in Montana has been helping us by growing our whitebark pine seedlings for the past seven years – up to 6,000 seedlings so far! We also work with Alberta Agriculture and Forestry, the United States Forest Service and the British Columbia Forest Service.

WHERE THE WILD THINGS GO: WILDLIFE MOVEMENT PROJECT



Waterton Lakes National Park has started a five-year research program to gather information on wildlife movement around the perimeter of the Waterton Park community and between the Waterton and Akamina valleys. The goal of the project is to provide information to help Parks Canada make decisions regarding

Remote camera - bear family ~ © Parks Canada



wildlife (mainly carnivores and ungulates) movement through this area. In order to maintain their populations, it's important for wildlife to find food, flee from predators and interact with each other. Researchers are using a variety of information sources, including remote cameras.

Because the cameras are near the community and trails, there may be some sensitivity regarding privacy. The cameras are primarily used for wildlife conservation purposes, but images that show illegal activities that may have serious impacts on wildlife, or put the safety of visitors at risk may be used for law enforcement purposes. Cameras are not located within the core of the community. Public notices will be posted at trail heads and other areas where cameras are deployed. All images of people will be classified by number and type of use, then immediately deleted.

We often share images of wildlife from remote camera projects on our website and social media. Check out our "Remote Camera Images" page on our website. They're also the most liked and shared on our social media. We're looking forward to getting some great new photos.

PROTECTING THE PARK FROM AQUATIC INVASIVE SPECIES

Parks Canada is protecting Waterton Lakes National Park's aquatic environment from aquatic invasive species. Starting in 2017, motorized and trailer launched boats are not permitted in Waterton Lakes National Park. Owners of human-powered watercraft must complete a mandatory self-inspection of their boat before entering park waters. The self-inspection form will act as a permit, and watercraft users must ensure their permits are available for examination. Visitors complete the permit the first time they launch their human-powered watercraft in the park, but must comply with the permit conditions every time they launch thereafter.

Parks Canada is using the self-inspection permit as a method to collect data and inform visitors on how to reduce the risk of spreading invasive mussels.

Roving staff will answer questions and ensure visitors understand the inspection process. Since the permit is a legal requirement, Park Wardens will be checking that visitors completed the self-inspection and will take appropriate action as necessary.

This permit is a key step to prevent introduction of invasive mussels into the Waterton Lakes. More information is available at:

<http://www.pc.gc.ca/en/pn-np/ab/waterton/visit/comportements-guidelines>



FESTIVAL SPECIAL EVENTS AND PROGRAMS

Early Bird Chorus

June is a lovely time to see the wildflowers of Waterton. It is also a good time to listen to and watch the bird life of the Park. We invite you to set your alarm for 6:30 am so you can get up and enjoy the glorious sound of the Early Bird Chorus. If you aren't a morning person, this is your chance to find out what you've been missing. Trust us, you won't be disappointed.



Cyndi Smith with Festival bird watchers. ~ © Jarom Scott

Waterton Lakes Opera House

This year, we have a great partner venue at the Waterton Lakes Opera House. Come and enjoy some theatre style presentations by Roy Golsteyn and Carol Patterson. You won't want to miss out on watching Charlie Russell's *Bear Man of Kamchatka*, after the show you can ask Charlie all your desired questions. PS. Don't forget to buy popcorn from the concession!

Weekend Lunch

Relish a delicious dish and gather and meet with old and new friends. The festival is offering some great food on Saturday June 17th the Taco bar will be taking over the kitchen and ready to sell food. The Taco Bar brings traditional Mexican food to Waterton Lakes National Park. Their slow-cooked meats, sauces and salsas are all made from scratch, right in front of you in a kitchen not unlike the one in your home- albeit more colorful than your average kitchen but it's real home cooking, no tex-mex here.

On Sunday June 18th you don't want to miss out on Lethbridge's Umami Shop. Umami Shop is a world grocerant offering international food and cooking classes along with our fresh open kitchen and made to order deli option. "Our mission is to increase your quality of life through the exploration of food! Yum for everyone!"

Artisan Fair

This fair is part of the Wildflower Festival. Come and treat yourself to nature inspired products and artwork or find a unique gift for your loved ones at the Waterton Artisan Fair. Enjoy browsing through locally produced jewelry, artwork, pottery, natural body care products, honey, wooden crafts, bird and bee houses and native Alberta plants for your garden. Meet the artisans and craftsmen. Nature and conservation groups will inform about their work.

2017 Exhibitors include:

- Wild about Flowers (Native Alberta Wildflowers - Sat-Sun)
- Pincher Creek Pottery (Handmade domestic earthenware pottery - Fri-Sun)
- Thingmaker (Jewelery from upcycled metal and garden art - Fri-Sat)
- Splish Splash Soaps n'Stuff (Natural soaps, bath and body care products, candles, wooden craft - Fri-Sun)
- Rob Harding (Feather artwork and earrings - Fri-Sat)
- Under the Arch Studio (Felted art work, soaps, prairie flower honey, Waterton Wildflower Art - Sat-Sun)
- Bird and Bee Houses (Sat-Sun)
- Knot & Burl Woodworks (Wood rings, wood turned pens, wood bowls - Sat-Sun)
- Jami (Hand-made wallets, change purses, repurposed materials - Sun)
- Wildrose Heritage Seed Company (Heirloom Vegetable Seeds - Fri-Sat)
- Nature Conservancy of Canada (NCC - Fri-Sun)
- Castle-Crown Wilderness Coalition (Fri-Sun + Mon-Tue)
- Wesley Harry, Native Art (Fri - Sun)

There will be spare tables in the center of the Community Centre for everyone to use. Bring your lunch or just gather and have a chat with other participants and have coffee or tea. We want you to have a place to gather, gab and grab a thing or two from our local vendors.

Ethnobotany

Ethnobotany is the study of the traditional knowledge and uses of plants for food, shelter, medicine, poison and ceremony. Take part and learn about the Ethnobotany of the Blackfoot people and gain insight on the importance of the native plants of this area on Saturday June 17th Blackfoot Ethnobotany Walk at Coppermine Creek. Also take part in a session with Brenda Holder, a professional interpretive guide, who has learned from research and from listening to her Métis elders about the traditional uses of plants. Sign up for one of Brenda's Nature's Medicine Cabinet - From Plants to slaves on Friday June 16th or Monday June 19th, or her traditional beading workshop that celebrate the flowers through traditional handiwork on Tuesday June 20th.

All Day Art Workshops

This year we have not one world-renowned teacher, but we have two!!! Join Margaret Best for our all day session. This year Margaret is leading a three-day intermediate level workshop for more experienced artists. Brent Laycock will also be leading a "Get Wild" two-day acrylic session.

An Appreciation for Nature

Come and listen to a performance of a radio-style drama based on the life of work of South Alberta's conservationist-artist-writer Annora Brown. 260 of her paintings, held in the Glenbow archives, have recently been photographed, digitized and prints made available to the public. 200 of these are wildflowers from Southern Alberta. 30 are of the Blackfoot people and their culture. The play was written and is narrated by Joyce Sasse. Presenters are Doris Blackburn, Susan Vogelaar and Gerry Alex (all from Pincher Creek, AB). Join in for this sponsored event by the Nature Conservancy of Canada at the Falls theatre at 7:30 pm on Sunday June 18th. It is open to all. See www.annorabrown.ca



Photograph of Artist Annora Brown ~
Image collection of Patricia Alderson



Make the most of free entry with your 2017 Discovery Pass and take in all that Waterton has to offer!

Find more information on guided hikes, interpretive theatre programs and a wide variety of family-friendly programming in the Waterton Glacier Guide, or online at www.pc.gc.ca/waterton and join the celebration.



CASUAL FAMILY DINING



BREAKFAST · LUNCH · DINNER

TAKEOUT · WIFI

zums.ca  



2017 WATERERTON WILDFLOWER FESTIVAL AT A GLANCE

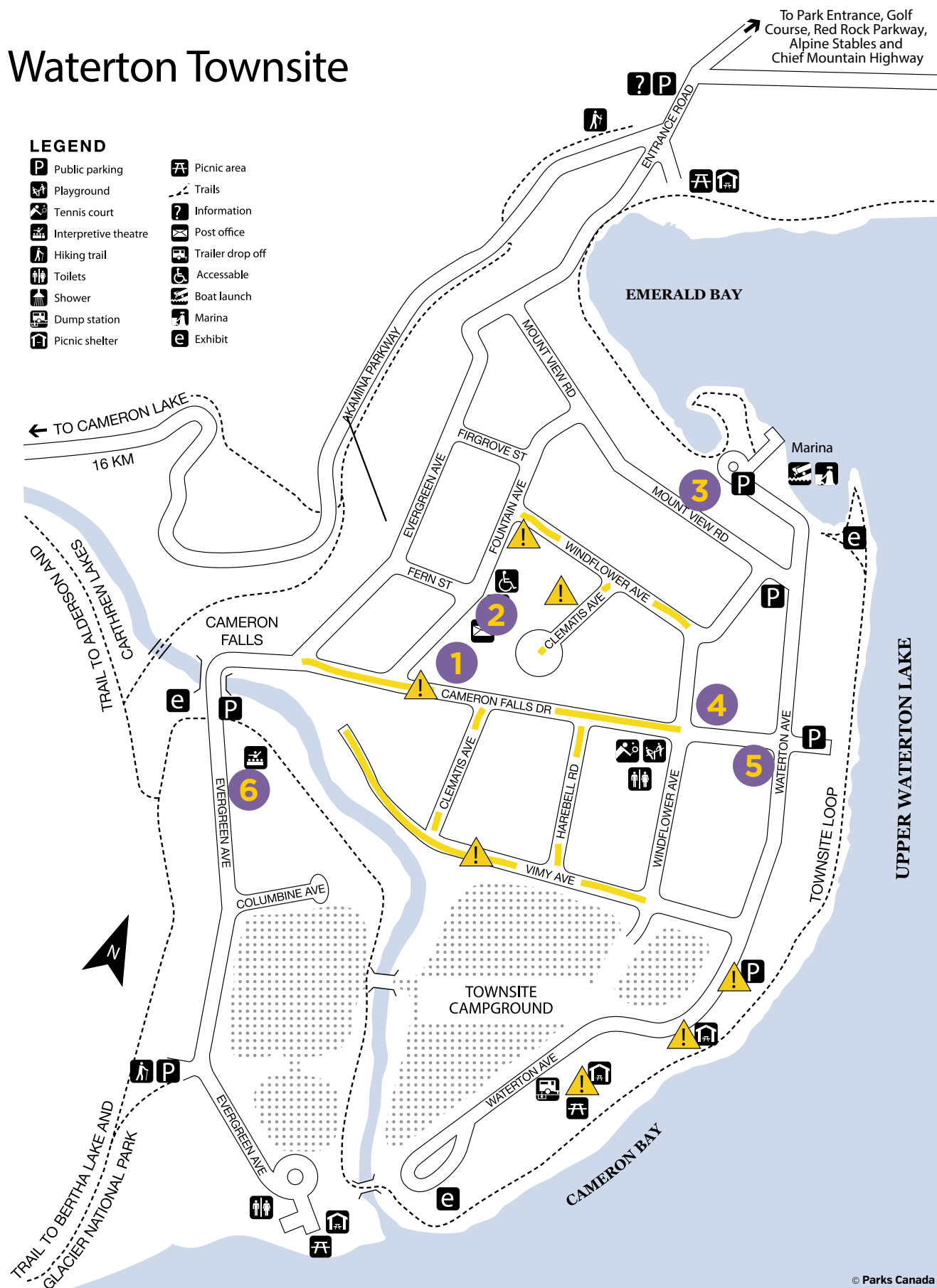


Date	2017-06-15	2017-06-16	2017-06-17	2017-06-18	2017-06-19	2017-06-20
Time	Thursday	Friday	Saturday	Sunday	Monday	Tuesday
6:30 am to 9:00 am	15A Early Bird Chorus - Birds of the Montane	16A Early Bird Chorus - Birds of the Waterways	17A Wildflowers at Sunrise 4:45 am to 7:45 am			
7:00 am to 10:00 am	15B Photographing Wildflowers along the Bellevue Trail	16B Controlling Light for Wildflower Photography		18B The Art of Photographing Wildflowers	19B Capturing Wildflowers and Stunning Vistas - Photo Workshop	20B Photographing Wildflowers along the Bellevue Trail
7:30 am to 10:30 am	15C ABC's of Wildflower Identification	16C Wild Edibles	17C The Wild Lilies of Waterton	18C Wildflowers 101	19C Where the Prairie Meets the Mountains	20C The Geology of Waterton - What Makes Waterton Unique
8:00 am to 11:00 am	15D Extraordinary Flowers in Easy Places	16D Invigorate Your senses	17D Capturing Wildflowers and Stunning Vistas - Photo Workshop	18D Living Dangerously	19D Extraordinary Flowers in Easy Places	20D 100 Species Walk
8:00 am to 3:00 pm			17E Along the Oil Basin Trail with Valorie		19E In Search of Wildflowers – A Hike Up Sofa Mountain	20E Métis Beadwork and Design Workshop
8:15 am to 5:15 pm		16F Nature's Medicine Cabinet - From Plants to Salves			19F Nature's Medicine Cabinet - From Plants to Salves	
8:30 am to 11:30 am	15G Bears and Blossoms - a Walk with Charlie	16G Wildflowers along the Prince of Wales Trail	17G Bears and Blossoms - a Walk with Charlie	18G Extraordinary Flowers in Easy Places	19G Bears and Blossoms - a Walk with Charlie	20G Wildflowers along the Prince of Wales Trail
9:00 am to 11:30 am	15I Wildflowers from Horseback	16I First Nations Story Telling	17I Wildflowers from Horseback	18I Wildflowers from Horseback		20I Learn to Drum
9:00 am to 4:00 pm			16H Botanical Art Three Day Advanced Workshop		19H "Getting Wild With Acrylics" Two Day Workshop	
9:15 am to 12:15 am			17K Blackfoot Ethnobotany Walk at Coppermine Creek	18K Wildflowers of the Redrock Parkway	19K The Geology of Waterton - What Makes Waterton Unique	20K Wildflowers 101
9:30 am to 12:30 am	15L First Nations Traditional Dancing		17M Movie - The Artist's Garden (90min)	18L Bee or Butterfly House Building for Kids	19L Invigorate Your Senses	20M Movie - The Artist's Garden (90min)
12:00 pm to 1:30pm		16M First Nations Cooking Class for Adults		18M Where the Prairie Meets the Mountains		
12:45 pm to 3:45pm				18N Solar Stargazing	19P A Walk with the Authors	
1:00 pm to 4:00 pm	15P Wild Edibles	16P A Walk with the Authors	17P Bee or Butterfly House Building for Kids	18P Wild Edibles		
1:00 pm to 5:00 pm					19Q Vistas and Landscape Stories of the Bertha Trail	
1:15 pm to 4:15 pm	15Q Living Dangerously		17R The Many Wildflowers of the Rose Family	18Q Connecting with the Natural World	19R 100 Species Walk	
1:30 pm to 4:30 pm	15R Beaver Bundle at the Maskinonge	16R 100 Species Walk		18R Hawk's Nest		
2:00 pm to 3:30 pm				18S The Beautiful Chemicals in Beautiful Flowers (90min)		
2:00 pm to 5:00 pm			17T First Nations Cooking Class for Kids	18T Learn to Drum	19T The Sights from Bear's Hump	20T Hawks Nest - A Memorial Walk for John Russell
3:00 pm to 5:00 pm						
4:00pm to 6:00pm	15U Movie - The Artist's Garden (90min)	16U Bear Man of Kamchatka with Charlie Russell	17U The Beautiful Chemicals in Beautiful Flowers (90min)	18U Charles Waterton - The man who inspired Charles Darwin! (60min)	19U Bear Man of Kamchatka with Charlie Russell	Please come to Opera House.
7:30 pm to 9:30 pm	15V First Nations Story Telling	16V Flowers of Waterton & the Butterflies Who Love Them	17V Night Sky Presentation	18V Annora Brown: Interpreter of the Foothills	19V Waterton Wild Presentation	Please come to Falls Theatre
10:00 PM	15X Night Sky Photography	16X Night Sky Photography				

Waterton Townsite

LEGEND

- | | |
|----------------------|------------------|
| Public parking | Picnic area |
| Playground | Trails |
| Tennis court | Information |
| Interpretive theatre | Post office |
| Hiking trail | Trailer drop off |
| Toilets | Accessible |
| Shower | Boat launch |
| Dump station | Marina |
| Picnic shelter | Exhibit |



- 1 Festival Headquarters (Community Centre)
- 2 Lions Hall
- 3 Administrative Building

- 4 Waterton Lake Opera House
- 5 RCMP
- 6 Falls Theatre

REGISTRATION

Before the Festival: April 1 - June 14, 2017
On-line at: www.watertonwildflowers.com

During the Festival: June 15 - 20th, 2017
On-line at: www.watertonwildflowers.com
or IN PERSON: At the Waterton Community Centre - 201 Cameron Falls Drive

REMEMBER: Sessions fill up so it is best to register early.

CANCELLATION POLICY: 48 hours notice. All programs will run rain or shine.

INFORMATION

WHERE TO MEET: Unless otherwise stated, meet your event leader at the Waterton Community Centre - 201 Cameron Falls Dr, 20 min prior to event start time. (Washrooms available)

CAR POOL EVENTS: The Wildflower Festival is a car pool event. You may ride with someone else or drive your own vehicle.

WHAT TO BRING: A daypack with a water bottle, snack, sunscreen, a hat, bug spray, and a camera.

WHAT TO WEAR: Sturdy walking shoes, a wind-breaker and a hat are necessities. The terrain is uneven. Mountain weather is variable and can change quickly; be prepared for all conditions - sun, wind, rain...even snow!

PHOTOGRAPHY COURSES: digital and/or film cameras, tripod recommended, some walking involved.

WHERE TO STAY AND DINE:

www.myWaterton.ca

CHECK OUR WEBSITE FOR NEW CLASSES AND UPDATES: www.WatertonWildflowers.com

PLEASE, no pets or unregistered individuals.

For additional information call: 1-877-780-1998

EMERGENCY PH # IN PARK
911 [Mention You're in Waterton]

Activity Level Descriptions

All: Activity may occur indoors; minimal walking is involved; some venues are wheelchair accessible.

Easy: Participants must be able walk the equivalent of 5 city blocks on uneven ground, stand for up to an hour, and get in and out of a motor vehicle easily.

Moderate: Participants must be sure footed, able to ascend a path the equivalent of a few flights of stairs and walk on uneven surfaces up to 3 km (2 miles) at a 3 kmph pace (2 mph).

Challenging: Participants must be in good health, be mobile, and able to participate in 3 – 5 hours of physical activity per day, the equivalent of walking up to 8 km (5 miles) at a 4 kph (2.5 mph) pace over uneven ground.

Thursday, June 15

15A Early Bird Chorus - Birds of the Montane

Time: 6:30 am to 9:00 am

Presenter: Kim Pearson

Activity Level: ■ Moderate

Category: Fauna, Birding

Description: Rise and shine and enjoy the most beautiful and melodic time of the day. Join Kim at this bright hour to decipher the chorus of bird songs. Bring binoculars, warm clothing and caffeine.

Cost: \$45.00

15B Photographing Wildflowers along the Bellevue Trail

Time: 7:00 am to 10:00 am

Presenter: Ian Wilson

Activity Level: ■ Moderate

Category: Photography

Description: Join Ian Wilson, author and photographer of *Wildflowers of Waterton Park*, for this hands-on workshop. Learn to capture the fine details of wildflowers along the Bellevue Trail. Camera settings, use of depth of field to highlight your subject, the benefits of a tripod, use of lighting and composition and other close-up techniques will be discussed while photographing wildflowers. Discover how best to use the settings on your camera for the perfect image, and benefit from Ian's years of photographic experience. Bring a tripod.

Cost: \$45.00

15C ABC's of Wildflower Identification

Time: 7:30 am to 10:30 am

Presenter: Jacinthe Lavoie

Activity Level: ■ Moderate

Category: Flora

Description: One flower, two flowers, red flowers, blue flowers. Do you want to know more? If so, join Jacinthe Lavoie, author of *Wildflowers of Waterton Park* to

learn the art of wildflower identification during this hands-on flower walk. Build on your knowledge and review the basics of flower identification using blossom, stem, and leaf features. You will also learn the characteristics of different plant families, from Asters to Lilies, and discover which plants grow in different habitats. Bring a notebook, pencil & camera.

Cost: \$45.00

15D Extraordinary Flowers in Easy Places

Time: 8:00 am to 11:00 am

Presenter: Valorie Webber

Activity Level: ■ Easy

Category: Flora

Description: Get to know Waterton's beautiful wildflowers by venturing only a few steps from your car. View many wonderful species in various areas and see what lies just off the roadside.

Cost: \$45.00

15G Bears and Blossoms - a Walk with Charlie

Time: 8:30 am to 11:30 am

Presenter: Charlie Russell

Activity Level: ■ Moderate

Category: Fauna, Flora

Description: Discover the role bears play in the health of wildflower populations and hear stories and experiences of world renowned bear expert Charlie Russell as he shares his knowledge and viewpoint on bears and humans.

Cost: \$59.00

15J Wildflowers from Horseback

Time: 9:00 am to 11:30 am

Presenter: Jo-Anne Reynolds

Activity Level: ■ Moderate

Category: Flora

Description: What could be more fun than riding a horse and flower watching at the same time? This program will start

with some flower basics on the ground followed by a leisurely ride that will take you into different habitats to view dozens of different flower types. No riding experience is necessary. Please register at Alpine Stables.

Cost: \$90.00

15L First Nations Traditional Dancing

Time: 9:30 am to 12:30 am

Presenter: Piikani First Nations

Activity Level: ■ All

Category: First Nations

Description: Members of the Piikani First Nation will take you into their world of color and sound with demonstrations of their traditional dancing.

Cost: Free

15P Wild Edibles

Time: 1:00 pm to 4:00 pm

Presenter: Valorie Webber

Activity Level: ■ Moderate

Category: Flora

Description: Come seek out the things you COULD eat if you had to under Valorie's knowledgeable guidance and those you should NOT!

Cost: \$45.00

15Q Living Dangerously

Time: 1:15 pm to 4:15 pm

Presenter: Lyndon Penner

Activity Level: ■ Moderate

Category: Flora

Description: When asked about the most dangerous things in the park, many people (incorrectly) assume that it must be bears or cougars. The truth is that there are far more dangerous plants in the park than there are animals. Join Lyndon for a fascinating session in which he will point out some of the most poisonous and deadly plants in the park; some of which are among the most poisonous in Canada! You'll be amazed at all the leafy green things growing in the woods that could easily kill you...

Cost: \$45.00

15R Beaver Bundle at the Maskinonge

Time: 1:30 pm to 4:30 pm

Presenter: Ryan Heavy Head

Activity Level: ■ Moderate

Category: First Nations, Fauna

Description: Ksisskstaki is the Blackfoot word for beaver. Be sure to check out this talk with Ryan on the importance of the beaver to Waterton culturally and as an ecosystem manager.

Cost: \$45.00

15U Movie - The Artist's Garden (90min)

Time: 4:00 pm to 6:00 pm

Presenter: Buy Tickets at Opera House

Activity Level: ■ All

Category: Documentary

Description: Following the smash hit *Painting the Modern Garden: Monet to Matisse* from Season 3 comes a new film based on the hugely popular exhibition "The Artist's Garden: American Impressionism and the Garden Movement, 1887-1920" from the Florence Griswold Museum in Connecticut, widely considered a home of American Impressionism. Taking its lead from French artists like Renoir and Cézanne, the American impressionist movement followed its own path which over a thirty-year period reveals as much about America as a nation as it does about its art as a creative power-house. It's a story closely tied to a love of gardens and a desire to preserve nature in a rapidly urbanizing nation. Travelling to studios, gardens and famous locations throughout the United States, UK and France, this mesmerizing film is a feast for the eyes.

Cost: \$10.00 Adult \$7.00 Children

15V First Nations Story Telling

Time: 7:30 pm to 9:30 pm

Presenter: Piikani First Nations

Activity Level: ■ All

Category: First Nations

Description: Listen to traditional stories told by members of the Piikani First Nations in a traditional tepee. Learn how important Waterton and the surrounding area is for the First Nations people. Please register as capacity is limited.

Cost: Free

15X Night Sky Photography

Time: 10:00 PM

Presenter: Alan Dyer

Activity Level: ■ Easy

Category: Photography

Description: Learn to shoot Waterton by night; capture unique images of moonlit landscape with stars in the sky above. Alberta astrophotographer Alan Dyer leads you on a photo trek to shoot in the twilight, under the moon and stars. Warning - this session may go to midnight; dress warmly. Participants should bring a DSLR or high quality mirrorless camera with a fast f/2.8 wide angle lens, a sturdy tripod and remote cable release for triggering the shutter. Also, bring a red flashlight for use at night.

Cost: \$45.00

Friday, June 16

16A Early Bird Chorus - Birds of the Waterway

Time: 6:30 am to 9:00 am

Presenter: Kim Pearson

Activity Level: ■ Moderate

Category: Fauna, Birding

Description: Rise and shine and enjoy the most beautiful and melodic time of the day. Join Kim at this bright hour to decipher the chorus of bird songs. Bring binoculars, warm clothing and caffeine.

Cost: \$45.00

16B Controlling Light for Wildflower Photography

Time: 7:00 am to 10:00 am

Presenter: Ian Wilson

Activity Level: ■ Moderate

Category: Photography

Description: Join Ian Wilson, author and photographer of *Wildflowers of Waterton Park* during this hands-on workshop. Learn to control light for wildflower photography! Participants will have an opportunity to use reflectors, diffusers, LED lights, on-camera flash, and off-camera flash while photographing flowers. We will also review the benefits of a tripod, the use of depth of field to highlight your subject, composition and other close-up techniques. Bring a tripod.

Cost: \$45.00

16C Wild Edibles

Time: 7:30 am to 10:30 am

Presenter: Valorie Webber

Activity Level: ■ Moderate

Category: Flora

Description: Come seek out the things you COULD eat if you had to under Valorie's knowledgeable guidance and those you should NOT!

Cost: \$45.00

16D Invigorate Your Senses

Time: 8:00 am to 11:00 am

Presenter: Lyndon Penner

Activity Level: ■ Moderate

Category: Spiritual

Description: It is often remarked that Waterton is a visual feast, but have you ever thought about indulging your other senses here? Join Lyndon for a session that will cater to all the wondrous and varied sensations that the park has to offer. You'll certainly see a lot of flowers, but you will also be invited to listen closely to the wind in the trees, smell the blossoms, and touch and taste them. For those who are interested in a more tactile and intimate connection with the earth, this will be a terrific experience.

Cost: \$45.00

16F Nature's Medicine Cabinet - From Plants to Salves

Time: 8:15 am to 5:15 pm

Presenter: Brenda Holder

Activity Level: ■ Moderate

Category: First Nations, Flora, Spiritual

Description: This workshop will take place both in the field and in the classroom and will focus on the Traditional Use of Plant Medicines and how they fit in our world today. You will learn plant identification and plant use, including edibles (teas, syrups) and medicines (salves, poultices, liniments); you will also learn the methods of creating these products and have the opportunity of making some to take home. We will discuss the ethics of harvesting and plant respect. All plant material will be gathered before the festival and provided for the participants. Lunch is not provided.

Cost: \$99.00

16G Wildflowers Along the Prince of Wales Trail

Time: 8:30 am to 11:30 am

Presenter: Jo-Anne Reynolds

Activity Level: ■ Moderate

Category: Flora

Description: Discover the amazing variety of wildflowers that inhabit the different habitats surrounding this landmark; hear of the history and delight in the views.

Cost: \$45.00

16H Botanical Art - Three Day Advanced Workshop

Time: 9:00 am to 4:00 pm

Presenter: Margaret Best

Activity Level: ■ All

Category: Art

Description: Join renowned artist Margaret Best for a three day in-depth workshop on drawing and painting using graphite and watercolours or coloured pencils.

Cost: \$299.00

16J First Nations Story Telling

Time: 9:00 am to 11:30 am

Presenter: Piikani First Nations

Activity Level: ■ All

Category: First Nations

Description: Listen to traditional stories told by members of the Piikani First Nations in a traditional tepee. Learn how important Waterton and the surrounding area is for the First Nations people. Please register as capacity is limited.

Cost: Free

16M First Nations Cooking Class for Adults

Time: 12:45 pm to 3:45 pm

Presenter: Piikani First Nations

Activity Level: ■ All

Category: First Nations

Description: Do you ever wonder what the First Nations ate? Learn from the Piikani First Nation to make Bannok and hear stories of traditional foods that are part of the First Nations diet. Learn the recipe and make the this wonderful treat at home.

Cost: \$45.00

16P A Walk with the Authors

Time: 1:00 pm to 4:00 pm

Presenter: Ian Wilson & Jacinthe Lavoie

Activity Level: ■ Moderate

Category: Flora

Description: Take a walk with authors and photographer of *Wildflowers of Waterton Park* and catch their contagious passion for the beauty of Waterton Park and their feelings about wild places in general. Participants will have an opportunity to glean more knowledge about flowers from Jacinthe and pick up tips about photographing the flowering gems they see along the way.

Cost: \$55.00

16R 100 Species Walk

Time: 1:30 pm to 4:30 pm

Presenter: Valorie Webber

Activity Level: ■ Moderate

Category: Flora

Description: Waterton is wonderfully rich with a diversity of wildflower species. On this walk, come search for and identify 100 species from A-Z with Valorie.

Cost: \$45.00

16U Bear Man of Kamchatka

Time: 4:00 pm to 6:00 pm

Presenter: Charlie Russell

Location: Opera House

Activity Level: ■ All

Category: Documentary

Description: Join Charlie Russell in watching 'The Bear Man of Kamchatka'. A 2006 BBC documentary about Charlie's incredible work with grizzly bears. See how he introduced wild grizzly bear cubs back into the wilderness. After this film you will look at bears differently. Following the movie you can ask Charlie Russell all of your desired questions.

Cost: \$20.00; Up to 18: \$10

16V Flowers of Waterton & the Butterflies Who Love Them

Time: 7:30 pm to 9:30 pm

Presenter: Lyndon Penner

Activity Level: ■ All

Category: Presentation

Description: This is a story of love and survival in the Alberta Rockies, full of colourful characters, unlikely alliances, and heart-stopping drama in the high alpine meadows! Obviously we are talking about the wildflowers and the butterflies who care for them! Although often dismissed as being merely pretty things to look at, butterflies are much more than they seem. They provide a crucial link in the food chain with their caterpillars feeding many birds and other insects, and they themselves fulfilling an incredibly crucial role as pollinators. Many mountain plants are dependent upon them for survival, and they engage in interesting, complex, and sometimes puzzling behavior. Join Lyndon for an introduction to these small but critical citizens of the park and be amazed!

Cost: By Donation

16X Night Sky Photography

Time: 10:00 PM

Presenter: Alan Dyer

Activity Level: ■ Easy

Category: Photography

Description: Learn to shoot Waterton by night; capture unique images of moonlit landscapes with stars in the sky above. Alberta astrophotographer Alan Dyer leads you on a photo trek to shoot in the twilight, under the moon and stars. Warning - this session may go to midnight; dress warmly. Participants should bring a DSLR or high quality mirrorless camera with a fast f/2.8 wide angle lens, a sturdy tripod and remote cable release for triggering the shutter. Also, bring a red flashlight for use at night.

Cost: \$45.00

FESTIVAL SCHEDULE *Saturday, June 17*

Saturday, June 17

17A Wildflowers at Sunrise

Time: 4:45 am to 7:45 am

Presenter: Lyndon Penner

Activity Level: ■ Moderate

Category: Flora

Description: Have you ever experienced sunrise in Waterton? A sunrise hike with Lyndon might be just what you've been waiting for: Waterton's abundance of wildflowers are quite different at dawn than they are during the day. Many blossoms close for the night and open with the first rays of the sun. The dew is still on the grasses, the first songbirds are beginning to sing, it is a particularly peaceful and wonderful time of the day.
Cost: \$45.00

17C The Wild Lilies of Waterton

Time: 7:30 am to 10:30 am

Presenter: Jacinthe Lavoie

Activity Level: ■ Moderate

Category: Flora

Description: From small to large and plain to showy, Waterton has a wonderful variety of lilies. Learn about the family Lilaceae, its identifying features, its change in family membership and other interesting facts. Inspect the many plants that are now, or have previously been, considered lilies. This includes the spectacular western red lily, false hellebore, the Queen's cup, smooth camas, and many more... Moderate walking.
Cost: \$45.00

17D Capturing Wildflowers and Stunning Vistas - Photo Workshop

Time: 8:00 am to 11:00 am

Presenter: Ian Wilson

Activity Level: ■ Moderate

Category: Photography

Description: Learn to improve your landscape photography and discover use of natural light, composition, leading lines and other techniques to create stunning photographs. Creative use of depth of field, filters and slow shutter speeds will also be discussed while taking landscape photographs. Bring a tripod if you have one. A tripod is useful.

Cost: \$45.00

17E Along the Oil Basin Trail with Valorie

Time: 8:00 am to 3:00 pm

Presenter: Valorie Webber

Activity Level: ■ Challenging

Category: Flora

Description: Come along up, way up the Oil Basin Trail, it is steep in places but the view is fantastic! See prairie, woodland and mountain meadow species. Bring lunch & extra water.

Cost: \$85.00

17G Bears and Blossoms - a Walk with Charlie

Time: 8:30 am to 11:30 am

Presenter: Charlie Russell

Activity Level: ■ Moderate

Category: Fauna

Description: Discover the role bears play in the health of wildflower populations and hear stories and experiences of world renowned bear expert Charlie Russell as he shares his knowledge and viewpoint on bears and humans.

Cost: \$59.00

17J Wildflowers from Horseback

Time: 9:00 am to 11:30 am

Presenter: Jo-Anne Reynolds

Activity Level: ■ Moderate

Category: Flora

Description: What could be more fun than riding a horse and flower watching at the same time? This program will start with some flower basics on the ground followed by a leisurely ride that will take you into different habitats to view dozens of different flower types. No riding experience is necessary. Please register at Alpine Stables.

Cost: \$90.00

17K Blackfoot Ethnobotany Walk at Coppermine Creek

Time: 9:15 am to 12:15 am

Presenter: Ryan Heavy Head

Activity Level: ■ Moderate

Category: First Nations, Flora, Spiritual

Description: Ethnobotany is the study of a region's plants and their practical uses through the traditional knowledge of a local culture and people.' On this walk, join Ryan and gain insight into what local First Nations knew about the native plants of this area and how they made use of them.

Cost: \$45.00

17M Movie - The Artist's Garden (90min)

Time: 12:00 am to 1:30 pm

Presenter: Buy Tickets at Opera House

Activity Level: ■ All

Category: Documentary

Description: Following the smash hit *Painting the Modern Garden: Monet to Matisse* from Season 3 comes a new film based on the hugely popular exhibition "The Artist's Garden: American Impressionism and the Garden Movement, 1887-1920" from the Florence Griswold Museum in Connecticut, widely considered a home of American Impressionism. Taking its lead from French artists like Renoir and Cézanne, the American impressionist movement followed its own path which over a thirty-year period reveals as much about America as a nation as it does about its art as a creative power-house. It's a story closely tied to a love of gardens and a desire to preserve nature in a rapidly urbanizing nation. Travelling to studios, gardens and famous locations throughout the United States, UK and France, this mesmerizing film is a feast for the eyes.

Cost: \$10.00 Adult \$7.00 Children

17P Bee or Butterfly House Building for Kids

Time: 1:00 pm to 4:00 pm

Presenter: Roger Riis

Activity Level: Age range 8-14

Category: Kids

Description: Kids, join Roger and build a butterfly or bee house - you get to choose which. While building your house you will learn how to help these natural pollinators do their job. Remember - bee, butterfly and birds houses are not allowed to be used in the park. Adult supervision not necessary. Please register as capacity is limited.

Cost: Free

17R The Many Wildflowers of the Rose Family

Time: 1:30 pm to 4:30 pm

Presenter: Jo-Anne Reynolds

Activity Level: ■ Moderate

Category: Flora

Description: A large and important family, you will enjoy identifying the various species that contribute to Waterton's wide diversity of plants. As we look for the different blooms, we'll talk about the identifying characteristics, the historic uses, the great importance as food crops and other interesting facts.

Cost: \$45.00

17T First Nations Cooking Class for Kids

Time: 3:00 pm to 5:00 pm

Presenter: Piikani First Nations

Activity Level: Age range 7-14

Category: First Nations

Description: For kids 7 -14; let the kids get their hands dirty and help make traditional Bannok, as they hear stories of traditional First Nations foods. They will also get a sweet treat!

Cost: \$25.00

17U The Beautiful Chemicals in Beautiful Flowers (90min)

Time: 4:00 pm to 6:00 pm

Presenter: Roy Golsteyn

Activity Level: ■ All

Category: Presentation

Description: Join Roy Golsteyn, a cancer research scientist, who is investigating chemicals from native plants. Roy will share some of his experiences and experiments about chemicals that are present in native plants, including those that flourish in Waterton Lakes National Park. He will give you a healthy look at some the nasty chemicals found in beautiful wild flowers.

Cost: \$20.00; Up to 18: \$10

17V Night Sky Presentation

Time: 7:30 pm to 9:30 pm

Presenter: Alan Dyer

Activity Level: ■ All

Category: Presentation

Description: Come enjoy a slide show and presentation by Alberta astrophotographer, Alan Dyer (www.amazing-sky.net) - prepare to be amazed!

Cost: By Donation



Sunday, June 18

18B *The Art of Photographing Wildflowers*

Time: 7:00 am to 10:00 am
Presenter: Ian Wilson
Activity Level: ■ Moderate
Category: Photography
Description: How does one photograph a wildflower? Learn about depth of field settings, composition, coping with variable light and that pesky breeze. Ian is interested in helping those new to capturing wild- flower images, as well as those wishing to perfect their techniques. A tripod is useful.
Cost: \$45.00

18C *Wildflowers 101*

Time: 7:30 am to 10:30 am
Presenter: Jacinthe Lavoie
Activity Level: ■ Moderate
Category: Flora
Description: From Agoseris to Yarrow this workshop will help you learn how to identify flowers using blossom, stem and leaf features. You will also learn about flower families and how to use guidebooks to identify flowers. Discover the diversity of plants you never noticed before.
Cost: \$45.00

18D *Living Dangerously*

Time: 8:00 am to 11:00 am
Presenter: Lyndon Penner
Activity Level: ■ Moderate
Category: Flora
Description: When asked about the most dangerous things in the park, many people (incorrectly) assume that it must be bears or cougars. The truth is that there are far more dangerous plants in the park than there are animals. Join Lyndon for a fascinating session in which he will point out some of the most poisonous and deadly plants in the park; some of which are among the most poisonous in Canada! You'll be amazed at all the leafy green things growing in the woods that could easily kill you...
Cost: \$45.00

18G *Extraordinary Flowers in Easy Places*

Time: 8:30 am to 11:30 am
Presenter: Valorie Webber
Activity Level: ■ Easy
Category: Flora
Description: Get to know Waterton's beautiful wildflowers by venturing only a few steps from your car. View many wonderful species in various areas and see what lies just off the roadside.
Cost: \$45.00

18J *Wildflowers from Horseback*

Time: 9:00 am to 11:30 am
Presenter: Jo-Anne Reynolds
Activity Level: ■ Moderate
Category: Flora
Description: What could be more fun than riding a horse and flower watching at the same time? This program will start with some flower basics on the ground followed by a leisurely ride that will take you into different habitats to view dozens of different flower types. No riding experience is necessary. Please register at Alpine Stables.
Cost: \$90.00

18K *Wildflowers of the Redrock Parkway*

Time: 9:15 am to 12:15 am
Presenter: Brenda Holder
Activity Level: ■ Moderate
Category: Flora
Description: Waterton Lakes National Park is rich in plant species because the prairie runs right up against the mountains. Explore this landform phenomena, the diversity of wildflowers, their different habitats and the rock formations of the scenic Red Rock Parkway.
Cost: \$45.00

18L *Bee or Butterfly House Building for Kids*

Time: 9:30 am to 12:30 am
Presenter: Roger Riis
Activity Level: Age range 8-14
Category: Kids
Description: Kids, join Roger and build a butterfly or bee house - you get to choose which. While building your house you will learn how to help these natural pollinators do their job. Remember - bee, butterfly and birds houses are not allowed to be used in the park. Adult supervision not necessary. Please register as capacity is limited.
Cost: Free

18M *Where the Prairie Meets the Mountains*

Time: 12:45 pm to 3:45pm
Presenter: Ron McNeil
Activity Level: ■ Moderate
Category: Geology
Description: Join Ron and explore nature's biological and physical diversity near Bellevue Hill. Learn about the wide array of habitats, the vegetation types and soil parent materials that exist in this relatively small but unique area - where the prairie abruptly meets the mountains.
Cost: \$45.00

18N *Solar Stargazing*

Time: 1:00 pm to 4:00 pm
Presenter: Alan Dyer
Activity Level: ■ All
Category: Astronomy
Description: See our star up close through the Park's powerful telescope, equipped with a special solar filter for safe views of the Sun and sunspots. Hosted by astronomer Alan Dyer Please register as capacity is limited.
Cost: By Donation

18P *Wild Edibles*

Time: 1:00 pm to 4:00 pm
Presenter: Valorie Webber
Activity Level: ■ Moderate
Category: Flora
Description: Come seek out the things you COULD eat if you had to under Valorie's knowledgeable guidance and those you should NOT!
Cost: \$45.00

18Q *Connecting with the Natural World*

Time: 1:15 pm to 4:15 pm
Presenter: Bill Hanlon
Activity Level: ■ Easy
Category: Spiritual
Description: The program will explore the physical, emotional and spiritual benefits of connecting with nature, including the health benefits of movement within the natural world, and will highlight the significance of Aboriginal history on Waterton's magical landscape.
Cost: \$45.00

18R *Hawk's Nest*

Time: 1:30 pm to 4:30 pm
Presenter: Charlie Russell
Activity Level: ■ Easy
Category: Presentation
Description: Partake in tea and pie while feeling like you have gone back in time as you sit in the historic Hawk's Nest Outfitter Cabin. Listen to your host, Charlie Russell, while he shows pictures and tells stories of his life of finding and photographing wildflowers. Charlie has spent his life in Waterton and is the grandson of Bert Riggall, the original Waterton outfitter.
Cost: \$55.00

18S *The Beautiful Chemicals in beautiful Flowers (90min)*

Time: 2:00 pm to 3:30 pm
Presenter: Roy Golsteyn
Activity Level: ■ All
Category: Flora

Description: Join Roy Golsteyn, a cancer research scientist, who is investigating chemicals from native plants. Roy will share some of his experiences and experiments about chemicals that are present in native plants, including those that flourish in Waterton Lakes National Park. He will give you a healthy look at some of the nasty chemicals found in beautiful wild flowers.
Cost: \$20.00

18T *Learn to Drum*

Time: 3:00 pm to 5:00 pm
Presenter: Piikani First Nations
Activity Level: ■ All
Category: First Nations
Description: Listen, can you hear it? The sound is beginning to build. Learn the beauty and wisdom of First Nations stories when combined with the music and the rhythm. Learn from the Piikani First Nations on what the drum symbolizes and how you can learn to drum too. Please register as capacity is limited.
Cost: \$15.00

18U *Charles Waterton - The man who inspired Charles Darwin! (60min)*

Time: 4:00 pm to 6:00 pm
Presenter: Carol Patterson
Location: Opera House
Activity Level: ■ All
Category: Presentation
Description: Few people know about Charles Waterton for whom Waterton Lakes National Park is named, but he was one of the earliest conservationists. He created the first nature preserve, invented the artificial bird nest box, and wrote a book that contributed to Charles Darwin's decision to switch from medicine to natural history. Considered eccentric by his peers, he protected predators, a controversial decision for the era. Come to this session and learn more about Waterton, his conservation efforts, and whether his philosophies are still valid 150 years after his death.
Cost: \$20.00; Up to 18: \$10

18V *Annora Brown: Interpreter of the Foothills*

Time: 7:30 pm to 9:30 pm
Presenter: Joyce Sasse
Location: Lion's Hall
Activity Level: ■ All
Category: Presentation
Description: Come and enjoy a 40 min radio play on Annora Brown. Learn and gain insight on her and some of her colored images and 10 of her paintings.
Cost: By Donation

FESTIVAL SCHEDULE *Monday, June 19*

Monday, June 19

19B Capturing Wildflowers and Stunning Vistas - Photo Workshop

Time: 7:00 am to 10:00 am

Presenter: Ian Wilson

Activity Level: ■ Moderate

Category: Photography

Description: Learn to improve your landscape photography and discover use of natural light, composition, leading lines and other techniques to create stunning photographs. Creative use of depth of field, filters and slow shutter speeds will also be discussed while taking landscape photographs. Bring a tripod if you have one. A tripod is useful.

Cost: \$45.00

19C Where the Prairie Meets the Mountains

Time: 7:30 am to 10:30 am

Presenter: Ron McNeil

Activity Level: ■ Moderate

Category: Geology

Description: Join Ron and explore nature's biological and physical diversity near Bellevue Hill. Learn about the wide array of habitats, the vegetation types and soil parent materials that exist in this relatively small but unique area - where the prairie abruptly meets the mountains.

Cost: \$45.00

19D Extraordinary Flowers in Easy Places

Time: 8:00 am to 11:00 am

Presenter: Valorie Webber

Activity Level: ■ Easy

Category: Flora

Description: Get to know Waterton's beautiful wildflowers by venturing only a few steps from your car. View many wonderful species in various areas and see what lies just off the roadside.

Cost: \$45.00

19E In Search of Wildflowers - A Hike Up Sofa Mountain

Time: 8:00 am to 3:00 pm

Presenter: Jo-Anne Reynolds

Activity Level: ■ Challenging

Category: Flora

Description: Waterton Lakes National Park contains several different ecozones, each with its own characteristic vegetation. On this hike, we will travel through the grassland and aspen parkland and into the montane zone. We will see an amazing variety of wildflowers! Bring lunch and extra water. Lunch not included.

Cost: \$85.00

19F Nature's Medicine Cabinet - From Plants to Salves

Time: 8:15 am to 5:15 pm

Presenter: Brenda Holder

Activity Level: ■ Moderate

Category: First Nations, Flora, Spiritual

Description: This workshop will take place both in the field and in the classroom and will focus on the Traditional Use of Plant Medicines and how they fit in our world today. You will learn plant identification and plant use, including edibles (teas, syrups) and medicines (salves, poultices, liniments); you will also learn the methods of creating these products and have the opportunity of making some to take home. We will discuss the ethics of harvesting and plant respect. All plant material will be gathered before the festival and provided for the participants. Lunch not included.

Cost: \$99.00

19G Bears and Blossoms - a Walk with Charlie

Time: 8:30 am to 11:30 am

Presenter: Charlie Russell

Activity Level: ■ Moderate

Category: Fauna

Description: Discover the role bears play in the health of wildflower populations and hear stories and experiences of world renowned bear expert Charlie Russell as he shares his knowledge and viewpoint on bears and humans.

Cost: \$59.00

19H "Getting Wild With Acrylics" Two Day Workshop

Time: 9:00 am to 4:00 pm

Presenter: Brent Laycock

Activity Level: ■ All

Category: Art

Description: In this workshop, participants will explore concepts of colour and design through the process of painting the colourful world of Waterton's renowned wildflowers. Brent Laycock will explain and demonstrate the basic technical properties of acrylic paint, including the use of the various mediums and gels. Concepts such as transparency, opacity and viscosity will be clarified. Day One will focus on close-up images of wildflowers, and Day Two will be devoted to depicting wildflowers in the landscape. Painters at all levels of experience are welcome.

Cost: \$199.00

19K The Geology of Waterton - What Makes Waterton Unique

Time: 9:15 am to 12:15 am

Presenter: James Goulet

Activity Level: ■ Moderate

Category: Geology

Description: Waterton is a UNESCO World Heritage Site, in part due to its unique landscape, climate and watershed. James will explain some of the events over the past 2 billion years that have formed the Waterton of today.

Cost: \$45.00

19L Invigorate Your Senses

Time: 9:30 am to 12:30 am

Presenter: Lyndon Penner

Activity Level: ■ Moderate

Category: Flora, Spiritual

Description: It is often remarked that Waterton is a visual feast, but have you ever thought about indulging your other senses here? Join Lyndon for a session that will cater to all the wondrous and varied sensations that the park has to offer. You'll certainly see a lot of flowers, but you will also be invited to listen closely to the wind in the trees, smell the blossoms, and touch and taste them. For those who are interested in a more tactile and intimate connection with the earth, this will be a terrific experience.

Cost: \$45.00

19N "Photo Finesse" a 2 day workshop

Time: 1:00 pm to 5:00 pm

Presenter: Kyle Marquardt

Activity Level: ■ Moderate

Category: Photography

Description: Learn to take photographs with a little extra technical finesse. Let's capture a waterfall and turn it into a misty vaporous stream of clouds. Let us find landscapes, wildlife and flowers in the townsite and areas beyond to capture them in the most creative and unique

ways we can imagine. This workshop will include an indoor presentation portion to help mentally prepare you for the more advanced techniques and compositions before we go out and practice them. This group workshop also puts us in a position to inspire each other as we all go to the same places, but come up with perspectives that others haven't thought of. With that said, I encourage you to share your ideas and photos with each other. After two days of shooting we will gather up a few of your photos that you struggled with, returning to the classroom for a critique for further analysis and to find ways of improving them. This crucial feedback is in a constructive and supportive environment and is very important for the continued growth of a budding photographer. Bring a tripod and SLR. Optionally bring a laptop to help you go through your photos at the end of the day.

Cost: \$99.00

19P A Walk with the Authors

Time: 1:00 pm to 4:00 pm

Presenter: Ian Wilson & Jacinthe Lavoie

Activity Level: ■ Moderate

Category: Flora

Description: Take a walk with authors and photographer of "Wildflowers of Waterton Park" and catch their contagious passion for the beauty of Waterton Park and their feelings about wild places in general. Participants will have an opportunity to glean more knowledge about flowers from Jacinthe and pick up tips about photographing the flowering gems they see along the way.

Cost: \$55.00



*Make memories at the
Waterton Community Centre*

Located in the heart of Waterton, our beautiful renewed historic schoolhouse is the gem you've been looking for!

- A premier rental facility for weddings, reunions, retreats, seminars, conferences and more!
- Featuring: 2 classic schoolrooms, reception hall, full catering kitchen, gymnasium. Audio visual equipment and high speed internet available.



Waterton Park Community Association
Generations of Tradition
wcc.mywaterton.ca • 403.859.2042
wpca.assistant@gmail.com

Monday, June 19 – Tuesday, June 20 **FESTIVAL SCHEDULE**

19Q Vistas and Landscape Stories of the Bertha Trail

Time: 1:15 pm to 4:15 pm

Presenter: Ron McNeil

Activity Level: ■ Moderate

Category: Geology

Description: Join soil scientist Ron McNeil as he travels the Bertha Trail. Discover how the landscape, the soil and the flowers are all connected in a deep way. Reserve now

Cost: \$45.00

19R 100 Species Walk

Time: 1:30 pm to 4:30 pm

Presenter: Valorie Webber

Activity Level: ■ Moderate

Category: Flora

Description: Waterton is wonderfully rich with a diversity of wildflower species. On this walk, come search for and identify 100 species from A-Z with Valorie.

Cost: \$45.00

19T The Sights from Bear's Hump

Time: 2:00 pm to 5:00 pm

Presenter: James Goulet

Activity Level: ■ Challenging

Category: Geology

Description: Join James as he takes you up Bear's Hump. Enjoy amazing views of the plains to the east and the Waterton valley to the south. James will explain the forces of nature that have brought about the rocks you are walking over and the landforms you see. Elevation gain: 225m/740 feet

Cost: \$45.00

19U Bear Man of Kamchatka

Time: 4:00 pm to 6:00 pm

Presenter: Charlie Russell

Location: Opera House

Activity Level: ■ All

Category: Documentary

Description: Join Charlie Russell in watching 'The Bear Man of Kamchatka'. A 2006 BBC documentary about Charlie's incredible work with grizzly bears. See how he introduced wild grizzly bear cubs back into the wilderness. After this film you will look at bears differently. Following the movie you can ask Charlie Russell all of your desired questions.

Cost: \$20.00; Up to 18: \$10

19V Waterton Wild Presentation

Time: 7:30 pm to 9:30 pm

Presenter: Ian Wilson & Jacinthe Lavoie

Activity Level: ■ All

Category: Presentation

Description: Join Ian and Jacinthe for a multimedia presentation featuring their

wonderful photographs of the wildflowers and wildlife found in Waterton's landscape of sparkling lakes, impressive mountains, and wide-open vistas. Waterton Wild is an intimate portrait of the park, from the first crocus and colours of spring to the last pika and vibrant hues of late autumn.

Cost: By Donation

Tuesday, June 20

20B Photographing Wildflowers along the Bellevue Trail

Time: 7:00 am to 10:00 am

Presenter: Ian Wilson

Activity Level: ■ Moderate

Category: Photography

Description: Join Ian Wilson, author and photographer of Wildflowers of Waterton Park during his hands-on workshop. Learn to capture the fine details of wildflowers along the Bellevue Trail. Camera settings, use of depth of field to highlight your subject, the benefits of a tripod, use of lighting and composition and other close-up techniques will be discussed while photographing wildflowers. Discover how best to use the settings on your camera for the perfect image, and benefit from Ian's years of photographic experience. Bring a tripod.

Cost: \$45.00

20C The Geology of Waterton - What Makes Waterton Unique

Time: 7:30 am to 10:30 am

Presenter: James Goulet

Activity Level: ■ Moderate

Category: Geology

Description: Waterton is a UNESCO World Heritage Site, in part due to its unique landscape, climate and watershed. James will explain some of the events over the past 2 billion years that have formed the Waterton of today.

Cost: \$45.00

20D 100 Species Walk

Time: 8:00 am to 11:00 am

Presenter: Valorie Webber

Activity Level: ■ Moderate

Category: Flora

Description: Waterton is wonderfully rich with a diversity of wildflower species. On this walk, come search for and identify 100 species from A-Z with Valorie.

Cost: \$45.00

20E Métis Beadwork and Design Workshop

Time: 8:00 am to 3:00 pm

Presenter: Brenda Holder

Activity Level: ■ Easy

Category: First Nations

Description: Learn about the history of the Flower Bead Work People, Métis Design and history and the significance of the 5 petals in this stunning artwork. You will have hands-on instructions on creating your own keepsake flower beadwork pouch; all supplies included. Lunch not included. Indoor.

Cost: \$99.00

20G Wildflowers along the Prince of Wales Trail

Time: 8:30 am to 11:30 am

Presenter: Jo-Anne Reynolds

Activity Level: ■ Moderate

Category: Flora

Description: Discover the amazing variety of wildflowers that inhabit the different habitats surrounding this landmark; hear of the history and delight in the views.

Cost: \$45.00

20J Learn to Drum

Time: 9:00 am to 11:30 am

Presenter: Piikani First Nations

Activity Level: ■ All

Category: First Nations

Description: Listen, can you hear it?

The sound is beginning to build. Learn the beauty and wisdom of First Nations stories when combined with the music and the rhythm. Learn from the Piikani First Nations on what the drum symbolizes and how you can learn to drum too. Please register as capacity is limited.

Cost: \$15.00

20K Wildflowers 101

Time: 9:15 am to 12:15 am

Presenter: Jacinthe Lavoie

Activity Level: ■ Moderate

Category: Flora

Description: From Agoseris to Yarrow this workshop will help you learn how to identify flowers using blossom, stem and leaf features. You will also learn about flower families and how to use guidebooks to identify flowers. Discover the diversity of plants you never noticed before.

Cost: \$45.00

20M Movie - The Artist's Garden (90min)

Time: 12:00 pm to 1:30 pm

Presenter: Tickets sold at Opera House

Activity Level: ■ All

Category: Documentary

Description: Following the smash hit Painting the Modern Garden: Monet to Matisse from Season 3 comes a new film based on the hugely popular exhibition "The Artist's Garden: American Impressionism and the Garden Movement, 1887-1920" from the Florence Griswold Museum in Connecticut, widely considered a home of American Impressionism. Taking its lead from French artists like Renoir and Cézanne, the American impressionist movement followed its own path which over a thirty-year period reveals as much about America as a nation as it does about its art as a creative power-house. It's a story closely tied to a love of gardens and a desire to preserve nature in a rapidly urbanizing nation. Traveling to studios, gardens and famous locations throughout the United States, UK and France, this mesmerizing film is a feast for the eyes.

Cost: \$10.00 Adults \$7.00 Children

20T Hawk's Nest - A Memorial Walk for John Russell

Time: 3:00 pm to 5:00 pm

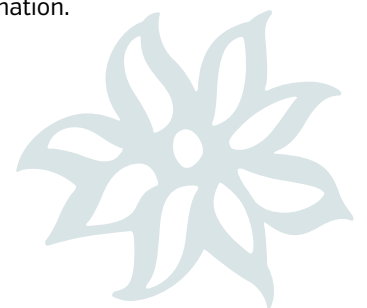
Presenter: Charlie Russell

Activity Level: ■ Moderate

Category: Special Event

Description: Charlie will lead a walk from the Hawk's Nest up to the Butte west of the house. Charlie says: "It is a hike that John and the rest of us who live here have done many hundreds of times because the Butte looks out over the ranch that has been in the family for 111 years. It is land that John had a great love for. He looked after it for most of his life, seeing that it was not grazed too heavily and that the fences are in good repair. He loved to do this and I will love to tell people about it and try to explain what made my wonderful brother tick. [Only problem is that I will not be able to get the names of all the parsnips and Solomon seals that the bears like to eat refreshed by him this year.]"- All donations will go to the Castle Crown Wilderness Association in John's name.

Cost: By donation.





MEET THE 2017 WILDFLOWER FESTIVAL PRESENTERS



ALAN DYER is an author of several books, and associate editor of *SkyNews*, Canada's magazine of stargazing, and a contributing editor to *Sky & Telescope* magazine.

His photos and videos have appeared on Spaceweather.com, National Geographic, CBSNews and more. The main belt asteroid #78434 is named in his honor. amazingsky.com



BRENDA HOLDER is a Professional Interpretive Guide, Interpretive Guide Group Management Instructor, First Aid instructor, and Keeper of her Medicine Lineage. She

takes great pleasure in sharing the knowledge that she has researched and gained through talking to elders about the rich Métis traditions of her heritage. Brenda offers Native Medicine classes in Canmore, Alberta.



BRENT LAYCOCK was born in Lethbridge, Alberta in 1947, and received an MFA at Brigham Young University in Utah. The

subject matter for much of his work comes from the variety of mountain, foothill, prairie and parkland landscapes that are accessible from his home in Calgary. Much of his landscape painting expresses his love of the panoramic expanse of earth and sky which he develops into lyrical compositions. His work is represented in many important corporate collections, in the university collections of Brigham Young University, the University of Alberta, and in public collections such as Calgary's Civic Collection, the Alberta Foundation for the Arts, the Glenbow-Alberta Institute, and the Royal Collection at Windsor Castle. The book *Waterton: Brush & Pen* features over one hundred Laycock paintings of Waterton Lakes National Park accompanied by essays by renowned author, Fred Stenson. Other articles and reproductions of his work have appeared in many Canadian and international art magazines, books and on two Canada Post stamps. WhitePine Productions has produced two instructional DVDs featuring Laycock's acrylic and watercolour techniques.



CAROL PATERSON ran away from a career as an oil and gas accountant, she's been writing about wildlife and adventure for publications including BBC

Travel, Fodor's Travel, Roads and Kingdoms, Alaska magazine, Avenue Magazine, Red Deer Advocate and Vacay.ca.



CHARLIE RUSSELL Local resident, Charlie Russell is changing our perception of the grizzly, the Great Bear. His books, films, and personal

presentations are spectacular in scope and an inspiration to experience.



DR. BILL HANLON is a family physician, pharmacist, expedition medicine consultant, travel and tropical medicine consultant. He is founder and

director of Basic Health International Foundation. Dr. Bill has summited the highest peak on all 7 continents including Everest in 2007. He has skied across Greenland and skied 1200 km from Hercules Inlet to the South Pole. His travel and adventure experience matches his love of the health, culture and spirituality of people living in remote, high altitude areas. basichealthinternational.org



DR. ROY GOLSTEYN is an Associate Professor of Biology and the Director of the Cancer Cell and the Natural Product Laboratories at the

University of Lethbridge in Canada. He undertook his PhD in biochemistry in Sir Tim Hunt's laboratory (Nobel Prize 2001) at the University of Cambridge. Roy completed his studies as a research fellow in Switzerland, and the Institute Curie in Paris. Prior to joining the University of Lethbridge, he was a senior research scientist in drug discovery with a pharmaceutical company in France. He has published more than 80 scientific papers and holds 5 patents. Roy was born and raised in Lethbridge and has always been fascinated by plants and animals of the great outdoors.



IAN WILSON has spent many years exploring and photographing northern Canada. His photographs have appeared in many

books and magazine across the country. His most recent books are *Waterton Wild*, *Wildflowers of Waterton Park*, and *Wildflowers of Banff Park*. Ian has also written five bestselling outdoor adventure books. He is now pursuing his passion of photographing wildflowers and wildlife. When he's not wandering in the mountains, Ian lives in Canmore, Alberta.



JACINTHE LAVOIE has been a flower-bug since her childhood days. With training as a researcher, she has observed and enjoyed nature through

each season. Her most recent books are *Waterton Wild*, *Wildflowers of Waterton Park*, and *Wildflowers of Banff Park*. Jacinthe has also written twelve educational books. She is now fulfilling her dream of writing about wildflowers and painting their beauty in watercolour. During the seasons when flowers are dormant, Jacinthe lives in Canmore, Alberta.



JAMES GOULET has a B.Sc. Honors in Geology and lives in Saskatoon, but has travelled all over Western Canada, Nunavut and Australia with geological

exploration work. He lives a very active lifestyle visible through his prominent involvement in officiating and coaching gymnastics.



JO-ANNE REYNOLDS lives on the prairie but loves to play in the mountains. She teaches at Medicine Hat College, in the

Environmental Science and Ecotourism and Outdoor Leadership programs. She enjoys interpreting nature, facilitating outdoor activities, and has a passion for 'botanizing' with people.



KIM PEARSON works as an Ecosystem Scientist for Parks Canada coordinating grassland restoration, wildlife movement and

species at risk projects, among others. She collaborated for ten years on the Nature Conservancy of Canada's neighbouring Waterton Park Front Project and has consulted on various projects for organizations such as the Southern Alberta Land Trust Society, Alberta Fish and Wildlife and Canadian Wildlife Service. Kim has been identifying birds by ear for nearly twenty years; it is a practice she honed while conducting point counts for Parks Canada prior to the advent of digitized surveys. She and her family are proud to call the Waterton area home.



KYLE MARQUARDT has been hooked on photography ever since experimenting with his first digital camera in high school. After attending

Ryerson University in Toronto and learning more traditional darkroom processes, Kyle returned to the prairies and mountains he loves in Calgary, Alberta. Kyle's photography became a passport to new places when he took on the role of photography guide; escorting artists, enthusiasts and photographers alike to the Arctic and Antarctic where some of the most stunning landscapes and wildlife exist. Logging over 30 polar expeditions, Kyle isn't averse to teaching his techniques to others; there are no secrets and Kyle enjoys nurturing a photographer's talent. Having a fervid taste for diversity and new challenges, Kyle can be seen from culinary to commercial photography, anything creative and new to keep his photographic eye fresh. His work is printed on a myriad of materials and media; from videos and slideshows to canvas gallery wraps.



LYNDON PENNER grew up in rural Saskatchewan and has spent all of his time and energy on gardening since he was very young. He

started working in the horticulture industry at the age of 16, and now writes, lectures, and teaches all over western Canada. When he is not pulling weeds in the garden or tromping all over the mountains in search of some obscure wildflower, Lyndon likes to spend time with his nephews or sitting quietly somewhere with a good book to read and a cup of coffee. His passion for Canada's native plants is what first brought him to Waterton and he is thrilled to be your guide to some of the country's most beautiful flowers.



MARGARET BEST lives in Alberta and loves Waterton. She is an accomplished and internationally recognized

botanical artist and teacher, who has taught, and been recognized and exhibited in Canada, the USA and in the United Kingdom. bestbotanical.com

PIIKANI GROUP Piikani Traditional Knowledge Services is a department of the Piikani Nation whose mandate is preservation and enhancement of Piikani-Blackfoot heritage and culture. As such we provide educational outreach with a variety of programs and services available in cross-cultural awareness and understanding. PTKS operates out of the Buffalo Skull Lodge located on the Piikani First Nation in Southern Alberta, Canada.

ROGER RIIS Since learning about Mason bees a few years ago Roger has spent a lot of time researching the effects of pollution on the environment. Roger takes great interest in teaching about pollination to all that show interest. He especially enjoys talking to younger people because "they are the ones having to deal with mistakes made by my generation."



RON MCNEIL is a soil and land resource scientist who specializes in natural resource inventories, ecological land classification, soil survey and interpretative products

from inventories. Ron was instrumental in developing the link of soils and ecological range sites to native plant communities, which has been valuable for habitat management and species at risk. Ron also helped develop the 2010 reclamation criteria for native grasslands and cultivated lands in Alberta.



RYAN HEAVY HEAD, AKÁYO'KAKI, is a well-known naturalist in Southern Alberta, equally recognized for his Blackfoot traditional-knowledge approach to ecological

studies, and for his role as the lead conservator for prairie rattlesnakes in the city of Lethbridge. Heavy Head holds a Blackfoot Eminent Scholar Kainai Doctorate from Red Crow College and the Blood Tribe, a Masters degree in cultural anthropology from the University of Lethbridge, and principal transfer rights in the Niitsitapi discipline of Beaver Bundle Caretaking. He was formerly the Director of Kainai Studies at Red Crow Community College, and is currently envisioning the development of a private school without walls, The Aimmoniisiiksi Institute, which will offer learning opportunities for all ages, anchored in the Blackfoot knowledge paradigm.



VALORIE WEBBER is a studied lover of everything floral with a repertoire of over 500 wildflower species. Valorie is also a gardener for hire and is involved with invasive species control.



Find Your Next
Adventure
In Waterton, Alberta

Waterton Lakes Lodge Resort
www.watertonlakeslodge.com
1-888-985-6343

Crandell Mountain Lodge
www.crandellmountainlodge.com
1-866-859-2288

Aspen Village
www.aspenvillageinn.com
1-888-859-8669

Vimy's Lounge & Grill
www.vimys.com
(403) 859-2150

Pearls Cafe
www.pearlscafe.ca
(403) 859-2660

Pizza of Waterton
www.pizzaofwaterton.com
(403) 859-2660


WATERTON
LAKES LODGE RESORT


CRANDELL
MOUNTAIN LODGE


ASPEN
VILLAGE


Vimy's
LOUNGE & GRILL


PEARLS CAFE


PIZZA OF
WATERTON

WHAT'S NEXT

Learning about wildflowers is a wonderful way to connect with nature. Once you start you'll begin to notice the insects, birds, and mammals associated with them. We invite you to return this fall to take part in the Waterton Wildlife Weekend September 22 - 24. See you at next year's Wildflower festival in mid-June 2018.

Keep on botanizing!

Sincerely,

The Waterton Festivals Team



© Katherine Matiko

Cruise Waterton Lake



Wildflower Festival Cruises

- View Spectacular Mountain Scenery
- Professional, entertaining commentary
- Hike Canada's #1 Trail - Crypt Lake

Waterton Inter-Nation Shoreline Cruise Co.

Box 126, Waterton Park AB T0K 2M0
 T 403.859.2362 F 403.938.5019
 E cruise.info@watertoncruise.com
www.watertoncruise.com

PRINCE OF WALES HOTEL

Accommodations available
 May 26 - September 21

GLACIERPARKINC.COM/PRINCE | 844.868.7474



49th North Pizza



Gourmet Pizza
 Fresh Ingredients
 Cold Craft Beer

Order Take-Out Now:
403-859-3000



CARIBOU CLOTHES

CARIBOU CLOTHES ON MAIN ST.
 LOCALLY-MADE SHEEPSKIN AND RABBIT
 FUR MOCCASINS. FLEECE & LEATHER
 JACKETS. HATS, GLOVES, BLANKETS.
 JEWELLERY AND POTTERY. CHECK OUT
 OUR GREAT LOW PRICES!

403.859.2346



Crooked Creek Campground



Affordable | Convenient
 Reservations accepted
 Full-service, semi-serviced and
 unserviced sites | Tenting under trees
 Shower, Laundry
 On the Park boundary
 5.6 km east of the Park Gate

mid-May - early September
 T 403.653.1100




LAKESIDE
chophouse

Superb cuisine . Local Craft Beers . Fresh locally sourced cuisine
Lakefront Restaurant and Patio . Relaxed Ambiance

Located at the Bayshore Inn Resort & Spa on Main Street
Waterton Lakes Park, AB

For reservations call: 403.859.2211

THIRSTY BEAR

SOCIALHOUSE + BEER + BITES

Main Street, Waterton | 403.859.2211 | thirstybearsaloon.ca

WATERTON'S PLACE TO BE(ER).

[NEW AMAZING MENU + 10 LOCAL CRAFT BEERS + NEW LARGE PATIO + LIVE MUSIC]

Waterton Wildlife Weekend

September 22 - 24, 2017

Experience Nature at its Best

Photo: Lem Grant

Wildlife – Walks – Talks
Photography – Natural History
Arts – First Nations



1-877-780-1998

watertonwildlife.com

Waterton Lakes National Park

