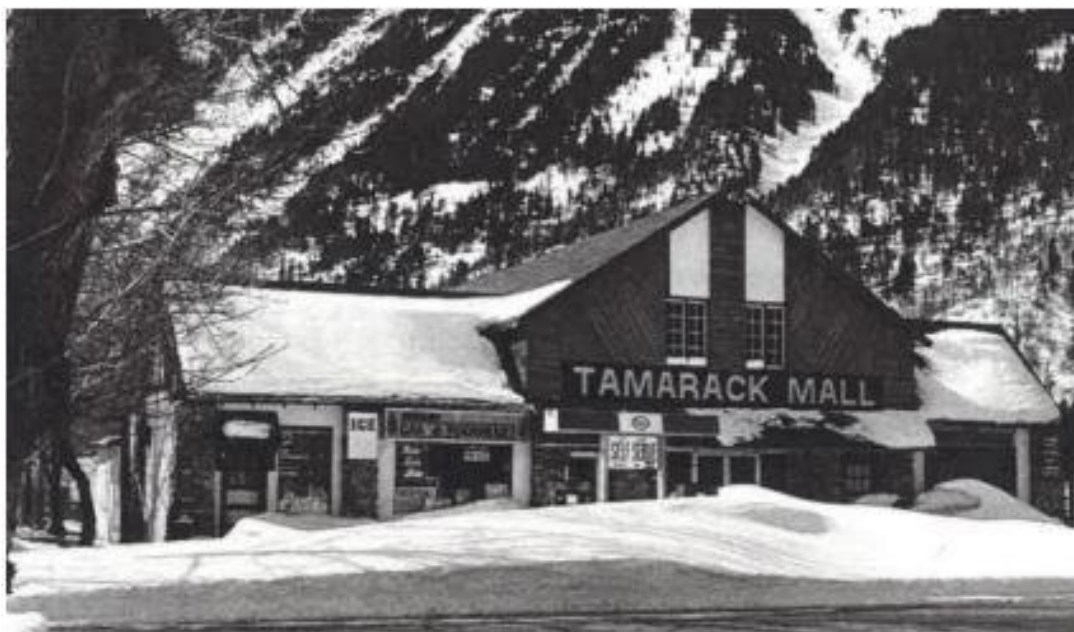


WATERTON HISTORICAL BUILDINGS

“The Tamarack Outdoor Store”
212 Mount View Road

#1 on the History Walking Tour



Parks Canada Collection

Built to include an automobile showroom, a garage and an office, the exterior lines of this building are unchanged from 1932, despite many interior renovations. The original owner, George Baker, used the building for his many enterprises, and over 90 years later, his descendants still own and operate the business!

BUILT: 1932

BUILDERS: Carl Carlson and Erik Haggland for George Baker

PREVIOUS USE: A cabin for Elsie Baker was built on the lot in 1924, but was demolished to make way for the large building.

OF NOTE: Was the oldest retail outlet for Imperial Oil for many years.

Parks Canada Heritage Character Statement:

Essentially the first Park Transport Building, this building is a good representative of the transportation theme in the park. It has not been substantially altered, although the connection with transportation is no longer apparent. Although the historic character of the building has been marred by the application of obtrusive wooden siding, this feature is reversible.

Character Defining Elements

The stucco exterior with cobblestone piers, exposed rafters and the large centre gable. Half timber detail is missing but could be replaced.