

**WHITEFISH**  
MONTANA

# Travel Guide

2021–2022

**4 SEASON  
GUIDE**

**PLAN THE  
ULTIMATE  
WHITEFISH  
VACATION**

EXPLORE**WHITEFISH**.COM





# WELCOME TO WHITEFISH MONTANA

Dear Traveler,

I am proud to welcome you to our one-of-a-kind mountain community. Whitefish remains a small town filled with a cross section of people who care deeply about and contribute to this vibrant, unique place every day. When times are especially hard, we continue to unite around the common denominators of community strength, helping our neighbors, and our love for recreation and conservation.

You play an integral role in contributing to our welcoming and kind-hearted culture. Throughout your stay, I encourage you to get to know Whitefish on a personal level. Seek off-the-beaten-path finds, converse with a local, choose the trail less trodden (but stick to the trails, as many of our recreational amenities traverse both private and public land!). Every corner of this community is exceptional and there is plenty to explore.

Recently, we have been prompted to look at our town through clearer lenses of inclusivity, community health, and environmental stewardship. As a result, we have committed to new ways of treating each other, new behaviors for respecting each other to prevent illness during the pandemic, and new strategies for sustaining the natural beauty surrounding our mountain town.

Whether it's the powder you skied, the huckleberries you foraged, or the view that took your breath away, I know your time here will turn into lifelong memories. Your patronage is so important to us, and it may require a little more planning, diligence, and flexibility these days. Thank you for getting to know our town even during challenging times.

While you are here, I hope you experience firsthand the care and love we have put into this community. This special place did not come to be by chance. Generations have rolled up their sleeves and worked hard together, unifying the values we share as a community. I encourage you to interact with kindness, recreate responsibly, and treat it like your own home.

Whitefish has made its way into so many hearts and minds for a reason. I know you will see why when you visit this magnificent place we call home.

Mayor John M. Muhlfeld  
Local resident for 26 years



SEASONS .....	4
PLEDGE FOR THE WILD .....	12
RECREATE RESPONSIBLY .....	13
ACTIVITIES .....	14
SHOPPING .....	20
WELLNESS .....	24
ARTS & CULTURE .....	28
CALENDAR OF EVENTS .....	33
STAY .....	34
EAT & DRINK .....	42
BANKS .....	50
NORTH FLATHEAD VALLEY MAP	51
GET HERE .....	52
WHITEFISH MAP .....	54

#### **WHITEFISH CONVENTION & VISITORS BUREAU**

VISITOR INFORMATION CENTER

505 East 2nd Street, Whitefish, Montana 59937

**877-862-3548** (Toll Free) **406-862-3395** (Local)

**info@explorewhitefish.com**

P.O. Box 4232, Whitefish, Montana 59937

**406-862-3390** (Admin Office)

© 2021 Whitefish Convention and Visitors Bureau.

This publication was developed by Whitefish Convention and Visitors Bureau. Each property and service described in this publication are independently owned and operated and are members of the Whitefish Convention and Visitors Bureau, a non-profit member organization. Please help support our members! Your comments and feedback are welcome. Please email us at [info@explorewhitefish.com](mailto:info@explorewhitefish.com). Unauthorized reproduction or use of this publication in whole or part is not permitted. Printed in U.S.A. for domestic and international distribution.

Cover Photo: Visit Montana

Photo: Explore Whitefish, Whitefish Lake sunset from Whitefish City Beach



explorewhitefish



whitefishmt



A full-page photograph of a mountain biker descending a dirt trail. The biker is wearing a blue jacket, teal pants, and a grey helmet. The trail is surrounded by a dense forest of evergreen trees. In the background, a lake and distant mountains are visible under a dramatic sunset sky with orange and blue hues. The title "AUTUMN ADVENTURES" is overlaid in large white serif font.

# AUTUMN ADVENTURES

Photo © Marc O'Brien, The Whitefish Trail in Haskill Basin





Photo © Noah Couser, The Rooftop SkyBar at Casey's



Photo © Explore Whitefish, Depot Park in Whitefish



Photo © Explore Whitefish, Whitefish Pedestrian Paths near Whitefish City Beach

## FALL IS PRIME TIME

in Whitefish—sunny and warm with trails waiting to be explored and rivers and lakes to paddle on with hardly another soul in sight. The Western Larch trees turn a brilliant gold and snow dusts the high peaks, providing a breathtaking view for hiking, biking and paddling around Whitefish and Glacier National Park. Indulge culinary senses when local farms celebrate the harvest with farm-to-table dinners.

## A PERFECT DAY

We start the perfect day with a leisurely breakfast at the Garden Wall Inn, enjoying delicious dishes prepared using ingredients from local farmers and served al fresco on the charming front porch. After a last sip of coffee, brewed with beans roasted in Whitefish by Montana Coffee Traders, we walk across the tree-lined street to Whitefish Outfitters & Guides to pick up an inflatable kayak rental. We put into the Whitefish River at Riverside Park. We enjoy the calm crisp morning paddling up the peaceful Whitefish River along the River Trail, passing by Kay Beller Park and Roundhouse Landing. Reaching the mouth of the river at Whitefish Lake, we paddle up into the lake, cruising along the shore admiring the mirrored golds and greens of autumn foliage and the blues of mountains and hillsides reflected on the still, glassy water. Paddling back into the river and floating downstream, we share the water with Goldeneye, Bufflehead, and Mallard ducks, and perhaps a black bear on the far shore. The sun on the water is warming us up, so we pull into the Roundhouse dock and take a quick dip in the crystal-clear water.

After returning the kayak, we stop at Third Street Market to pick up a few treats for an afternoon picnic in Glacier National Park. A scenic thirty-minute drive brings us to Glacier Park, with the trailhead for Apgar Lookout near the entrance. A 3.3-mile hike, enjoying the afternoon sun and spectacular splashes of color on the hillsides, brings us to the mountain-top lookout. Once there, an expansive view of Lake McDonald and its glacial valley, with the Garden Wall and the Crown of the Continent peaks in the distance, spreads out before us.

After returning to Whitefish, we relax in the Inn's garden, sampling hors d'oeuvres featuring fare from local farms. As the sun gets low, we stroll down Central Avenue to Tupelo Grille, for cocktails in the laid-back lounge, entertained with live music and eclectic art. Next, we move to a table in the dining room for a delicious dinner. We order the Fresh Seafood Special and Bison Tenderloin entrees, being careful to save room for their world-famous Bread Pudding.

As we stroll back to the Inn, we do a little window shopping, planning some purchases for the next day. We walk along under the starry sky, soaking in the pleasant evening, and reliving the beauty of a perfect day.

~ Rhonda Fitzgerald, Owner of The Garden Wall Inn





# WINTER WONDERS





Photo © Chuck Haney, Trees in alpenglow viewed from Whitefish Mountain Resort

## THE PEAKS OF GLACIER NATIONAL PARK

are the backdrop for winter adventure. Home to world-class skiing and snowboarding at Whitefish Mountain Resort, Whitefish also offers cross-country skiing, snowshoeing and snowcat skiing. Snuggle up for a horse drawn sleigh ride, or pretend to be an Iditarod musher on a dog sledding expedition. Off-snow adventures abound with fitness studios, ice skating, great shopping and dining.



Photo © Explore Whitefish, Glacier National Park viewed from Whitefish Mountain Resort

I check the  
Snow Report at  
[skiwhitefish.com](http://skiwhitefish.com) and my  
suspicions are confirmed  
— it's a powder day!

### A PERFECT DAY

As I reach over to turn off my alarm and rub the sleep from my eyes, I catch a glimpse of fresh snow outside my window. I check the Snow Report at [skiwhitefish.com](http://skiwhitefish.com) and my suspicions are confirmed—it's a powder day! I grab my ski gear and head to Amazing Crepes for a quick breakfast and some liquid motivation. While sipping my coffee, I decide to catch the S.N.O.W. Bus so I can skip the parking hassle and make a beeline for the lifts. After a full day of powder face shots and belly laughs with friends, my legs are toast and I'm ready for a cold beer, so I slide down to Ed & Mully's for some après-ski. A day of skiing powder really works up an appetite, so I hop back on the S.N.O.W. Bus and head to downtown Whitefish to meet friends for some delicious scratch pasta and pizza at Abruzzo Italian Kitchen. While twirling my pasta, I overhear friends debating the weather and where the deepest powder can be found—"another 8-inches forecast for tomorrow?!" My appetite satiated, I sit back, smile and reflect on another perfect day in Whitefish.

~ Zak Anderson, Bartender at Abruzzo Italian Kitchen





# SPRING DISCOVERY



## SPRING IS THE SECRET SEASON

in Whitefish. Snowplows push their way up Glacier National Park's Going-to-the-Sun Road, allowing scenic bike rides and casual hikes before the alpine road is opened to motor vehicles. The waterfalls are in full action and the motor-free road provides a quiet gateway into the heart of the park. Rent a paddleboard or kayak and float lazily down the Whitefish River as it meanders through town or meet up with a guide to find the perfect fishing hole. The Whitefish Trail is in prime condition for hiking and mountain biking as spring wildflowers line the trail.



Photo © Explore Whitefish, The City of Whitefish



Photo © Explore Whitefish, Going-to-the-Sun Road

The night ends  
with us sitting on a  
covered deck watching  
the sky light up with  
an exhilarating spring  
thunderstorm over  
the mountains.

### A PERFECT DAY

Spring in Whitefish has a special magic for my family. A perfect day starts off by sneaking in an early morning workout at The Wave Aquatic & Fitness Center to get the blood flowing and give us an opportunity to catch the sunrise. Afterwards, a Tumeric Spice Latte from Montana Coffee Traders would be much needed before breakfast at Loula's Cafe where I try to decide between the stuffed french toast or the eggs Benedict. The leisurely morning involves strolling through downtown, stopping by Bookworks Independent Bookstore, Sage & Cedar for some candles and soaps, Harlow for a new show-stopping dress, The Toggery because there's always time for new boots, Trovare to browse new kitchen gadgets, and finally to Imagination Station where Denise always has the greatest gifts for our kids. After grabbing a pour-over coffee from Wild Coffee, we head to Markus Foods to select a few picnic items to take on our early afternoon walk on the Whitefish town paths, following along the Whitefish River to Whitefish City Beach where we admire the dynamic spring skies and see Whitefish Lake mid-thaw. Sporting my new dress and boots, we head to dinner at The Last Chair Kitchen & Bar for one of Head Chef and Owner Tim Good's culinary creations. Following dinner, we attend a Black Curtain Production by the Whitefish Theatre Company. The night ends with us sitting on a covered deck watching the sky light up with an exhilarating spring thunderstorm over the mountains.

~ Jessie Farnes, Cafe Coordinator at Montana Coffee Traders





# SUMMER ESCAPE



## SEEMINGLY ENDLESS DAYLIGHT

gives ample time to experience Whitefish. Millions of acres of protected state and federal lands surround Whitefish, offering miles and miles of scenic roads and trails to explore. For water enthusiasts, a variety of lakes and rivers provide ample opportunities to kayak, paddleboard, raft and fish. Live music and festivals round out fun-filled days.

## A PERFECT DAY

My perfect summer day starts downtown before things get busy. We stop by Fleur Bake Shop for exquisitely baked pastries, coffee to go, and treats for later. Then, we head out for a hike in the vast forests that surround Whitefish in all directions. I stop by Nelson's Hardware and Sportsman & Ski Haus to make sure we have plenty of water, bear spray and trail snacks. Some days, we head to Jewel Basin. Others, it's the Great Bear Wilderness across the river from Glacier National Park. Even in the height of summer, you can still find places where you don't see another hiker all day. If you are lucky, you will find an unpicked stash of huckleberries. After the hike there is a treat waiting for us in the car, a cooler stocked with world-class beer from Bonsai Brewing Project.

At the end of the day, we return to civilization. As soon as we get back into cell service, I place a to-go order from Wasabi Sushi. While waiting for our food, we stroll up Central Avenue for a quick stop at Spotted Bear Spirits. Some days we stay for drinks, others I just grab all the fixings to go. We pick up our food and retire to our deck. Before you know it, it's 10 o'clock and the sun is finally setting. We raise a glass to toast a day well spent.

~ Mariah Joos, Owner of Nelson's Ace Hardware

## HOW TO MAXIMIZE YOUR SUMMER EXPERIENCE

Summer is a busy time in Whitefish and for good reason.

Here are some tips:

- + Visit [glacierpark.info](http://glacierpark.info) for latest Glacier National Park information
- + After a day in Glacier, enjoy a day at Whitefish Mountain Resort, the Whitefish Trail or our State Parks. There are an abundance of activities in and around Whitefish.
- + Call ahead for restaurant reservations.
- + Consider alternative modes of transportation such as the S.N.O.W. Bus, Whitefish Shuttle or renting a bike.
- + If you choose to rent a car, make your reservation early as supply is limited during the summer months.
- + Parking downtown can be at a premium, so you may have to walk a few blocks to your desired destination.



Photo © Jordan Haggard, The Whitefish Trail



Photo © Explore Whitefish, Whitefish Mountain Resort



Photo © Explore Whitefish, The Flathead River



# PLEDGE FOR THE WILD: BE A STEWARD OF THE LAND

The Whitefish community has banded together to permanently protect the open spaces that surround us. These are the watersheds that supply clean drinking water for our residents and visitors. We've worked hard to create trailheads and 50 miles of hiking and biking trails with close access to town. Consider this a gift.

We ask you to treat our rivers, lakes, and mountain trails like the delicate resource they are. We really need your help to protect public lands and respect private land. And please — always give wildlife the right of way. Keep your distance from wild animals and take that photo with a zoom lens. Then share your photos responsibly.

Help support responsible recreation in wild places surrounding Whitefish. **Text WILD4WHITEFISH to 44321 to give to The Whitefish Trail and our open spaces.** Consider donating \$1 for every mile you hiked, biked, ran, or skied on the trail.



#RecreateResponsibly





# EXPLORE RESPONSIBLY



You made it! Now that you're here, check out our guide for exploring responsibly. While we could likely make a case for many of these reminders in any season, consider this your starter pack to getting out there safely. Above all, make sure you check out local health guidelines at [ExploreWhitefish.com](https://ExploreWhitefish.com).

## SPRING

- When you're biking the Going-to-the-Sun Road, remain 25 yards from wildlife, and 100 yards from bears and wolves. Stay in the right lane.
- If a jaunt on the Whitefish Trail system is on your list, it's best to visit in the morning while the ground is still frozen. Stepping around muddy sections can create lasting trail damage.
- Predict spring's unpredictable weather. Pack food, water, and warm layers, and have a backup plan.

## SUMMER

- Leave No Trace (that means TP too).
- Remember to put out campfires properly! Douse, Stir, Douse and Feel.
- Always carry bear spray.
- When camping or picnicking, store food in your locked vehicle.
- Step to the side to let speedy hikers pass — prevent bottlenecks on the trail.
- Whether driving on dirt or paved roads, slow down and always give pedestrians the right of way.

## FALL

- Sport bright colors when you hit the trail as it's hunting season. Make sure hunters can tell you're a human!
- Make noise on the trail so you don't sneak up on any forest friends (yes, bears!). They are heads down stocking up on nutrients.
- Obey seasonal closures in Glacier National Park. Gates are there for your safety.

## WINTER

- Bring a face covering for your days on Whitefish Mountain Resort.
- Hop on the S.N.O.W bus or walk to your destination whenever possible.
- Snag an uphill pass before you embark on the Whitefish Mountain Resort skin track, and follow the route signs!
- Check out Flathead Avalanche Center for all your backcountry planning.
- Safety courses are also available throughout the fall and winter.



# A REASON FOR EVERY SEASON

**SETTLED ALONG THE EDGE** of Whitefish Lake and in the shadows of spectacular mountain ranges, Whitefish has endless opportunities for outdoor recreation and fun adventures. Grab a backpack for a hike in Glacier National Park, or go on a guided rock climbing or snowshoe tour. For those who never leave golf clubs at home, Whitefish is home to the popular 36-hole Whitefish Lake Golf Club (which converts to the Glacier Nordic Center in the winter). Saddle up for a horse-trail ride, or grab your bicycle and explore the landscape on two wheels.



Photo © Visit Montana, Glacier National Park



Photo © Explore Whitefish, Going-to-the-Sun Road





Photo © Jordan Haggard, The Whitefish Trail

## PLAY ON THE WATER

Take a picnic to City Beach, Whitefish Lake State Park or Les Mason State Park along the shores of Whitefish Lake or paddle the meandering Whitefish River on a paddleboard or kayak. Numerous smaller lakes and streams surround the area for fishing, boating and swimming options.

## EXPLORE WHITEFISH BY BIKE

Cyclists will find miles of paved and unpaved country roads ideal for road and gravel cycling. The Whitefish Trail encompasses 43 miles of beginner and intermediate trails surrounding Whitefish Lake or try out the mountain biking trails at Whitefish Mountain Resort which offer 30+ miles of lift-accessed and xc trails for every ability level. Take a leisurely bike ride along the Whitefish River on the bike and pedestrian trail system. Cyclists will find plenty of bike-friendly businesses in town to replenish supplies or rent a bike.

## WATCH FOR WILDLIFE

One of the wonderful aspects of recreating in the mountains around the small mountain town of Whitefish is the fact that we are not at the top of the food chain. That's right, we live and recreate among bears, wolves, wild cats, and more. They are beautiful but dangerous if you do not pay them the respect they deserve.



Photo © Brian Schott, Whitefish Lake Golf Course

## WILDLIFE SAFETY TIPS

- + **Keep a Safe Distance**
  - 100 yards/300 feet for bears, wolves, mountain lions
  - 25 yards/75 feet for goats, sheep, elk, moose, deer
- + **Never Approach a Wild Animal**
- + **Always Carry Bear Spray**
- + **Secure Your Food & Garbage**
- + **Hike In Groups**
- + **Make Noise**
- + **Be Aware of Your Surroundings**

For more info and tips, visit [explorewhitefish.com](http://explorewhitefish.com)

## WILDLIFE VIEWING SPOTS

- + Mountain goats and bighorn sheep are often seen near Logan Pass in Glacier National Park.
- + Grizzly and black bears can be spotted all over the area, but are commonly viewed throughout Glacier National Park.
- + Herds of elk can occasionally be seen on the way up to Whitefish Mountain Resort or along the North Fork Road while driving up to Polebridge.
- + The occasional moose can be found in the heavily vegetated riparian areas of lakes and streams, or foraging in the high alpine valleys.

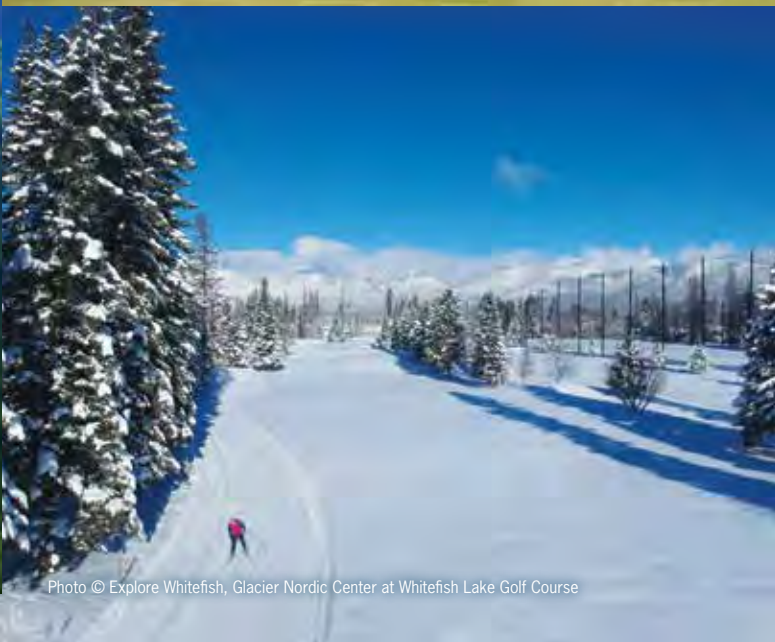


Photo © Explore Whitefish, Glacier Nordic Center at Whitefish Lake Golf Course



## RATED #3 RESORT IN THE WEST

~ SKI MAGAZINE READERS IN THE 2021 READER SURVEY



Photo © Visit Montana, Whitefish Mountain Resort

### WHITEFISH MOUNTAIN RESORT

Only 15 minutes from downtown, Whitefish Mountain Resort offers world-class skiing and snowboarding with a laid-back feel. Over 330 inches of Rocky Mountain snowfall covers 3,000 acres of glades, groomers, bowls and steeps with slopes for every ability level. Most recently, Whitefish Mountain Resort was ranked **#2 in Service, Overall Satisfaction, and Value** and, perhaps most notably, **#1 in Local Flavor** as voted by the readers of SKI Magazine in the annual reader-ranked survey for resorts across Western North America.

From late-May through the end of September, Whitefish Mountain Resort is a basecamp for adventure with zip lines, alpine slides, lift-served and xc mountain biking, an aerial adventure park and Montana's only mountain-top restaurant accessed from the scenic lift or hiking trails.

### SKI RUNS TO NOT MISS

- + The views of the Flathead Valley on *Inspiration*
- + The rolling hills on *Hellfire*
- + Powdery turns along *North Fork*
- + Views of Glacier Peaks while dropping into *North Bowl*

### QUICK PICK BIKE RIDES

- + Going-to-the-Sun Road in the spring (scenic alpine road biking)
- + Kashmir on Whitefish Mountain Resort (lift-served downhill mountain biking)
- + Haskill Basin section of The Whitefish Trail (multi-use, all skill levels)
- + Otter Pop on Spencer Mountain (intermediate freeride trail)
- + Bike and pedestrian trails within Whitefish (multi-use, all skill levels)
- + Upper Whitefish Lake Road (gravel riding)



Photo © Glacier NPS, Going-to-the-Sun Road



## GLACIER NATIONAL PARK

Whitefish is only 25 miles from Glacier National Park, a World Heritage Site, Biosphere Reserve and the world's first International Peace Park. More than 700 miles of hiking trails provide opportunities to explore mountain lakes, glaciers, waterfalls, native plants and lots of wildlife. The Going-to-the-Sun Road is a highlight for seasonal visitors. Called "the most beautiful piece of mountain road in the world" for good reason, the road is a national historic landmark. Open in the summer and early fall months (typically late June through mid-October), it can be traveled by personal car, free shuttle, a narrative Red Bus Tour or a Native American Sun Tour. When the alpine sections of The Going-to-the-Sun Road are under snow in the spring and fall, many miles are open to bikers and hikers looking to explore the secrets of the park.

Experience the tranquility of Glacier National Park when it's covered in snow. During the quiet season, Going-to-the-Sun Road is plowed from West Glacier to Lake McDonald Lodge offering visitors a scenic drive and plenty of opportunities to snowshoe and cross country ski while watching for the wildlife.

Experience  
Glacier's  
pristine forests,  
lakes, alpine  
meadows,  
and rugged  
mountains.



Photo © Visit Montana, Glacier National Park



Photo © Visit Montana, Glacier National Park



Photo © Visit Montana, Glacier National Park

## OUTDOOR ACTIVITY IDEAS

- + Rock climbing with Rock Climb Montana
- + Paddleboarding on Whitefish River
- + Picking huckleberries on the Danny On Trail
- + Play a round at Whitefish Lake Golf Club
- + Horseback riding at Bar W Guest Ranch
- + Snowshoeing in Glacier National Park

## QUICK PICK DAY HIKES

- + *The Danny On Trail* at Whitefish Mountain Resort
- + Beaver Lakes Trailhead to the South Beaver Loop on *The Whitefish Trail*
- + *Virginia Falls* in Glacier Nat'l Park
- + Swift Creek Trailhead to Smith Lake on *The Whitefish Trail*
- + *Stanton Lake Trail* in the Flathead National Forest



# ACTIVITIES

## 2FlyUs Hot Air Balloons

Sunrise & Sunset Balloon Rides June-Sept  
602-525-4282; 2FlyUs.com

## Backcountry Flying Experience

Float Plane Tours of Glacier Country  
406-890-3419;  
backcountryflyingexperience.com

## Big Sky Brews Cruise

Flathead Valley Brewery Tours  
406-303-3559; bigskybrewscruise.com

## Glacier Adventure Guides

Guided Adventure Tours, Cross-Country Ski,  
Snowshoeing; 406-892-2173; 24 7th St. West;  
glacieradventureguides.com



## Welcome to Western Montana's Glacier Country

Truly authentic experiences are found in Glacier Country—a natural beauty of mesmerizing peaks and glistening waters among charming small towns brimming with arts and culture and surrounded by unparalleled outdoor recreation. Please travel and recreate responsibly.  
#GlacierMT

800.338.5072; glaciermt.com

## Glacier Nordic Center

Groomed Trails, Night Skiing, Rentals, Lessons  
406-862-9498; glaciernordicclub.com  
1200 Hwy 93 W, on the Golf Course

## Great Northern Powder Guides

Cat Skiing/Boarding, Guided Backcountry Powder; 406-881-2032  
greatnorthernpowderguides.com



## Hank's Hatchets Flathead Valley's First Indoor Axe Throwing Venue

Hank's Hatchets is an upbeat, urban indoor axe throwing venue. Family fun for ages 8+. Great for your bachelor(ette) party, birthday party, corporate team building, gender reveal, date night and more! BYO beer/wine/refreshments. Space for groups up to 70.

406-730-2556; 6078 US Hwy 93 S  
hankshatchets.com



## The Marina at Whitefish Lake



## Whitefish Lake Boat Rentals & Cruises

The Marina at Whitefish Lake is open to the public, offering a full fleet of watercraft rentals including pontoon boats, ski boats, personal watercraft, kayaks, and stand-up paddleboards. Also available are full-service gas, ice, snacks, boat slips, and private cruises on The Lodge's wooden boat, The Lady of the Lake!

406-863-4020; 1380 Wisconsin Avenue  
lodgeatwhitefishlake.com/marina



## Private Guided Outdoor Rock Climbing Adventures

Private outings which cater just to you and your party. If you can climb a ladder, you can get to the top of our easiest climbs. Our advanced climbs will challenge even the most seasoned climbers. Great family adventure. Excellent team building activity. We provide all gear and desired training. #1 rated outdoor activity in Whitefish and we have maintained a perfect safety record since our inception in 2008.

406-306-0005; rockclimbmontana.com

## Skydive Whitefish

Fall In Love With Skydiving  
1-866-680-JUMP; 12 Spokane Avenue  
skydivewhitefish.com

## Stumptown Ice Den

Hockey, Public Skating, Figure Skating  
406-863-2477; 715 Wisconsin Ave  
stumptowniceden.com

## Stumptown Vintage Photography

Old-Time Photo Studio  
406-730-8888; 118 Central Avenue  
stumptownvintagephoto.com

## Stumptown Historical Society and Whitefish Museum

Preserving the history of Whitefish and the Flathead Valley  
406-862-0067; 500 Depot Street  
stumptownhistoricalsociety.org

## The Whitefish Trail

Multi-use, Natural Surface, Singletrack  
Recreational Trail Network  
406-862-3880; whitefishlegacy.org

## Whitefish Marine

Boat Dealer, Rentals, Snowmobile Rentals & Tours  
406-862-8594; 5960 US Hwy 93 S  
whitefishmarine.com





## 36 Hole Golf Complex, All Services

Montana's most requested 36-hole golf complex. A true mountain course with fabulous mountain views, large bentgrass greens and five different tee areas allow for golfers of varying ability and mindsets. The on-site Whitefish Lake Restaurant offers the finest dining in the valley.

**406-862-5960; 1200 Hwy 93 W.**  
[golfwhitefish.com](http://golfwhitefish.com)

## Whitefish Ski Heritage Museum

*Documenting the early history of skiing in the Flathead Valley; 406-885-2730; 705 Wisconsin Ave.*  
[fvsef.org/ski-museum](http://fvsef.org/ski-museum)



## Whitefish Mountain Resort Ski Resort and Summer Adventure

Only 15 minutes from downtown! Skiers and snowboarders enjoy over 300 inches of annual snowfall on 3,000 acres of glades, groomers, bowls, and steeps with runs for every ability level. In the summer, adventure awaits with Zip Line Tours, the Aerial Adventure Park, Alpine Slides, mountain biking, a Scenic Lift ride to Montana's only mountaintop restaurant, and more!

**406-862-2900; 1015 Glades Drive**  
[skiwhitefish.com](http://skiwhitefish.com)

## Whitefish Vertical Adventures

*Professional Guided Ice Climbing*  
208-413-1602  
[whitefishvertical.com](http://whitefishvertical.com)



## Whitefish Outfitters & Guides

### Year-Round Guided Experiences & Rentals

Adventure awaits! Guided summer and winter activities in Whitefish and surrounding areas. E-bikes, mountain biking, Going-to-the-Sun cycling, XC skiing, fat biking, snowshoeing, summer and winter equipment rental, retail shop. Beginners to pros, families to corporate retreats. Custom full and half day experiences. Call or stop by our store to book your experience!

**406-212-0080; 541 Spokane Avenue**  
[whitefishshuttle.com](http://whitefishshuttle.com)

## Winter Woods Dog Sled Tours

*Specializing in "Tours for Two"*  
406-862-7232 for Reservations

# OUTSIDE PERSPECTIVE IS ESSENTIAL

Western Montana's Glacier Country is a natural beauty where extraordinary experiences are found among stunning landscapes, charming small towns and the pure magic of Glacier National Park. Please travel and recreate responsibly.

**ORDER YOUR FREE TRAVEL GUIDE** [SafetyFirstMT.com](http://SafetyFirstMT.com) | [GlacierMT.com](http://GlacierMT.com) | [#GlacierMT](https://twitter.com/GlacierMT)





# A SPECIAL SOMETHING FOR EVERY ONE

**A STROLL DOWNTOWN** through the covered sidewalks of Central Avenue or through the historic Railway District reveals a broad variety of locally-owned shops and galleries. Discover fine artisan jewelry made with Montana-native gems or a new pair of hiking boots for the next adventure. Locally-roasted coffee beans, homemade skin care, hand-dyed yarn and huckleberry products make great gifts for those back home.

## TAKE IT HOME WITH YOU

- + Create pottery or glass artwork at Stumptown Art Studio
- + Shop for local literature at Bookworks including *Whitefish Review* literary journal
- + Shirts and hats with flair from Chill Clothing Company
- + Grab a new outfit at Harlow
- + Restock your fly box with Montana Fly Company flies at Lakestream Fly Shop
- + Look for *Made in Montana* or *Grown in Montana* products throughout town



Photo © Noah Couser, Downtown Whitefish

WHITEFISH'S LOW-KEY, FRIENDLY  
VIBE AND WALKABLE DOWNTOWN  
ARE DOWNRIGHT CHARMING.

~ SUNSET MAGAZINE





Photo © Explore Whitefish, Stumptown Art Studio



Photo © Explore Whitefish, Lakestream Fly Shop

Discover fine  
artisan jewelry  
made with  
Montana-  
native gems  
or a new pair  
of hiking boots  
for the next  
adventure.



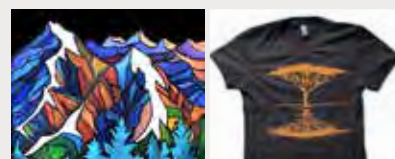
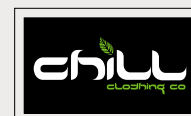
Photo © Explore Whitefish, Great Northern Cycle & Ski

## Bookworks

Independent Bookstore with Large Selection  
of Local History  
406-862-4980; 244 Spokane Ave

## Crystal Winters

Huckleberry Products, T-shirts, Souvenirs,  
Hats, Fun cards; 406-862-6104  
232 Central Ave; crystalwinters.com



## Chill Clothing Co.

Fine Apparel, Accessories, and Art

Chill is a clothing boutique featuring our  
original graphic designs, fine apparel,  
accessories and art. Our vibe is inspired  
by our mountain and ocean lifestyle. We  
surf, ski, snowboard, skate and love.

406-730-177; 415 Second Street E.  
chillclothingcompany.com



## Glacier Cyclery & Nordic Bike & Nordic Headquarters Since 1982

Northwest Montana's cycling and Nordic  
ski headquarters! For 39 years we've been  
helping folks prepare for adventures. Full  
service bike repair department, bike sales  
and rentals, shipping/assembly services,  
cycling apparel and souvenirs. In winter we  
offer Nordic ski sales, tunes and rentals.  
Stop by for trail info and friendly service!

406-862-6446; 326 Second St. E  
glaciercyclery.com



# SHOPPING

## Great Northern Cycle & Ski and The Daily Habit Coffee Bar

Skis, Bikes, Service, Good Coffee; 406-862-5321  
328 Central Avenue; gncycleski.com

## Grouse Nest Gift Shop

Regional and Glacier Souvenirs and Clothing  
406-862-3000; 2 Fairway Drive  
grousemountainlodge.com

## Harlow

A Feisty & Fun Boutique for Women  
406-730-1523; 100 Central Avenue, Ste 101  
lowandlette.com

## Imagination Station

Toys that Open the Imagination; montanatoys.com  
221 Central Ave, Whitefish (406-862-5668) or  
132 Main St, Kalispell (406-755-5668)

## Lakestream Fly Shop

Guided Trips and Full Service Fly Shop  
406-862-1298; 669 Spokane Avenue  
lakestream.com

## Markus Foods

Specialty Grocery, Beer, Wine, Pig & Olive Deli  
406-862-7258; 9 Baker Avenue

## Nelson's Ace Hardware

Your Helpful Hometown Hardware Store  
406-862-3573; 6490 Hwy 93 S  
acehardware.com/store-details/07568

## Notice Custom Snowboards & Wakesurfers

Handmade Custom Snowboards and Wakesurfers  
406-730-1357; noticesnowboards.com

## Polka Dot Sheep Fine Yarns

Home of Polka Dot Sheep Yarns and Publications  
406-862-6390; 14 Lupfer Avenue  
polkadotsheep.com

## Sage & Cedar

Pure, Natural, Organic Skin & Bath Care  
406-862-9411; 214 Central Ave  
sageandcedar.com

## Sappari Design

Contemporary Clothing, Jewelry, Eclectic  
Home Decor, and Furniture Finds  
406-862-6848; 215 Central Ave  
sapparimontana.com



## Snow Ghost Outfitters

On-mountain ski/bike, summer and winter equipment and apparel. Snow Ghost Outfitters can gear you up from head to toe— from helmets and goggles to jackets and gloves in winter and hiking poles, souvenir t-shirts and more in summer. Stop by Village Rentals for skis, boots, and bindings in winter and mountain bike equipment in summer.

406-862-1996; 3893 Big Mtn Rd, C2  
skiwhitefish.com



## Backcountry to Backyard Unlimited Adventure

A world of outdoor and athletic resources for all seasons, reflecting the recreational opportunities of Northwest Montana. Hiking camping, hunting, fishing, bikes, kayaks, SUPs, ski and snowboard, athletics, sports, technical, lifestyle and resort clothing and footwear. Winter and summer rentals plus full-service shop. Locally owned since 1968.

406-862-3111; In the Mountain Mall,  
6475 Highway 93 South  
sportsmanskihaus.com

## Sprouts

A Children's Boutique  
406-862-7821; 216 Central Avenue  
sproutswhitefish.com

## Tailwaggers

Quality Pet Supplies & Dog Wash  
406-862-8988; 325 Central Avenue, Unit A  
tailwaggerspet.com

## Tate Interiors

Boutique Interior Design Firm & Showroom  
406-862-5777; 305 2nd St. E.  
tateinteriors.com

## THE MERCANTILE AT THE LODGE



## Western-Inspired Apparel, Jewelry & Home Furnishings

The Mercantile at The Lodge is a fashion-forward boutique shop inspired by the West - adventurous, independent, and unique. Items thoughtfully selected for quality include home furnishings, jewelry ranging from buffalo nickel to high-end turquoise, trending clothing and footwear for men and women, Whitefish keepsakes, and more!

406-863-4000; 1380 Wisconsin Avenue  
lodgeatwhitefishlake.com/mercantile

## The Toggery

Outdoor Clothing, Footwear, Gear & Accessories  
406-862-2271; 122 Central Ave  
toggerymontana.com

## Treasure Outpost Co.

Crystals, Fossils, Jewelry, Butterflies, Art Supplies  
406-890-3790; 16 Baker Avenue  
whitefishrockshop.com

## Trovare

Gourmet cookware, ingredients and cooking classes  
406-730-8515; 317 Central Avenue #102  
trovaremt.com

## The Village Shop

Women's & Men's Boutique Clothing Store  
406-862-3200; 201 Central Avenue  
villageshopwhitefish.com

## Whitefish Liquor Store

Fine Wines and Spirits  
406-862-4470; 239 Baker Avenue  
whitefishliquor.com





## Third Street Market Natural and Organic Health Food Store

Third Street Market is the oldest local health, wellness and grocery store in Whitefish. For over 30 years, we have provided our community with local organic produce, eggs, dairy and meats; as well as a wide variety of vitamins and supplements. We support local farmers, ranchers and "Made in Montana" products and kombucha on tap! Now offering specialty beverages that include natural, sustainable, biodynamic/organic and bee-friendly wine options alongside craft and local brews. Come check out our rotating and seasonal sections!

**406-862-5054; 244 Spokane Ave**  
**thirdstreetmarket.com**



## Whitefish Quilts and Gifts Quilting Products and Huckleberry Goodies

We're a cozy quilt shop and your first and last stop for the best in Locally Made Gifts and Goodies! Browse our wide selection of fabric and patterns for your next project including our exclusive huckleberry-print fabric. Don't forget to grab a few mouth-watering huckleberry treats and browse our locally-made pottery and other gifts.

**406-730-2207; 131 Central Ave**  
**whitefishquilts.com**



Photo © Noah Couser, Downtown Whitefish



Photo © Brian Schott, Downtown Whitefish



# YOUR PATH TO WELLNESS

## THE ACTIVE COMMUNITY

of Whitefish contains numerous establishments to nourish the body and mind. A variety of exercise facilities, yoga and Pilates studios, massage therapy, day spas and other holistic treatment centers are widely available. While primary and emergency care is state-of-the-art in Whitefish, both medical facilities also offer a full patient-centered wellness experience that give patients a quiet and soothing atmosphere and top-notch services that contribute to the healing process.



I CAN'T EVEN BEGIN TO EXPLAIN HOW MUCH I LOVE PILATES. NOT ONLY DO I BELIEVE IT'S GOING TO MAKE A DIFFERENCE IN MY SKIING, BUT IT HAS CHANGED MY RESPECT FOR MY MIND AND BODY.

~ MAGGIE VOISIN, WHITEFISH NATIVE, US OLYMPIC FREESKIER, X-GAMES GOLD MEDALIST; SPEAKING ABOUT DELIA PILATES



BEING FIT AND WELL IS MUCH MORE THAN JUST PHYSICAL EXERCISE, IT IS A LIFESTYLE IN WHICH YOU ARE AWARE OF YOUR CHOICES.

~ ART KRUEGER, WHITEFISH WAVE DIRECTOR

## DELIA PILATES

WHITEFISH



### Pilates and Wellness Boutique

Get world-class Pilates instruction in the heart of downtown Whitefish. Delia Pilates is a mindful movement studio offering highly customized private sessions, group reformer, and mat Pilates classes with a modern approach. Shop our curated boutique of wellness products and elegant apparel. With small classes and strong focus on form, you will get the most out of your wellness experience.

406-862-6488; 505 Railway Street  
deliapilates.com

## NORTH VALLEY HOSPITAL

A different kind of hospital. A different kind of care.



### Person-Centered Care in a Healing Environment

North Valley Hospital is a nonprofit Critical Access Hospital located in Whitefish, Montana with 24-hour emergency care including imaging and lab services. Serving residents and visitors alike, North Valley Hospital manages two seasonal urgent care clinics located in West Glacier (summer) and at Whitefish Mountain Resort (winter).

406-863-3500; 1600 Hospital Way  
nvhosp.org



Photo © Kristen Binder, Shanti Yoga Studio

## shanti yoga studio



### Spreading Peace, Health & Greater Levels of Self-Awareness Through Yoga

Teaching yoga and the yogic lifestyle to the Whitefish community since 2006, we design in-studio & on-site private and semi-private classes and retreats based on your goals. Public classes are taught live stream via Zoom. We offer life coaching programs for couples, teens, individuals and small businesses that weave in yogic teachings.

406.862.1885; 235 Central Avenue  
shantiyogamontana.com



Photo © Drew Silvers, SOBBACYLE

## WELLNESS ON THE GO

- + Visit Delia Pilates to improve your strength, flexibility, and posture.
- + Work up a sweat at SOBBACYLE
- + Explore one of the 14 trailheads of The Whitefish Trail
- + Walk, jog or pedal the pedestrian trails along the Whitefish River
- + Paddleboard on the Whitefish River



A hiker with a backpack is walking away from the camera on a dirt path that winds through a lush field of yellow wildflowers. The hiker is wearing a blue long-sleeved shirt, dark shorts, and a backpack. In the background, a massive, rugged mountain with a flat top rises above a dense forest of evergreen trees. The sky is overcast with soft, grey clouds. An orange horizontal bar is positioned above the text on the left side of the image.

Whitefish offers plenty  
of space to help  
find your inner zen.



## SOBBACYLE

**beat-based indoor cycling studios**

Featuring high-intensity cardio, muscle-sculpting intervals and rhythm-based choreography, SOBBACYLE gives you a quick, effective and fun workout. Standard classes are 45 minutes and open to all levels. To compliment the active lifestyle, our studio also has a boutique featuring Lululemon, Spiritual Gangster, PE Nation, Year of Ours, Splits59 and more!

**406-730-8744; 405 E. 1st Street**  
sobbacyle.com

**The Spa at Whitefish Lake****Resort Day Spa on Whitefish Lake**

The Spa at Whitefish Lake's professional therapists and aestheticians offer massage, facials, waxing, hand, and foot treatments. Indulge with all-natural products and a relaxation lounge stocked with therapeutic teas and tinctures! Premium retail from Naturopathica, Phytother, Coala, Sothys, and Beyond Yoga allows clients to continue their wellness regime at home.

**406-863-4050; 1380 Wisconsin Avenue**  
lodgeatwhitefishlake.com/spa

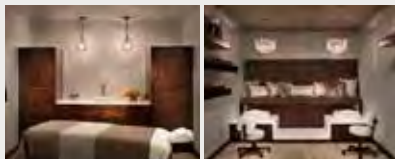
**Flathead's Premier Aquatic & Fitness Center****The Best Part of Your Everyday.**

Our friendly staff, clean facility, award winning design and world class equipment are just a few of the ways in which we are redefining the fitness experience.

**406-862-2444; 1250 Baker Avenue**  
whitefishwave.com

**THE FIREBRAND**

WHITEFISH · MONTANA

**Luxury Spa Services in Downtown Whitefish**

The Firebrand Spa offers an array of day spa services, including therapeutic massage, facials, waxing, and tinting. Personal services, as well as couple's treatments, are available. During the warm season, join our partners Yoga Hive Montana for weekly yoga classes on the Firebrand rooftop! Open to the public.

**406-863-1902; 650 East Third Street**  
firebrandhotel.com/spa

**WHITEFISH'S LEADING AQUATIC AND FITNESS FACILITY!**

#WHYIWAVE  
**406.862.2444**



**1250 Baker Avenue**  
**Whitefish, MT**  
whitefishwave.com





# WHERE THE ARTS COME TO LIFE

## ARTS AND CULTURE

are intensely vibrant in Whitefish. Professional Broadway actors headline theater performances and art galleries exhibit both local and national, well-known sculptors and painters. Monthly gallery nights, from May through October, encourage mingling and connecting with featured artists while local musicians provide the evening soundtrack.

Live music, theatre and readings are a mainstay, with regular performances by both national and local performers. Two theater companies produce high-quality plays and musicals, and the symphony brings classical music and chorale performances. The award-winning local literary journal hosts poetry and literature readings by renowned authors and emerging voices.





## DRIVEN BY A PASSION FOR THE THEATRE AND A DESIRE TO AFFECT THE QUALITY OF LIFE HERE.

~ OLYMPIA DUKAKIS, ACADEMY AWARD WINNING ACTRESS, SPEAKING ON ALPINE THEATRE PROJECT



Photo © Kathryn Hayes, Whitefish Theatre Company's production of Into The Woods



Photo © Matthew Wetzler, Alpine Theatre Project's production of OperaLesque



Artwork © Nancy Cawdrey, Nancy Cawdrey Gallery





## Alpine Theatre Project



### Professional theatre featuring actors from Broadway

Alpine Theatre Project presents world-class professional musicals, plays, and concerts featuring real Broadway and Hollywood actors, including Tony, Emmy, Golden Globe and Academy Award winners. Performances held at the Whitefish Performing Arts Center in Downtown Whitefish and other venues. It's real Broadway in the Rockies.

Photos © Brenda Ahearn

**406-862-7469; Box Office Hours:**  
Tue.-Sat. 12-5PM & 1 hr. Before Performance  
[atpwhitefish.org](http://atpwhitefish.org)

### Brian Schott Photography

Sports Action, Landscape, and Drone Aerial Photography; 406-261-6190  
[brianschott.com](http://brianschott.com)

### Chuck Haney Photography

Stock, Commercial, Editorial Photography  
Photo Workshops Available on Website  
406-862-0521; [chuckhaney.com](http://chuckhaney.com)

## GLACIER SYMPHONY

ORCHESTRA and CHORALE  
John Zoltek • Music Director and Conductor



### Experience the finest in symphonic and choral music throughout the year

- Masterworks Series from September to April ~ The finest in symphonic & chorale music.
- Symphony Night at Rebecca Farms, July ~ Outdoor symphony pops concert.
- Festival Amadeus, August ~ A week long classical music festival.

**406-407-7000; [glaciersymphony.org](http://glaciersymphony.org)**

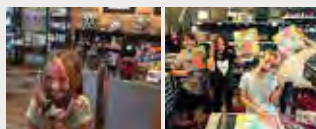
### Frame of Reference Fine Art

Fine Art Gallery and Custom Framing  
406-730-8855; 235 Central Avenue  
[FrameRef.com](http://FrameRef.com)

### Nancy Cawdrey Gallery

Fine Art Gallery  
406-730-8680; 206 Lupfer, #102  
[nancycawdrey.com](http://nancycawdrey.com)

## STUMPTOWN ART STUDIO



### Whitefish, Montana's Non-Profit Community Art Center

Walk in anytime to paint pottery, fuse glass or try our new embellishment station! Visit our website for a schedule of art classes, guest artist workshops and community art parties. Call to book the studio for your private events. Local artists are exhibited monthly in our art gallery. Open everyday!

**406-862-5929; 145 Central Avenue**  
[stumptownartstudio.org](http://stumptownartstudio.org)



## The Walking Man

frame shop & gallery



### Custom & Ready-Made Frames

The Walking Man Frame Shop & Gallery offers custom picture framing plus unique ready-made picture frames. Our gallery features contemporary regional artists representing a variety of mediums, including pastel, ceramic, acrylic, mixed media, oil, photography and steel/stone outdoor sculpture. Designers welcome. Find us on Facebook & Instagram!  
Open: MON-FRI 10AM-5PM

**406-863-2787; 305 Baker Avenue**  
[thewalkingmanframeshop.com](http://thewalkingmanframeshop.com)

### Sunti World Art Gallery

Fine Art From Around The Globe  
406-862-1084; 345 Spokane Avenue  
[sunteworldartgallery.com](http://sunteworldartgallery.com)

### Whitefish Review

Non-profit Journal of Art, Literature, and Photography; 406-261-6190  
[whitefishreview.org](http://whitefishreview.org)

## WHITEFISH POTTERY & STILLWATER GALLERY



### One-of-a-kind pottery

A full line of functional stoneware as well as one-of-a-kind pieces from potters across the Flathead Valley and Montana. Paintings, photography, jewelry, soaps, and gift items offered. The Stillwater Gallery, a premier ceramic gallery, also hosts monthly ceramic shows for Gallery Nights.

**406-862-1417, 406-862-8211**  
**240 Central Avenue**



### Community Theatre, Performing Arts Center

Whitefish Theatre Company is celebrating its 42nd anniversary season of bringing the performing arts to the Flathead Valley. WTC operates the 328-seat O'Shaughnessy Center in downtown Whitefish and presents a diverse season of theatre productions, music concerts, and special events.  
Box Office hours: MON-FRI 11:00AM-3:00PM

**406-862-5371; 1 Central Avenue**  
[whitefishtheatreco.org](http://whitefishtheatreco.org)





Photo © Brenda Ahearn, Alpine Theatre Project's production of Life

## WHITEFISH IS A SMALL TOWN IN A GOOD WAY.

~ CHADD SCOTT, FORBES.COM

## *Featuring World Class Art & Decor*



Sunti World Art Gallery

2 Floors | Original Fine Art | Live Artists | Café

Sunti World Art Gallery | 345 Spokane Avenue, Whitefish | (406) 862-1084 | [www.suntiworlartgallery.com](http://www.suntiworlartgallery.com)





# World's 1st Ski-in/Ski-out Luxury TREEHOUSE and CHALET Vacation Rentals

Located Slopeside at Whitefish Mountain Resort-Just 30 miles to Glacier National Park!



**One of TIME Magazine's 100  
World's Greatest Places**



**One of VRBO's 25  
All-Time Favorite Properties**

(selected from more than two million vacation rental properties!)



**One of COSMOPOLITAN's 30  
Sexiest Hotels in the World**



**One of US NEWS' World's 30  
Best Treehouse Hotels**



**One of ARCHITECTURAL DIGEST's  
20 Incredible Treehouses**

Each whimsical chalet or treehouse features: award-winning design • incredible views • private hot tub • gourmet kitchen • gas fireplace • WiFi • Sonos • white goose down comforters • luxury amenities • soaring turrets with fiber-optic stars or starry bedroom ceilings! Chalets have underground, heated reserved parking, a fitness center and ski locker room.

Each of the 3 treehouses and 7 chalets sleep from 6 to 10 guests, hosting up to 66 total.

EASY ON THE SLOPE Ski-in/Ski-out access... just seconds to Hope Slope, which also has great night skiing!

Private Concierge Services for activities, shipping skis / packages, child care, advance meal prep, online grocery shopping / delivery / stocking, massage therapist or private chef and more. Just let us know what you need as we're here to help you create your own 5-star experience.

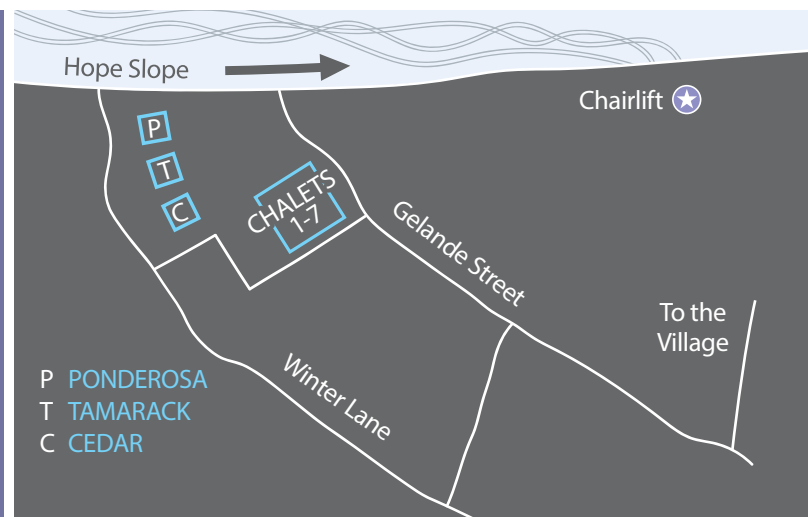
**For one-of-a-kind uniquely  
located luxury vacation rentals,  
hibernate with us.™**

SNOW BEAR CHALET'S®

3872 Winter Lane & 3868 Gelande St, Whitefish, MT

888-8MT-BEAR • 406-848-1771

info@snowbearchalets.com • snowbearchalets.com





**WHITEFISH STREETS ARE ALIVE WITH MUSIC, GALLERIES, LIVE THEATRE AND FESTIVALS.**  
**VISIT [EXPLOREWHITEFISH.COM/EVENTS](https://explorewhitefish.com/events) FOR FULL DETAILS OF EVENTS THROUGHOUT THE YEAR.**

## FEBRUARY 2021

- FEB 5-7** Whitefish Winter Carnival (Virtual)  
**FEB 6** Whitefish Whiteout at the Whitefish Mountain Resort  
**FEB 13** President's Weekend Slopestyle and Rail Jam at Whitefish Mountain Resort  
**FEB 26 & 27** Whitefish Theatre Company presents "The Lifespan of a Fact"  
**FEB 27** Glacier Nordic Club Full Moon Community Ski Night

## MARCH 2021

- MAR 2** Montana Special Olympics  
**MAR 17-18** Whitefish Theatre Company presents "Radiant Vermin"  
**MAR 20-21** Nate Chute Boardercross and Banked Slalom at Whitefish Mountain Resort  
**MAR 27** Corn Cup Slopestyle at Whitefish Mountain Resort  
**MAR 28** Glacier Nordic Club Full Moon Community Ski Night

## APRIL 2021

- APR 3** Dummy Derby & Spring Brewfest at Whitefish Mountain Resort  
**APR 10** Pond Skim at Whitefish Mountain Resort  
**APR 11** Closing Day at Whitefish Mountain Resort  
**APR 23-24** Whitefish Theatre Company presents "Our Mother's Brief Affair"  
**APR 24-25** Glacier Symphony presents Spring Festival

## MAY 2021

- MAY 6** First Thursday Gallery Art Walk  
**MAY 8-9** Whitefish Theatre Company Black Curtain Theatre "Things Being What They Are"  
**MAY 22** Whitefish Marathon, Half-Marathon, and 5K  
**MAY 25** Tuesday Downtown Farmers Market season begins  
**MAY 29** Whitefish Mountain Resort opens for Summer operations \*weekends only until June 12

## JUNE 2021

- JUN 3** First Thursday Gallery Art Walk  
**JUN 25-27** Whitefish Woody Weekend IX at the Lodge at Whitefish Lake  
**Ongoing** Tuesday Downtown Farmers Market

## JULY 2021

- JUL 1** First Thursday Gallery Art Walk  
**JUL 2-4** Whitefish Arts Festival  
**JUL 4** Fireworks at City Beach  
**JUL 17-18** Under the Big Sky Festival  
**Ongoing** Tuesday Downtown Farmers Market

## AUGUST 2021

- AUG 5** First Thursday Gallery Art Walk  
**AUG 13-15** Huckleberry Days Arts Festival  
**AUG 20** Whitefish Legacy Partners Hootenanny  
**AUG 21** Summer Brewfest at Depot Park  
**Ongoing** Tuesday Downtown Farmers Market

## SEPTEMBER 2021

- SEP 2** First Thursday Gallery Art Walk  
**SEP 16-18** Whitefish Songwriter Festival  
**SEP 23-25, 30** Great Northwest Oktoberfest  
**Ongoing** Tuesday Downtown Farmers Market  
**Ongoing** Whitefish Theatre Company Fall Productions Begin

## OCTOBER 2021

- OCT 1-2** Great Northwest Oktoberfest  
**OCT 2-3** Whitefish Trail Legacy Run  
**OCT 7** First Thursday Gallery Art Walk  
**OCT 23** Ladies Day Out

## NOVEMBER 2021

- NOV 25** Whitefish Turkey Trot  
**NOV 27** Small Business Saturday

## DECEMBER 2021

- DEC 8** Opening Day at Whitefish Mountain Resort \*tentative  
**DEC 10** Christmas Stroll - Downtown Whitefish  
**DEC** Glacier Symphony Holiday Concerts ([glaciersymphony.org](https://glaciersymphony.org) for dates)  
**DEC** Alpine Theater Project presents "Yuletide Affair 18" ([atpwhitefish.org](https://atpwhitefish.org) for dates)  
**DEC 24** Santa's Torchlight Parade & Gift Giving at Whitefish Mountain Resort  
**DEC 31** New Year's Eve Torchlight Parade and Fireworks at Whitefish Mountain Resort

\* Event dates are subject to change.  
 Visit [explorewhitefish.com](https://explorewhitefish.com) for updates.

Share your Whitefish adventure, tag photos with **#explorewhitefish**



**THE  
 CHARMING  
 TOWN OF  
 WHITEFISH,  
 MONTANA IS  
 EASY TO FALL  
 IN LOVE WITH.**

~ PRIYA VIN, [OUTSIDESUBURBIA.COM](https://outsidesuburbia.com)



# OH THE PLACES YOU'LL STAY

## RELAXATION WILL COME EASY

after a full day exploring Whitefish and its surroundings. A broad selection of unique lodges, inns, hotels, guest ranches, condos and vacation homes provide a variety of places to rest and relax. Whether in town, along Whitefish Lake, or on the mountain, lodging properties provide easy access to the vibrant downtown, outdoor recreation, restaurants, shopping and amenities.

The prices and conveniences range from the highest levels of comfort and service, to value “keep it simple” options. Every host desires to make guests feel comfortable with a friendly demeanor that is classic Whitefish style. Many properties are near a free S.N.O.W Bus stop, making it a breeze to access the ski slopes or shopping areas.



Photo © Noah Couser, The Lodge at Whitefish Lake





Photo © Trevon Baker Photography, The Treehouses at Snow Bear Chalets



Photo © Good Medicine Lodge



Photo © Pursuit, Grouse Mountain Lodge

## ITS GLITZ-FREE AND CHARM-FILLED TOWN MIXES THE AURAS OF BOHEMIAN WILD WEST AND PLUCKY SKI VILLAGE.

~ AMY TARA KOCH, THE WASHINGTON POST

### NIGHT LIGHTS

Keep your eye on the aurora forecast for the not-so-rare viewing of the Northern Lights—best viewed from City Beach shoreline along Whitefish Lake, when forecasted for the area. Or, watch for stargazing events in Glacier National Park, at the summit of Whitefish Mountain Resort or other locations throughout Flathead Valley. Whitefish also has a Dark Skies Ordinance. This keeps light pollution down and allows for great stargazing from within the city.

### BEST SPOTS TO CATCH THE SUNSET

- + Sipping a cocktail at The Tiki Bar at The Lodge at Whitefish Lake
- + Happy Hour at the Skybar at Casey's Pub
- + The Whitefish Trail's Scenic Overlook
- + Lounging at Whitefish City Beach

### FAST FACTS ABOUT WHITEFISH

- + Elevation of town: 3,033 feet
- + Elevation of Big Mountain summit: 6,817 feet
- + Number of marked ski runs on Whitefish Mountain Resort: 113
- + 3,000 skiable acres at Whitefish Mountain Resort
- + Average snowfall in town: 72 inches
- + Average snowfall on Big Mountain: 330 inches
- + Whitefish is 65 driving miles from the US / Canada border
- + Six peaks in Glacier National Park are higher than 10,000 feet
- + Whitefish Lake is 222 feet deep x 7 miles long x 2.5 miles wide
- + Nearby Flathead Lake is the largest natural freshwater lake west of the Mississippi River, 370 feet deep x 27 miles long x 15.5 miles wide



## ICON KEY

<b>\$\$\$</b> \$=VALUE PRICE \$\$=MIDDLE PRICE \$\$\$=DELUXE PRICE	UNIVERSAL ACCESS	WIFI AVAILABLE	RESTAURANT ON-SITE	COURTESY VAN	S*N*O*W* BUS STOPS NEARBY	LAUNDRY ON-SITE
DAILY MAID SERVICE	NON-SMOKING FACILITY	ROOM SERVICE	EVENING TURN-DOWN	PETS ALLOWED	EXERCISE FACILITY	HOT TUB
SWIMMING POOL	FIREPLACE	HISTORICAL AMBIANCE	RUSTIC AMBIANCE	AWARD-WINNING	MEETINGS AND CONFERENCES	GREAT FOR WEDDINGS
CONTINENTAL BREAKFAST INCLUDED	FULL BREAKFAST INCLUDED	GOURMET BREAKFAST INCLUDED	EVENING REFRESHMENTS INCLUDED			

### Bailey's Bed'n Bale

Whitefish's Most Unique Vacation Home



406-270-1603 • Rural Whitefish • montanabednbale.com

### Bar W Guest Ranch

4 Miles West of Whitefish



406-863-9099 • 2875 Highway 93 West • thebarw.com

### Best Western Rocky Mountain Lodge

Close to Downtown and Area Activities



406-862-2569 • 6510 Hwy 93 South • rockymtnlodge.com

### The Downtowner

Conveniently Located in Downtown Whitefish



406-862-2535 • 224 Spokane Avenue • downtowner406.com

### Duck Inn

Located Along the River and Close to Town



406-862-3825 • 1305 Columbia Avenue • duckinn.com



### The Farmhouse Inn & Kitchen

Close to Downtown and S.N.O.W. Bus



Modern farmhouse style bed and breakfast in the heart of downtown Whitefish. Luxurious guest suites with soaking tubs and hand made organic bath products. Farm to table style bakery and cafe with a European touch. From scratch full breakfast made with local farm fresh organic ingredients included with your stay.

406-730-2666 • 28 Lupfer Ave • thefarmhouseinnandkitchen.com

### Hampton Inn & Suites

Located 1 Mile South of Whitefish



406-730-8901 • 6340 Hwy. 93 South • hampton.com





### Five Star Rentals of Montana

Accommodations on the Mountain, Lakeside, and Downtown



Five Star accommodations for your whole family or group of friends, a spectacular lake home, cozy cabin on the mountain or downtown charm! All of our privately owned properties are fully furnished and equipped for a fabulous vacation. Special amenities include BBQ's, decks, docks, canoes, paddle boats, fishing boats, hot tubs, air-conditioning, steam rooms, designer furnishings and stellar views.

406-862-5994 or 877-523-5994 • 704 Baker Avenue • [fivestarrentals.com](http://fivestarrentals.com)



### Garden Wall Inn

One Block from Downtown Shops and Restaurants



"Known for superior service and attention to detail, this award-winning inn creates a sense of comfort and welcome beyond your expectations." Five luxurious guest rooms are furnished in period antiques. Full, gourmet breakfasts showcasing local products, prepared by our chef. Great downtown location is a short walk from shops and restaurants.

406-862-3440 or 888-530-1700 • 504 Spokane Ave. • [gardenwallinn.com](http://gardenwallinn.com)



### Good Medicine Lodge

Five Minute Drive to Downtown



Good Medicine Lodge provides seamless access to all activities during any season. Rustic and cozy, this modern lodge was designed with luxurious mountain living in mind. Breakfast is prepared fresh daily with local and organic ingredients (when possible) and is served with a great cup of coffee.

406-862-5488 • 537 Wisconsin Avenue • [goodmedicinelodge.com](http://goodmedicinelodge.com)



### Grouse Mountain Lodge

Steps from Downtown, Golf Course Views



Located steps from Downtown Whitefish, along the Whitefish Lake Golf Course, Grouse Mountain Lodge is a four-season destination offering modern accommodations, Montana hospitality and convenient amenities including a complimentary shuttle, on-site dining at Logan's, and more.

406-862-3000 • 2 Fairway Drive • [grousemountainlodge.com](http://grousemountainlodge.com)



### Hidden Moose Lodge

2 Minutes to Downtown, 5 Minutes to Skiing



Designed and built to reflect the rustic, rugged history that is Montana, but with all the amenities that make our guests feel right at home. From the river rock fireplace located in our Great Room to the outdoor hot tub and our hearty breakfasts, you will want to make the Hidden Moose your relaxing retreat during your visit to Whitefish.

888-733-6667 • 1735 East Lakeshore Drive • [hiddenmooselodge.com](http://hiddenmooselodge.com)





## Kandahar Lodge

Ski-in/out, 10 minutes to Whitefish



Enjoy Kandahar Lodge's crackling fireplace and vintage snug bar for a perfect spot to unwind after skiing and hiking. The Lodge features award winning cuisine and wine selection at Cafe Kandahar. Relax in the large outdoor jacuzzi, steam room, and fitness center. Continental breakfast is included in room rates.

**406-862-6098 • 3824 Big Mountain Road • [kandaharlodge.com](http://kandaharlodge.com)**



## Lakeshore Rentals

Quality Condos, Cabins & Vacation Homes



We offer a variety of lake and mountain vacation properties for your Summer or Winter getaway. Whether you're coming to experience downtown, play in the lake, ski the mountain, golf the greens, fish the river, or hike in Glacier National Park – Lakeshore Rentals can find you the perfect property!

**406-863-9337 • 1750 East Lakeshore Drive • [lakeshorerentals.us](http://lakeshorerentals.us)**

## Ptarmigan Village Rentals

The Last Best "Montana" Mountain Experience!!!



**800-552-3952 • 406-862-3594 • 3000 Big Mountain Rd • [ptarmiganvillage.com](http://ptarmiganvillage.com)**

## River Meadow Ranch

West Valley, 10 Minutes from Whitefish and Kalispell



**410-365-9587 • 3195 West Valley Drive • [rivermeadowranch.com](http://rivermeadowranch.com)**



## ROAM Beyond

Refined rustic accommodations minutes from downtown



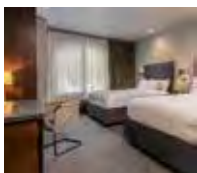
ROAM Beyond offers off-the-grid, lodging experiences with direct access to nature in rustic and natural destinations. Relax in your private sustainable cabin with comfortable amenities including cozy beds, cooking, refrigeration, private bathrooms, hot showers, solar and electric power, and on-site Guest Experience Manager. With nature at your doorstep and minutes from downtown, ROAM Beyond locations offer something for everyone!

**[roambeyond.travel](http://roambeyond.travel)**



## The Firebrand Hotel

Downtown corner of Spokane and Second



The Firebrand's bold and adventurous style reflects a blend of urban sophistication and Montana's rugged landscapes. Amenities to indulge today's traveler include a coffee bar, spa, and rooftop patio with hot tub. Ignite your senses at the Firebrand Restaurant, offering brunch, dinner, and a full bar with happy hour daily.

**406-863-1900 • 650 East Third Street • [firebrandhotel.com](http://firebrandhotel.com)**

## The Flat – Downtown Whitefish

Heart of Downtown Whitefish, Roomy, Big Views



**406-270-8771 • 418 2nd Street E. (Above Wasabi) • [thedowntownflat.com](http://thedowntownflat.com)**





### Snow Bear Chalets

Slopeside Ski-in/Ski-Out Luxury Chalets at Whitefish Mountain Resort



Seven brand new Chalets literally ON Hope Slope at Whitefish Mountain Resort. Mountain modern luxury, incredible views, private deck with hot tub, starry ceiling, gourmet kitchen, fireplace, WiFi, Sonos, down comforters, luxury amenities, fitness center, ski lockers and reserved underground parking. Two or three-bedroom chalets, sleep from 6-8 guests each.

**406-848-1771 or 888-8MT-BEAR • 3872 Winter Lane • snowbearchalets.com**



### Snow Bear Chalets – Treehouses

Slopeside Ski-in/Ski-Out Luxury Treehouses at Whitefish Mountain Resort



One of TIME Magazine's 100 WORLD'S GREATEST PLACES, and VRBO'S 25 ALL-TIME FAVORITE PROPERTIES! World's 1st Ski-in/Ski-out TREEHOUSES, slopeside at Whitefish Mountain Resort. Whimsical chalets feature award-winning design, incredible views, treetop private hot tub, soaring turret with fiber-optic stars, gourmet kitchen, gas fireplace, WiFi, Sonos, down comforters, and luxury amenities. Private, perfect for natural physical distancing.

**406-848-1771 or 888-8MT-BEAR • 3872 Winter Lane • snowbearchalets.com**

## KANDAHAR Lodge

on Whitefish Mountain Resort

Café Kandahar & Snug Bar on-site | Continental Breakfast  
Large Outdoor Jacuzzi | Steam Room | Fitness Center  
Free WiFi | Massage Studio | Crackling Fireplace in Lobby  
Ski-in/out | Heated Boot Room | Ski Storage

**KandaharLodge.com**



**Kandahar Lodge | 3824 Big Mountain Road | (800) 862-6094**





## The Lodge at Whitefish Lake

On the shore of Whitefish Lake



This award-winning resort is located between Whitefish Lake and the Viking Creek Preserve, minutes from downtown. Accommodation options include spacious suites and hotel rooms, fully-equipped condominiums, and luxurious homes. Event space, Boat Club Restaurant and Bar, Tiki Bar, Spa, indoor and outdoor pools and hot tubs, and marina are on-site.

**406-863-4000 • 1380 Wisconsin Avenue • [lodgeatwhitefishlake.com](http://lodgeatwhitefishlake.com)**



## The Pine Lodge on Whitefish River

Near Downtown on the Whitefish River



The Pine Lodge is conveniently located blocks from downtown, with balcony views of the meandering Whitefish River. The Pine Lodge offers many amenities, such as fire pits, indoor/outdoor swimming pool and hot tub, and complimentary kayak, paddle board and bike rentals. The Pine Lodge is both family and pet friendly!

**406-204-4519 • 920 Spokane Avenue • [thepinelodge.com](http://thepinelodge.com)**

## Whitefish Bike Retreat

Trailside Lodging & Camping on Whitefish Trail



**406-260-0274 • 855 Beaver Lake Road • [whitefishbikeretreat.com](http://whitefishbikeretreat.com)**



## TownePlace Suites by Marriott Whitefish

One Mile from Downtown Whitefish



TownePlace Suites Whitefish specialized in monthly and long term stays designed with personal touches, clever details with a calm, comfortable feel and productive setting. Enjoy the outdoor pool/hot tub, full kitchens, patio with Weber grills, or walk to downtown Whitefish for a wide variety of shops, eateries and spirits.

**406-890-2053 • 300 Akers Lane • [towneplacewhitefish.com](http://towneplacewhitefish.com)**

## Whitefish Downtown Suites

Luxury Condos & Vacation Rentals in Downtown



**406-890-9776 • 115 Central Avenue • [whitefishdowntownsuites.com](http://whitefishdowntownsuites.com)**



## Whitefish Mountain Resort Lodging

Ski-In, Ski-Out at Whitefish Mountain Resort



Whitefish Mountain Resort Lodging offers a variety of on-mountain accommodations to suit any budget and all tastes. Relax in luxurious mountain town homes, stay slopeside in ski-in/ski-out condominiums, or enjoy the ski-in location and free hot breakfast at our value hotel. Dining, entertainment, on-mountain action and the town of Whitefish are all at your fingertips when you stay with us.

**406-862-2900 • Whitefish Mountain Resort • [skiwhitefish.com/lodging](http://skiwhitefish.com/lodging)**





## PINE LODGE AMENITIES

Blocks from Downtown • Indoor & Outdoor Pool  
Outdoor Hot Tub • Pet Friendly • Complimentary Breakfast  
S.N.O.W. Bus Stop • Courtesy Shuttle • Guest Laundry  
Complimentary Bike, Paddleboard & Kayak Rentals

*Join us this winter for the White Glove Experience,  
extra amenities included with every guestroom!*



920 Spokane Avenue, Whitefish, MT 59937 | Phone: (406) 204-4519 | [ThePineLodge.com](http://ThePineLodge.com)



Photo © Visit Montana, Hidden Moose Lodge



# DELICIOUS DISHES, WINE PAIRINGS, AND MORE.







Photo © Noah Couser, Tupelo Grille

## A DINING AND DRINKING SCENE THAT FEELS LIKE A BIG CITY.

~ LESLIE KELLY, ZAGAT.COM

### AWARD-WINNING CUISINE,

world-class wine selections and great service—all reasons Whitefish exceeds dining expectations. Culinary discoveries abound, offering nearly every variety of style and fare. Many chefs pride themselves on the use of fresh, local and organic vegetables, fruits, and meats. Each dining experience is an opportunity to savor the local flavor. After a satisfying meal, mingle with the locals at one of the many bars and lounges that line downtown. Sip a pint of craft beer or enjoy a sunset cocktail. From acoustic guitar at a cozy bar to a full band or DJ to dance the night away, live music can be found almost every night of the week.

### DRINK THE SCENERY

Whitefish is home to a micro-brewery, a winery and a distillery. Spotted Bear Spirits makes use of seasonal organic produce to complement its house-made spirits, syrups and specialty Coffee Liqueur using cold brew coffee from Montana Coffee Traders. Bonsai Brewing Project focuses on small batch, specialty beers, using local ingredients and interesting techniques. IPAs, sours and barrel aged beers are some of their favorites. Unleashed: A Winery offers locally-crafted wines inspired by the flavors of our mountain town served up at their tasting room and gathering space in downtown Whitefish.



Photo © VisitMT, Loula's Cafe



Photo © Pursuit, Logan's Bar &amp; Grill

### FOODS FROM THE REGION

- + Flathead cherries are grown along the shores of Flathead Lake, where the lake-effect keeps temperatures a bit more moderate than other parts of the region. Berries ripen in July.
- + Wild huckleberries ripen throughout July and August from the valleys up to the mountain tops—a close cousin of the blueberry.
- + Edible mushrooms such as the morel, are found in nearby forests, and are abundant in spring and early summer.
- + Elk, bison, and various fish are all popular regional offerings.



# EAT & DRINK

## ICON KEY

\$\$\$ \$=\$5-15 AVG. ENTRÉE  
 \$\$=\$9-24  
 \$\$\$=\$15-39+

☎ RESERVATIONS  
 SUGGESTED

BLD B=BREAKFAST  
 L=LUNCH  
 D=DINNER

🍷 BEER & WINE

🍸 FULL BAR

🍽 CATERING  
 AVAILABLE

🔑 PRIVATE ROOM  
 AVAILABLE

📶 WIFI AVAILABLE

🏆 WINNING  
 WINE LIST

😊 CHILD FRIENDLY

🪑 OUTDOOR SEATING  
 AVAILABLE

📺 BAR SEATING  
 AVAILABLE

🚚 DELIVERY  
 AVAILABLE

🎵 LIVE MUSIC  
 OFTEN

### Abruzzo Italian Kitchen

*Authentic. Italian. Cuisine.*

\$\$ D ☎ 🍸 🍷 🏆 🔑 😊 🪑 📺

406-730-8767 • 115 Central Avenue • [abruzzoitaliankitchen.com](http://abruzzoitaliankitchen.com)

### Amazing Crepes

*Sweet and Savory Crepes, Espresso*

\$ BL 📶 🪑 😊

406-862-6002 • 123 Central Avenue • [amazingcrepes.com](http://amazingcrepes.com)

### Base Lodge Café, Bar and Coffee Bar at Whitefish Mountain Resort

*Fresh Food Options, Coffee and Full Bar*

\$ BL 🍸 🍽 📶 😊 🪑 📺

406-862-2900 • In The Base Lodge at Whitefish Mountain Resort • [skiwhitefish.com](http://skiwhitefish.com)



### Boat Club Restaurant

*Regional Specialties, Premium Steaks,  
 Fresh Seafood*



\$\$ \$\$\$ BLD ☎ 🍸 😊 🍽 🔑 📶 🎵 🪑 📺

Whitefish's only lakefront restaurant welcomes guests as family, featuring options to delight the senses and provide healthful nourishment. Breakfast and dinner served daily in the Dining Room, lunch and dinner in the Bar - a lively setting with live music 3-4 nights/week, and waterfront food and beverages at the seasonal Tiki Bar.

406-863-4040 • 1380 Wisconsin Avenue • [lodgeatwhitefishlake.com/eat-drink](http://lodgeatwhitefishlake.com/eat-drink)

### Bonsai Brewing Project

*Brewery, Kitchen, Public House, Beer Garden*

\$ LD 🍷 📶 🎵 🪑 😊 📺

406-730-1717 • 549 Wisconsin Avenue



### Cafe Kandahar

*Thoughtfully Constructed Cuisine*



\$\$\$ BD ☎ 🍸 🍽 🔑 🏆 📺

Serving thoughtfully constructed cuisine with an inspired approach to farm-to-table dining. Chef Andy Blanton was honored as one of the country's top culinary talents in the both editions of "Best Chefs America," in 2013 and 2014. Chef Blanton is a four-time James Beard Award Semifinalist for "Best Chef: Northwest Region (2010, 2011, 2013, 2014)." Wine Spectator Award of Excellence and Wine Enthusiast Award of Unique Distinction.

406-862-6247 • 3824 Big Mountain Road • [cafekandahar.com](http://cafekandahar.com)



### Casey's Whitefish

*American, Tapas, Specialty Cocktails,  
 Local Distilleries*



\$ LD 🍸 🍽 🔑 📶 🎵 🪑 😊 📺

Casey's blends beautiful architecture and design with exceptional hospitality and entertainment. Multiple levels and bars create a different atmosphere and experience on each floor. Enjoy the views from our rooftop SkyBar, and join us on the dance floor for live music and DJ's. If you are looking for a relaxing dinner or a night on the town, you will find it at Casey's.

406-862-8150 • 101 Central Avenue • [caseyswhitefish.com](http://caseyswhitefish.com)





### Ciao Mambo

Cozy Italian Cuisine



\$\$ D 🍷 🔑 🍷 🪑 🕒 🍷

The lights are low, the music is up, the wine is flowing, and the energy is buzzing. It's a perfect evening and a perfect setting for Italian food at Mambos. With creative twists on classic recipes there is something for everyone in the family. Our pasta dishes with rich, savory sauces and fresh ingredients, thin crust pizzas baked to perfection, and unmatched service will keep you coming back for more.

406-863-9600 • 234 E. 2nd Street • [ciaomambo.com](http://ciaomambo.com)



### Craggy Range Bar & Grill

Your Sports Bar Headquarters



\$\$ LD 🍸 🎵 🍷 🪑 🕒 🍷

Craggy Range boasts over 25 flat screens for the big game, pool table, a full service patio, live music and innovative gastropub fare. Try the signature Flaming Snowghost Bloody Mary or select from their extensive list of craft beers, wines and creative cocktails. Located in the heart of downtown Whitefish.

406-862-7550 • 10 Central Avenue • [thecraggyrange.com](http://thecraggyrange.com)

### Ed & Mully's at Whitefish Mountain Resort

Full Bar, Breakfast, Lunch, & Après Ski

\$ BLD 🍸 🍷 📺 🕒 🪑 🍷 🎵

406-862-2900 • In The Village at Whitefish Mountain Resort • [skiwhitefish.com](http://skiwhitefish.com)



### THE FIREBRAND

WHITEFISH-MONTANA

Firebrand Restaurant  
Cross-Culturally Inspired Cuisine,  
Craft Beverages



\$\$ \$\$\$ BLD 📞 🍸 🍷 🔑 📺 🎵 🕒 🪑 🍷

Ignite your senses in the Firebrand Restaurant's contemporary environment, serving breakfast, brunch, lunch (seasonally), and dinner with a full bar and live music on select evenings. The Coffee Bar offers specialty drinks and grab 'n go items. Experience the Whitefish downtown vibe with happy hour food and drink specials daily.

406-863-1919 • 650 East Third Street • [firebrandhotel.com/eat-drink](http://firebrandhotel.com/eat-drink)

### Fleur Bake Shop

Bakery, Breakfast, Espresso, Cakes, Breads

\$ BL 🍷 📺 🪑 🕒

406-730-8486 • 103 Central Avenue • [fleurbakeshop.com](http://fleurbakeshop.com)

### Folklore Coffee

Coffee. Pastries. People.

\$ BL 📺 🕒

406-730-1020 • 403 E. 2nd St, Ste 104 • [folklorecoffeemt.com](http://folklorecoffeemt.com)



### INDAH SUSHI

Fresh Fusion Sushi Eatery and Sake Bar



\$\$ LD 🍷 📞 🍷 📺 🍷 🪑 🕒 🍷

Whitefish's newest fresh fusion sushi experience. Utilizing local, seasonal, and sustainably sourced food. Lunch and dinner served daily starting at 11am, Monday - Saturday. Voted Whitefish's Best New Restaurant, INDAH SUSHI is not to be missed! Catering and food truck also available for private events.

406-730-6001 • 250 E. 2nd Street • [indahsushi.com](http://indahsushi.com)



# EAT & DRINK

## Jalisco Cantina

Fresh, Innovative Mexican Cuisine & Cocktails



406-730-2663 • 510 Wisconsin Avenue • [thejaliscocantina.com](http://thejaliscocantina.com)

## LATITUDE 48

bistro • red room lounge

### Latitude 48 & Red Room

Artful Fusion of Worldly Cuisine



Latitude 48 represents an artful fusion of traditional and contemporary trends, both through our worldly cuisine and our atmosphere. Throw in an international wine list with over 20 wines by the glass and you've got a dining experience destined to entertain your senses. Downstairs at the Red Room, you'll find a plush lounge where you can sit back and enjoy a signature martini, small plates, fire-roasted pizza, a glass of wine or craft beer.

406-863-2323 • 147 Central Avenue • [latitude48bistro.com](http://latitude48bistro.com)

## Last Chair Kitchen & Bar

Casual Creative Cuisine, Craft Beer & Wine



406-863-5455 • 1705 Wisconsin Avenue • [lastchairkitchenandbar.com](http://lastchairkitchenandbar.com)



GROUSE MOUNTAIN  
LODGE

## Logan's at Grouse Mountain Lodge

Classic Cuisine with Montana Flair



Located off the lobby of Grouse Mountain Lodge, Logan's offers classic cuisine with Montana flair. The dining room features a cozy, casual atmosphere with a towering stone fireplace and traditional Montana décor. During the summer months, patio seating is available overlooking the 18th hole of the Whitefish Lake Golf Course.

406-862-3000 • 2 Fairway Drive • [grousemountainlodge.com/logans](http://grousemountainlodge.com/logans)



## Loula's Cafe

Whitefish's Classic Bistro with  
Award-winning Pies



Located in the historical Masonic Temple, Loula's will win you over with hearty and flavorful meals. Breakfast favorites include Lemon Stuffed French Toast with Raspberry Sauce and Eggs Benedict with White Truffle Oil. A great list of regional wines complement a home-style dinner menu of Southern Fried Chicken, Meatloaf and Pot Pie. Don't leave without trying the award-winning Huckleberry Peach Pie!

406-862-5614 • 300 East 2nd Street, #1 • [whitefishrestaurant.com](http://whitefishrestaurant.com)



## MacKenzie River Pizza

Best Pie in the Big Sky



Offering an incredible array of delectable dishes, always flavorful, fresh and served up in heaping portions. The acclaimed gourmet pizzas are offered on a variety of crusts – original, thin and gluten-free. Other items include hearty sandwiches and wraps, fresh salads, pastas and the newest menu addition, scratch-made bowls. To complement the menu choices, select from a variety of local and regional craft brews and fine wines.

406-862-6601 • 9 Central Avenue • [mackenzieriverpizza.com](http://mackenzieriverpizza.com)

## Montana Coffee Traders – Downtown Location

Coffee & Pastries, Breakfast, Lunch & Gifts.

Online Ordering Available



406-862-7667 • 110 Central Avenue • [mctcafe.com](http://mctcafe.com)



**Montana Coffee Traders – Roastery Location***Coffee Beans, Drinks, Pastries and Gifts!***406-862-7628 • 5810 Hwy 93 S. • coffeetraders.com****Piggyback BBQ***BBQ Ribs, Sandwiches, Salads & Catering*

Serving up Texas-style brisket and sausage, Carolina pulled pork, St. Louis-style ribs, rotisserie smoked chicken and smoked turkey plus gourmet burgers, tacos and salads. Great beer and wine selection. Bring the whole family. Gluten-free and vegetarian options available. Catering available.

**406-863-9895 • 102 Wisconsin Avenue • piggybackbbq.com****Pescado Blanco***Gourmet Mountain Mexican***406-862-3290 • 235 1st Street • pescadoblancorestaurant.com****Spotted Bear Spirits***Enjoy Hand-Crafted Spirits, Fresh Cocktails & Bottle Sales***406-730-2436 • 503 Railway Street, Suite A • spottedbearsprits.com****Sunti World Art Gallery Café***Light Lunch in a Fine Art Gallery*

Surrounded by world class art from around the globe, enjoy a pastry or a delectable tea sandwich. Sip one of the finest Arabica coffees from the Far East or choose from a selection of herbal teas. The sophisticated space creates a tranquil yet invigorating ambiance that awakens the senses and ensures a memorable experience.

**406-862-1084 • 345 Spokane Avenue • suntiworldartgallery.com****Sweet Peaks Ice Cream***Handcrafted Mountain Made Ice Cream***406-862-4668 • 419 1/2 Third Street • sweetpeaksicecream.com****Swift Creek Cafe***A Soulful Expression of Family Crafts***406-862-9136 • 307 E. 2nd Street • swiftcreekcafe.com****The Farmhouse Inn & Kitchen***Farm to Table Bakery and Cafe*

Farm-to-table style organic bakery and cafe in the heart of downtown Whitefish. We prepare meals from scratch with real ingredients from local farms. Baked goods and Czech pastries are made with recipes that have been handed down in our family for generations. Micro roasted organic coffee and gifts.

**406-730-2666 • 28 Lupfer Ave • thefarmhouseinnandkitchen.com**



# EAT & DRINK

## The Summit House Restaurant & Bar at Whitefish Mountain Resort

Montana's Only Mountaintop Restaurant & Bar



406-862-2900 • In The Summit House at Whitefish Mountain Resort • [skiwhitefish.com](http://skiwhitefish.com)

## The Wich Haus

Creative, Locally-Sourced Sandwiches & Salads



406-730-2018 • 105 Wisconsin Avenue • [thewichhaus.com](http://thewichhaus.com)

## Tupelo Grille

Comfortable, Warm, Mountain-West Hospitality



406-862-6136 • 17 Central Avenue • [tupelogrille.com](http://tupelogrille.com)



## Unleashed: A Winery

Winery & Tasting Room



Unleashed is a full production winery, tasting room, and gathering space located in downtown Whitefish. We offer locally-crafted wines inspired by the flavors of our mountain town. Enjoy wine tastings, small bites, and a chic, comfortable environment. We offer an assortment of red, white, and flavor-infused wines.

406-730-8558 • 20 Spokane Avenue • [unleashedwinery.com](http://unleashedwinery.com)



## Wasabi Sushi Bar & Ginger Grill

Sushi and Grill Cuisine, Contemporary Flair



SUSHI, SUSHI, SUSHI and more! It's time to treat your palette to a delightful meal of Asian influenced fare. Wasabi is located in the heart of downtown Whitefish on Second Street, walking distance from all the shops. Menu tastes range from sushi and grilled food to vegetarian along with beer, wine and sake. Reservations recommended. Catering available! Open for dinner only 5PM - closing.

406-863-9283 • 419 Second Street East • [wasabimt.com](http://wasabimt.com)



## Whitefish Lake Restaurant

Steaks, Seafood, and House Specialties



The Flathead Valley's best food, service and dining experience. Sensational steaks, seafood and house specialties await you in our historic 80-year old log club-house. Enjoy our martini menu, non-smoking environment and our wine list praised by Wine Spectator Magazine. For a more casual dining experience, try the intimate Clubhouse or the Deck for summer views. Photos courtesy A. Yourartisan Photography

406-862-5285 • 1200 U.S. Hwy 93 North • [whitefishlakerestaurant.com](http://whitefishlakerestaurant.com)



## Wild Coffee Company

Coffee, Fresh Pressed Juice, Grab & Go  
Breakfast & Lunch, Pastries



Wild offers coffee, pastries and delicious breakfast and lunch items inspired by the mountains and this beautiful town that we call home. Our large open space will invite you inside to curb your cravings before your next big adventure. Enjoy our fresh pressed juices and a variety of snacks and provisions.

406-730-2833 • 309 Central Avenue • [wildcoffeecompanymt.com](http://wildcoffeecompanymt.com)





Photo © Elise Giordano, Last Chair Kitchen & Bar



Photo © Noah Couser, Casey's SkyBar



Photo © Noah Couser, The Boat Club Restaurant



Photo © Explore Whitefish, Bonsai Brewing Project



# NEED CASH?

FIND ATM LOCATION ON  
THE MAP ON PAGE 55.

## **Whitefish Credit Union**

Mortgages, Vehicle Loans, Online Checking  
Accounts; 406-862-3525  
300 Baker Ave; whitefishcu.com



## **First Interstate Bank** **Neighbors Helping Neighbors**

With more than 150 locations in Montana, Idaho, Wyoming, Washington, Oregon and South Dakota, First Interstate Bank is proud to be driven by strong values and a long-term vision. And we are dedicated to helping our communities reach their greatest potential—Answering the needs of residents and businesses with practical financial solutions.

**406-863-8888; 306 Spokane Avenue**  
**firstinterstate.com**



## **Glacier Bank** **Committed to Supporting Our Community**

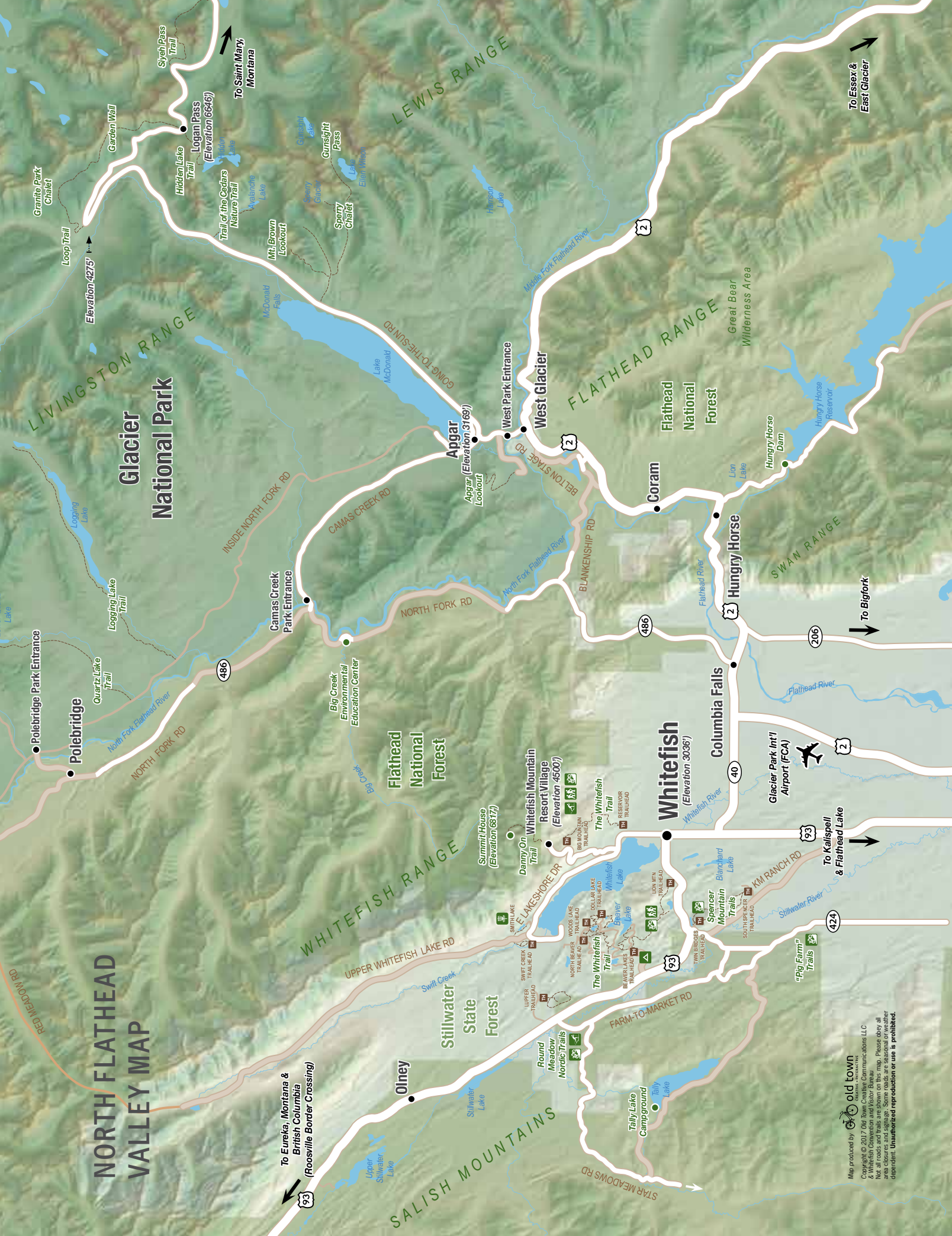
Glacier Bank is a strong community bank founded in the Flathead Valley. With access to 17 Divisions across eight states, convenience is right at your fingertips. We believe in first names, lasting relationships, and being there when you need us most. Stop in and see us today!

**406-863-6300; 319 East 2nd Street**  
**glacierbank.com**



Photo © Noah Couser, The Boat Club Restaurant





# NORTH FLATHEAD VALLEY MAP

## Glacier National Park

LEWIS RANGE

LIVINGSTON RANGE

FLATHEAD RANGE

SWAN RANGE

WHITEFISH RANGE

SALISH MOUNTAINS

Flathead National Forest

Flathead National Forest

Stillwater State Forest

Great Bear Wilderness Area

Map produced by old town

Copyright © 2017 Old Town Creative Communications LLC & Whitefish Convention and Visitor Bureau  
Not all roads and trails are shown on this map. Please obey all posted signs and regulations. No liability is assumed for any independent unauthorized reproduction or use is prohibited.



# GETTING HERE IS THE EASY PART.



Photo © Brian Schott, Whitefish Railway Depot



Photo © Brian Schott, The S.N.O.W. Bus

Whitefish is one of the closest mountain towns to a major airport. Direct flights from a number of cities into Glacier Park International Airport (FCA) make getting to Whitefish a breeze. Once you arrive at the airport, you're only 15 minutes from town.

The Amtrak Empire Builder arrives at the historic Whitefish Railway Depot from Chicago and Minneapolis to the east and Seattle and Portland to the west. Arriving by car is also easy with roads that meander through some of the most beautiful landscapes in America.

## **S.N.O.W. BUS**

During both winter and summer seasons, the S.N.O.W. Bus offers free transportation connecting the City of Whitefish and Whitefish Mountain Resort. The bus maintains stops at lodges, grocery stores, restaurants, Central Avenue and other locations throughout town. For the current schedule and ride map visit: [bigmtncommercial.org](http://bigmtncommercial.org).



**Amtrak**

Ride Amtrak Empire Builder® to Whitefish!  
1-800-USA-RAIL; 500 Depot Street  
amtrak.com

**Budget Rent a Car**

Compact to Full-Size Vehicles  
406-862-8170 or 800-248-7604  
803 Spokane Ave.; budget.com

**Dollar Rent-A-Car**

Vehicles and Vans of All Sizes.  
Delivery and pickup available.  
406-892-0009; 5506 Hwy 2 W  
dollar.com

**Glacier Park International Airport**

Gateway to Northwest Montana and the Canadian  
Rockies; 406-257-5994; 4170 Hwy 2 East  
iflyglacier.com

**S.N.O.W. Bus**

Free Shuttle Between Whitefish and Whitefish  
Mountain Resort  
bigmtnccommercial.org

**Whitefish Tours & Shuttle****Year-Round Glacier & Polebridge Tours**

Whitefish's local Tour & Shuttle Company!  
Providing private shuttles to Glacier National  
Park and tours up the North Fork to Polebridge.  
Custom half day and full day tours, distillery and  
brewery tours, airport and corporate charters,  
ski shuttles, guided cycling tours and shuttles,  
summer and winter equipment rental, retail shop.  
Call or stop by our store to book your experience!

**406-212-0080; 541 Spokane Avenue**  
**whitefishshuttle.com**

**DRIVING****DISTANCE & TIMES TO WHITEFISH**

Driving from	mi/km	time
Glacier National Park	25/40	30 min
Missoula, Montana	136/221	2.5 h
Spokane, Washington	252/409	4.5 h
Bozeman, Montana	342/556	5.5 h
Calgary, Alberta	286/457	5 h
Yellowstone Nat'l Park	403/655	7 h
Edmonton, Alberta	440/704	8 h
Seattle, Washington	530/861	8.5 h

**CUSTOMS & BORDER CROSSING**

US Customs: cbp.gov

Canada Border Services: cbsa.gc.ca

**★ AIRPORT CODE: FCA**

Glacier Park Int'l Airport, Kalispell  
Just 15 minutes from Whitefish

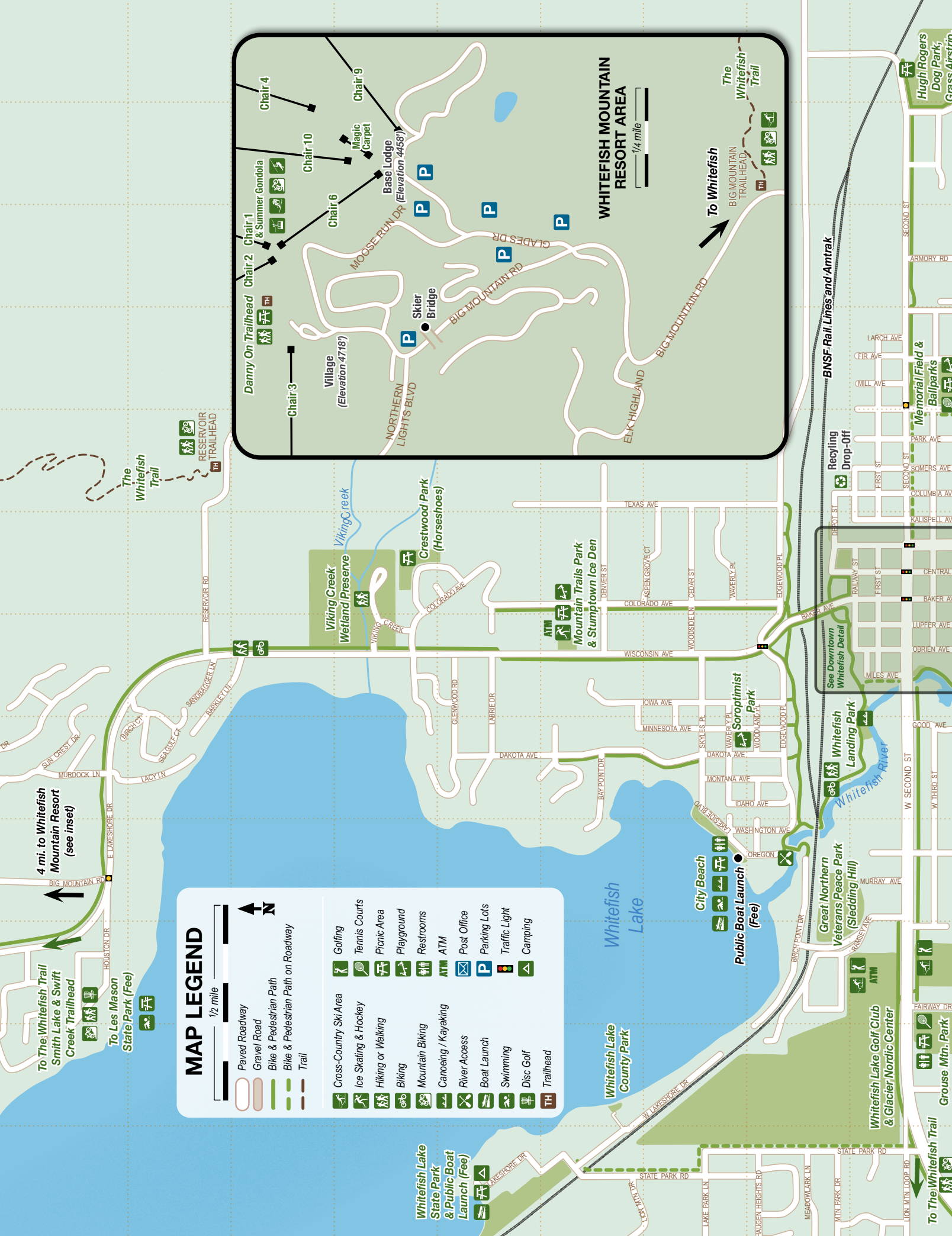
**— NON-STOP FLIGHT****- - SEASONAL NON-STOP FLIGHTS****||||| AMTRAK CODE: WFF**

Arrives at the historic Whitefish  
Train Depot

**TRAVEL RESOURCES**

24-Hour Road Conditions Available  
statewide: Call 511 or visit  
mdt.mt.gov/travinfo





### MAP LEGEND

Paved Roadway

Gravel Road

Bike & Pedestrian Path

Bike & Pedestrian Path on Roadway

Trail

Cross-Country Ski Area

Ice Skating & Hockey

Hiking or Walking

Biking

Mountain Biking

Canoeing / Kayaking

River Access

Boat Launch

Swimming

Disc Golf

Trailhead

Golfing

Tennis Courts

Picnic Area

Playground

Restrooms

ATM

Post Office

Parking Lots

Traffic Light

Camping

### WHITEFISH MOUNTAIN RESORT AREA

Chair 1 & Summer Gondola

Chair 2

Chair 3

Chair 4

Chair 6

Chair 9

Chair 10

Magic Carpet

Base Lodge (Elevation 4458')

Skier Bridge

Village (Elevation 4718')

MOOSE RUN DR

GLADES DR

BIG MOUNTAIN RD

ELK HIGHLAND

NORTHERN LIGHTS BLVD

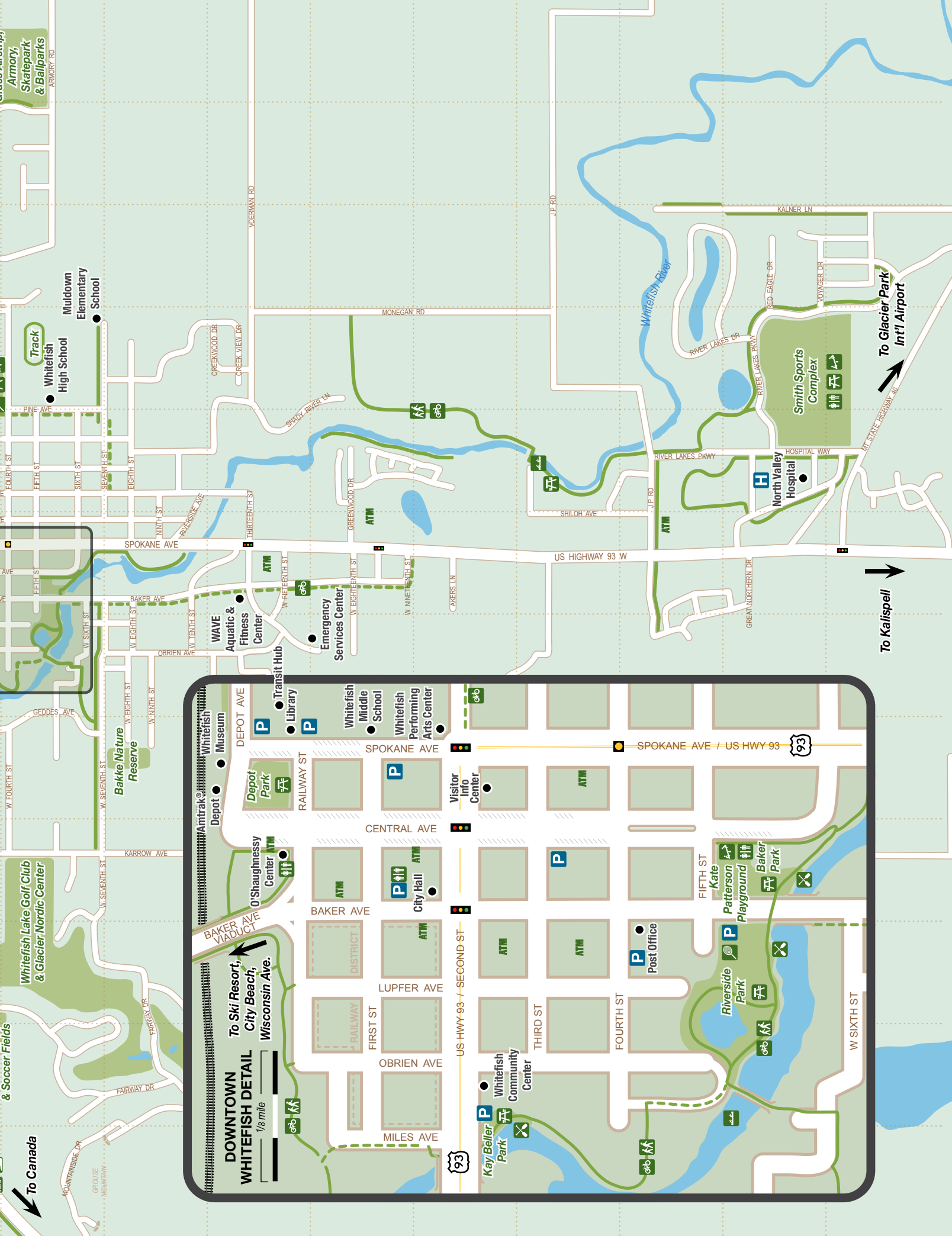
The Whitefish Trail

BIG MOUNTAIN TRAILHEAD

To Whitefish

1/4 mile



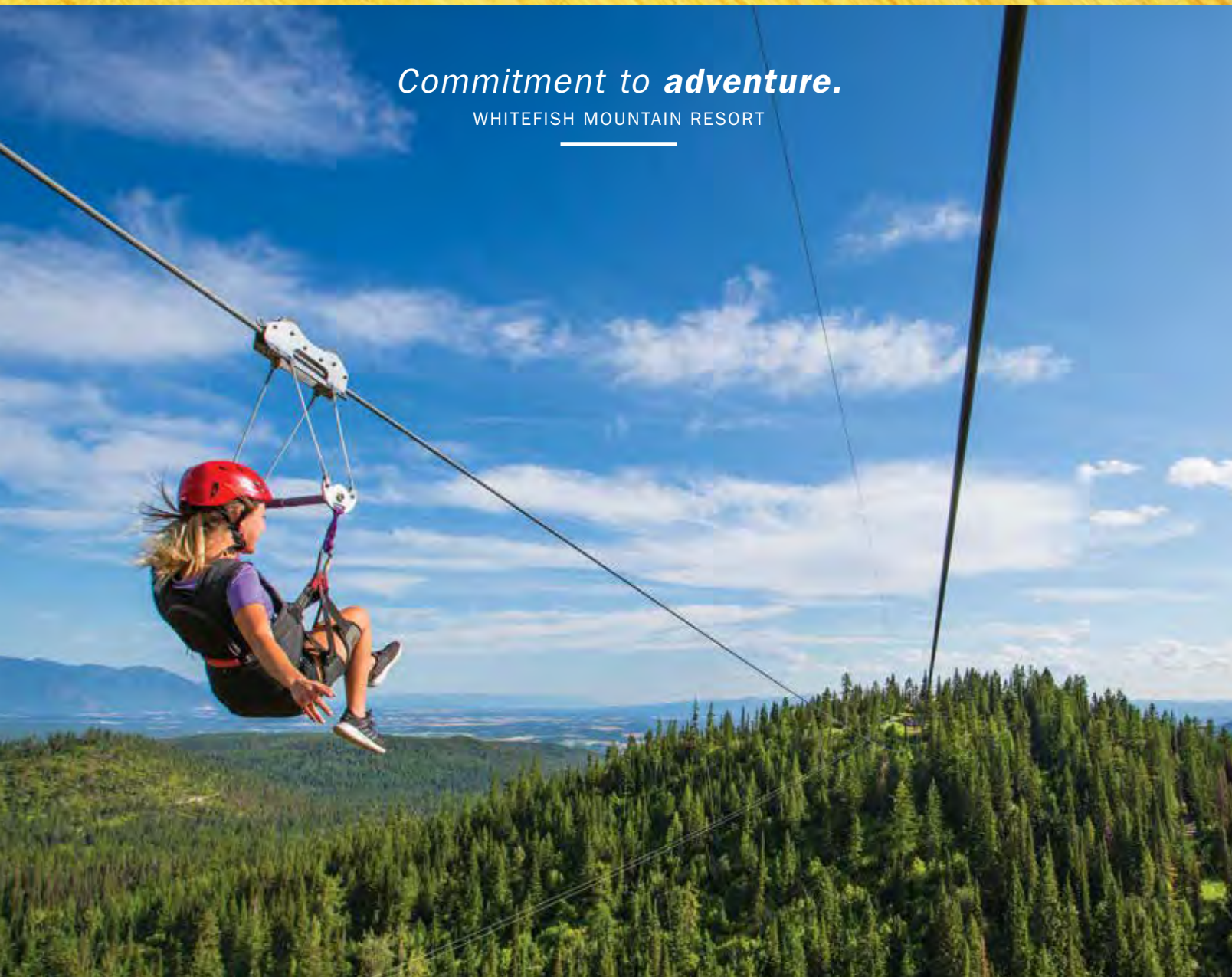




*Commitment to **adventure.***

WHITEFISH MOUNTAIN RESORT

---



*Commitment to **summer fun.***

Get outside at **Whitefish Mountain Resort** with **Zip Line Tours**, the **Aerial Adventure Park**, **Alpine Slides**, **mountain biking**, a **Scenic Lift** ride to Montana's only **mountaintop restaurant**, and more! Visit us online for lodging and activity packages.


---

**SKIWHITEFISH.COM | 877-SKI-FISH**



**WHITEFISH**  
**MOUNTAIN RESORT**

WHITEFISH, MONTANA

Partially Located on National Forest Lands  Photos © GlacierWorld.com

