



WHITEFISH
MONTANA

WHITEFISH

2016 GROUPS & MEETINGS PACKET
of the Whitefish Convention & Visitors Bureau



WHITEFISH IS A VIBRANT MOUNTAIN TOWN

located in the Northern Rocky Mountains of Montana, nestled at the edge of Glacier National Park. Each season offers breathtaking opportunity to experience the millions of acres of mountains, forests, lakes and rivers that surround town in every direction.

WHITEFISH

CONVENTION & VISITORS BUREAU

P.O. Box 4232, Whitefish, Montana 59937

For Groups Information Please Call:

1-406-862-3390



COVER PHOTO: © ChuckHaney.com **PHOTO THIS PAGE:** © iStock / abalconis

© 2015 Old Town Creative and the Whitefish Convention and Visitors Bureau. This publication was developed by Old Town Creative under agreement with the Whitefish Convention and Visitors Bureau. Each property and service described in this publication are independently owned and operated and are members of the Whitefish Convention and Visitors Bureau, a non-profit member organization. Please help support our members! Your comments and feedback are welcome. Please email us at info@oldtowncreative.com. Unauthorized reproduction or use of this publication in whole or part is not permitted.

WHITEFISH



VIEWS OF GLACIER NATIONAL PARK
FROM THE SUMMIT OF WHITEFISH
MOUNTAIN RESORT

© Brian Schott

Whitefish is only 25 miles from Glacier National Park, a World Heritage Site, Biosphere Reserve, and the world's first International Peace Park.

The beauty of these unspoiled mountains creates an international destination that attracts people from all over the world — most of them in July and August. If you can, try a visit during one of these great times of the year:

Fall Colors & Autumn Hiking: This is the bonus season of Whitefish when days are still warm and the Western Larch (also called Tamarack) turn a brilliant gold, interspersed with the deep green of the fir, pine and spruce, with golden aspen and cottonwood. This is the best time of year to enjoy biking, hiking and paddling in and around Whitefish.

Spring and Autumn On The Going-to-the-Sun Road: When the alpine sections of The Going-to-the-Sun Road are still under snow in the spring and fall, many miles are open to bikers and walkers looking to explore the secrets of Glacier National Park. It's open and full of life during these quieter seasons.

Whitefish Before Christmas: After Thanksgiving, we dress the downtown with lights and garland and host the early December "Christmas Stroll" with roasted chestnuts on the street corners, horse-drawn wagon rides, carols and holiday crafts.

Winter Carnival: Our early February celebration is one of the defining events of our mountain community. Deep in the heart of the Montana winter, we celebrate all things snow with parades, ski joring, and a good dose of mid-winter cheer.

Spring Skiing: Late March and early April are superior times to ski and snowboard at Whitefish Mountain Resort. The sun is often shining and the snow is still deep. Though in late spring, you may opt to try golfing at our 36-hole Whitefish Lake Golf Club instead.



GOLFING THE 36-HOLE
WHITEFISH LAKE GOLF CLUB

© ChuckHaney.com

GETTING HERE

Airport Code: FCA Kalispell, MT / Glacier Park (Just 15 minutes from Whitefish) **Amtrak Code: WFH** (Arrives in downtown Whitefish)

ACTUALLY, IT'S EASY TO GET HERE.

Whitefish is one of the closest mountain towns to a major airport. Once you arrive at Glacier Park International Airport from convenient hubs, you're only 15 minutes from town! Amtrak's® Empire Builder® arrives twice-daily at the historic Whitefish train depot. Arriving by car is also easy—with roads that wind through some of the most beautiful landscapes in North America.

DO I NEED A CAR?

While Whitefish is a pedestrian-friendly town, a rental car is a great idea to help you explore the secret stashes of Glacier National Park or discover less-traveled areas that surround Whitefish.

THE SNOW BUS

During winter season, the SNOW Bus offers free transportation to and from downtown and Whitefish Mountain Resort, with bus stops at lodges, the aquatic and fitness center, ice skating rink, movie theaters, restaurants, and the Central Avenue shopping district.

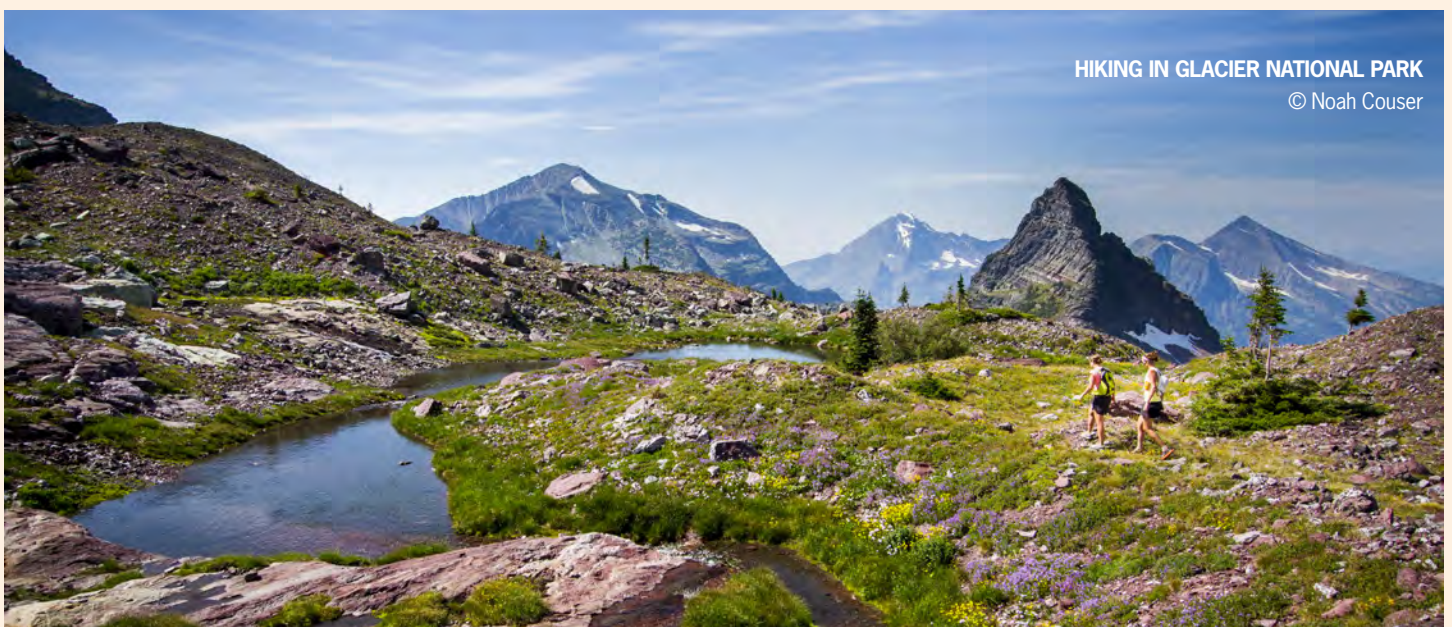


- > Close to Airport
- > Ride Amtrak
- > Beautiful Drive

Direct flights into Glacier Park International Airport (just 15 minutes down the road) from these major cities, make getting to Whitefish pretty easy.

DRIVING DISTANCES & TIMES TO WHITEFISH

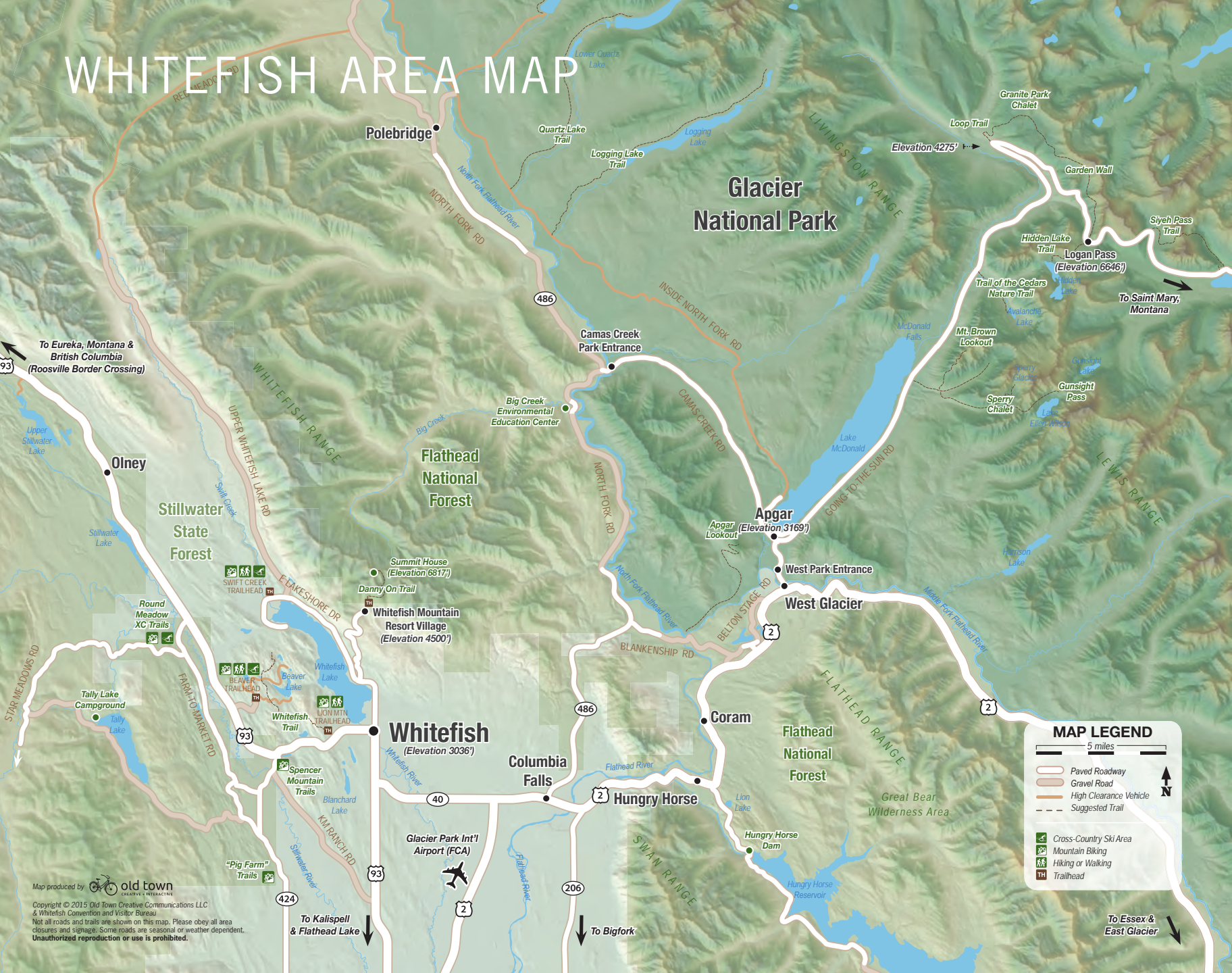
Driving From:	mi./km	Hours:Min.	Driving From:	mi./km	Hours:Min.
Glacier National Park	23/37	:30	Calgary, Alberta	286/457	5:00
Missoula, Montana	136/221	2:30	Yellowstone Nat'l Park	403/655	7:00
Spokane, Washington	252/409	4:30	Edmonton, Alberta	440/704	8:00
Bozeman, Montana	342/556	5:30	Seattle, Washington	530/861	8:30



HIKING IN GLACIER NATIONAL PARK

© Noah Couser

WHITEFISH AREA MAP



Glacier National Park

Flathead National Forest

Stillwater State Forest

Whitefish
(Elevation 3036')

Appgar
(Elevation 3169')

Columbia Falls

Hungry Horse

Flathead National Forest

To Eureka, Montana & British Columbia
(Roosville Border Crossing)

To Saint Mary, Montana

To Kalispell & Flathead Lake

To Bigfork

To Essex & East Glacier

MAP LEGEND

5 miles

- Paved Roadway
- Gravel Road
- High Clearance Vehicle
- Suggested Trail
- Cross-Country Ski Area
- Mountain Biking
- Hiking or Walking
- Trailhead

Map produced by **old town**
CREATIVE & INTERACTIVE
Copyright © 2015 Old Town Creative Communications LLC & Whitefish Convention and Visitor Bureau
Not all roads and trails are shown on this map. Please see all area closures and signage. Some roads are seasonal or weather dependent. Unauthorized reproduction or use is prohibited.

GROUPS & MEETINGS



WHITEFISH CREATES LASTING IMPRESSIONS

and earns rave reviews for meeting events, corporate retreats, family reunions, and weddings.

Of course, there are plenty of locations on the edge of another nondescript suburb that can host your next meeting or group event—but why spend time at an average venue? Whitefish offers several facilities that are ideal for group meetings offering a unique place to be inspired and productive and also have fun when the work is done. How about planning a board meeting on top of a mountain overlooking Glacier National Park? Or a sales event that culminates with a paddle on the lake?

With the distinctive community that Whitefish offers, groups can utilize multiple hotel

properties and meeting venues, giving attendees an unparalleled experience. Top-notch professional staff are on hand to help plan the perfect meeting, dinner or special event.

MAKING MEMORIES

There is no grander place for one of life's greatest moments than the lakes, peaks and meadows of Northwest Montana. A destination wedding in Whitefish will bring friends and family closer—in an environment that will inspire a lifetime together.

Multi-generation family trips and large family reunions will appreciate the diversity of activities for all ages, but the best part is enjoying time relaxing together in a landscape made famous by authors and filmmakers.

Whitefish boasts nearly 700 guest rooms with nearly 46,000 square feet of meeting space.



Photos this page courtesy Grouse Mountain Lodge, Brian Schott, Bar W Guest Ranch and Donnie Sexton

BAR W GUEST RANCH



BAR W GUEST RANCH
2875 Hwy. 93 W, Whitefish, MT 59937
thebarw.com

406-863-9099
info@thebarw.com

AVERAGE ROOM RATES*

Summer

\$1,065/person (dbl occupancy, 3-night)
\$200/night (dbl occupancy, bed/breakfast,
Saturdays only)

Winter, Spring, Fall

\$140/night (dbl occupancy, bed/breakfast)
\$1500/night up to 15 guests, lodge rental

NUMBER OF ROOMS

Guest Rooms 10

MEETING ROOMS

2 Rooms totaling 2,000 s.f.

TAX RATE

9% Tax

LAST RENOVATION

2010

ON-SITE ACTIVITIES

Summer: Horseback riding, hiking, skeet shooting, archery, fishing, mountain biking, wagon rides, cookout dinners, square dancing

Winter: Sleigh rides, sleigh ride dinners, snowshoeing, cross country skiing (minimal grooming)

ON-SITE DINING OPTIONS

All meals included with package, individual meals are available upon request.

LINKS TO VIDEOS

<https://www.youtube.com/watch?v=Jnqo3nlg4Qc>



* These are average room rates only. Please contact the property to get a detailed quote for your anticipated visitation dates. Additional fees and conditions may apply. Does not include holiday rates.

BEST WESTERN ROCKY MOUNTAIN LODGE



BEST WESTERN ROCKY MOUNTAIN LODGE
6510 US Hwy 93 S., Whitefish, MT 59937
rockymtnlodge.com

Mary Smith
406-862-2569, ext. 602
msmith3@delawarenorth.com



ON-SITE ACTIVITIES

Outdoor heated pool and hot tub, open year-round

ON-SITE DINING OPTIONS

Dining options within walking distance (half a block from hotel)

LINKS TO VIDEOS

<http://www.rockymtnlodge.com/meeting-facilities/>

AVERAGE ROOM RATES*

Summer

Hotel \$185

Winter

Hotel \$97

Spring/Fall

Hotel \$110

NUMBER OF ROOMS

Guest Rooms 79

MEETING ROOMS

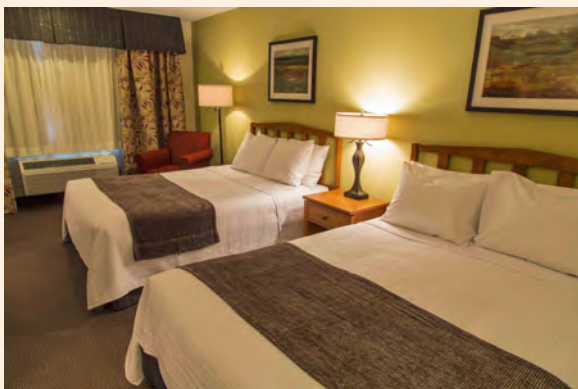
2 Rooms totaling 2,522 s.f.

TAX RATE

11% Tax

LAST RENOVATION

2013 – 2014



* These are average room rates only. Please contact the property to get a detailed quote for your anticipated visitation dates. Additional fees and conditions may apply. Does not include holiday rates.

GROUSE MOUNTAIN LODGE



Grouse Mountain Lodge

GROUSE MOUNTAIN LODGE
2 Fairway Drive, Whitefish, MT 59937
grousemountainlodge.com

Kelly Ortmeier
kortmeier@glacierparkinc.com
406-863-4701

AVERAGE ROOM RATES*

Summer

Hotel \$207

Winter

Hotel \$103

Spring/Fall

Hotel \$143

NUMBER OF ROOMS

Standard Rooms 42

Golf View Rooms 82

Suites 20

MEETING ROOMS

9 Rooms totaling 11,000 s.f.

TAX RATES

11% Tax

LAST RENOVATION

2012

ON-SITE ACTIVITIES

Golf, spa, massage, fitness center, wildlife watching, cross country skiing, soccer, tennis, indoor pool, bicycle rentals

ON-SITE DINING OPTIONS

Logan's Grill – breakfast, lunch, dinner

Outdoor dining with a beautiful view of the golf course

Wine Room - Private Dinners

LINKS TO VIDEOS

<http://www.grousemountainlodge.com/the-lodge/testimonials>



* These are average room rates only. Please contact the property to get a detailed quote for your anticipated visitation dates. Additional fees and conditions may apply. Does not include holiday rates.

KANDAHAR LODGE



KANDAHAR LODGE
3824 Big Mountain Rd, Whitefish, MT 59937
kandaharlodge.com

Jennifer Fisher
800-862-6094 406-862-6098
jennifer@kandaharlodge.com



ON-SITE ACTIVITIES

Outdoor hot tub, exercise room

Within walking distance: chairlift, zip lines, lift accessed mountain biking trails, hiking trail, skiing

ON-SITE DINING OPTIONS

Café Kandahar – upscale dinners only

Snug Bar – appetizers

Continental breakfast included in rates

LINKS TO VIDEOS

YouTube <https://www.youtube.com/watch?v=woTMBaXnnaw>

Kandahar website <http://www.kandaharlodge.com/groups/corporate-group-video.htm>



* These are average room rates only. Please contact the property to get a detailed quote for your anticipated visitation dates. Additional fees and conditions may apply. Does not include holiday rates.

AVERAGE ROOM RATES*

Summer

Hotel \$229

Winter

Hotel \$209

Spring/Fall

Hotel \$179

NUMBER OF ROOMS

Guest Rooms 50

MEETING ROOMS

2 Rooms totaling 1,100 s.f.

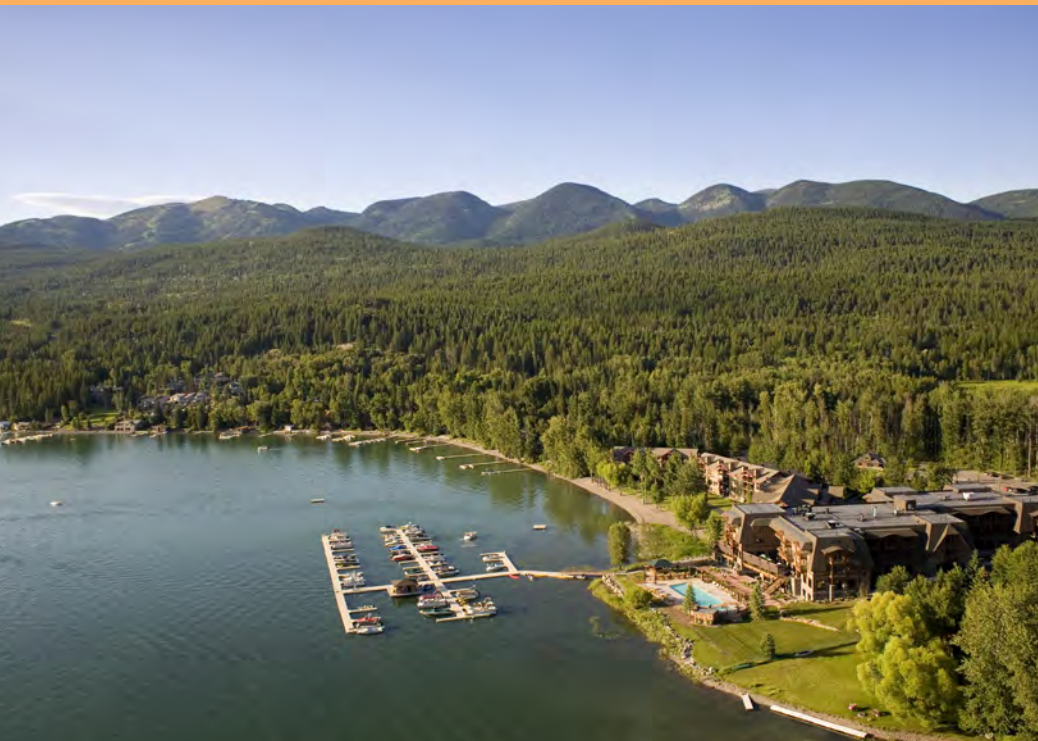
TAX RATE

11% Tax

LAST RENOVATION

2001 – Furnishings

THE LODGE AT WHITEFISH LAKE



THE LODGE AT WHITEFISH LAKE
1380 Wisconsin Ave., Whitefish, MT 59937
lodgeatwhitefishlake.com

877-887-4026 or 406-863-4000
sales@lodgeatwhitefishlake.com

AVERAGE ROOM RATES*

Summer

Hotel \$279; Suites \$364; 2-bed Condo \$522;
3-bed Condo \$638

Winter

Hotel \$125; Suites \$180; 2-bed Condo \$269;
3-bed Condo \$329

Spring / Fall

Hotel \$120; Suites \$180; 2-bed Condo \$269;
3-bed Condo \$329

NUMBER OF ROOMS

Hotel Rooms 52
Lodge Suites 65
Condominiums 27
Luxury Cabins 5

MEETING ROOMS

10 Rooms totaling 13,735 s.f.

TAX RATES

11% Tax

LAST RENOVATION

2014

ON-SITE ACTIVITIES

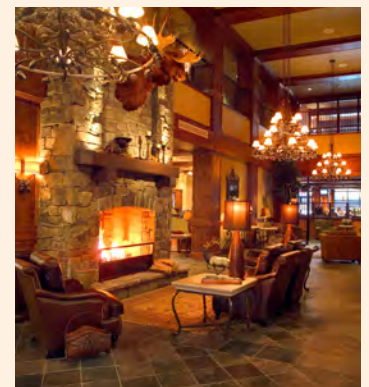
Full service day spa; full service marina with boat rentals including kayak, canoe, paddleboards, jet skis, ski/wakeboard boats, pontoon, and guided lake cruises; Viking Creek Wetland Preserve with interpretive nature trail; boutique shopping; Fellows Art Gallery; state of the art fitness center; indoor pool & hot tub, outdoor hot tub and seasonal outdoor pool.

ON-SITE DINING OPTIONS

Boat Club Restaurant & Lounge serving breakfast, lunch & dinner; Coffee Dock serving specialty coffees, teas and grab & go items; Tiki Bar & Grill serving lunch, dinner & cocktails mid-May thru mid-October; Full-service catering.

LINKS TO VIDEOS

<http://www.youtube.com/user/LodgeAtWhitefishLake>



** These are average room rates only. Please contact the property to get a detailed quote for your anticipated visitation dates. Additional fees and conditions may apply. Does not include holiday rates.*

THE PINE LODGE



THE PINE LODGE
920 Spokane Ave., Whitefish, MT 59937
thepinelodge.com

Mary Smith
406-862-2569, ext. 602
msmith3@delawarenorth.com



ON-SITE ACTIVITIES

Indoor/outdoor swimming pool with a swim jet, The Pine Lodge is on the S.N.O.W. bus route for easy access to Whitefish Mountain Resort, open year-round

ON-SITE DINING OPTIONS

Limited continental breakfast served daily



* These are average room rates only. Please contact the property to get a detailed quote for your anticipated visitation dates. Additional fees and conditions may apply. Does not include holiday rates.

AVERAGE ROOM RATES*

Summer

Hotel \$149–189

Winter

Hotel \$79–119

Spring / Fall

Hotel \$79–119

NUMBER OF ROOMS

Hotel Rooms 76

- 16 Standard 2-queen rooms
- 6 Standard king ADA rooms
- 9 Deluxe king rooms
- 13 Deluxe 2-queen rooms
- 8 Suites w/2-double beds & sleeper sofa
- 8 King mini suites w/king & sleeper sofa
- 9 1-bedroom suites
- 1 Executive suite

MEETING ROOMS

N/A

TAX RATES

11% Tax

LAST RENOVATION

2015, to be completed in 2016

WHITEFISH MOUNTAIN RESORT



WHITEFISH MOUNTAIN RESORT
Big Mountain Road, Whitefish, MT 59937
skiwhitefish.com

Sarah Nuckolls, *Meetings, Catering & Weddings*
406-862-1952 sarahn@skiwhitefish.com

Kelly Medler, *Eastern Region Lodging & Activities*
406-862-1917 kellym@skiwhitefish.com

Brant Giovannetti, *Western Region Lodging & Activities*
406-862-1983 brantg@skiwhitefish.com

AVERAGE ROOM RATES*

Summer

Hotel \$99; 1-bed Condo \$185; 2-bed Condo \$205; 3-bed Condo \$289

Winter

Hotel \$99; 1-bed Condo \$220; 2-bed Condo \$295; 3-bed Condo \$300

Spring/Fall

Hotel (closed); 1-bed Condo \$127; 2-bed Condo \$151; 3-bed Condo \$215

NUMBER OF ROOMS

Hotel Rooms 43

Condo Rooms 221

MEETING ROOMS

7 Rooms totaling 12,341 s.f.

TAX RATES

12% Tax

LAST RENOVATION

2014 – Base Lodge renovation

2015 – Summit House renovation

ON-SITE ACTIVITIES

In the winter, skiers and riders enjoy more than 300 inches of snow annually on 3,000 acres and 105 marked runs accessible by 14 chairlifts. When the snow melts, the resort becomes home to thrilling zip line tours, Montana's only alpine slide, an aerial adventure park, lift-accessed downhill and cross-country mountain biking, scenic lift rides, Spider Monkey Mountain and the unique Walk in the Treetops.

ON-SITE DINING OPTIONS

Base Lodge Cafe, Bierstube, Café Kandahar & Snug Bar, Ed & Mully's, Hellroaring Saloon, Summit House Restaurant & Bar, private catering

LINKS TO VIDEOS

Summer – <http://youtu.be/Gm9LT10HFBY>

Winter – <https://www.youtube.com/watch?v=NRMszJQ4IE4>



* These are average room rates only. Please contact the property to get a detailed quote for your anticipated visitation dates. Additional fees and conditions may apply. Does not include holiday rates.