

WHITEFISH
MONTANA

Wander.

EXPLORE**WHITEFISH**.COM

THANK YOU FOR YOUR INTEREST IN WHITEFISH

for your next group experience. Nestled at the edge of Whitefish Lake and serving as a basecamp for Glacier National Park in the Northern Rockies, Whitefish is the perfect destination for small to mid-sized meetings and group events, including family reunions and destination weddings. What truly makes Whitefish unique as a venue is the combination of breathtaking scenery, year-round recreational pursuits, and a vibrant town offering diverse accommodation options and unparalleled hospitality.

The Whitefish Group Travel Planner offers a great deal of information about our community. Contact information is included for top-notch professional staff who are on hand to help plan your perfect event.

I HOPE TO SEE YOU SOON IN WHITEFISH.

BEST WISHES,

Dan Hansen

Marketing & Sales Manager, Whitefish Convention and Visitors Bureau

WHITEFISH
CONVENTION & VISITORS BUREAU

P.O. Box 4232, Whitefish, Montana 59937
For Groups Information Please Call:
1-406-862-3390
info@explorewhitefish.com

WHITEFISH



VIEWS OF GLACIER NATIONAL PARK FROM THE SUMMIT
OF WHITEFISH MOUNTAIN RESORT
© Brian Schott

Whitefish is only 25 miles from Glacier National Park, a World Heritage Site, Biosphere Reserve, and the world’s first International Peace Park.

The beauty of these unspoiled mountains creates an international destination that attracts people from all over the world — most of them in July and August. To avoid the busy summer season, visit during one of these great times of the year:

Fall Colors & Autumn Hiking: This is the bonus season of Whitefish when days are still warm and the Western Larch (also called Tamarack) turn a brilliant gold, interspersed with the deep green of the fir, pine and spruce, with golden aspen and cottonwood. This is the best time of year to enjoy biking, hiking, and paddling in and around Whitefish.

Spring and Autumn On The Going-to-the-Sun Road: When the alpine sections of The Going-to-the-Sun Road are still under snow in the spring and fall, many miles are open to bikers and walkers looking to explore the secrets of Glacier National Park. It’s open and full of life during these quieter seasons.

Whitefish Before Christmas: After Thanksgiving, we dress the downtown with lights and garland and host the early December “Christmas Stroll” with food, games, carols, and holiday crafts.

Winter Carnival: Our early February celebration is one of the defining events of our mountain community. Deep in the heart of the Montana winter, we celebrate all things snow with parades, snow sculptures, ski joring, and a good dose of mid-winter cheer.

Spring Skiing: Late March and early April are superior times to ski and snowboard at Whitefish Mountain Resort. The sun is often shining and the snow is still deep. Though in late spring, you may opt to try golfing at our 36-hole Whitefish Lake Golf Club instead.



BIKING ALONG
THE WHITEFISH TRAIL
© Brian Schott

GETTING HERE

Airport Code: FCA Kalispell, MT / Glacier Park (Just 15 minutes from Whitefish) **Amtrak Code: WFH** (Arrives in downtown Whitefish)

ACTUALLY, IT'S EASY TO GET HERE.

Whitefish is one of the closest mountain towns to a major airport. Once you arrive at Glacier Park International Airport from convenient hubs, you're only 15 minutes from town! Amtrak's® Empire Builder® arrives twice-daily at the historic Whitefish train depot. Arriving by car is also easy — with roads that wind through some of the most beautiful landscapes in North America.

While Whitefish is a pedestrian-friendly town, a rental car is a great idea to help you explore the secret stashes of Glacier National Park or discover less-traveled areas that surround Whitefish.

THE SNOW BUS

During winter season, the SNOW Bus offers free transportation to and from downtown and Whitefish Mountain Resort, with bus stops at lodges, the aquatic and fitness center, ice skating rink, movie theaters, restaurants, and the Central Avenue shopping district.

LOCAL SHUTTLE SERVICE

Many of the local lodging properties offer shuttle service or can help arrange shuttles for your group. **Whitefish Tours & Shuttle** is also available for hire to transport groups to Whitefish Mountain Resort, Glacier National Park, and other destinations in and surrounding Whitefish.



Glacier Park International Airport (FCA) Only 15 min. from Downtown Whitefish

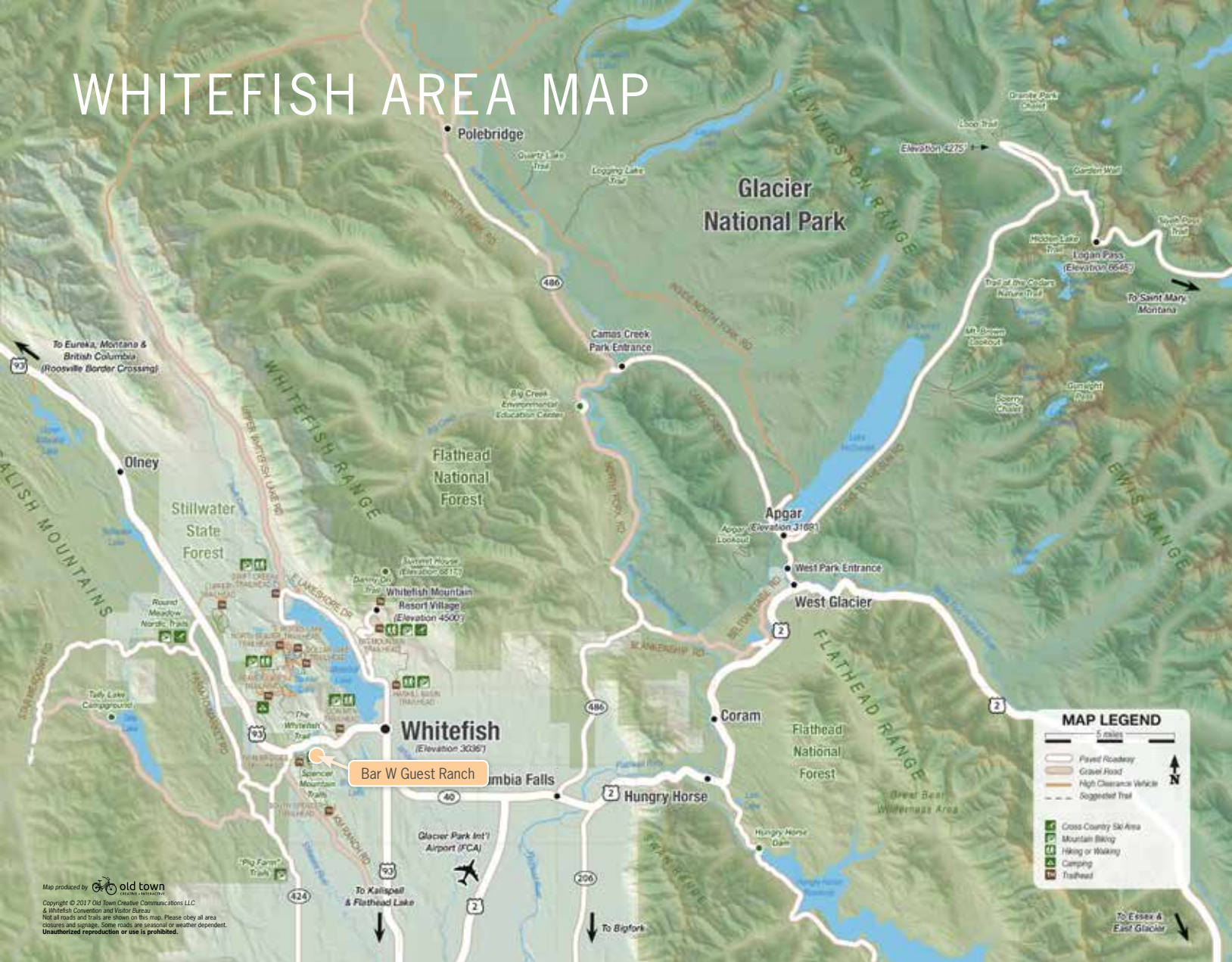
DRIVING DISTANCES & TIMES TO WHITEFISH

Driving From:	mi./km	Hours:Min.	Driving From:	mi./km	Hours:Min.
Glacier National Park	23/37	:30	Calgary, Alberta	286/457	5:00
Missoula, Montana	136/221	2:30	Yellowstone Nat'l Park	403/655	7:00
Spokane, Washington	252/409	4:30	Edmonton, Alberta	440/704	8:00
Bozeman, Montana	342/556	5:30	Seattle, Washington	530/861	8:30



CENTRAL AVENUE, WHITEFISH WITH VIEWS OF
WHITEFISH MOUNTAIN RESORT IN THE DISTANCE
© ChuckHaney.com

WHITEFISH AREA MAP

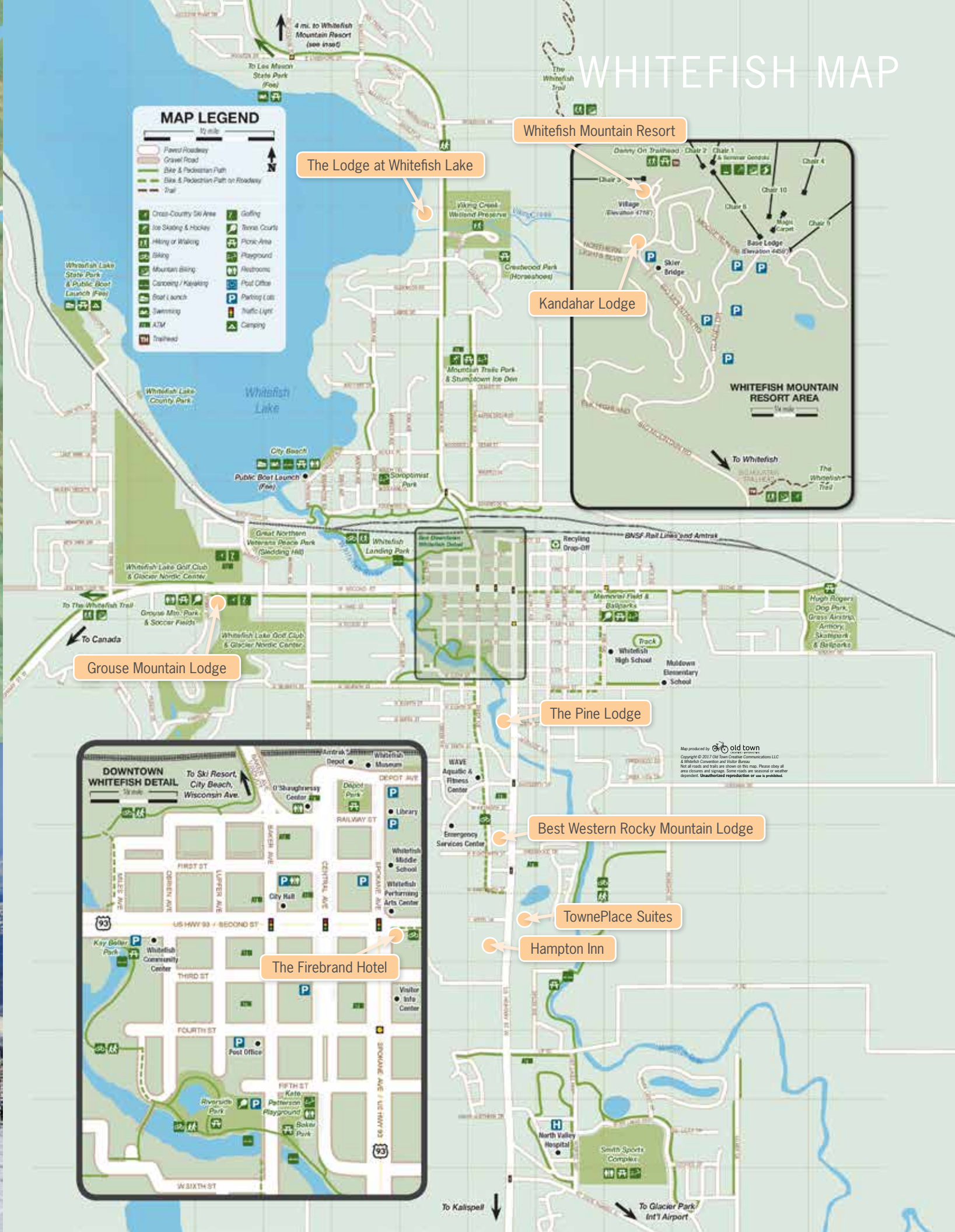


Map produced by old town creative communications
Copyright © 2017 Old Town Creative Communications LLC
& Whitefish Convention and Visitor Bureau
Not all roads and trails are shown on this map. Please obey all area
closures and signage. Some roads are seasonal or weather dependent.
Unauthorized reproduction or use is prohibited.



WHITEFISH MOUNTAIN RESORT
© Brian Schott

WHITEFISH MAP



Grouse Mountain Lodge

Whitefish Mountain Resort

Kandahar Lodge

The Pine Lodge

Best Western Rocky Mountain Lodge

TownePlace Suites

Hampton Inn

The Firebrand Hotel

Map produced by old town creative communications
Copyright © 2017 Old Town Creative Communications LLC
& Whitefish Convention and Visitor Bureau
Not all roads and trails are shown on this map. Please obey all area
closures and signage. Some roads are seasonal or weather dependent.
Unauthorized reproduction or use is prohibited.

EXPERIENCES



VIEWS OF GREAT NORTHERN MOUNTAIN
IN THE GREAT BEAR WILDERNESS AREA
FROM WHITEFISH MOUNTAIN RESORT
© Brian Schott



WHITEFISH LAKE GOLF COURSE
© Brian Schott

IT'S ALL IN THE DETAILS

From the perfect floral arrangement to getting attendees and guests to dinner on time, the details add the extra special touch to your event. Whitefish has you covered. Please contact us for assistance or additional requests.

TRANSPORTATION

- Amtrak
- Glacier Park International Airport
- Rocky Mountain Transportation
- Whitefish Tours and Shuttle

VENUE DECORATION

- Celebrate Party Rental

SPAS

- Back To Balance Massage
- Spa at Whitefish Lake
- The Firebrand Spa
- Whitefish Massage Therapy

OTHER MEETING LOCATIONS

- O'Shaughnessy Cultural Arts Center
- Whitefish Community Center
- Whitefish Performing Arts Center

Of course, there are plenty of locations on the edge of another nondescript suburb that can host your next meeting or event but why spend time in an average place at an average venue?

Whitefish offers several facilities that are ideal for group meetings offering a unique place to be inspired and productive and also have fun when the work is done. How about planning a board meeting on top of a mountain overlooking Glacier National Park? Or a sales event that culminates with a paddle on the lake?

**WHITEFISH BOASTS OVER 1,000
GUEST ROOMS WITH NEARLY 46,000
SQUARE FEET OF MEETING SPACE**

FINE DINING BY NIGHT

- Abruzzo Italian Kitchen – 110 people, *indoor*
Patio – 50 people, *outdoor*
- Boat Club – 90 people
- Cafe Kandahar – 75 people
- Ciao Mambo – 50 people
- Casey's Bar and Lounge – 180 people
- Craggy Range – 60 people *indoor*,
Patio – 70-90 people, *outdoor*
- Pescado Blanco – 80 people
- Summit House at Whitefish
Mountain Resort – 200 people
- Tupelo Grille – 100-130 people
- Wasabi Sushi – 30 people
- Whitefish Lake Restaurant – 100 people
- Wine Room at Logan's Bar – 30 people



CRAFT COCKTAILS AT SPOTTED BEAR SPIRITS
© Brian Schott

EXPERIENCES BY DAY

WINTER GROUP ACTIVITIES

- Skiing and snowboarding at Whitefish Mountain Resort
- Sleigh rides at the Bar W Guest Ranch
- Backcountry cat skiing for advanced skiers and riders
- Nordic Skiing at Glacier Nordic Center
- Snowshoe or cross country ski tours in Glacier National Park

SPRING, SUMMER & FALL GROUP ACTIVITIES

- Boat cruises on the Lady of the Lake at the Lodge at Whitefish Lake
- Aerial adventure park, alpine slides or scenic lift ride at Whitefish Mountain Resort
- Horseback riding and wagon rides followed by a cookout at Bar W Ranch
- Golfing at the Whitefish Lake Golf Club
- Hiking or mountain biking on the Whitefish Trail
- Rafting or flyfishing on the Flathead River
- Rock Climbing with Rock Climb Montana
- Kayaking or paddleboarding on Whitefish Lake

ANYTIME ACTIVITIES

- Brewery tour with Big Sky Brews Cruise
- Art gallery tours on Central Avenue
- "Made in Montana" craft industries tour
- Hidden Key Escape Games
- Private Group Yoga Sessions at YogaHive

MAKING MEMORIES



WEDDING CEREMONY ON THE SHORE OF WHITEFISH LAKE
Courtesy Lodge at Whitefish Lake

There is no grander place for one of life's greatest moments than the lakes, peaks, and meadows of Northwest Montana.

A destination wedding in Whitefish will bring friends and family closer — in an environment that will inspire a lifetime together. Multi-generation family trips and large family reunions will appreciate the diversity of activities for all ages, but the best part is enjoying time relaxing together in a landscape made famous by authors and filmmakers.



HORSE-DRAWN CARRIAGE
Courtesy Bar W Guest Ranch



CEREMONY & BANQUET Courtesy Lodge at Whitefish Lake

CEREMONY, BANQUET, AND RECEPTION SITES

Bar W Guest Ranch	Run of Ranch – 400 people, <i>indoor/outdoor</i>
Cypress Yard	The Salon – 30-40 people, <i>indoor</i> The Gallery – 80-98 people, <i>indoor</i> The Garden – 200 people, <i>outdoor</i>
Firebrand Hotel	Rooftop – 100 people, <i>ceremony & cocktail reception</i>
Grouse Mountain Lodge	Ballroom – 300 people, <i>indoor</i> Covered Pavilion – 300 people, <i>outdoor</i>
Kandahar Lodge	Lobby – 100 people seated, 125 people standing, buffet, <i>indoor</i> Portico – 100-125 people, <i>outside</i>
Lodge at Whitefish Lake	Regatta – 30-50 people, <i>indoor</i> Ballroom – 250 people, <i>indoor</i> Lakeside Pavilion – 120-200 people, <i>outdoor</i> Viking Lawn – 100-120 people, <i>outdoor</i> Condo Lawn – 200 people, <i>outdoor ceremony</i>
Whitefish Mountain Resort	Summit House – 200 people, <i>indoor/outdoor ceremony</i> Base Lodge – 200 people, <i>indoor/outdoor</i>



BAR W GUEST RANCH



BAR W GUEST RANCH
2875 Hwy. 93 W, Whitefish, MT 59937
thebarw.com

406-863-9099
info@thebarw.com

BEST WESTERN ROCKY MOUNTAIN LODGE



BEST WESTERN ROCKY MOUNTAIN LODGE
6510 US Hwy 93 S., Whitefish, MT 59937
rockymtnlodge.com

Mary Smith
406-862-2569, ext. 602
msmith3@delawarenorth.com



AVERAGE ROOM RATES*

Summer
\$1,375/person (3-night, dbl occupancy,
all inclusive (meals and activities)
Winter, Spring, Fall
\$150/night (dbl occupancy, bed/breakfast)
\$1500/night up to 15 guests, lodge rental

NUMBER OF ROOMS

Guest Rooms 12

MEETING ROOMS

2 Rooms totaling 2,000 s.f.

LAST RENOVATION

2010

ON-SITE ACTIVITIES

Summer – horseback riding, hiking, skeet shooting, archery, fishing, mountain biking, wagon rides, cookout dinners, square dancing.
The Wild West Weekend Package – ideal for groups looking to experience a brief yet well-rounded Western experience including trail riding, Western activities, overnight accommodation, and hearty ranch meals. This package is offered exclusively on Saturday.
Winter – sleigh rides, snowshoeing, cross country skiing (minimal grooming).

ON-SITE DINING OPTIONS

All meals included with package, individual meals are available upon request.

AMENITIES

Complimentary wifi; hot tub; kitchenette; shuttle service to airport & Amtrak available for additional fee.



© Donnie Sexton



* These are average room rates only. Please contact the property to get a detailed quote for your anticipated visitation dates. Additional fees and conditions may apply. Does not include holiday rates.

ON-SITE ACTIVITIES

Outdoor heated pool and hot tub, open year-round; cruiser bikes.

ON-SITE DINING OPTIONS

Hot breakfast served daily; dining options within walking distance (half a block from hotel).

AMENITIES

Complimentary wireless internet; business center; complimentary shuttle to airport and Amtrak (24-hour notice); SNOW Bus stop & shuttle to downtown; complimentary guest laundry facility; pet friendly in select rooms.



* These are average room rates only. Please contact the property to get a detailed quote for your anticipated visitation dates. Additional fees and conditions may apply. Does not include holiday rates.

AVERAGE ROOM RATES*

Summer
Hotel \$285
Winter
Hotel \$109
Spring/Fall
Hotel \$110

NUMBER OF ROOMS

Guest Rooms 67

MEETING ROOMS

2 Rooms totaling 2,522 s.f.

LAST RENOVATION

2019

THE FIREBRAND HOTEL



THE FIREBRAND HOTEL
650 E. 3rd Street, Whitefish, MT 59937
firebrandhotel.com

406-863-1900 or 844-863-1900
sales@firebrandhotel.com

GROUSE MOUNTAIN LODGE



Grouse Mountain Lodge

GROUSE MOUNTAIN LODGE
2 Fairway Drive, Whitefish, MT 59937
grousemountainlodge.com

Krista Borgardt
kborgardt@pursuitcollection.com
406-897-4960



AVERAGE ROOM RATES*

Summer

Deluxe Room starting at \$299

Winter

Deluxe Room starting at \$119

Spring/Fall

Deluxe Room starting at \$109

NUMBER OF ROOMS

Total Rooms 86

Deluxe Rooms 81

Skyline Rooms 5

MEETING ROOMS

Great Northern Meeting Room 750 s.f.

Executive Board Room 348 s.f.

Private Dining Room 650 s.f.

YEAR BUILT

2016

ON-SITE ACTIVITIES

Spa services, live music, fitness center, seasonal yoga classes, rooftop patio & hot tub, bicycle rentals, meetings and events.

ON-SITE DINING OPTIONS

Made-to-order breakfast; coffee kiosk offering fresh-baked pastries, smoothies, espresso drinks & Montana Coffee Traders' coffee; made-to-order lunch featuring specialty soup of the day; dinner menu including shareable plates, salads, and entrées; full-service bar offering 12 draught beers, wines from around the world, classic mixed drinks, and hand-crafted cocktails.

AMENITIES

Complimentary wireless internet; business center; airport and Amtrak shuttles (property is walkable to train depot); parking; SNOW Bus stop nearby.



* These are average room rates only. Please contact the property to get a detailed quote for your anticipated visitation dates. Additional fees and conditions may apply. Does not include holiday rates.

ON-SITE ACTIVITIES

Golf, fitness center, wildlife watching, cross country skiing, soccer, tennis, indoor pool, sauna, outdoor hot tub.

ON-SITE DINING OPTIONS

Logan's Grill – breakfast, lunch, dinner.

Outdoor Deck – dining with beautiful view of the golf course.

Wine Room – private dinners.

AMENITIES

Complimentary wireless internet; business center; complimentary shuttle to airport and downtown; suites have wet bars and mini-fridges; hospitality suite; 24 hr Fitness center; Indoor Pool; Outdoor Hot Tub & Firepit; Conference services including catering and A/V.



* These are average room rates only. Please contact the property to get a detailed quote for your anticipated visitation dates. Additional fees and conditions may apply. Does not include holiday rates.

AVERAGE ROOM RATES*

Summer

Hotel \$207

Winter

Hotel \$103

Spring/Fall

Hotel \$143

NUMBER OF ROOMS

Standard Rooms 42

Golf View Rooms 82

Suites 8

Loft Rooms 12

Total Rooms 144

MEETING ROOMS

9 Rooms totaling 11,000 s.f.

LAST RENOVATION

2016 – Guest Rooms

2017 – Logan's Bar & Grill

HAMPTON INN



HAMPTON INN
6340 US Hwy 93 South, Whitefish, MT 59937
hamptoninn3.hilton.com

Chantelle McDuffie,
Regional Director of Sales & Marketing
chantelle@lamberthotels.com
406-422-1944

KANDAHAR LODGE



KANDAHAR LODGE
3824 Big Mountain Rd, Whitefish, MT 59937
kandaharlodge.com

Tiffany Nitschke
406-862-6098
tiffany@kandaharlodge.com



AVERAGE ROOM RATES*

Spring
Guest Room \$149
Summer
Guest Room \$299
Fall
Guest Room \$169
Winter
Guest room \$109

NUMBER OF ROOMS

Guest Rooms 76

MEETING ROOMS

Meeting Room: 950 s.f.
Breakfast Room: 1300 s.f.

YEAR BUILT

2016

ON-SITE ACTIVITIES

Fire pit, salt water pool and hot tub, fitness center.

ON-SITE DINING OPTIONS

Treats Shop – candy, soda, frozen goods.

AMENITIES

Complimentary and paid wireless internet; business center; sundries; complimentary shuttle to airport, Amtrak and downtown.



* These are average room rates only. Please contact the property to get a detailed quote for your anticipated visitation dates. Additional fees and conditions may apply. Does not include holiday rates.

ON-SITE ACTIVITIES

Wellness Center: large outdoor jacuzzi, steam room, fitness room, and massage.
Winter: ski-in/out on Whitefish Mountain Resort. Cross country skiing and snowshoeing from lodge.
Summer: scenic lift rides to the summit, lift access mountain biking, hiking trails, zip lines, aerial adventure park, alpine slides, and kid-friendly activities.

ON-SITE DINING OPTIONS

Complimentary European style continental breakfast served daily; Café Kandahar – Serving local and regional foods, including elk, buffalo, lamb, mushrooms, and salmon. Open for dinner; Snug Bar – Open nightly serving specialty cocktails and an extensive list of wines featuring small plates from Café Kandahar.

AMENITIES

Free wifi; free bus shuttle service to town; complimentary on mountain shuttle. Meeting rooms come with AV equipment and free Wi-Fi. Water, coffee, and tea provided.



* These are average room rates only. Please contact the property to get a detailed quote for your anticipated visitation dates. Additional fees and conditions may apply. Does not include holiday rates.

AVERAGE ROOM RATES*

Summer
Hotel \$139
Winter
Hotel \$129
Spring/Fall
Exclusive group lodge rental available.
Custom pricing per group.

NUMBER OF ROOMS

Guest Rooms 50

MEETING ROOMS

Northern Lights Room – 800 s.f.
Board Room – 250 s.f.

LAST RENOVATION

2015 – Guest Rooms

THE LODGE AT WHITEFISH LAKE



Photo by Gravity Shots



THE LODGE AT WHITEFISH LAKE
1380 Wisconsin Ave., Whitefish, MT 59937
lodgeatwhitefishlake.com

877-887-4026 or 406-863-4000
sales@lodgeatwhitefishlake.com

AVERAGE ROOM RATES*

Summer

Hotel \$319; Suites \$364; 2-bed Condo \$522;
3-bed Condo \$638; Luxury Home \$1199

Winter

Hotel \$125; Suites \$180; 2-bed Condo \$269;
3-bed Condo \$329; Luxury Home \$569

Spring / Fall

Hotel \$115; Suites \$180; 2-bed Condo \$269;
3-bed Condo \$329; Luxury Home \$499

NUMBER OF ROOMS

Hotel Rooms 52
Lodge Suites 65
Condominiums 30
Luxury Homes 9

MEETING ROOMS

10 Rooms totaling 13,735 s.f.

LAST RENOVATION

2014

ON-SITE ACTIVITIES

Full-service day spa; full-service marina with boat rentals including kayaks, canoes, paddleboards, jet skis, ski/wakeboard boats, pontoon boats, and guided lake cruises; Viking Creek Wetland Preserve with interpretive nature trail; boutique shopping; Fellows Art; state-of-the-art fitness center; indoor pool & hot tub, outdoor hot tub, and seasonal outdoor pool.

ON-SITE DINING OPTIONS

Boat Club Restaurant & Lounge serving breakfast, lunch & dinner; Coffee Dock serving specialty coffees, teas and grab & go items; Tiki Bar & Grill serving lunch, dinner & cocktails June through mid-September; Full-service catering.

AMENITIES

Concierge services; live music; complimentary wireless internet; business center; valet parking; shuttle service for airport, Amtrak, downtown & ski resort; group transportation options; SNOW Bus stop.



* These are average room rates only. Please contact the property to get a detailed quote for your anticipated visitation dates. Additional fees and conditions may apply. Does not include holiday rates.

THE PINE LODGE



THE PINE LODGE
920 Spokane Ave., Whitefish, MT 59937
thepinelodge.com

Mary Smith
406-862-2569, ext. 602
msmith3@delawarenorth.com



ON-SITE ACTIVITIES

Indoor/outdoor swimming pool with a swim jet, open year-round; river access with complimentary paddleboards and kayaks, fat tire and cruiser bikes, snowshoeing.
The Den – pool table, shuffleboard, 80" flatscreen TV.

ON-SITE DINING OPTIONS

Limited continental breakfast served daily; half mile from downtown restaurants.

AMENITIES

Complimentary wireless internet; business center; complimentary shuttle to airport, Whitefish Mountain Resort, & Amtrak (24-hour notice); executive suite has full kitchen; SNOW Bus stop and shuttle to downtown; complimentary guest laundry; The Den game room; Winter White Glove Experience; pet friendly in select rooms.



* These are average room rates only. Please contact the property to get a detailed quote for your anticipated visitation dates. Additional fees and conditions may apply. Does not include holiday rates.

AVERAGE ROOM RATES*

Summer

Hotel \$285

Winter

Hotel \$130

Spring / Fall

Hotel \$109

NUMBER OF ROOMS

Hotel Rooms 76

- 16 Standard 2-queen rooms
- 6 Standard king ADA rooms
- 9 Deluxe king rooms
- 13 Deluxe 2-queen rooms
- 8 Riverside rooms w/2-double beds & sleeper sofa
- 8 King riverside rooms w/king & sleeper sofa
- 9 1-bedroom suites
- 1 Executive suite

MEETING ROOMS

Board Room: 200 s.f.

LAST RENOVATION

2017

TOWNEPLACE SUITES WHITEFISH



TOWNEPLACE SUITES® MARRIOTT

TOWNEPLACE SUITES WHITEFISH
300 Akers Ln., Whitefish, MT 59937

towneplacewhitefish.com

tps.fcats.gm@marriott.com
406.890.2053

WHITEFISH MOUNTAIN RESORT



WHITEFISH MOUNTAIN RESORT
Big Mountain Road, Whitefish, MT 59937
skiwhitefish.com

Jess Smith, Meetings, Catering & Weddings
406-862-1952 jesss@skiwhitefish.com

Sean Hagen, Eastern Region Lodging & Activities
406-862-1983 seanh@skiwhitefish.com

Paul Kozuch, Wester Region Lodging & Activities
406-862-1917 paulk@skiwhitefish.com



AVERAGE ROOM RATES*

Spring

Suites \$149

Summer

Suites \$279

Fall

Suites \$129

Winter

Suites \$109

NUMBER OF ROOMS

81 Suites

MEETING ROOMS

Meeting Rooms: 295 s.f.

Breakfast Room: 600 s.f.

YEAR BUILT

July 2018

ON-SITE ACTIVITIES

24hr state-of-the-art fitness center, firepit, Weber bbq grills, outdoor saltwater pool and hot tub, river walking trail.

ON-SITE DINING OPTIONS

In a Pinch Market – single serve beer and wine, frozen goods, candy, soda, and chips.
Limited continental breakfast served daily.

AMENITIES

Complimentary wireless internet, lobby computer and printer; equipped kitchens in all rooms;
complimentary airport shuttle to airport, Amtrak, and downtown Whitefish.



* These are average room rates only. Please contact the property to get a detailed quote for your anticipated visitation dates. Additional fees and conditions may apply. Does not include holiday rates.

ON-SITE ACTIVITIES

In the winter, skiers and riders enjoy more than 300 inches of snow annually on 3,000 acres and 105 marked runs accessible by 14 chairlifts. When the snow melts, the resort becomes home to thrilling zip line tours, Montana's only alpine slide, an aerial adventure park, lift-accessed downhill and cross-country mountain biking, scenic lift rides, summer tubing, Spider Monkey Mountain, and a strider bike park.

ON-SITE DINING OPTIONS

Base Lodge Cafe, The Bierstube, Café Kandahar & Snug Bar, Ed & Mully's, Hellroaring Saloon, Summit House Restaurant & Bar, private catering.

AMENITIES

Complimentary wireless internet; kitchenettes and full kitchens available; shuttle option (fee);
SNOW Bus stop.



* These are average room rates only. Please contact the property to get a detailed quote for your anticipated visitation dates. Additional fees and conditions may apply. Does not include holiday rates.

AVERAGE ROOM RATES*

Summer

Hotel \$109; 1-bed Condo \$199;
2-bed Condo \$229; 3-bed Condo \$300

Winter

Hotel \$109; 1-bed Condo \$219;
2-bed Condo \$269; 3-bed Condo \$300

Spring/Fall

Hotel (closed); 1-bed Condo \$127;
2-bed Condo \$159; 3-bed Condo \$219

NUMBER OF ROOMS

Hotel Rooms 43

Condo Rooms 221

MEETING ROOMS

7 Rooms totaling 12,341 s.f.

LAST RENOVATION

2014 – Base Lodge Renovation, Flower Point Chairlift

2015 – Summit House Renovation

2017 – Ed & Mully's Exterior Renovation,
Bierstube Renovation, East Rim Chairlift

2018 – Ed & Mully's Interior Renovation



WHITEFISH MONTANA

P.O. Box 4232, Whitefish, Montana 59937
For Groups Information Please Call:
1-406-862-3390
info@explorewhitefish.com