

# FOR THE LOVE OF THE WILD

4 SEASON  
GUIDE  
2024

PLAN THE  
ULTIMATE  
WHITEFISH  
VACATION

[EXPLOREWHITEFISH.COM](https://explorewhitefish.com)

WHITEFISH  
MONTANA



# Herb & Omni

RESTAURANT

OPEN WEDNESDAY THRU SUNDAY

DINNER SERVICE BEGINS AT 5PM

*Dinner & a Show!*

ADMIT  
ONE

No 1236789

*Come for Dinner,  
stay for the LIVE  
Entertainment!*

No 1236789

VISIT US ON SOCIAL FOR THE SCHEDULE OF EVENTS!

@HERB.AND.OMNI

@THESECONDSTORYWF

101 CENTRAL AVE., WHITEFISH, MT 59937  
WWW.101CENTRALWHITEFISH.COM

SECOND STORY



# WELCOME TO WHITEFISH MONTANA

Dear Traveler,

Welcome to Whitefish, one of the abiding and authentic mountain communities in the West. We are a small town filled with people who care about nature and a close-knit community. Our townspeople unite around community strength, our passion for recreation, and protecting this place for future generations.

Thank you for choosing to vacation here, in our hometown. We invite you to experience our community, our culture, and our “Love of the Wild”—and we encourage you to visit during our less traveled seasons. “Be a Friend of the Fish” and support our community values.

Our community is committed to reducing impacts. During your visit, please help protect our fragile landscape and wildlife. Leave no trace, pack out what you pack in, and treat our town with care.

When you can, please walk or bike. Our trail system links over 22 miles for access to the downtown, the river, the lake, and mountain. The urban trail network also connects with the Whitefish Trail, a 47-mile gateway to beautiful forests, prime wildlife habitat, sweeping vistas, pristine lakes, and inter-connected recreation areas.

Take a stroll downtown and visit our local shops and restaurants. Our locally-owned businesses are the backbone of our town and your patronage helps provide year-round livable wages. A smile and a tip go a long way for our local workers who add so much energy and character here.

Our community values the dignity, diversity, and inclusion of all locals and visitors. Generations have rolled up their sleeves and worked hard to create this vibrant town. Welcome to Whitefish! I encourage you to slow down, have a friendly conversation, and enjoy this rare and magical place.

Mayor John M. Muhlfeld

FRIEND OF THE FISH .....	4
EXPLORE THE SEASONS .....	6
ACTIVITIES .....	14
HOLIDAY DECORATIONS .....	20
SHOPPING .....	22
WELLNESS .....	26
THE NIGHT SKY .....	29
ARTS & CULTURE .....	30
STAY .....	34
THE WHITEFISH TRAIL .....	41
EVENT CALENDAR .....	42
EAT & DRINK .....	44
LIBATIONS & DISPENSARIES ....	52
BANKS .....	54
REGION MAP .....	55
HOW TO GET HERE .....	56
LOCAL AREA MAP .....	58


**WHITEFISH CONVENTION & VISITORS BUREAU**  
VISITOR INFORMATION CENTER  
505 East 2nd Street, Whitefish, Montana 59937  
877-862-3548 (Toll Free) 406-862-3395 (Local)  
[info@explorewhitefish.com](mailto:info@explorewhitefish.com)

© 2024 Whitefish Convention and Visitors Bureau.  
This publication was developed by Whitefish Convention and Visitors Bureau. Each property and service described in this publication are independently owned and operated and are members of the Whitefish Convention and Visitors Bureau, a non-profit member organization. Please help support our members! Your comments and feedback are welcome. Please email us at [info@explorewhitefish.com](mailto:info@explorewhitefish.com). Unauthorized reproduction or use of this publication in whole or part is not permitted. Printed in U.S.A. for domestic and international distribution.

Cover Photo: © Chuck Haney Photography,  
Central Avenue in Downtown Whitefish

This page: © Marc O'Brien, Autumn sunset in  
Whitefish

 [explorewhitefish](https://www.instagram.com/explorewhitefish)

 [Explore Whitefish](https://www.facebook.com/ExploreWhitefish)



# EXPLORE RESPONSIBLY



Photo © Visit Montana, The Whitefish Trail



## PLAN AHEAD

Check for closures or limited services before arriving. Have a backup plan. Check the weather before you go and pack the right gear.



## BE RESPECTFUL

Respect people and local communities. Help preserve our natural wonders. Be extra kind to our workers. They are the backbone of this town.



## PROTECT THE OUTDOORS

Pack up any trash and minimize your impact. Use a reusable water bottle. Put out your campfire completely.

For more information, please visit  
**FriendOfTheFish.com**



**WHITEFISH**  
• MONTANA •



# Be a Friend of The Fish Checklist

## #forabetterwhitefish

- ☐ Be extra kind to our workers. They are the backbone of this town.
- ☐ Fuel up at local businesses. Our merchants rely on your support!
- ☐ Plan ahead. Get your ticket for the Glacier National Park Vehicle Reservation system at [recreation.gov](https://www.recreation.gov).
- ☐ Avoid single-use plastic. Use or buy a reusable water bottle. Please recycle.
- ☐ Hire local guides for your adventures. You'll learn a lot along the way.
- ☐ Pack layers, extra food and water, and wayfinding devices.
- ☐ Bring a bag for TP and trash. Don't be gross. Leave No Trace.
- ☐ Give wildlife lots of space and take photos with a zoom lens.
- ☐ Always have bear spray accessible on the trail. Know how to use it.
- ☐ Be mindful of geotagging. Social media posts can overcrowd local trails.
- ☐ Put out your campfire completely: douse, stir, douse, and feel.
- ☐ Ignite inclusive conversations and show mutual respect for all people.
- ☐ Learn about the indigenous communities who originally settled these lands.
- ☐ Walk, bike, or hop on the S.N.O.W bus before you drive.
- ☐ Your car is awesome! But please don't create a new parking space.
- ☐ Breathe deep. Be patient when waiting in lines or traffic.
- ☐ Breweries, dispensaries, and distilleries have state specific rules. Please ask and follow.





A full-page photograph of a mountain biker riding down a dirt trail in a forest. The sun is setting in the background, creating a warm, golden glow. The biker is wearing a blue jacket and a helmet. The trail is surrounded by tall evergreen trees, and a lake is visible in the distance. The title "AUTUMN ADVENTURES" is overlaid in large white letters.

# AUTUMN ADVENTURES



The sky is Big,  
the sun is bright,  
and the town  
is buzzing  
with activity.



Photo © Glacierworld.com, Riverside Park



Photo © Glacierworld.com, The Firebrand Hotel



Photo © Glacierworld.com, Downtown Whitefish

**FALL IS ONE OF THE BEST TIMES** to visit Whitefish, and nature's wonders beckon to be discovered. With serene trails waiting to be explored and rivers and lakes inviting you for a paddle, you'll often find these beautiful landscapes all to yourself.

Witness the mesmerizing transformation of the Western Larch trees as they turn a brilliant shade of gold. As a bonus, the high peaks receive a dusting of snow, creating a breathtaking backdrop for your adventures. Whether you're hiking, biking, or paddling around Whitefish and Glacier National Park, the fall scenery will leave you in awe.

### A PERFECT FALL DAY

My day starts by waking up slowly to slivers of light coming through my windows, I make my way out of bed, step outside and take in the crisp morning air. With a couple of deep, cleansing breaths, I am prepared for the day.

First stop, coffee. Luckily, Folklore Coffee, known for its exceptional brews, is just down the street. I enjoy my latte, visit with a few friends and grab a coffee to go for my husband.

The sky is BIG, the sun is bright and the town is starting to buzz. After waking up my husband, we decide on Swift Creek Cafe for breakfast.

After breakfast, we have GRAVEL on our minds. Whitefish offers access to some of the best biking and hiking trails in the West. So we grabbed rental bikes from Glacier Cyclery and because I'm a fairly inexperienced rider, we warm-up on the bike path along Wisconsin Avenue. We venture onto Upper Whitefish Road for a scenic and tranquil ride. As we climb, I feel the stress of the week slipping away and welcome the sound of birds, the wind blowing between the sun-kissed trees, and we even catch a glimpse of a bald eagle perched high above. When my legs start to tire, we turn around for an exhilarating descent back toward town and transition to the asphalt bike path for a leisurely ride back.

After some quiet time back at home, we stroll back into town in search of a cocktail. Spotted Bear Spirits is on the menu followed by dinner at The Last Chair. Tim & Ali Good, owners of The Last Chair, have done a spectacular job not only in creating one of the finest dining experiences in town, but have crafted one of the finest wine lists in our region. We order a bottle of our favorite Paso Robles red and enjoy a well-deserved meal. On our way home, we hear tunes coming from the garden at Craggy Range. Local favorite John Dunnigan is playing and well... the night is still young!

~ Julie Mullins, Executive Director of Explore Whitefish

### A Perfect Fall Day

- ☐ Breakfast at Swift Creek Cafe
- ☐ Gravel Biking on Upper Whitefish Road
- ☐ Cocktail at Spotted Bear Spirits
- ☐ Dinner at Last Chair





# WINTER WONDERS





Photo © Brian Schott, Whitefish Mountain Resort



Photo © Outside Media

## Experience the Majestic Peaks of Glacier National Park in Winter

The dramatic peaks of Glacier National Park provide the perfect backdrop for your winter adventure. Nestled amidst this stunning natural beauty, Whitefish offers an array of thrilling activities for winter enthusiasts. From world-class skiing and snowboarding at Whitefish Mountain Resort to serene cross-country skiing and snowshoeing adventures, there's something for everyone seeking the thrill of the season.

For a cozy and romantic winter experience, snuggle up on a horse-drawn sleigh ride through the picturesque landscape. Or, channel your inner Iditarod musher on an exhilarating dog sledding expedition. Off the snow, Whitefish offers a wealth of non-stop adventures, including fitness studios to keep you active, ice skating for family fun, and excellent shopping opportunities. Satisfy your palate with delectable dining options that showcase the region's culinary delights.

Come and discover the winter wonderland of Whitefish, where adventure and relaxation blend seamlessly against the backdrop of Glacier National Park's breathtaking peaks.

### A PERFECT DAY

As I reach over to turn off my alarm and rub the sleep from my eyes, I catch a glimpse of fresh snow outside my window. I check the Snow Report at [skiwhitefish.com](http://skiwhitefish.com) and my suspicions are confirmed — it's a powder day! I grab my ski gear and head to Amazing Crepes for a quick breakfast and some liquid motivation. While sipping my coffee I decide to catch the free S.N.O.W. Bus so I can skip the parking and make a beeline for the lifts.

After a full day of powder face shots and belly laughs with friends, my legs are toast and I'm ready for a cold beer, so I hop back on the bus and head down the mountain for some après-ski at Bonsai Brewing Project. A day of skiing powder really works up an appetite, so a bit later I head downtown to meet friends for some expertly crafted rolls at Indah Sushi. While enjoying my meal, I overhear friends debating the weather and where the deepest powder can be found — "another 8 inches forecast for tomorrow?!" My appetite satiated, I sit back, smile and reflect on another perfect day in Whitefish.

~ Zak Anderson, Whitefish Local

As I reach over  
to turn off my alarm  
and rub the sleep  
from my eyes, I catch a  
glimpse of fresh snow  
outside my window.





A full-page photograph of two cyclists on a mountain trail. In the foreground, a woman with blonde hair, wearing a black helmet, a black tank top, and a black backpack, is seen from the back, leaning on a teal mountain bike. To her left, another woman with brown hair, wearing a purple shirt, a black and white helmet, and sunglasses, is smiling and looking towards the camera. They are standing on a stone wall overlooking a vast, green forested valley. In the background, majestic snow-capped mountains rise under a clear blue sky with a few white clouds. A small yellow horizontal bar is visible in the top left corner.

# SPRING DISCOVERY

Photo © Explore Whitefish/Dan Hansen, Spring Cycling on Going-to-the-Sun Road in Glacier National Park



**SPRING IS THE SECRET SEASON** in Whitefish. Snowplows push their way up Glacier National Park's Going-to-the-Sun Road, allowing scenic bike rides and casual hikes before the alpine road is opened to motor vehicles. The waterfalls are in full action and the motor-free road provides a quiet getaway into the heart of the park. Rent a paddleboard or kayak and float lazily down the Whitefish River as it meanders through town. The Whitefish Trail is in prime condition for hiking and mountain biking as spring wildflowers line the trail.



Photo © Peloton, The Whitefish Trail



Photo © Glacierworld.com, Downtown Whitefish

Spring in Whitefish  
has a special magic  
for my family.



Photo © Peloton, The Whitefish Trail

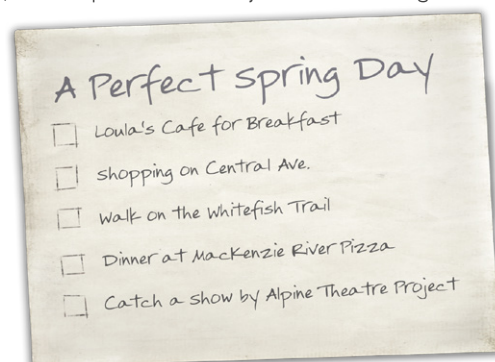
### A GREAT SPRING DAY

Spring is a golden time here in Whitefish. A great way to get going in the morning is a jog on the paved paths that meander through town and along the Whitefish River, followed by a stop at Montana Coffee Traders for an Americano. Then it's over to Loula's Cafe for a plate of their famous Stuffed French Toast. After breakfast, we stroll along Central Avenue with a stop in the Imagination Station to browse their amazing selection of toys and games for kids and adults.

Next I would take the kids for a walk on the Whitefish Trail to admire the Spring thaw while my wife heads to Shanti Yoga for a gentle yoga class. The kids can meet up with friends at Stumptown Arts Studio to paint pottery while we stock up on new outdoor gear at Sportsman & Ski Haus.

For dinner in Whitefish, we head to an old favorite, MacKenzie River Pizza Company. The Pesto Lodgepoles are a must! We're a theatre family, and Whitefish is a theatre town, so an Alpine Theatre Project show featuring Broadway actors is a must-see. This great Spring day ends with the family on our back deck with the fire pit as we watch the moon rise over Columbia Mountain to the east.

~ Luke Walrath, Business  
Manager of Explore Whitefish





# SUMMER ESCAPE



Photo © Visit Montana, Whitefish Lake



**MAXIMIZE YOUR TIME** exploring Whitefish where seemingly endless daylight hours provide ample opportunities to explore. Surrounded by millions of acres of protected state and federal lands, this charming town offers an extensive network of scenic roads and trails, inviting you to embark on unforgettable adventures.

For those who love the water, Whitefish boasts an array of lakes and rivers, perfect for kayaking, paddleboarding, rafting, and fishing. Additionally, after your day on the water immerse yourself in the local culture with live music and festivals that add a lively and entertaining touch to your fun-filled days.

### SUMMER HIKING TRAILS AROUND

My perfect summer day starts downtown before things get busy. We stop by Fleur Bake Shop for exquisitely baked pastries, coffee to go, and treats for later. Then, we head out for a hike in the vast forests that surround Whitefish in all directions. I stop by Nelson's Hardware and Sportsman & Ski Haus to make sure we have a trail map, plenty of water, bear spray and snacks. We make the short drive to Whitefish Mountain Resort and lace up our hiking shoes. Hopping on the scenic lift ride to the summit provides an awe inspiring view of Whitefish, the Flathead Valley, and the peaks of Glacier National Park. From the summit, we take our time hiking down the Danny On Memorial Hiking Trail. If you are lucky, you will find an unpicked stash of huckleberries. We always put one extra bag in our pack in case we find berries and one extra bag for trash and toilet paper. Leaving No Trace is a core value in Whitefish. After the hike, I can't wait to get back to the cooler waiting in my car, stocked with world-class Bonsai beer.

At the end of the day, we stroll down Central Avenue on the way to our dinner reservation at Wasabi Sushi Bar. After dinner, we make a quick stop at the Red Room Lounge for a nightcap. Before you know it, it's 10 o'clock and the sun is finally setting. We raise a glass to toast a day well spent.

~ Mariah Joos, Owner of Nelson's Ace Hardware

### HOW TO MAXIMIZE YOUR SUMMER EXPERIENCE

**Plan Ahead:** Secure your vehicle reservation for the Glacier National Park in advance at [recreation.gov](https://www.recreation.gov).

**Diverse Activities:** Indulge in a day at Whitefish Mountain Resort, the Whitefish Trail, or our State Parks.

**Alternative Transportation:** Consider alternative transportation options like the S.N.O.W. Bus, Whitefish Outfitters & Tours, or renting a bike.

**Reserve Early:** If renting a car is your choice, make reservations well in advance, as availability can be limited during the summer.

**Parking Tips:** Be prepared for limited downtown parking; you might need to walk a short distance to reach your destination.

**Dining and Activities:** Call ahead for restaurant reservations and secure tickets or reservations for your "must-see and do" activities.

**Local Guides:** Enhance your adventures by hiring local guides who can provide valuable insights along the way.

**Be Kind:** Show appreciation to the hardworking locals who make Whitefish thrive; they are the heart of the community.

**Stay Updated:** For seasonal updates and more information, check out [explorewhitefish.com](https://explorewhitefish.com).



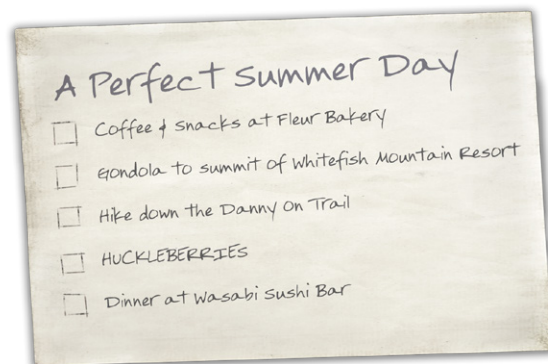
Photo © Brian Schott, Fly Fishing in Glacier National Park



Photo © Peloton, Downtown Whitefish



Photo © Explore Whitefish, Dan Hansen, Whitefish Downtown Farmers Market





# A REASON FOR EVERY SEASON

**NESTLED ON THE SHORES** of Whitefish Lake and surrounded by majestic mountain ranges, Whitefish offers boundless opportunities for outdoor enthusiasts and adventure seekers. Whether you're donning a backpack for a hike in Glacier National Park, embarking on a guided rock climbing or snowshoeing excursion, or indulging your passion for golf at the renowned 36-hole Whitefish Lake Golf Course (which transforms into the Glacier Nordic Center in winter), there's something for everyone. You can also saddle up for a scenic horseback trail ride or hop on a bicycle to explore the picturesque landscape on two wheels.



Photo © Glacierworld.com, Whitefish Walking Paths



Photo © Outside Media, Snowmobile Tour with Whitefish Marine



## PLAY ON THE WATER

Enjoy a picnic at City Beach, Whitefish Lake State Park, or Les Mason State Park, all nestled along the shores of Whitefish Lake. For an adventurous outing, paddle or kayak our Whitefish River. The region offers an abundance of lakes and streams, perfect for fishing, boating, and swimming.

## EXPLORE WHITEFISH BY BIKE

Cycling enthusiasts can explore an extensive network of country roads, perfect for road and gravel cycling. Whitefish boasts the Whitefish Trail, comprising 47 miles of beginner and intermediate trails that wind around Whitefish Lake. Additionally, adventure seekers can mountain bike at Whitefish Mountain Resort, featuring over 30 miles of lift accessible trails suitable for riders of all skill levels. For a more leisurely ride, the dedicated bike and pedestrian trail system along the Whitefish River awaits. Cyclists will find welcoming bike-friendly businesses ready to assist with supplies or bike rentals.

For roundups of our favorite trails in the area visit:

**Mountain Biking:** [explorewhitefish.com/mtb](http://explorewhitefish.com/mtb)

**Gravel Biking:** [explorewhitefish.com/gravel](http://explorewhitefish.com/gravel)

## WATCH FOR WILDLIFE

Exploring the mountainous terrain near Whitefish offers a unique perspective on our place in the natural hierarchy. Here, we coexist with majestic creatures like bears, wolves, and wild cats. While they are undeniably beautiful, it's crucial to remember that they can pose risks if not treated with the utmost respect and caution.

## WILDLIFE SAFETY TIPS

- + Never Approach a Wild Animal
- + Keep a Safe Distance, 300 feet (100 yards) for bears, wolves, mountain lions, 75 feet (25 yards) for goats, sheep, elk, moose, deer
- + Always Carry Bear Spray and Know How to Use It
- + Secure Your Food & Garbage
- + Hike in Groups and Make Noise
- + Be Aware of Your Surroundings

## WILDLIFE VIEWING SPOTS

- + Mountain goats and bighorn sheep are often seen near Logan Pass in Glacier National Park.
- + Grizzly and black bears can be spotted all over the area, but are commonly viewed throughout Glacier National Park.
- + Herds of elk can occasionally be seen driving on Whitefish Mountain Resort or along North Fork Road.
- + For more info and tips, visit [explorewhitefish.com](http://explorewhitefish.com)



Photo © Explore Whitefish/Dan Hansen



Photo © Explore Whitefish/Dan Hansen, Spring Cycling on Going-to-the-Sun Road



Photo © Explore Whitefish/Dan Hansen, Mountain Goats in Glacier National Park



## AMONG THE TOP 10 OVERALL SKI RESORTS IN THE WESTERN US.

~ SKI MAGAZINE READERS RANK WHITEFISH MOUNTAIN RESORT



Photo © Drew Silvers, Whitefish Mountain Resort

### WHITEFISH MOUNTAIN RESORT

A short 15-minute drive from downtown, Whitefish Mountain Resort presents a world-class skiing and snowboarding experience that exudes a relaxed ambiance. With an annual average of over 300 inches of Rocky Mountain snowfall, the resort spans 3,000 acres of terrain, encompassing glades, groomed runs, bowls, and challenging slopes suited for all skill levels.

From late May through late September, Whitefish Mountain Resort transforms into a vibrant adventure hub. Activities include exhilarating zip lines, thrilling alpine slides, lift-served mountain biking, an enticing aerial adventure park, and a mountaintop restaurant accessible via scenic lifts or hiking trails.

### SKI RUNS TO NOT MISS

- + The views of the Flathead Valley on *Inspiration*
- + Powder stashes in *Hellroaring Basin*
- + The rolling hills on *Hellfire*
- + Powdery turns along *North Fork*
- + Views of Glacier Peaks while dropping into *North Bowl*

### QUICK PICK BIKE RIDES

- + Spring scenic alpine road biking on the *Going-to-the-Sun Road*
- + Lift-served downhill mountain biking at *Kashmir* on Whitefish Mountain Resort
- + Multi-use, all skill levels biking on the *Haskill Basin* section of *The Whitefish Trail*
- + Intermediate, freeride trail at *Otter Pop* on Spencer Mountain
- + Paved multi-use, all skill level bike and pedestrian trails within Whitefish
- + Gravel riding on *Upper Whitefish Lake Road*



Photo © Explore Whitefish/Dan Hansen, Glacier Nordic Club



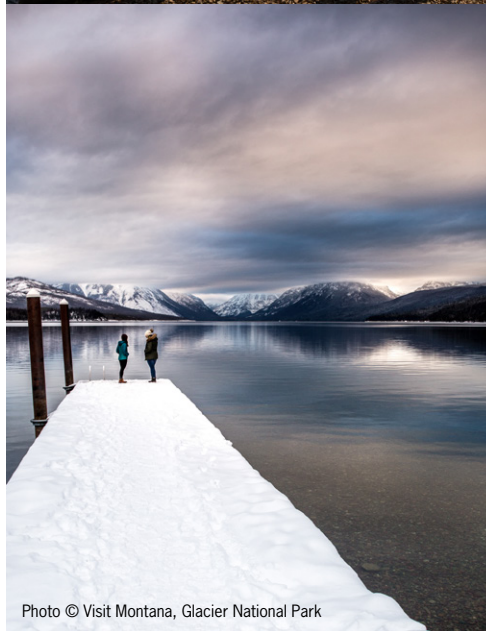
## GLACIER NATIONAL PARK

Whitefish sits a mere 25 miles away from Glacier National Park, a distinguished World Heritage Site, Biosphere Reserve, and the world's inaugural International Peace Park. Within this pristine wilderness, you'll uncover a vast network of more than 700 miles of hiking trails that lead you to captivating mountain lakes, awe-inspiring glaciers, cascading waterfalls, and a rich tapestry of native flora and fauna.

A true highlight for seasonal visitors is the renowned Going-to-the-Sun Road, a national historic landmark acclaimed as "the most beautiful piece of mountain road in the world." Typically open from late June through mid-October, this scenic route can be traversed by personal vehicle, complimentary shuttles, immersive Red Bus Tours, or enlightening Native American Sun Tours. When alpine sections are blanketed in snow, many miles become accessible to bikers and hikers, unveiling the park's hidden treasures.

In the Winter, embrace the tranquility of Glacier National Park under its snowy blanket during the quieter season. West Glacier to Lake McDonald Lodge is regularly plowed along the Going-to-the-Sun Road, offering visitors an enchanting snow-covered drive and ample opportunities for snowshoeing and cross-country skiing while keeping a keen eye out for wildlife.

Experience  
Glacier's  
pristine forests,  
lakes, alpine  
meadows,  
and rugged  
mountains.



### OUTDOOR ACTIVITY IDEAS

- + Rock climbing with The Mountain Guides Montana
- + Guided hiking with Whitefish Outfitters & Tours
- + Picking huckleberries on the *Danny On Trail*
- + Play a round at Whitefish Lake Golf Club
- + Horseback riding at Bar W Guest Ranch

### QUICK PICK DAY HIKES

- + The *Danny On Trail* at Whitefish Mountain Resort
- + Beaver Lakes Trailhead to the *South Beaver Loop* on *The Whitefish Trail*
- + *McDonald Creek Trail* in Glacier National Park
- + Swift Creek Trailhead to *Smith Lake* on *The Whitefish Trail*
- + *Stanton Lake Trail* in the Flathead National Forest



# ACTIVITIES

## 2FlyUs Hot Air Balloons

Sunrise & Sunset Balloon Rides June-Sept  
602-525-4282; 2FlyUs.com

## Backcountry Flying Experience

Float Plane Tours of Glacier Country  
406-890-3419;  
backcountryflyingexperience.com

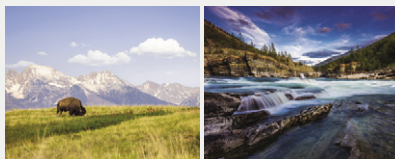


## Big Sky Brews Cruise

### Craft Beer, Wine & Distillery Tours

You drink, we drive! Sample a variety of local beer, wine and spirits. Guided tours include a behind the scenes look at a brewing facility, transportation between 3 stops, and 4 samples at each stop! Hop on as a lone explorer or group. Weekly & Custom tours available year around.

406-303-3559 • bigskybrewscruise.com



## Western Montana's Glacier Country

The exquisite northwest corner of Montana is a place of extraordinary adventures, boasting mesmerizing landscapes and charming small towns. It's also a place to treasure. Please recreate responsibly. Thank you for respecting the Treasure State. #GlacierMT

800-338-5072 • glaciermt.com



## Glacier Nordic Club

### Cross Country Ski Programs, Lessons, Rentals & Grooming

Get outside with Glacier Nordic! Our non-profit maintains and grooms over 67km of cross country ski trails, including the Big Mtn Trailhead, Whitefish Lake Golf Course (Glacier Nordic Center), Meadow Lake Golf Course (Meadow Lake Nordic), Muldown ski loop and Round Meadow, in partnership with the Forest Service. Visit us for rentals, lessons and programs all year long!

406-862-9498; 1200 Hwy 93 W  
glaciernordicclub.org

## Glacier Tourbase

Tour & Activity Online Booking  
406-200-8325; 643 Denver Street  
glaciertourbase.com



## Good Times Supply Co.

### Quality Service E-Bike Rentals and Delivery

Flathead Valley's easiest E-Bike rentals at the best prices. Locally owned and operated, high quality e-bike rentals with delivery across the Flathead Valley. Perfect for trips to Glacier Park, around Whitefish, Kalispell and Flathead Lake. Free delivery in Whitefish. Group and multi-day discounts available. Good Times Guaranteed.

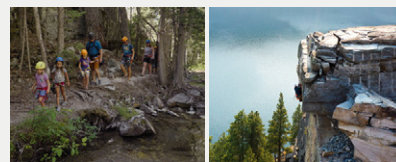
406-249-2792; goodtimessupply.co

## Great Northern Powder Guides

Guided Backcountry Cat Skiing & Deep Powder!  
406-881-2032  
greatnorthernpowderguides.com

## Hank's Hatchets

Flathead Valley's First Indoor Axe Throwing Venue  
406-730-2556; 6078 US Hwy 93 S  
hankshatchets.com



## The Mountain Guides Montana Guided Rock Climbing in Northwest Montana

The Mountain Guides Montana offers rock climbing ranging from beginner to advanced with half and full day options. As the only American Mountain Guides Association accredited guide service in Northwest Montana, our professional guides are trained and certified. Let the Mountain Guides Montana create an adventure to fit your needs.

406-344-7515 • 650 Blanchard Lake Rd  
themountainguides.com



## Montana E-Bikes & More Large Selection of E-Bikes for Sale & Rent

Come visit our Whitefish E-Bike store! We would love to get you launched on the adventure of a lifetime! We have great rental options to make sure we have bikes for all types of riders. We also have a huge selection of new Aventon E-Bikes for sale that will help you explore the Flathead Valley in a whole new way. Visit our store, book online, or give us a call.

406-200-8495; 6475 US Highway 93S,  
Suite 6; mtebikes.com

## Patio On Wisconsin

An Elegant, Relaxed and Intimate Venue  
406-471-5142; 204 Wisconsin Avenue  
patioonwisconsin.com





## The Marina at Whitefish Lake



### Whitefish Lake Boat Rentals & Cruises

The Marina at Whitefish Lake is open to the public, offering a full fleet of watercraft rentals including pontoon boats, ski boats, personal watercraft, kayaks, and stand-up paddleboards. Also available are full-service gas, ice, snacks, boat slips, and private cruises on The Lodge's wooden boats, The Lady of the Lake and the Laurie Jo!

**406-863-4020; 1380 Wisconsin Avenue**  
[lodgeatwhitefishlake.com/marina](http://lodgeatwhitefishlake.com/marina)

### Skydive Whitefish

*Tandem Skydiving*  
 1-866-680-JUMP; [jump@skydivewhitefish.com](mailto:jump@skydivewhitefish.com)  
[skydivewhitefish.com](http://skydivewhitefish.com)

### SpiritWorks Herb Farm

*Organic Herb Farm & Botanical Herb Garden*  
 Tours; 406-260-7098; 127 Hideaway Trail  
[spiritworkstrilogy.com](http://spiritworkstrilogy.com)

### Stumptown Ice Den

*Hockey, Public Skating, Figure Skating*  
 406-863-2477; 715 Wisconsin Ave  
[stumptowniceden.org](http://stumptowniceden.org)

### Stumptown Historical Society and Whitefish Museum

*Preserving the history of Whitefish and the Flathead Valley*  
 406-862-0067; 500 Depot Street  
[stumptownhistoricalsociety.org](http://stumptownhistoricalsociety.org)

### Whitefish Lake Golf Club

*36 Hole Golf Complex, All Services*  
 406-862-5960; 1200 Hwy 93 W.  
[golfwhitefish.com](http://golfwhitefish.com)

### Whitefish Outfitters & Tours

*Tour company & equipment rentals in downtown Whitefish.* 406-212-0080; 541 Spokane Ave.  
[whitefishoutfitters.com](http://whitefishoutfitters.com)

### Whitefish Ski Heritage Museum

*Documenting the early history of skiing in the Flathead Valley;* 406-885-2730; 705 Wisconsin Ave.  
[fvsef.org/ski-museum](http://fvsef.org/ski-museum)

### The Whitefish Trail

*Multi-use, Natural Surface, Singletrack*  
*Recreational Trail Network*  
 406-862-3880; [whitefishlegacy.org](http://whitefishlegacy.org)



### Whitefish Marine & RV Boat & RV Sales, Service, Rentals & Snowmobile Tours

Whitefish Marine is a locally owned and operated boat and RV dealership in Whitefish, MT. We offer Boat and RV Sales, Service, Storage, Boat and Car Rentals and Snowmobile Tours. We are here to meet your needs and exceed your expectations. Whitefish Marine & RV, where we make boating and camping fun and easy.

**406-862-8594; 5960 US Hwy 93 S**  
[whitefishmarine.com](http://whitefishmarine.com)



### Whitefish Mountain Resort Ski Resort and Summer Adventure

Only 15 minutes from downtown! Skiers and snowboarders enjoy over 300 inches of annual snowfall on 3,000 acres of glades, groomers, bowls, and steeps with runs for every ability level. In the summer, adventure awaits with Zip Line Tours, the Aerial Adventure Park, Alpine Slides, mountain biking, a Scenic Lift ride to Montana's only mountaintop restaurant, and more!

**406-862-2900; 1015 Glades Drive**  
[skiwhitefish.com](http://skiwhitefish.com)

### Whitefish Vertical Adventures

*Professional Guided Ice Climbing*  
 208-413-1602  
[whitefishvertical.com](http://whitefishvertical.com)

### Winter Woods Dog Sled Tours

*Dogsled tours – Tours for Two*  
 406-862-7232 for Reservations



Photo © Peloton, The Whitefish Trail





Photo © Chuck Haney Photography, Central Avenue in Downtown Whitefish





# KEEPING THE HOLIDAYS BRIGHT FOR OVER 70 YEARS

There are certain traditions that mark the holiday season – ugly sweaters, fruit cake and eggnog, to name a few. But what stands out in Whitefish is the annual decorating of the town, which quite literally, turns on the switch to bring in the holidays. Started in the 1950s, community volunteers have dressed downtown and streets in all directions each fall with towering strands of garlands, giant red bells, wreaths, snowflakes and over 10,000 bulbs of all colors, illuminating and transforming our frosty environment into a welcoming winter wonderland.

The postcard-worthy scene comes to life through the efforts of Whitefish Shines, the organization responsible for all the legwork, maintenance and hanging the decorations, and plenty of citizen volunteers. Local utility companies and the City of Whitefish also send workers and bucket trucks to assist.

While the overall spirit of the tradition has remained consistent over the years, the original incandescent bulbs have been updated to energy-efficient LED bulbs, new decorations have been added, and many of the original pieces have been restored, including a large Santa Claus ornament. The seasonal charm is timeless, but come February, when the weekend after President's Day arrives, the switch is then turned off and the decorations come down until next year.

## WANT TO GET INVOLVED?


**Volunteer to help with the annual installation and removal of the decorations in town. Install and removal dates for the next few years are as follows:**

**Nov 24, 2024 & Feb 23, 2025**

**Nov 23, 2025 & Feb 22, 2026**

## FUN FACT:

Before transitioning to LED bulbs, the base of each incandescent bulb was coated in vaseline each fall to extend its life over each winter, and to limit corrosion. The task was known as “buttering” the bulbs and it took countless community volunteer hours each year to complete the task.



It's a pleasure for our generation to continue the all-volunteer tradition of the Whitefish winter decorations. It is one of the longtime community projects that help maintain the authentic small-town charm and character of Whitefish.

– Chris Schustrom, Whitefish Shines Winter Decorations Project



# A SPECIAL SOMETHING FOR EVERY ONE

**A STROLL DOWNTOWN** along the covered sidewalks of Central Avenue or through the historic Railway District reveals artisan jewelry made with Montana-native gems or a new pair of hiking boots for the next adventure. Locally-roasted coffee beans, homemade skin care, hand-dyed yarn and huckleberry products make great gifts for those back home.

## TAKE IT HOME WITH YOU

- + Find some active gear at Glacier Cyclery
- + Create pottery or glass artwork at Stumptown Art Studio
- + Grab a new outfit at Harlow
- + Pick out some locally-designed clothing with flair at Chill Clothing Company
- + Restock your fly box with Montana Fly Company flies at Lakestream Fly Shop
- + Look for Made in Montana or Grown in Montana products throughout town







Photo © Glacierworld.com, Wild Coffee



Photo © Explore Whitefish/Dan Hansen, Lakestream Fly Shop

Discover fine artisan jewelry made with Montana-native gems or a new pair of hiking boots for the next adventure.



Photo © Glacierworld.com, Sprouts Children's Boutique

## Chill Clothing Co.

Fine Apparel, Accessories, and Art  
406-730-1777; 415 Second Street E.  
chillclothingcompany.com

## FORLOH

American-Made Outdoor Gear  
406-296-5670; 317 Central Avenue  
forloh.com



## Glacier Cyclery & Nordic Headquarters for Fun Since 1982

Full service year-round bike repair, sales and rental store located in downtown Whitefish. For 40 years we've geared folks up for adventure with quality bikes, accessories, clothing, maps and parts. In winter we also offer Nordic ski sales, tunes and rentals. Stop by for trail info and friendly service!

**406-862-6446; 326 Second St. E**  
glaciercyclery.com

## Grouse Nest Gift Shop

Regional and Glacier Souvenirs and Clothing  
406-862-3000; 2 Fairway Drive  
grousemountainlodge.com

## Harlow

A Feisty & Fun Boutique for Women  
406-730-1523; 100 Central Avenue, Ste 101  
lowandlette.com



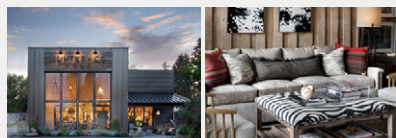
# SHOPPING



## Haskill Creek Farms Whitefish's Self-Care Store

The Haskill Creek Flagship Farmhouse is located on a beautiful country road, overlooking the mountains, and home to a wide variety of self-care, home and lifestyle items. The Farmhouse is well known for fun public and private events throughout the year. Their downtown store is a well curated self-care store where you can find everything from skincare to supplements to high quality culinary ingredients.

**406-201-2222; 1202 Voerman Road;  
33 Baker Ave (opening winter 2023)  
haskillcreekfarms.com**



## Hunter & Company Interior Design

### Interior Design Firm & Retail Showroom

Hunter & Company is an interior architecture and design firm with a retail showroom. The showroom features hand-selected and one-of-a-kind items, as well as some of the country's best manufacturers of furniture, lighting and home goods and gifts. Local craftsmen and artisan are also featured from the Northwest.

**406-862-1402; 200 Wisconsin Avenue;  
hunterinterior.com**

## Imagination Station

*Toys that Open the Imagination;* montanatoys.com  
221 Central Ave, Whitefish (406-862-5668) or  
132 Main St, Kalispell (406-755-5668)

## Lakestream Fly Shop

*Guided Trips and Full Service Fly Shop*  
406-862-1298; 669 Spokane Avenue  
lakestreamflyshop.com

## Marcus Community Market

*Specialty Grocery, Deli, Fresh Produce,  
Butcher, Wine & Beer.*  
406-862-7258; 9 Baker Ave

## THE MERCANTILE AT THE LODGE



### Western-Inspired Apparel, Jewelry & Home Furnishings

The Mercantile at The Lodge is a fashion-forward boutique shop inspired by the West - adventurous, independent, and unique. Items thoughtfully selected for quality include home furnishings, jewelry ranging from buffalo nickel to high-end turquoise, trending clothing and footwear for men and women, Whitefish keepsakes, and more!

**406-863-4000; 1380 Wisconsin Avenue  
lodgeatwhitefishlake.com/mercantile**

## Nelson's Ace Hardware

*Best retail hardware store ever*  
406-862-3573; 6490 Hwy 93 S  
acehardware.com/store-details/07568

## Notice Custom Snowboards & Wakesurfers

*Handmade Custom Snowboards and Wakesurfers*  
406-730-1357; noticesnowboards.com

## Polka Dot Sheep Fine Yarns

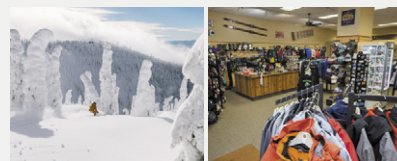
*Luxury yarns hand-dyed in Whitefish Montana*  
406-862-6390; 14 Lupfer Avenue  
polkadotsheep.com

## Sage & Cedar

*Pure, Natural, Organic Skin & Bath Care*  
406-862-9411; 214 Central Ave  
sageandcedar.com

## Sappari Design

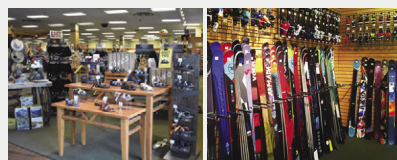
*Contemporary Clothing, Jewelry, Eclectic  
Home Decor, and Furniture Finds*  
406-862-6848; 215 Central Ave  
sapparimontana.com



## Snow Ghost Outfitters

**On-mountain ski/bike, summer and winter equipment and apparel.** Snow Ghost Outfitters can gear you up from head to toe— from helmets and goggles to jackets and gloves in winter and hiking poles, souvenir t-shirts and more in summer. Stop by Village Rentals for skis, boots, and bindings in winter and mountain bike equipment in summer.

**406-862-1996; 3893 Big Mtn Rd, C2  
skiwhitefish.com**



## Backcountry to Backyard Unlimited Adventure

A world of outdoor and athletic resources for all seasons, reflecting the recreational opportunities of Northwest Montana. Hiking camping, fishing, bikes, kayaks, SUPs, ski and snowboard, athletics, sports, technical, lifestyle and resort clothing and footwear. Winter and summer rentals plus full-service shop. Locally owned since 1968.

**406-862-3111; In the Mountain Mall,  
6475 Highway 93 South  
sportsmanskihaus.com**

## Sprouts

*A Children's Boutique*  
406-862-7821; 216 Central Avenue  
sproutswhitefish.com

## Tailwaggers

*Quality Pet Supplies & Dog Wash*  
406-862-8988; 334 Central Avenue, Suite B  
tailwaggerspet.com



### Tate Interiors

Interior Design Services & Showroom  
406-862-5777; 6464 US Hwy 93 S  
tateinteriors.com



### Third Street Market Natural and Organic Health Food Store

Third Street Market is Whitefish's only Natural Food store and oldest downtown corner grocery market. For over 30 years we have provided locally sourced and organic food choices as well as a large health and wellness section. Local beers to produce, air-chilled meats to gluten-free and vegan options, we've got you covered.

**406-862-5054; 244 Spokane Ave**  
**thirdstreetmarket.com**

### The Toggery

Outdoor Clothing, Footwear, Gear & Accessories  
406-862-2271; 122 Central Ave  
toggerymontana.com

### Trovare

Gourmet cookware, ingredients and cooking classes  
406-730-8515; 317 Central Avenue #102  
trovaremt.com

### Whitefish Thrift Haus

Non-Profit Thrift Store Supporting the WF Soroptimist  
406-862-3330; 303 E 1st Street  
soroptimistwhitefish.org



**BOOK ONLINE AT: MTEBIKES.COM OR CALL 406-200-8495**

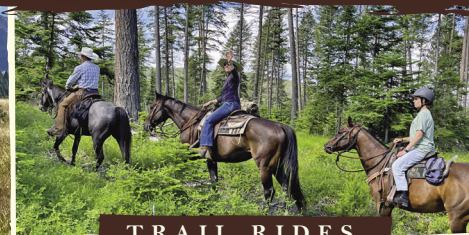
*Bar W Guest Ranch*

Whitefish, Montana

*Renew & Reconnect at Bar W*



**GUEST WEEK**



**TRAIL RIDES**

Experience a 6-Night Package Stay at Bar W Guest Ranch. The ranch is near Glacier National Park and a stone's throw from downtown Whitefish, MT. Singles, Couples, and Families of all ages are welcome!

Enjoy a scenic Two-Hour, Public Trail Ride through the lush, and peaceful mountain forest at Bar W Guest Ranch. Our horses and terrain are suitable for all levels of riders. Ages 7 and older can ride!

*www.TheBarW.com*  
**(406) 863-9099**

o f i d n



# YOUR PATH TO WELLNESS

## THE ACTIVE COMMUNITY

of Whitefish contains numerous establishments to nourish the body and mind. A variety of exercise facilities, yoga and Pilates studios, massage therapy day spas and other holistic treatment centers are widely available. While primary and emergency care is state-of-the-art in Whitefish, Logan Health Whitefish also offers a full patient-centered wellness experience that gives patients a quiet and soothing atmosphere and top-notch services that contribute to the healing process.



Photo © The Spa at Whitefish Lake

I CAN'T EVEN BEGIN TO EXPLAIN HOW MUCH I LOVE PILATES. NOT ONLY DO I BELIEVE IT'S GOING TO MAKE A DIFFERENCE IN MY SKIING, BUT IT HAS CHANGED MY RESPECT FOR MY MIND AND BODY.

~ MAGGIE VOISIN, WHITEFISH NATIVE, US OLYMPIC FREESKIER, X-GAMES GOLD MEDALIST; SPEAKING ABOUT DELIA PILATES





Photo © The Spa at Whitefish Lake

BEING FIT AND WELL IS MUCH MORE THAN JUST PHYSICAL EXERCISE, IT IS A LIFESTYLE IN WHICH YOU ARE AWARE OF YOUR CHOICES.

~ ART KRUEGER, WHITEFISH WAVE DIRECTOR

#### WELLNESS ON THE GO

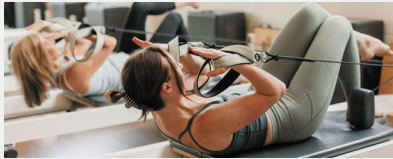
- + Visit Delia Pilates to improve your strength, flexibility, and posture
- + Work up a sweat at The Wave Aquatic & Fitness Center
- + Explore one of the 15 trailheads of The Whitefish Trail
- + Walk, run, or pedal the pedestrian trails along the Whitefish River
- + Paddleboard on the Whitefish River



Photo © Kristen Binder, Shanti Yoga Studio



## Delia Pilates



### Pilates studio, fitness clothing boutique and education facility

A boutique Pilates studio in Montana offering innovative and fun reformer, mat and chair combo classes, private sessions, and the best in workshops & education. We believe in the benefits of Pilates for a healthier, happier you. Our studio offers a unique approach to fitness that combines the transformative power of Pilates with a focus on joy and movement.

**406-862-6488; 505 Railway Street**  
[deliapilates.com](http://deliapilates.com)



## THE FIREBRAND

WHITEFISH · MONTANA



### Spa Services in Downtown Whitefish

The Firebrand Spa offers an array of day spa services, including therapeutic massage, facials, waxing, tinting, and foot treatments. During the warm season, join us for yoga classes on the Firebrand rooftop! Open to the public.

**406-863-1902; 650 East Third Street**  
[firebrandhotel.com/spa](http://firebrandhotel.com/spa)

## LOGAN HEALTH Whitefish



### Hospital with 24-Hour Emergency Services

Logan Health-Whitefish is a nonprofit Critical Access Hospital located in Whitefish, Montana with 24-hour emergency care including imaging and laboratory services. The hospital also offers walk-in care clinics in Columbia Falls, Eureka, and at two seasonal clinics located in West Glacier (summer) and at Whitefish Mountain Resort (winter).

**406-863-3500; 1600 Hospital Way**  
[logan.org/whitefish](http://logan.org/whitefish)

## shanti yoga studio



### Spreading Peace, Health & Greater Levels of Self-Awareness Through Yoga

Teaching yoga and the yogic lifestyle to the Whitefish community since 2006, we design in-studio & on-site private and semi-private classes and retreats based on your goals. Public classes are taught live stream via Zoom. We offer life coaching programs for couples, teens, individuals and small businesses that weave in yogic teachings.

**406.862.1885; 235 Central Avenue**  
[shantiyogamontana.com](http://shantiyogamontana.com)



## The Spa at Whitefish Lake



### Resort Day Spa on Whitefish Lake

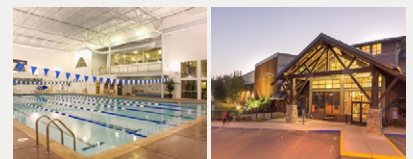
The Spa at Whitefish Lake's professional therapists and aestheticians offer massage, facials, waxing, and body and nail treatments. Indulge with all-natural products and a relaxation lounge stocked with therapeutic teas and tinctures! Premium retail products from Naturopathica, Coola, and Beyond Yoga encourage clients to continue their wellness regime at home.

**406-863-4050; 1380 Wisconsin Avenue**  
[lodgeatwhitefishlake.com/spa](http://lodgeatwhitefishlake.com/spa)

## SpiritWorks Herb Farm

Organic Herb Farm & Botanical Herb Garden  
 Tours; 406-260-7098; 127 Hideaway Trail  
[spiritworkstrilogy.com](http://spiritworkstrilogy.com)

## THE WAVE Aquatic & Fitness Center



### Flathead's Premier Aquatic & Fitness Center

**The Best Part of Your Everyday.**

Our friendly staff, clean facility, award winning design and world class equipment are just a few of the ways in which we are redefining the fitness experience.

**406-862-2444; 1250 Baker Avenue**  
[whitefishwave.com](http://whitefishwave.com)



# THE NIGHT SKY



Photo: © Brian Schott, Aurora Borealis over Whitefish Lake

## Behold, the Aurora Borealis

There are few scenes that provoke such awe in the natural world as the Aurora Borealis, also known as the “northern lights.”

We are fortunate here in Whitefish to regularly experience this celestial phenomenon, which fills the night sky with streaks, columns and waves of glowing hues – greens, reds, and even purples – sometimes dancing, like ribbons blowing in the wind. This is not entirely by luck, however – two conditions exist here in Whitefish that increase the likelihood that you might catch the spectacle: our northern latitude, and our dark night skies, undisturbed by light and air pollution. So, what are the northern lights? What are we seeing? And what creates it?

It all starts at the sun, where charged particles are ejected from its upper atmosphere, creating solar wind. When that wind reaches Earth’s upper atmosphere, guided toward the poles of its magnetic field, the aurora is born. What we see are excited electrons, depositing energy, which creates the glow way up above our heads. And the colors? That depends on the chemical makeup of the Earth’s atmosphere.

Like the weather, we can also predict the potential for seeing the northern lights. By observing sunspots we see along the rotation of the sun and knowing where the sun is on its own 11-year solar cycle, we can forecast the solar flare energy expected to be released into space. The more energy, the better chance of seeing the Aurora Borealis.

Of course, clear, dark skies are an essential ingredient to the mix. Fortunately, the City of Whitefish adopted a dark sky ordinance back in 2009, following the philosophy of the International Dark Sky Association, aimed at reducing the energy used in lighting and leaving the sky darker so more stars can be seen, or even better, to see the northern lights! Nearby Glacier National Park and its sister park, Waterton Lakes National Park of Canada, have earned official certification as International Dark Sky Parks. If you’re lucky enough to catch the Aurora Borealis over the majestic peaks of these two parks, you’ve pretty much hit the jackpot.

To check the Aurora Forecast, download the *My Aurora Forecast* app for your smartphone.

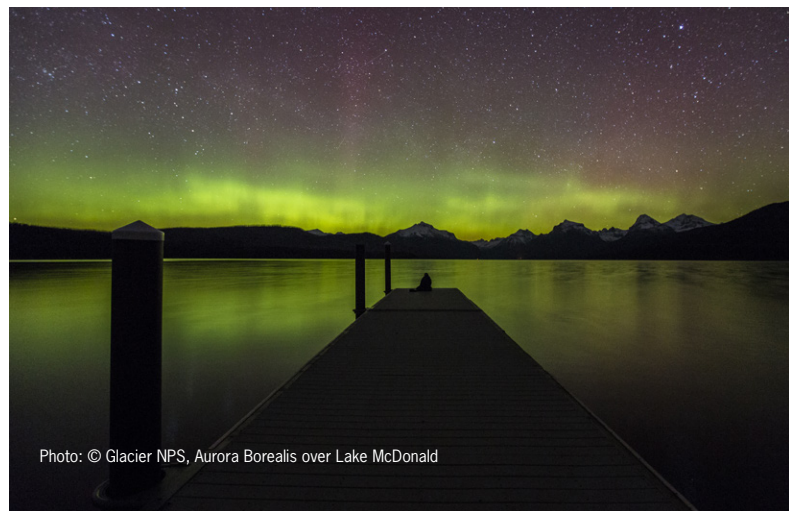


Photo: © Glacier NPS, Aurora Borealis over Lake McDonald



# WHERE CREATIVITY FLOURISHES

**IMMERSE YOURSELF** in the thriving arts and culture scene in Whitefish. Experience the talents of Broadway actors, explore galleries showcasing renowned sculptors and painters, and join monthly gallery nights from May to October to connect with local artists. Or get your own creative juices flowing at Stumptown Art Studio.

Whitefish is a hub for live music, theater, and literary events featuring local and national artists. Alpine Theatre Project and Whitefish Theatre Company stage top-notch plays and musicals. Don't miss out on the Whitefish Review, an award-winning local literary journal that hosts readings by celebrated authors and emerging voices in poetry and literature.





DRIVEN BY A PASSION FOR THE  
THEATRE AND A DESIRE TO AFFECT  
THE QUALITY OF LIFE HERE.

~ OLYMPIA DUKAKIS, ACADEMY AWARD WINNING ACTRESS, SPEAKING ON ALPINE THEATRE PROJECT



Photo © Alpine Theatre Project



Photo © Whitefish Theatre Company





## Alpine Theatre Project



### Professional theatre featuring actors from Broadway

Alpine Theatre Project presents world-class professional musicals, plays, and concerts featuring real Broadway and Hollywood actors, including Tony, Emmy, Golden Globe and Academy Award winners. Performances held at the Whitefish Performing Arts Center in Downtown Whitefish and other venues. It's real Broadway in the Rockies.

Photos © Brenda Ahearn

**406-862-7469; Box Office Hours:**  
Tue.-Sat. 12-5PM & 1 hr. Before Performance  
[atpwhitefish.org](http://atpwhitefish.org)

### Brian Schott Photography

Sports Action, Landscape, and Drone Aerial Photography; 406-261-6190

[brianschott.com](http://brianschott.com)

### Cawdrey Gallery

Contemporary Western Fine Art Gallery

406-730-8680; 206 Lupfer, #102

[cawdreycastle.com](http://cawdreycastle.com)



### Chuck Haney Photography

Stock, Commercial, Editorial Photography

Iconic Whitefish, Glacier and Montana Fine Art images on metal or acrylic surfaces by local professional photographer Chuck Haney. Chuck also offers large format coffee table books and the "Winter in Whitefish" image as Christmas cards on [chuckhaney.com](http://chuckhaney.com). Photo Tours across the U.S. and Europe.

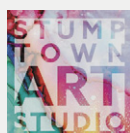
**406-261-0354**  
[portfolios.chuckhaney.com](http://portfolios.chuckhaney.com)



### FoR Fine Art Fine Art Gallery & Custom Framing

FoR Fine Art offers artwork by regional artists with contemporary and traditional themes, complemented by a selection of historic western art, jewelry, home décor and exceptional custom framing. If you are seeking a beautiful keepsake of your time in Whitefish, be sure to stop in FoR Fine Art on Central Avenue.

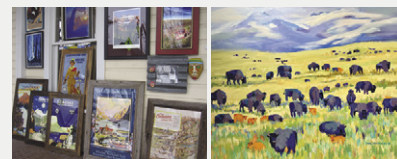
**406-730-8855; 235 Central Avenue**  
[forfineart.com](http://forfineart.com)



### Whitefish, Montana's Non-Profit Community Art Center

Walk in anytime to paint pottery, fuse glass or try our new embellishment station! Visit our website for a schedule of art classes, guest artist workshops and community art parties. Call to book the studio for your private events. Local artists are exhibited monthly in our art gallery. Open everyday!

**406-862-5929; 145 Central Avenue**  
[stumptownartstudio.org](http://stumptownartstudio.org)



### Custom & Ready-Made Frames

The Walking Man Frame Shop & Gallery offers custom picture framing plus unique ready-made picture frames. Our gallery features contemporary regional artists representing a variety of mediums, including pastel, ceramic, acrylic, mixed media, oil, photography and steel/stone outdoor sculpture. Designers welcome. Find us on Facebook & Instagram! Open: MON-FRI 10AM-5PM

**406-863-2787; 305 Baker Avenue**  
[thewalkingmanframeshop.com](http://thewalkingmanframeshop.com)



### Community Theatre, Performing Arts Center

Whitefish Theatre Company is celebrating its 45th season of bringing the performing arts to the Flathead Valley. WTC operates the 328-seat O'Shaughnessy Center in downtown Whitefish and presents a diverse season of theatre productions, music concerts, and special events.

Box Office hours: MON-FRI 11:00AM-3:00PM

**406-862-5371; 1 Central Avenue**  
[whitefishtheatreco.org](http://whitefishtheatreco.org)

### Whitefish Review

Non-profit Journal of Art, Literature, and Photography; 406-261-6190  
[whitefishreview.org](http://whitefishreview.org)



## WHITEFISH IS A SMALL TOWN IN A GOOD WAY.

~ CHADD SCOTT, FORBES.COM



Photo © Alpine Theatre Project



Photo © Alpine Theatre Project



Photo © Whitefish Theatre Company



# DISCOVER YOUR PERFECT STAY

## RELAXATION WILL COME EASY

after a full day exploring Whitefish and its surroundings. A broad selection of unique lodges, inns, hotels, guest ranches, condos, and vacation homes provide a variety of places to rest and relax. Whether in town, along Whitefish Lake, or on the mountain, you'll experience convenience, comfort, and warm Whitefish hospitality at every turn.

No matter your preferences or budget, our lodging options cater to all tastes, ranging from lavish luxury to a basic no frills experience. Each host strives to embody the welcoming spirit that defines Whitefish. Plus, with many properties conveniently located near free S.N.O.W. Bus stops, accessing ski slopes, shopping districts, and more is a breeze!







Photo © Grouse Mountain Lodge

# ITS GLITZ-FREE AND CHARM-FILLED TOWN MIXES THE AURAS OF BOHEMIAN WILD WEST AND PLUCKY SKI VILLAGE.

~ AMY TARA KOCH, THE WASHINGTON POST



Photo © Explore Whitefish/Dan Hansen, The Duck Inn Lodge

## BEST SPOTS TO CATCH THE SUNSET

- + Valley Overlook on the Whitefish Trail (Reservoir Trailhead)
- + Strolling the paths along the Whitefish River
- + Sipping a cocktail at The Tiki Bar at The Lodge at Whitefish Lake
- + The rooftop at 101 Sky Lounge
- + Skyles Lake Overlook on The Whitefish Trail (Lion Mountain Trailhead)
- + Lounging at Whitefish City Beach

## FAST FACTS ABOUT WHITEFISH

- + Elevation of town: 3,033 feet
- + Elevation of Big Mountain summit: 6,817 feet
- + Number of marked ski runs on Whitefish Mountain Resort: 111
- + Skiable Acres at Whitefish Mountain Resort: 3,000
- + Average annual snowfall in town: 72 inches
- + Average snowfall on Big Mountain: 300 inches
- + Whitefish is 65 driving miles from the US / Canada border
- + Six peaks in Glacier National Park are higher than 10,000 feet
- + Whitefish Lake is 7 miles long x 2.5 miles wide
- + Deepest point in Whitefish Lake: 222 feet deep
- + Nearby Flathead Lake is the largest natural freshwater lake west of the Mississippi River, 370 feet deep x 27 miles long x 15.5 miles wide



Photo © Bar W Guest Ranch



# STAY

## ICON KEY

<b>\$\$\$</b> \$=VALUE PRICE \$\$=MIDDLE PRICE \$\$\$=DELUXE PRICE	UNIVERSAL ACCESS	WIFI AVAILABLE	RESTAURANT ON-SITE	COURTESY VAN	S*N*O*W* BUS STOPS NEARBY	LAUNDRY ON-SITE
DAILY MAID SERVICE	NON-SMOKING FACILITY	ROOM SERVICE	EVENING TURN-DOWN	PETS ALLOWED	EXERCISE FACILITY	HOT TUB
SWIMMING POOL	FIREPLACE	HISTORICAL AMBIANCE	RUSTIC AMBIANCE	AWARD-WINNING	MEETINGS AND CONFERENCES	GREAT FOR WEDDINGS
CONTINENTAL BREAKFAST INCLUDED	FULL BREAKFAST INCLUDED	GOURMET BREAKFAST INCLUDED	EVENING REFRESHMENTS INCLUDED			

### Après Whitefish

Downtown Whitefish off the Whitefish River



406-862-8255 • 800 Spokane Avenue • [apreswhitefish.com](http://apreswhitefish.com)

### Bailey's Bed'n Bale

Whitefish's Most Unique Vacation Home



406-270-1603 • 475 Timber Doodle Lane • [montanabednbale.com](http://montanabednbale.com)



### Bar W Guest Ranch

4 Miles West of Whitefish



Bar W Guest Ranch will treat you to true Montana hospitality from the moment you arrive until long after the sun sets. Bar W is located in beautiful Northwest Montana, nestled between two pine-covered ridges at the base of Spencer Mountain. The ranch is near the vibrant town of Whitefish and close to Glacier National Park!

406-863-9099 • 2875 Highway 93 West • [thebarw.com](http://thebarw.com)

### BaseGlamp

15 Minutes North of Downtown Whitefish



406-852-7351 • 767 Lupfer Road • [baseglamp.com](http://baseglamp.com)

### Baymont by Wyndham Whitefish

Montana hospitality & Rocky Mountain scenery



406-862-4020 • 6390 US Hwy 93 S  
[wyndhamhotels.com/baymont/whitefish-montana/baymont-inn-suites-whitefish/overview](http://wyndhamhotels.com/baymont/whitefish-montana/baymont-inn-suites-whitefish/overview)

### Best Western Rocky Mountain Lodge

Close to Downtown and Area Activities



406-862-2569 • 6510 Hwy 93 South • [rockymtnlodge.com](http://rockymtnlodge.com)

### Duck Inn

Located Along the River and Close to Town



406-862-3825 • 1305 Columbia Avenue • [duckinn.com](http://duckinn.com)



THE FIREBRAND  
WHITEFISH-MONTANA

### The Firebrand Hotel

Downtown corner of Spokane and Second



The Firebrand's bold and adventurous style reflects a blend of urban sophistication and Montana's rugged landscapes. Amenities to indulge travelers include a coffee bar, spa, and rooftop patio with hot tub. Ignite your senses at the Firebrand Restaurant, offering seasonal breakfast, dinner, and a full bar with happy hour daily.

406-863-1900 • 650 East Third Street • [firebrandhotel.com](http://firebrandhotel.com)



## Five Star Rentals of Montana

Accommodations on the Mountain, Lakeside, and Downtown



406-862-5994 or 877-523-5994 • 704 Baker Avenue • [fivestarrentals.com](http://fivestarrentals.com)

## The Flat – Downtown Whitefish

Heart of Downtown Whitefish, Roomy, Big Views



406-270-8771 • 419 E 2nd Street • [wasabimt.com/the-flat](http://wasabimt.com/the-flat)



## Garden Wall Inn

One Block from Downtown Shops and Restaurants



"Known for superior service and attention to detail, this award-winning inn creates a sense of comfort and welcome beyond your expectations." Five luxurious guest rooms are furnished in period antiques. Full, gourmet breakfasts showcasing local products, prepared by our chef. Great downtown location is a short walk from shops and restaurants.

406-862-3440 • 504 Spokane Ave. • [gardenwallinn.com](http://gardenwallinn.com)



## Glacier Bear Condo

Whitefish Mountain, Slopeside On Chair 3



Glacier Bear Condo is a true ski-in ski-out condo on Whitefish Mountain. This luxury 2 bedroom, 2.5 bath chalet sleeps six. Enjoy your private deck with hot tub, 2 fireplaces, ski lockers, fitness room & all the modern amenities in a spectacular location to launch your Montana vacation.

406-233-9600 • 3868 Gelande St, Chalet #2 • [GlacierBearCondo.com](http://GlacierBearCondo.com)



## Grouse Mountain Lodge

Steps from Downtown, Golf Course Views



Located steps from downtown Whitefish and adjacent to the Whitefish Lake Golf Course, Grouse Mountain Lodge is a year-round destination, offering comfortable Western style accommodations and event space. The lodge features a lively restaurant, pool, hot tub and a 40-year reputation of providing truly authentic Montana hospitality.

406-862-3000 • 2 Fairway Drive • [grousemountainlodge.com](http://grousemountainlodge.com)

## Hampton Inn & Suites

Located 1 Mile South of Whitefish

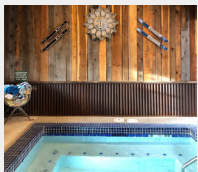


406-730-8901 • 6340 Hwy. 93 South • [hampton.com](http://hampton.com)



## Hidden Moose Lodge

2 Minutes to Downtown,  
5 Minutes to Skiing



Designed and built to reflect the rustic, rugged history that is Montana, but with all the amenities that make our guests feel right at home. From the river rock fireplace located in our Great Room to the outdoor hot tub and our hearty breakfasts, you will want to make the Hidden Moose your relaxing retreat during your visit to Whitefish.

406-862-6516 • 1735 East Lakeshore Drive • [hiddenmooselodge.com](http://hiddenmooselodge.com)





## Kandahar Lodge

Ski-in/out, 10 minutes to Whitefish



Kandahar Lodge is a charming mountain lodge located in the village of Whitefish Mountain Resort featuring world class skiing, hiking, and biking right out the front door. Experience comfortable lodge rooms, outdoor jacuzzi, steam room, massage, upscale dining, vintage snug bar, and inviting lobby with crackling fireplace. Continental breakfast included.

**406-862-6098 • 3824 Big Mountain Road • kandaharlodge.com**



## Lakeshore Rentals

Quality Condos, Cabins & Vacation Homes



We offer a variety of lake and mountain vacation properties for your Summer or Winter getaway. Whether you're coming to experience downtown, play in the lake, ski the mountain, golf the greens, fish the river, or hike in Glacier National Park – Lakeshore Rentals can find you the perfect property!

**406-863-9337 • 1750 East Lakeshore Drive • lakeshorerentals.us**



## The Lodge at Whitefish Lake

On the shore of Whitefish Lake



This award-winning resort is located between Whitefish Lake and the Viking Creek Preserve, minutes from downtown. Accommodation options include spacious suites and hotel rooms, fully-equipped condominiums, and luxurious homes. Event space, Boat Club Restaurant and Bar, Tiki Bar, Spa, indoor and outdoor pools and hot tubs, and marina are on-site.

**406-863-4000 • 1380 Wisconsin Avenue • lodgeatwhitefishlake.com**



## The Pine Lodge on Whitefish River

Near Downtown on the Whitefish River



The Pine Lodge is conveniently located blocks from downtown, with balcony views of the meandering Whitefish River. The Pine Lodge offers many amenities, such as fire pits, indoor/outdoor swimming pool and hot tub, and complimentary kayak, paddle board and bike rentals. The Pine Lodge is both family and pet friendly!

**406-204-4519 • 920 Spokane Avenue • thepinelodge.com**



## Snow Bear Chalets – Treehouses

Slopeside Ski-in/Ski-Out Luxury Treehouses at Whitefish Mountain Resort



One of TIME Magazine's 100 WORLD'S GREATEST PLACES, and VRBO'S 25 ALL-TIME FAVORITE PROPERTIES! World's 1st Ski-in/Ski-out TREEHOUSES, slopeside at Whitefish Mountain Resort. Each whimsical chalet feature award-winning design, incredible views, treetop private hot tub, soaring turret with fiber-optic stars, gourmet kitchen, gas fireplace, WiFi, Sonos, down comforters, and luxury amenities. Private, perfect for natural physical distancing.

**888-8MT-BEAR or 888-868-2327 • 3872 Winter Lane • snowbearchalets.com**

## TownePlace Suites by Marriott Whitefish

One Mile from Downtown Whitefish



**406-890-2053 • 300 Akers Lane • townepacewhitefish.com**



# KANDAHAR *Lodge*

at Whitefish Mountain Resort

Bar & Restaurant on-site | Continental Breakfast  
Large Outdoor Jacuzzi | Steam Room | Fitness Center  
Free WiFi | Massage Studio | Crackling Fireplace in Lobby  
Ski-in/out | Heated Boot Room | Ski Storage

**KandaharLodge.com**

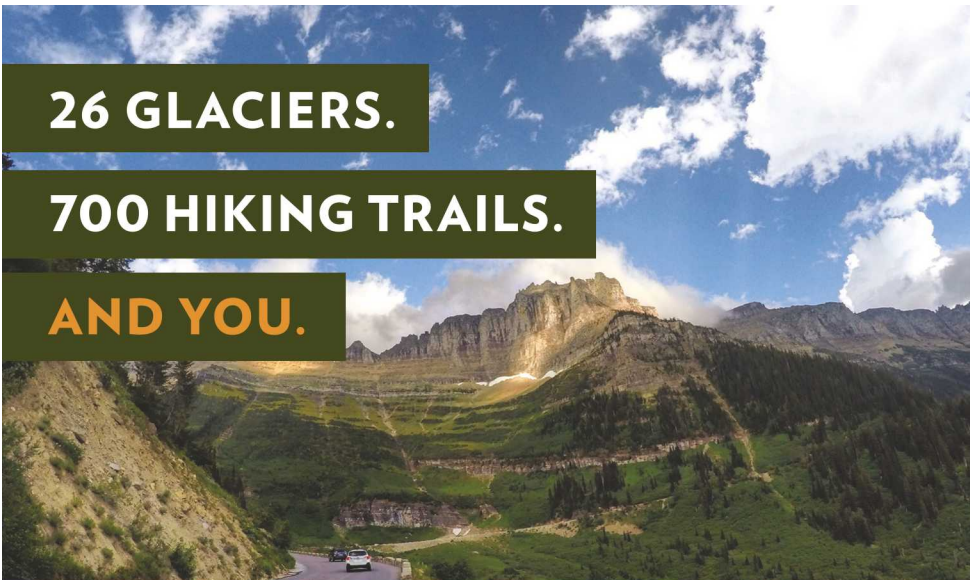


Kandahar Lodge | 3824 Big Mountain Road | (800) 862-6094

**26 GLACIERS.**

**700 HIKING TRAILS.**

**AND YOU.**



Located minutes from downtown Whitefish, The Pine Lodge on Whitefish River gives you the perfect address for adventures in the sun or snow. Make the most of your trip with extras included with your stay, like bicycles, kayaks, and an indoor/outdoor pool and hot tub. Plus, explore Glacier National Park, which is just 26 miles away.

**PLAN YOUR MONTANA  
GETAWAY NOW.**

 **THE  
PINE LODGE**  
ON WHITEFISH RIVER

**ThePineLodge.com**  
406-204-4519



## Whitefish Bike Retreat

Trailside Lodging & Camping on Whitefish Trail



406-260-0274 • 855 Beaver Lake Road • [whitefishbikeretreat.com](http://whitefishbikeretreat.com)



## Whitefish Glacier Vacations

Selection of Vacation Rentals in Whitefish



Our selection of vacation rentals in Whitefish makes it easy to find the perfect lodging. Whether you're looking for ski-in ski-out locations on the mountain or luxury townhomes close to downtown restaurants and charming shops, we have accommodations to fit your Montana needs.

406-233-9600 • 3868 Gelände Street • [whitefishglacier.com](http://whitefishglacier.com)



## Whitefish Mountain Resort Lodging

Ski-In, Ski-Out at Whitefish Mountain Resort

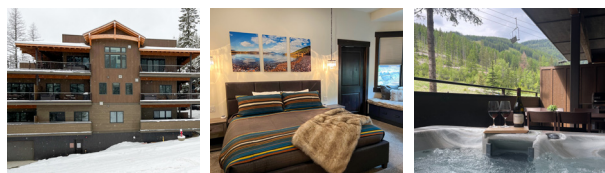


Whitefish Mountain Resort Lodging offers a variety of on-mountain accommodations to suit any budget and all tastes in winter and summer. Relax in luxurious mountain style townhomes, stay slopeside in ski-in/ski-out condominiums, or stay a short walk away from the heart of the Village. Dining, entertainment, on-mountain action, and the town of Whitefish are all at your fingertips when you stay with us.

406-862-2900 • Whitefish Mountain Resort • [skiwhitefish.com/lodging](http://skiwhitefish.com/lodging)

## Whitefish Slopeside Condo

Stay right next to the ski lift!



Whitefish Slopeside Condo is conveniently located at Whitefish Mountain Resort. Truly Ski-in/Ski-out on Chair 3 and close to summer fun at Glacier National Park. Luxury 2 bed/2 bath (sleeps 6) accommodation includes private hot tub, BBQ, 2 gas fireplaces, in-unit washer/dryer, fully stocked kitchen, reserved indoor parking, and fitness center.

503-799-7952 • [whitefishslopesidecondo.com](http://whitefishslopesidecondo.com)





# THE WHITEFISH TRAIL HISTORY

Photo © Marc O'Brien

## A Trail by the People, For the People

In the early 2000s, as development interests threatened several beloved open space areas around Whitefish for hiking, biking and nordic skiing, the local community responded in a way that galvanized its collective love and appreciation for its surrounding natural environment, and the importance of protecting these spaces forever. Years later, those seeds have sprouted and grown into the popular Whitefish Trail (WT), a 47-mile (and growing) network of non-motorized, multi-use trails that snakes its way through several beautifully forested regions surrounding town. Accessed via 15 trailheads, the WT is now a hallmark community project, offering a place to exercise, walk dogs, and enjoy the scenery for generations to come.

## Preserving and Enjoying Our Wild Corridors

Over the years, the WT has grown to include eight regions: Lion Mountain, Beaver Lakes, Skyles Lake, Spencer Mountain, Lupfer, Reservoir/Haskill Basin, Holbrook Overlook, and Swift Creek/Smith Lake. Each area offers its own unique views, water features, flora and fauna and trail characteristics. Regardless of what trail you may choose, or what form of recreating you enjoy, the WT brings you closer to the natural environment. That connection is the one that helps both individuals and communities understand the big picture – of how important it is to keep places wild, which helps maintain critical corridors and habitat for wildlife, while also providing recreational opportunities for locals and visitors to enjoy.

## The Good Work Continues...and it Includes YOU

As usage of the WT increases, so too does the need for community stewardship. Proper trail maintenance, responsible etiquette and ongoing education have become the active human components to continue WT's successful legacy and volunteering opportunities exist year-round. Community fundraising, of course, is the lifeblood of the program, which taps into annual traditions like the Whitefish Trail Hootenanny, the Whitefish Trail Legacy Run, and the Whitefish Community Foundation's Great Fish Community Challenge. This helps fulfill the fiduciary responsibility, as a trustee of the school trust lands, and push forward the key tenets of conservation, education and recreation, for today and for future generations.

## Closing the Loop

The WT is also close to achieving its long-term goal of "closing the loop" with a contiguous route around Whitefish Lake. The proposed 600 acres of conservation at Smith Lake is the current project of focus and would include a permanent trail easement for the WT, ensuring public access in perpetuity. To learn more about how to support the WT and the Whitefish Legacy Partners, visit [www.whitefishlegacy.org](http://www.whitefishlegacy.org).



To view the trail maps of the Whitefish Trail system, go to [whitefishlegacy.org/maps-conditions](http://whitefishlegacy.org/maps-conditions)



# CELEBRATE THE SEASON



WHITEFISH STREETS ARE ALIVE WITH MUSIC, GALLERIES, LIVE THEATRE AND FESTIVALS.  
VISIT [EXPLOREWHITEFISH.COM/EVENTS](http://EXPLOREWHITEFISH.COM/EVENTS) FOR FULL DETAILS OF EVENTS THROUGHOUT THE YEAR.

## FALL

Whitefish Songwriter Festival

Great Northwest Oktoberfest

Whitefish Trail Legacy Run

## WINTER

Downtown Whitefish  
Holiday Decorations  
(Pg 20 for more info)

Whitefish Christmas Stroll  
(early Dec)

Whitefish Winter Carnival

## Whitefish Mountain Resort Events

Whitefish Mountain Resort  
open for skiing & Snowboarding  
(early-Dec – early-Apr)

Santa's Christmas Eve Torchlight  
Parade & Gift Giveaway

New Year's Eve Torchlight  
Parade and Fireworks

Biggie Banks Series  
(banked slalom)

Tommy Moe Kids Race League

Whitefish Whiteout

President's Weekend Torchlight  
Parade and Fireworks

Nate Chute Boardercross  
& Banked Slalom

Closing Weekend Pond Skim  
[skiwhitefish.com/events/](http://skiwhitefish.com/events/)

S.N.O.W. Bus Winter Brewfest



Photo © Chuck Haney Photography, Torchlight Parade at Whitefish Mountain Resort





Photo © Chuck Haney Photography, Whitefish Winter Carnival

## SPRING

**Whitefish Marathon,  
Half-Marathon & 5k**  
**First Thursday Gallery Art Walks**  
(May – Oct)

**Tuesday Downtown  
Farmer's Market**  
(late May – Sept)

**Going-to-the-Sun  
Road Hiker/Biker Season**  
(May – mid-June)

## SUMMER

**Summer Arts Festival**  
**Whitefish Woody Weekend**  
**July 4 Fireworks at  
Whitefish City Beach**

**Under the Big Sky Festival**  
**Big Mountain Run by  
Glacier Nordic Club**  
**Huckleberry Days Art Festival**

**Whitefish Legacy Partners  
Hootenanny**  
**S.N.O.W. Bus Summer Brewfest**



Photo © Chuck Haney Photography, Whitefish Downtown Farmers Market



# CULINARY DELIGHTS AWAIT YOU

FOR THE LOVE  
OF GREAT FOOD



Photo © Herb & Omni



Photo © Glacierworld.com, Fleur Bake Shop



## A DINING AND DRINKING SCENE THAT FEELS LIKE A BIG CITY

~ LESLIE KELLY, ZAGAT.COM

### INDULGE IN AWARD-WINNING CUISINE,

complemented by an impressive selection of world-class wines and exceptional service – the trifecta of a memorable dining experience in Whitefish. Here, culinary delights span a spectrum of styles and flavors, with many chefs taking pride in sourcing fresh, local, and organic ingredients to craft their dishes. Every meal is a chance to savor the essence of the region.

After a delectable meal, immerse yourself in the local nightlife at the vibrant bars and lounges that line the downtown streets. Whether you're into acoustic melodies in a cozy bar or dancing to the beats of a full band or DJ, live music awaits almost every night of the week.

### FOODS FROM THE REGION

- + Wild huckleberries ripen throughout July and August from the valleys up to the mountain tops – a close cousin of the blueberry.
- + Edible mushrooms such as the morel, are found in nearby forests, and are abundant in spring and early summer.
- + Flathead cherries are grown along the shores of Flathead Lake, where lake-effect keeps temperatures a bit more moderate than other parts of the region. Cherries ripen in July.
- + Elk, bison, and various fish are all popular regional offerings.



Photo © Grouse Mountain Lodge



Photo © Glacierworld.com, Indah Sushi



Photo © Glacierworld.com, Craggy Range Bar & Grill



# EAT & DRINK

## ICON KEY

\$\$\$ \$=\$5-15 AVG. ENTRÉE \$\$=\$9-24 \$\$\$=\$15-39+	BLD B=BREAKFAST L=LUNCH D=DINNER	FULL BAR	PRIVATE ROOM AVAILABLE	WINNING WINE LIST	OUTDOOR SEATING AVAILABLE	DELIVERY AVAILABLE
RESERVATIONS SUGGESTED	BEER & WINE	CATERING AVAILABLE	WIFI AVAILABLE	CHILD FRIENDLY	BAR SEATING AVAILABLE	LIVE MUSIC OFTEN

### Amazing Crepes

Breakfast, Brunch, and Coffee

\$ BL

406-862-6002 • 123 Central Avenue • [amazingcrepes.com](http://amazingcrepes.com)

### Base Lodge Café, Bar and Coffee Bar at Whitefish Mountain Resort

Fresh Food Options, Coffee and Full Bar

\$ BL

406-862-2900 • In The Base Lodge at Whitefish Mountain Resort • [skiwhitefish.com](http://skiwhitefish.com)

### Beldi

Mediterranean and Levantine inspired cuisine

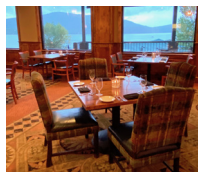
\$\$\$ \$\$\$ D

406-730-1677 • 306 2nd Street E • [beldiwi.com](http://beldiwi.com)



### Boat Club Restaurant

Regional Specialties, Premium Steaks, Fresh Seafood



\$\$\$ \$\$\$ BLD

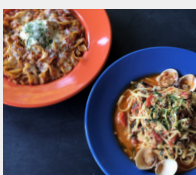
Whitefish's only lakefront restaurant welcomes guests like family, featuring options to delight and nourish your adventure. Breakfast and dinner are served in the Dining Room, lunch and dinner in the Bar - a lively setting with live music 2-3 nights/week, and waterfront food and beverages at the seasonal Tiki Bar.

406-863-4040 • 1380 Wisconsin Avenue • [lodgeatwhitefishlake.com/eat-drink](http://lodgeatwhitefishlake.com/eat-drink)



### Ciao Mambo

Cozy Italian Cuisine



\$\$\$ D

The lights are low, the music is up, the wine is flowing, and the energy is buzzing. It's a perfect evening and a perfect setting for Italian food at Mambos. With creative twists on classic recipes there is something for everyone in the family. Our pasta dishes with rich, savory sauces and fresh ingredients, thin crust pizzas baked to perfection, and unmatched service will keep you coming back for more.

406-863-9600 • 234 E. 2nd Street • [ciamambo.com](http://ciamambo.com)



### Craggy Range Bar & Grill

Your Sports Bar Headquarters



\$\$\$ LD

Craggy's 25+ flat screens and full bar with the only frost rail in the valley are just a couple reasons why it's THE place to watch sports. Add in a full-service patio and fire pit, outdoor live music, innovative menu, and kick-butt happy hour, and it's THE place to hang out during any season.

406-862-7550 • 10 Central Avenue • [thecraggyrange.com](http://thecraggyrange.com)

### Ed & Mully's at Whitefish Mountain Resort

Full Bar, Lunch, & Après Ski

\$ LD

406-862-2900 • In The Village at Whitefish Mountain Resort • [skiwhitefish.com](http://skiwhitefish.com)





## Firebrand Restaurant

Cross-Culturally Inspired Cuisine,  
Craft Beverages



\$\$ \$\$\$ BLD ☎ 🍸 🍷 🔑 📶 🎵 🕒 🪑 🍷

Ignite your senses in the Firebrand Restaurant's contemporary environment, serving breakfast (seasonally) and dinner nightly with a full bar and live music on select evenings. The Coffee Bar offers specialty drinks and grab 'n go items. Experience the Whitefish downtown vibe with happy hour food and drink specials daily.

406-863-1919 • 650 East Third Street • [firebrandhotel.com/eat-drink](http://firebrandhotel.com/eat-drink)

## Fleur Bake Shop

Bakery, Breakfast, Dessert, Espresso, Breads

\$ BLD 🍷 📶 🪑 🕒

406-730-8486 • 103 Central Avenue • [fleurbakeshop.com](http://fleurbakeshop.com)

## Folklore Coffee

Coffee. Pastries. People.

\$ BL 📶 🕒

406-730-1020 • 403 E. 2nd St, Ste 104 • [folklorecoffeemt.com](http://folklorecoffeemt.com)



## Herb & Omni

Herbivore, Omnivore, Elevated, Local,  
Music, Entertainment



\$\$\$ D ☎ 🍷 🍸 🔑 📶 🎵 🍷 🪑

Welcome to Herb & Omni, inside 101 Central. Our purpose is to nourish herbivores and omnivores with real food sourced as close to home as possible from purveyors who hold their ingredients in the highest regard.

406-862-8150 • 101 Central Avenue • [101centralwhitefish.com](http://101centralwhitefish.com)

## Indah Sushi

Fresh Fusion Sushi Eatery and Sake Bar

\$\$ D 🍷 🍷 📶 🪑 🕒 🪑

406-730-6001 • 250 E. 2nd Street • [indahsushi.com](http://indahsushi.com)

## Last Chair Kitchen & Bar

Casual Creative Cuisine, Craft Beer & Wine

\$\$ D ☎ 🍷 🍷 📶 🪑 🕒

406-863-5455 • 1705 E Lakeshore Drive • [lastchairkitchenandbar.com](http://lastchairkitchenandbar.com)



## Latitude 48 Bistro + Red Room Lounge

Artful Fusion of Worldly Cuisine



\$\$ D ☎ 🍸 📶 🎵 🍷 🕒 🪑

Latitude 48 represents an artful fusion of traditional and contemporary trends, both through our worldly cuisine and our atmosphere. Throw in an international wine list with over 20 wines by the glass and you've got a dining experience destined to entertain your senses. Downstairs at the Red Room, you'll find a plush lounge where you can sit back and enjoy a signature martini, small plates, fire-roasted pizza, a glass of wine or craft beer.

406-863-2323 • 147 Central Avenue • [latitude48bistro.com](http://latitude48bistro.com)



# EAT & DRINK



**GROUSE MOUNTAIN  
LODGE**

## Logan's Bar & Grill

*Classic Cuisine with Montana Flair*



\$\$ BLD 🍸 🍷 🗝️ 🪑 🕒 🍷

Located just off the grand lobby in Grouse Mountain Lodge, Logan's boasts an award-winning culinary team with a unique take on traditional Montana fare. The grill features a warm and casual atmosphere, towering stone fireplace and heated outdoor patio and fire pit. Overlooking the 18th hole of the Whitefish Lake Golf Course you won't find a more relaxing way to top off an adventurous day of exploring Northwest Montana.

**406-862-3000 • 2 Fairway Drive • grousemountainlodge.com/logans**

## Loula's Cafe

*Whitefish's Classic Bistro with  
Award-winning Pies*

\$ \$\$ BL 📞 🍷 📶 🏆 🕒 🍷

**406-862-5614 • 300 East 2nd Street, #1 • whitefishrestaurant.com**



## MacKenzie River Pizza

*Best Pie in the Big Sky*



\$ LD 🍷 🕒

Offering an incredible array of delectable dishes, always flavorful, fresh and served up in heaping portions. The acclaimed gourmet pizzas are offered on a variety of crusts – original, thin and gluten-free. Other items include hearty sandwiches and wraps, fresh salads, pastas and the newest menu addition, scratch-made bowls. To complement the menu choices, select from a variety of local and regional craft brews and fine wines.

**406-862-6601 • 9 Central Avenue • mackenzieriverpizza.com**



## Montana Coffee Traders

*Coffee Shop with Breakfast, Lunch & Gift Shop*



\$ 📶 🪑 🕒

Since 1981, Montana Coffee Traders has been roasting coffee just south of Whitefish, Montana. We welcome you to our cafes where you will find a wide selection of coffees, espresso drinks, and quick meals. You can plan your adventures while relaxing in the café or order online for pick up from our Downtown Whitefish location.

**406-862-7667 • 110 Central Ave (Cafe) • coffeetraders.com**

**406-862-7628 • 5810 Hwy 93 S (Roastery & Cafe)**

## Piggyback BBQ

*BBQ Ribs, Sandwiches, Salads & Catering*

\$ BLD 📞 🍷 🍷 📶 🪑 🕒

**406-863-9895 • 102 Wisconsin Avenue • piggybackbbq.com**

## The Summit House Restaurant & Bar at Whitefish Mountain Resort

*Montana's Only Mountaintop Restaurant & Bar*

\$ BL 🍸 📶 🕒 🪑 🍷

**406-862-2900 • In The Summit House at Whitefish Mountain Resort • skiwhitefish.com**

## Sweet Peaks Ice Cream

*Handcrafted Local Ice Cream*

\$ LD 🍷 📶 🪑 🕒 🚗

**406-862-4668 • 419 1/2 Third Street • sweetpeaksicecream.com**

## Swift Creek Cafe

*A Soulful Expression of Family Crafts*

\$\$ BL 🍷 📶 🕒 🪑

**406-862-9136 • 307 E. 2nd Street • swiftcreekcafe.com**





## Vibrant Roots Organic

Organic Juice, Jun-Kombucha, Ginger Beer  
& More



Women owned and operated, we offer organic, gut healthy products that help you shine from the inside out. Our vibrant Jun-Kombucha selection is brewed with green tea and local Montana Honey. We offer organic cold-press juices, in house, that are sourced as locally as possible and completely unpasteurized, preserving the highest nutrient content. Come visit our self-serve shop to find all that and more!

[vibrantroots.com](http://vibrantroots.com) • 1820 Baker Avenue • [info@vibrantroots.com](mailto:info@vibrantroots.com)

## Wasabi Sushi Bar & Ginger Grill

Sushi and Grill Cuisine, Contemporary Flair



406-863-9283 • 419 Second Street East • [wasabimt.com](http://wasabimt.com)

## Wild Coffee Company

Coffee, Cafe, Grab 'N' Go, Pastries



406-730-2833 • 309 Central Avenue • [wildcoffeecompanymt.com](http://wildcoffeecompanymt.com)



Photo © Drew Silvers, Whitefish Mountain Resort Base Lodge



# TREASURE IT.

Recreate Responsibly

Experience Western Montana's mesmerizing landscape, rich history, arts and culture, world-class outdoor recreation and authentic small towns. Glacier Country is a place of adventure. A place to treasure.

[RecreateResponsiblyMT.com](https://RecreateResponsiblyMT.com)

[GlacierMT.com](https://GlacierMT.com) | [#GlacierMT](https://www.instagram.com/GlacierMT)

[f](#) [t](#) [p](#) [i](#) [y](#) [d](#) [i](#)



RECREATE  
RESPONSIBLY





VOTED BEST DISPENSARY IN WHITEFISH & THE FLATHEAD VALLEY

# *Light Up The North*



SCAN FOR SHOP & SOCIAL  
[www.tamarackcannabis.com](http://www.tamarackcannabis.com)

  
**Tamarack**  
cannabis

OPEN EVERY DAY 11-7  
WHITEFISH | KALISPELL



# RULES TO ENJOY



Photo © Glacierworld.com, Unleashed: A Winery

## BREWERIES, WINERIES & DISTILLERIES

Distilleries and breweries throughout the state of Montana have different rules for alcohol consumption compared to restaurants and bars. Because this can vary by type of establishment, it's best to inquire about the rules when you arrive at a place of business. One thing rings true for all places that sell alcohol – all reserve the right to refuse service to intoxicated people.

### MICROBREWERIES

Montana breweries can serve up to 48 ounces of beer per person, per day until 8 p.m., and it may be consumed on premise until 9 p.m. Growlers can also be filled until 9 p.m. but must be consumed off premises.

### CRAFT DISTILLERIES

Montana distilleries can serve up to two ounces of liquor per customer, per day which must be consumed before 8 p.m. Additionally, each customer is allowed to purchase a maximum of 1.75L per person, per day and must be consumed off premises.

### WINERIES

Wineries have general alcohol rules with no daily ounce limit.

## RECREATIONAL MARIJUANA: WHAT YOU NEED TO KNOW

Adults 21 years or older can now purchase and consume marijuana in the state of Montana. As this is new for Montana, here are some things you need to know:

- + Consumption of marijuana is not allowed in public. This means outdoor and enclosed public spaces.
- + Consumption is legal in private accommodations and private property with owner's permission. Be sure to check with the place you're staying – hotel, motel, vacation house, etc. – to see if they allow consumption on their property.
- + Marijuana is still prohibited on all federal lands and waters, including Glacier National Park, Flathead National Forest, and Glacier Park International Airport.
- + If you buy it here, be sure to consume it here or dispose of it properly before you leave. Crossing state lines or flying with marijuana is illegal.

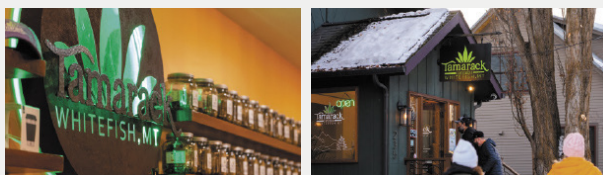
Driving Under The Influence (DUI) laws apply to marijuana and alcohol. Don't do it.



Photo © Tamarack Cannabis

**Big Mountain Botanicals***Cannabis Dispensary*5932 Hwy 93 S • [BigMountainBotanicals.com](http://BigMountainBotanicals.com)**Bonsai Brewing Project***Brewery, Kitchen, Public House, Beer Garden*406-730-1717 • 549 Wisconsin Avenue • [bonsaibrew.com](http://bonsaibrew.com)**CANNABIS COUNTER****Cannabis Counter***Recreational dispensary, all experience levels welcome!*

The Cannabis Counter is an organic craft cannabis dispensary. We pride ourselves in creating a welcoming environment for everyone—from the occasional edible eater all the way to the cannabis connoisseur! All of our cannabis is Clean Green Certified and locally grown in organic living soil, with no chemicals or pesticides ever!

406-201-2222 • 1200 Voerman Road • 404 E 1st Street (coming Winter 2023)  
[cannabiscounter.com](http://cannabiscounter.com)**Spotted Bear Spirits***Enjoy Hand-Crafted Spirits, Fresh Cocktails & Bottle Sales*406-730-2436 • 503 Railway Street, Suite A • [spottedbearsprits.com](http://spottedbearsprits.com)**Tamarack Cannabis***Premium Cannabis Dispensary & Glass Shop, Voted Best of Whitefish and the Flathead*

Voted Best Dispensary in Whitefish and the Flathead Valley, Tamarack Cannabis is the premiere seed-to-sale dispensary providing organic, top-shelf cannabis products since 2009. Tamarack Cannabis won top honors in Whitefish in 2023 for Best Local Product, Best Customer Service, Most Philanthropic Business and Best Employer, among all business types.

406-730-2599 • 235 E. 1st Street, Whitefish  
151 Business Center Loop, Suite C, Kalispell • [tamarackcannabis.com](http://tamarackcannabis.com)**Unleashed: A Winery***Winery & Tasting Room*

Unleashed is a full production winery, tasting room, and gathering space located in downtown Whitefish. We offer locally-crafted wines inspired by the flavors of our mountain town. Enjoy wine tastings, small bites, and a chic, comfortable environment. We offer an assortment of red, white, and flavor-infused wines.

406-730-8558 • 20 Spokane Avenue • [unleashedwinery.com](http://unleashedwinery.com)**Whitefish Liquor Store***Fine Wines and Spirits*406-862-4470 • 239 Baker Avenue • [whitefishliquor.com](http://whitefishliquor.com)

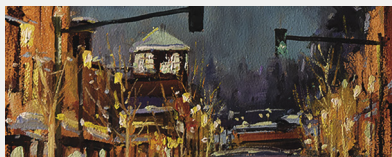


# NEED CASH?

FIND ATM LOCATION ON  
THE MAP ON PAGES 58-59.

## First Interstate Bank

*Neighbors Helping Neighbors*  
406-863-8888; 306 Spokane Avenue  
firstinterstatebank.com

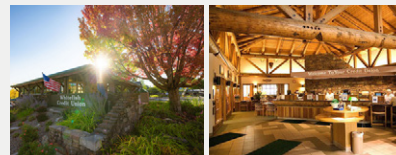


## Glacier Bank

**Committed to Supporting Our Community**

Glacier Bank is a strong community bank founded in the Flathead Valley. With access to 17 Divisions across eight states, convenience is right at your fingertips. We believe in first names, lasting relationships, and being there when you need us most. Stop in and see us today!

**406-863-6300; 319 East 2nd Street**  
glacierbank.com



## Whitefish Credit Union

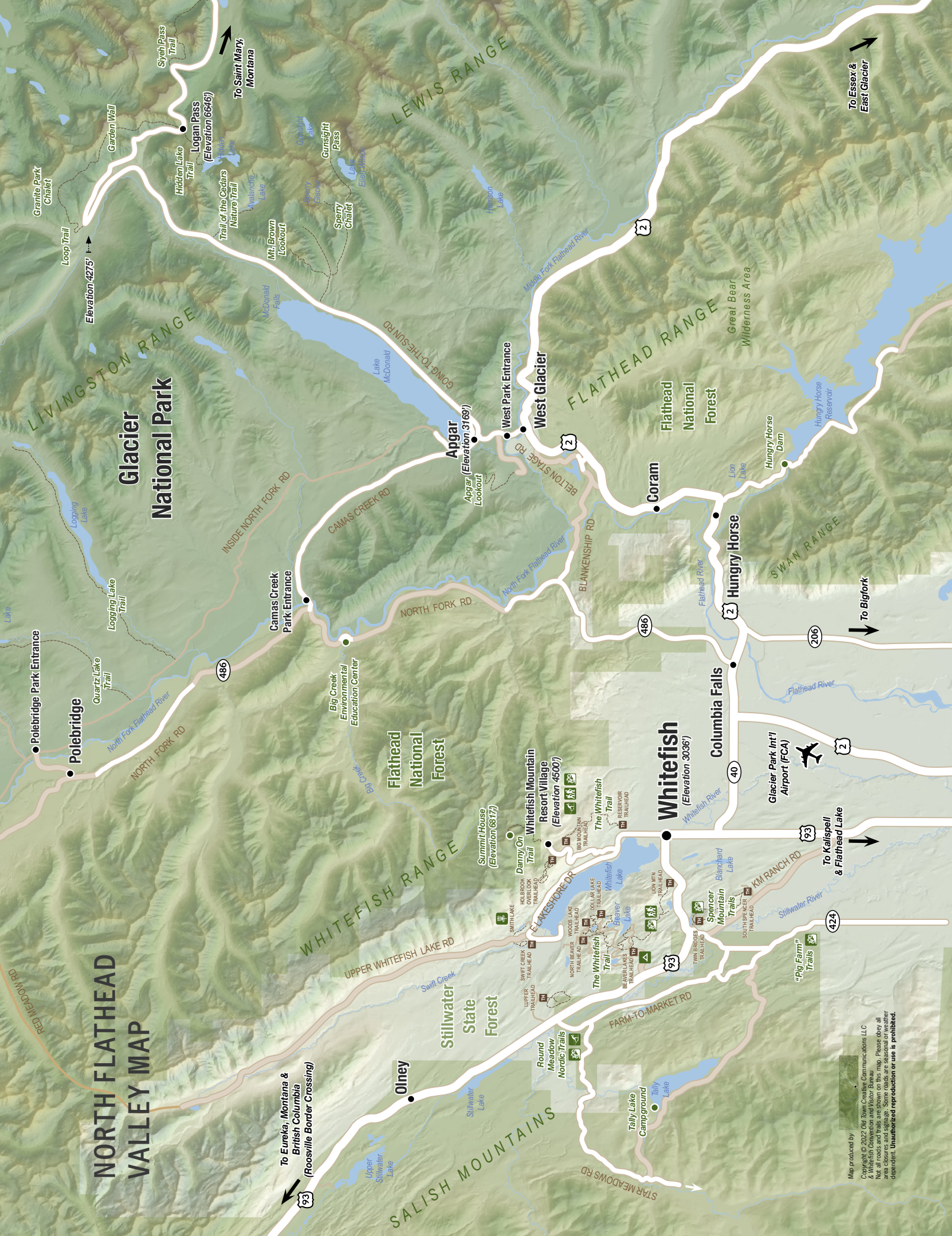
**Mortgages, Vehicle Loans, Online Checking**

Welcome to Whitefish Credit Union, where your financial well-being is top priority. Our competitive dividend rate, combined with our commitment to security, ensure your money is in good hands. With 7 locations across Montana, we're conveniently located and dedicated to serving our members. Join us today and experience the difference!

**406-862-3525; 300 Baker Avenue**  
whitefishcu.com







# Glacier National Park

## NORTH FLATHEAD VALLEY MAP

Map produced by  
Copyright © 2022 Old Town Creative Communications LLC  
& Whitefish Convention and Visitor Bureau  
Not all roads and trails are shown on this map. Please obey all  
posted signs and regulations. Map is for informational purposes only.  
Unauthorized reproduction or use is prohibited.



# GETTING HERE IS THE EASY PART



Photo © Brian Schott, Whitefish Railway Depot



Photo © Brian Schott, The S.N.O.W. Bus

Whitefish is one of the closest mountain towns to a major airport. Direct flights from numerous major cities and carriers into Glacier Park International Airport (FCA) make getting to Whitefish a breeze. Once you arrive at Glacier Park International Airport, you're only 15 minutes from town.

Travelers can also opt for a scenic rail experience aboard the Amtrak Empire Builder, which arrives at the historic Whitefish Railway Depot connecting cities like Chicago, Minneapolis, Seattle, and Portland. For those who prefer road trips, the drive to Whitefish is a picturesque journey through some of North America's most breathtaking landscapes. Easy-to-navigate roads wind their way to this mountain paradise, inviting travelers to savor the scenic beauty along the way.

## **S.N.O.W. BUS**

During both winter and summer seasons, the S.N.O.W. Bus offers free transportation connecting the City of Whitefish and Whitefish Mountain Resort. The bus stops at many lodges, grocery stores, restaurants, Central Avenue and other locations throughout town. For the current schedule and ride map visit: [bigmtncommercial.org](http://bigmtncommercial.org).





### Amtrak

Ride Amtrak Empire Builder® to Whitefish!  
1-800-USA-RAIL; 500 Depot Street  
amtrak.com

### Budget Rent a Car

Compact to Full-Size Vehicles  
406-862-8170 or 800-218-7992  
803 Spokane Avenue; budget.com

### Dollar Rent-A-Car

Vehicles and Vans of All Sizes.  
Delivery and pickup available.  
406-892-0009; 5506 Hwy 2 W  
dollar.com

### Glacier Park International Airport

Gateway to Northwest Montana and the Canadian  
Rockies; 406-257-5994; 4170 Hwy 2 East  
iflyglacier.com

### S.N.O.W. Bus

Free Shuttle Between Whitefish and Whitefish  
Mountain Resort  
bigmtnccommercial.org

### Whitefish Outfitters & Tours

Tour company & equipment rentals in downtown  
Whitefish. 406-212-0080; 541 Spokane Ave.  
whitefishoutfitters.com

## DRIVING

### DISTANCE & TIMES TO WHITEFISH

Driving from	mi/km	time
Glacier National Park	25/40	30 min
Missoula, Montana	136/221	2.5 h
Spokane, Washington	252/409	4.5 h
Bozeman, Montana	342/556	5.5 h
Calgary, Alberta	286/457	5 h
Yellowstone Nat'l Park	403/655	7 h
Edmonton, Alberta	440/704	8 h
Seattle, Washington	530/861	8.5 h



### CUSTOMS & BORDER CROSSING

US Customs: cbp.gov

Canada Border Services: cbsa.gc.ca

### ★ AIRPORT CODE: FCA

Glacier Park Int'l Airport, Kalispell  
Just 15 minutes from Whitefish

— NON-STOP FLIGHT

-- SEASONAL NON-STOP FLIGHTS

### AMTRAK CODE: WFH

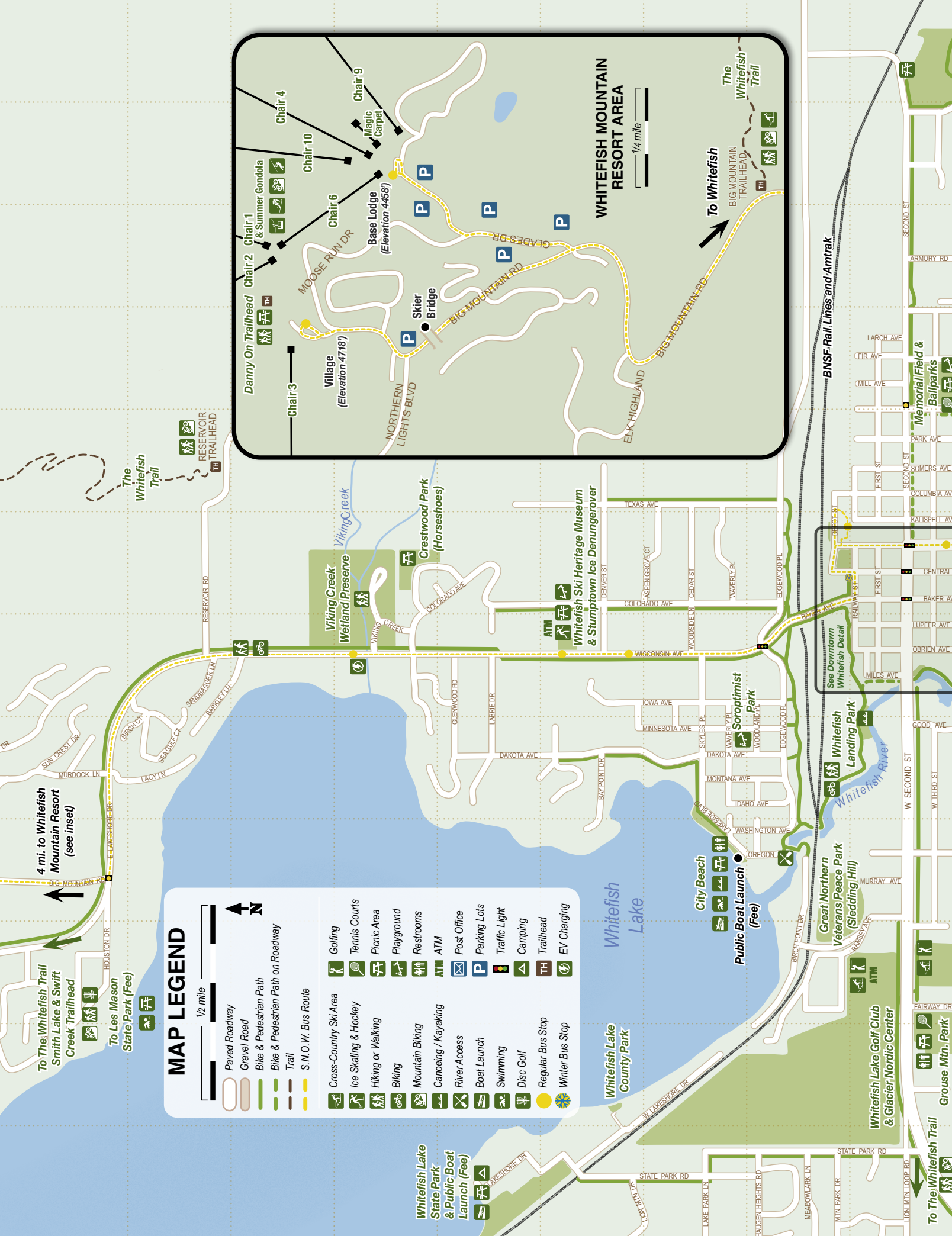
Arrives at the historic Whitefish  
Train Depot



### TRAVEL RESOURCES

24-Hour Road Conditions Available  
statewide: Call 511 or visit  
mdt.mt.gov/travinfo





## MAP LEGEND



Paved Roadway

Gravel Road

Bike & Pedestrian Path

Bike & Pedestrian Path on Roadway

Trail

S.N.O.W. Bus Route

Cross-Country Ski Area

Ice Skating & Hockey

Hiking or Walking

Biking

Mountain Biking

Canoeing / Kayaking

River Access

Boat Launch

Swimming

Disc Golf

Regular Bus Stop

Winter Bus Stop

Golfing

Tennis Courts

Picnic Area

Playground

Restrooms

ATM

Post Office

Parking Lots

Traffic Light

Camping

Trailhead

EV Charging

Golfing

Tennis Courts

Picnic Area

Playground

Restrooms

ATM

Post Office

Parking Lots

Traffic Light

Camping

Trailhead

EV Charging

Trailhead

EV Charging

Trailhead

EV Charging

Trailhead

EV Charging

Trailhead

EV Charging

Trailhead

EV Charging

Trailhead

EV Charging

Trailhead

EV Charging

Trailhead

EV Charging

Trailhead

EV Charging

Trailhead

EV Charging

Trailhead

EV Charging









# This must be the place

for your four seasons of adventure.



**WHITEFISH**  
MOUNTAIN RESORT  
WHITEFISH, MONTANA

**#SKIWHITEFISH**

SKIWHITEFISH.COM | 877-SKI-FISH

Partially Located on National Forest Lands  
Photos © GlacierWorld.com