

Area Maps | Activities | Restaurants | Lodging

WHITEFISH

EXPLOREWHITEFISH.COM MONTANA

FOR THE LOVE
OF THE WILD

WELCOME TO
WHITEFISH, MONTANA

2025
OFFICIAL WHITEFISH
TRAVEL GUIDE

TRAVEL GUIDE 2025

WHITEFISH
MONTANA

EXPLOREWHITEFISH.COM

WHITEFISH MONTANA

SEASONS	2
EXPLORE	10
BE WELL	18
EAT & DRINK	22
SHOP	34
STAY	38
DOG-FRIENDLY TRAVEL	47
ARTS & CULTURE	48
EVENTS CALENDAR	51
PLAN A MEETING OR EVENT	54
TRAVEL	60
MAPS	62

Slow down, have a friendly conversation, and enjoy this rare and magical place.

DEAR TRAVELER,

Welcome to Whitefish, one of the abiding and authentic mountain communities in the West. We are a small town filled with people who care about nature and a close-knit community. Our townspeople unite around community strength, our passion for recreation, and protecting this place for future generations.

Thank you for choosing to vacation here, in our hometown. We invite you to experience our community, our culture, and our “Love of the Wild”— and we encourage you to visit during our less traveled seasons. “Be a Friend of the Fish” and support our community values.

Our community is committed to reducing impacts. During your visit, please help protect our fragile landscape and wildlife. Leave no trace, pack out what you pack in, and treat our town with care.

When you can, please walk or bike. Our trail system links over 22 miles for access to the downtown, the river, the lake, and mountain. The urban trail network also connects with the Whitefish Trail, a 47-mile gateway to beautiful forests, prime wildlife habitat, sweeping vistas, pristine lakes, and inter-connected recreation areas.

Take a stroll downtown and visit our local shops and restaurants. Our locally-owned businesses are the backbone of our town and your patronage helps provide year-round livable wages. A smile and a tip go a long way for our local workers who add so much energy and character here.


Our community values the dignity, diversity, and inclusion of all locals and visitors. Generations have rolled up their sleeves and worked hard to create this vibrant town. Welcome to Whitefish! I encourage you to slow down, have a friendly conversation, and enjoy this rare and magical place.

Mayor John M. Muhlfeld

WHITEFISH CONVENTION & VISITORS BUREAU
100 Second Street East, Suite 305
877-862-3548 (Visitor Information)
406-862-3395 (Administrative)
info@explorewwhitefish.com

- + Cover photo © Justin Kauffman, *Biker looking out over the Flathead Valley*
- + Photo right © Brian Schott, Whitefish
- + Photos throughout the guide that reference MOTBD are courtesy of Montana Office of Tourism Business Development (formerly Visit Montana)

© 2024 Whitefish Convention and Visitors Bureau (Explore Whitefish). This publication was developed by Fir & Larch LLC under agreement with the Whitefish Convention and Visitors Bureau. Each property and service described in this publication are independently owned or operated and are members of the Whitefish Convention and Visitors Bureau, a non-profit member organization. Please help support our members! Your comments and feedback are welcome. Please email us at info@explorewwhitefish.com. Unauthorized reproduction or use of this publication in whole or part is not permitted. Printed in U.S.A. for domestic and international distribution. v12092425000

 [explorewwhitefish](#)

 [Explore Whitefish](#)



Aerial view of Whitefish, Whitefish River, and Whitefish Lake with views of the mountains of the Whitefish Range in the distance



Looking out over the Flathead Valley while skiing at Whitefish Mountain Resort



Cross-country skiing near the southern tip of Glacier National Park at the Essex Ski Trail Complex



Snowshoeing in Glacier National Park



Chef Earl Reynolds, right, at Whitefish Mountain Resort

WINTER IN WHITEFISH IS PURE MAGIC. The peaks of Glacier National Park serve as the perfect backdrop to world-class skiing and snowboarding at Whitefish Mountain Resort. If you're looking for other winter adventures around town, Whitefish offers great nordic skiing trails, snowshoeing, ice skating, winter hiking, and fat biking around town. Enjoy the freshly fallen snow from the warmth of the indoors, where you can savor some of the best dining, shopping, and art experiences around.

I notice the light coming from Big Mountain and the low-hanging clouds surrounding it have a unique glow—a glow suspicious of an inversion.

WINTER ADVENTURES IN AND AROUND WHITEFISH

- + Discover new adventures with **DREAM Adaptive — recreation opportunities for all abilities**
- + **Ski or snowboard at Whitefish Mountain Resort**
- + **Ice skate at the Stumptown Ice Den**
- + **Explore with a guide: snowmobile in the mountains, go on a cat skiing adventure, or snowshoe in Glacier National Park**
- + **Take a wintry horse-drawn sleigh ride**

A PERFECT WINTERS DAY

~ by Chef Earl Reynolds, a James Beard Award nominee

It is the third and final day of a blower storm cycle and there are 8 inches of fresh powder being reported at the summit of Whitefish Mountain Resort. I quickly shuffle my gear into the truck and begin to drive north with a breakfast taco soaked in hot sauce one hand and a hot coffee in the other. I notice the light coming from Big Mountain and the low-hanging clouds surrounding it have a unique glow—a glow suspicious of an inversion. I hop on chair one and sure enough...BOOM! I am above the clouds at the third lift tower, full-on inversion! After basking in the glory of the sun, it is time to get to business. It doesn't take long to meet up with a crew of random friends to bop and bash weightlessly through the forest. Nothing but hoots and hollers filling the snowy mountain for hours and hours!

After a full day of shredding, I love a nice beverage and a big basket of curly fries on the summit house deck before the descent back to town. It hits just right especially when you're above the clouds on cloud nine. Once I am back in town, I hit Spotted Bear Spirits where I treat myself to a cocktail called "Neighbor to the North"—the cherry on top of a brilliant day of riding. Finally, I come home to the cozy aromas of beef stew that have been slowly simmering in a crockpot all day.





Walking in downtown Whitefish with Big Mountain in the distance

SPRING IS THE SECRET SEASON in Whitefish. Snowplows push their way up Glacier National Park's Going-to-the-Sun Road, allowing for scenic bike rides and casual hikes before the famous road opens to vehicle traffic. The waterfalls are in full action and the motor-free road provides a quiet getaway into the heart of the Park. Back in town, the river is ready for a paddleboard or kayak float and the Whitefish Trail is in prime condition for hiking and mountain biking.

LOCAL SPRING RECREATION TIPS

- + **Spring snow and avalanches can still be a concern in many parts of the mountains. Check weather conditions before heading out, and check in with local guides, shops, or reporting organizations such as Glacier National Park (nps.gov/glac) or Flathead Avalanche Center (flatheadavalanche.org).**
- + **Weather forecasts for Whitefish will not be the same for other parts of the surrounding region—especially in the mountains where you can experience very different weather with more wind, cooler temperatures, and snow where rain may have been forecasted.**
- + **Bring extra clothing, layers, and gloves as weather can change quickly.**
- + **Avoid riding bikes on area trails during wet and muddy conditions—doing so can create widened trails, water channels, and cause excessive erosion.**

Spring is a time of renewal, with each new bud that grows from the wet soil, and it's my favorite season to sit back, admire the beauty, and reflect on the year ahead.

A PERFECT SPRING DAY

~ by Lilian Bassett, *Explore Whitefish*

As I wake up on a crisp spring morning, the air is still cool and the landscape a bright kelly green, I take in a deep breath and can smell dew drops sitting on freshly cut grass outside. Spring is a time of renewal, with each new bud that grows from the wet soil, and it's my favorite season to sit back, admire the beauty, and reflect on the year ahead.

My husband and I love to spend any day, no matter the season, with a cup of fantastic coffee and a buttery pastry from a personal favorite spot—Fleur Bake Shop. No matter the weather, hitting the Whitefish River Trail while sipping our morning joe is the perfect way to get our day started.

In the spring, the famous Going-to-the-Sun Road is closed to vehicles and open to hikers and bikers. Driving Going-to-the-Sun Road is a bucket list item all on its own. But feeling the wind, smelling fresh air, and taking in all the beauty from two wheels is other-worldly. There are epic mountain views, blooming wildflowers, and babbling McDonald Creek as we climb, climb, climb to the top. The view of the valley below and surrounding peaks brings a sense of ease and peace.

Once we get back to the car, it's time to head into town for drinks and dinner. We usually start our evening with an après of some sort, leading us to The Redroom Lounge in the basement of Latitude48. Here, we indulge in small plates and a cocktail, my personal favorites being the Parmesan fries with truffle oil and the Strawberry 75. After an early evening spent sharing memories, laughing, and planning the next time we can be in Glacier National Park, we decide it's dinner time and head to Beldi, a Mediterranean delight in downtown Whitefish.

When our day is done, our legs and feet tired, bellies full, and thoughts of dreams start to creep in, we let ourselves relax as we remember the beautiful spring day we were lucky enough to experience right out our back door.

**Pro-tip: It is important to know that Glacier National Park road crew assesses road conditions and plow status daily to determine where hikers and bikers need to stop and turn around. This is for your safety! Wild, backcountry, alpine highways in the spring in Montana can be complicated. The road could be closed due to falling debris, wildlife, snowfall, road assembly—the list goes on. Always travel prepared. Bring bear spray, extra layers, comfortable clothing and shoes, and check conditions prior to starting your adventure. This will ensure a great time will be had by all with minimal disappointments or surprises!*

SPRING-TIME FAVORITES

- + **Bike the Going-to-the-Sun Road in Glacier National Park**
- + **Head for low-elevation hikes (to stay out of the snow that still lingers on the mountain tops) around the region in places such as:**
 - **The Whitefish Trail**
 - **Flathead National Forest**
 - **Glacier National Park**



Paddling on Bowman Lake in Glacier National Park



Stargazing in Glacier National Park—an International Dark Sky Park



Launching paddleboards at Whitefish Lake's City Beach

MAXIMIZE YOUR TIME exploring Whitefish where seemingly endless daylight hours provide ample opportunities to explore. Surrounded by millions of acres of protected state and federal lands, this charming town offers an extensive network of scenic roads and trails, inviting you to embark on unforgettable adventures.

For those who love the water, Whitefish boasts an array of lakes and rivers, perfect for kayaking, paddleboarding, rafting, and fishing. Additionally, after your day on the water immerse yourself in the local culture with live music and festivals that add a lively and entertaining touch to your fun-filled days.

MAXIMIZE YOUR ENJOYMENT

- + **Plan ahead: secure reservations early for lodging, dining and activities.**
- + **Try a variety of activities: embrace the diversity of outdoor adventures, from hiking and biking to swimming and paddleboarding.**
- + **Parking tips: be prepared to walk a short distance to reach some popular spots, especially during peak times.**
- + **Glacier National Park: check out page 61 of this guide for details on admission and vehicle reservations, or visit [NPS.org](https://www.nps.org) for up-to-date information.**
- + **Work with a guide: local guides offer valuable insights, hidden gems, and insider knowledge that can make your trip even more special.**
- + **Slow down and enjoy the ride: embrace the relaxed pace of our town and take in every moment of your summer escape.**
- + **Be flexible: there are so many places to enjoy. If you research alternatives to your drives, hikes, activities, and even restaurants, you're sure to have a great time, no matter what the day brings.**

A PERFECT SUMMER DAY

~ by Julie Mullins, *Explore Whitefish*

An ideal summer day in Whitefish, Montana begins with a hearty breakfast and a dark roast at Swift Creek Café. My usual is their renowned Turkish eggs—perfectly poached eggs served over whipped yogurt, topped with chili butter. Locally owned and operated by Christian Moreno, the café provides a cozy ambiance, using only fresh, locally-sourced ingredients to create the perfect start for an adventure-filled day.

Before the heat of the day settles in, I'm on the move, hiking one of my favorite local trails: Whitefish's Smith Lake Trail. The scent of pines and the natural beauty of the area is transformational, allowing my body and mind to unwind after a busy week. The trail is moderately challenging and offers a peaceful, scenic route through lush forests and pristine alpine terrain. The crisp morning air and breathtaking views make this hike a truly unforgettable experience.

After the hike, I drive back into town, and an almost contagious buzz rises from Whitefish Lake. The lake shimmers in the sunlight, and without hesitation, I've decided it will be another idyllic afternoon paddle boarding and picnicking at Les Mason State Park. *A tip for visitors: Kayak and paddle board rentals are available at Whitefish City Beach as well as Les Mason and Whitefish Lake State Parks.

As I glide across the lake's crystal-clear waters, I'm constantly amazed by the panoramic views of the surrounding mountains and forests. The tranquility of the lake offers a serene escape from the bustle of everyday life. Today, I paddle north to avoid some of the summer boat traffic and am rewarded with the sight of a mother deer and her fawn enjoying a cool drink along the shoreline.

As the day cools, I meet some friends at The Belvedere, Whitefish's favorite new rooftop bar, for a well-deserved summer cocktail... or two. I take a moment to soak in the stunning views of the town and the mountains beyond. Below, the streets hum with the energy of pedestrians and the lively tunes from Whitefish's new outdoor music and food venue, Thirty-Eight.

Tonight is special. My friends and I planned weeks in advance to secure a reservation at Herb & Omni, one of Whitefish's finest dining establishments. Chef Earl James Reynolds, a James Beard Award nominee, always delivers an exceptional meal. His creative menu, which embraces the flavors of Montana wild game and farm-to-table ingredients, never disappoints.

With our bellies full, the music pouring out from venues along Central Avenue pulls us in. Feet tapping, we're off to dance and laugh—because the night is still young!



Looking up at Reynolds Creek, Logan Pass, and Clements Mountain while driving along the Going-to-the-Sun Road



Taking in the fall colors at Lake McDonald, Glacier National Park



Walking along the paved bike and pedestrian paths in Whitefish



Biking through the larch trees in Flathead National Forest

FALL IS ONE OF THE BEST TIMES to visit Whitefish, and nature's wonders beckon to be discovered. With serene trails waiting to be explored and rivers and lakes inviting you for a paddle, you'll often find these beautiful landscapes all to yourself.

Witness the mesmerizing transformation of the larch trees as they turn a brilliant shade of gold. As a bonus, the high peaks receive a dusting of snow, creating a breathtaking backdrop for your adventures.

Whether you're hiking, biking, or paddling around Whitefish and Glacier National Park, the fall scenery will leave you in awe.

FALL ADVENTURE MUSTS

- + Hike in Glacier National Park or bike the Going-to-the-Sun Road
- + Mountain bike The Whitefish Trail
- + Paddle the Whitefish River or one of the many clear mountain lakes
- + Horseback riding at nearby ranches and outfitters
- + Take a guided fly fishing trip down the Flathead River

A PERFECT FALL DAY

~ by Zak Anderson, *Explore Whitefish*

As a long-time local of Whitefish, I can say there's nothing quite like a perfect fall day here. It kicks off with breakfast at Amazing Crepes, where I meet up with friends. We dig into some tasty sweet and savory crepes while catching up, knowing that a day of adventure lies ahead. After breakfast, we gear up and head to The Whitefish Trails Reservoir trailhead for some mountain biking. The cool autumn breeze and vibrant colors of the larch trees (sometimes referred to as tamarack trees) make the ride unforgettable, and the views overlooking the valley never get old.

After the ride, my wife, kid, and I grab our paddleboards and head to the Whitefish River. We like to put in at Kay Beller Park, right on Second Street, and paddle up the river toward Whitefish Lake. It's a peaceful stretch of water, and the fall colors reflecting off the river are stunning. As we paddle, we're constantly reminded of the beauty that surrounds us—especially the views of Whitefish Mountain Resort in the distance. It's hard to believe ski season is just a few months away.

Spending the afternoon on the river with the family is one of those small joys that makes living here so special. It's a calm, relaxing break from the busyness of life. After we finish paddling, we pop up the street for sushi at Wasabi. It's the perfect mix of outdoor fun, family time, and good food—all in the heart of Whitefish.



Hiking in Glacier National Park

AS THE EARTH TURNS, each season of Whitefish brings a different mood to the mind and feeling to the body across unspoiled, spectacular nature. Bright hues of autumn pop as the larch trees go gold. The crisp white of winter snaps. Blues and greens of spring growth and water flow into summer's long, lazy days. Lakes, rivers, woods, and mountains call to us for adventure beyond the streets and shops of a vibrant, charming town. After exhilaration by day, there is more life to celebrate under the warm cover of town, where arts, food, and music expand the landscapes of our minds and souls.

~ by Brian Schott



Cycling the Going-to-the-Sun Road in Glacier National Park



Horseback riding



Snowmobiling tours with Whitefish Marine



Walking the paved paths around Whitefish



Guided fishing trips on the Flathead River



Paddling on Whitefish Lake



Bear grass along the Danny On Trail

FOR THE LOVE OF THE WILD

QUICK PICK BIKE RIDES

- + Spring scenic alpine road biking on the *Going-to-the-Sun Road*
- + Lift-served downhill mountain biking on *Kashmir* at Whitefish Mountain Resort
- + Multi-use, all-skill-levels biking on the *Haskill Basin* section of *The Whitefish Trail*
- + Intermediate, freeride trail on *Otter Pop* at Spencer Mountain
- + Paved multi-use, all-skill-level bike and pedestrian trails within Whitefish
- + Gravel riding on *Upper Whitefish Lake Road*

UNDER A SHINING SUN

Whitefish Lake, Whitefish River, and Whitefish Mountain Resort anchor our community in nature and provide adventures in the water, in the woods, and on the slopes of a Big Mountain. A 36-hole golf course in the summer transforms into a cross-country skier's playland in the winter. Horse-drawn wagons trade wheels for sleigh-runners as the

cotton candy clouds of summer morph into the powder snow of a warm winter paradise. Cyclists enjoy a vast network of trails around town or test their mettle on the downhill berms of the mountain. Water lovers paddle or kayak from Whitefish Lake down the lazy curves of the Whitefish River—or just kick back and relax for a swim and a picnic along the shores of Whitefish Lake.

UNDER COVER (OR ON A RAINY DAY)

While natural wonders anchor our mountain community, the downtown nurtures residents and visitors, where a stroll on Central Avenue reveals art galleries, coffee shops, a local burger bar and grill, or a five-star restaurant. Live music fills the intimate spaces of small stages or expands across large theaters. Whitefish is a mecca for big-time culture under the comfort of a community that welcomes guests who hold the value of protecting fragile places for future generations to enjoy. Two theater companies run productions throughout the seasons, while local chefs put on a show of taste, flavor, and flair. There is a harmony in Whitefish and a standard of excellence from local craftspeople

who believe that art is shaped in every latte, every crepe, and every tiny ounce of flavor that goes into the ingredients of a town like Whitefish. *Be sure to check out the other sections of this guide for more to do in and around town.*

QUICK PICK DAY HIKES

- + *The Danny On Trail* at Whitefish Mountain Resort
- + *Beaver Lakes Trailhead* to the *South Beaver Loop* on *The Whitefish Trail*
- + *McDonald Creek Trail* in Glacier Nat'l Park
- + *Swift Creek Trailhead* to *Smith Lake* on *The Whitefish Trail*
- + *Stanton Lake Trail* in the Flathead National Forest

WHITEFISH MOUNTAIN RESORT

Most people are surprised to hear that for a ski town, Whitefish is quite manageable in the winter. This is due to our proximity to Glacier National Park, which attracts 3 million visitors annually, primarily during our warm season from May through October. Our beloved ski mountain is a no-brainer for anyone seeking a ski and snowboard experience that exudes a chill, relaxed scene with incredible snow. Over 300 inches of powder falls across one of the ten largest ski resorts in the nation. Even as one of the longest-operating ski resorts, we've been able to keep it a secret of sorts, being one of the last major independent ski resorts with nearly half of the ski visits coming from the local area.

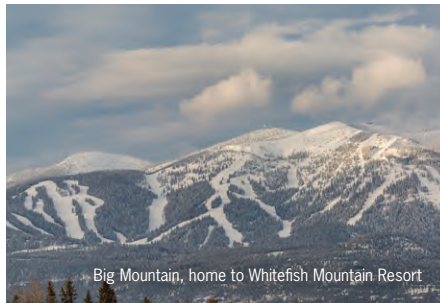
From late May through September, Whitefish Mountain Resort trades a cover of snow for a blanket of huckleberries and wildflowers, offering zip lines, alpine slides, lift-served mountain biking, an aerial adventure course, and a mountaintop restaurant accessible via scenic lift or gondola, as well as a hiking trail.



Riding the chair lifts at Whitefish Mountain Resort



Snowboarding at Whitefish Mountain Resort



Big Mountain, home to Whitefish Mountain Resort



The summit at Whitefish Mountain Resort



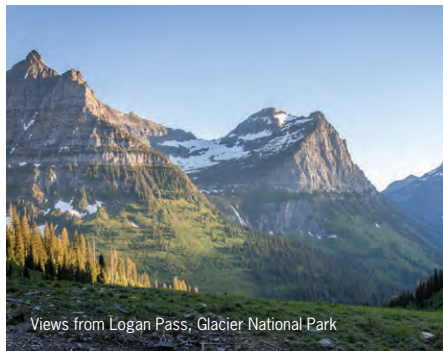
Aerial Adventure Park at Whitefish Mountain Resort



Scenic gondola rides at Whitefish Mountain Resort

SKI RUNS TO NOT MISS

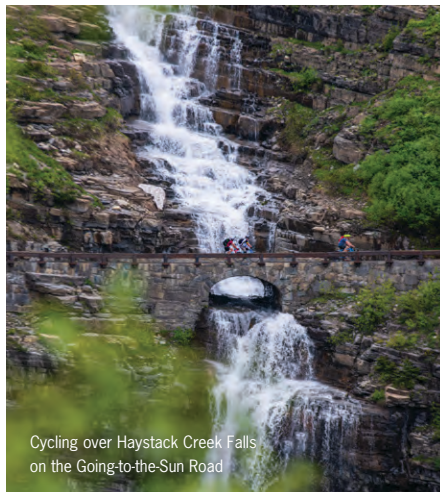
- + The views of the Flathead Valley on *Inspiration*
- + Powder stashes in *Hellroaring Basin*
- + The rolling hills on *Hellfire*
- + Powdery turns along *North Fork*
- + Views of Glacier Peaks while dropping into *North Bowl*



Views from Logan Pass, Glacier National Park



Saint Mary Lake, Glacier National Park



Cycling over Haystack Creek Falls on the Going-to-the-Sun Road



Snowshoeing around Lake McDonald Lodge

GLACIER NATIONAL PARK

As the world's inaugural International Peace Park—connected with Waterton across the Canadian border—Glacier National Park is the Crown of the Continent and offers visitors to Whitefish easy access, just 25 miles away. Reservations are now required to drive the famous Going-to-the-Sun Road up over Logan Pass but check for local knowledge on the Explore Whitefish website, and we'll steer you in the right direction. If you're flexible, visiting Whitefish and Glacier away from the peak visitor season of July and August is always a good call. Our locally-owned, locally-served businesses enjoy spreading the love for what we offer in the spring, fall, and winter—when there's a little more breathing room and still such stunning beauty as the seasons turn.

See page 61 for helpful tips for planning your visit to Glacier National Park.



A mountain goat near Logan Pass, Glacier National Park

WILDLIFE AND THE FOOD CHAIN

When we hike, we carry bear spray around here! We love our furry friends, but living among wild creatures deserves respect and caution. Visitors should avoid approaching wild animals, secure food and garbage, know how to use bear spray, and hike in groups with lots of noise. Bring a telephoto lens to capture a photo of some of our famous wild residents, but don't get too close. Primarily, be aware. Avoid a surprise encounter of the grizzly kind!

WILDLIFE SAFETY TIPS

- + Never approach a wild animal
- + Keep a safe distance, 300 feet (100 yards) for bears, wolves, mountain lions, 75 feet (25 yards) for goats, sheep, elk, moose, deer
- + Always carry bear spray and know how to use it
- + Secure your food and garbage
- + Hike in groups and make noise
- + Be aware of your surroundings

WILDLIFE VIEWING SPOTS

- + Mountain goats and bighorn sheep are often seen near Logan Pass in Glacier National Park
- + Grizzly and black bears can be spotted all over the area, but are commonly viewed throughout Glacier National Park
- + Herds of elk can occasionally be seen driving to Whitefish Mountain Resort or along North Fork Road

2FlyUs Hot Air Balloons

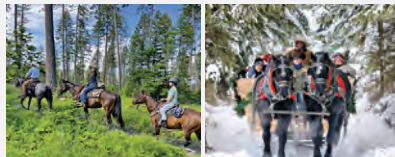
Sunrise & Sunset Balloon Rides June – Sept
602-525-4282; 2FlyUs.com

Backcountry Flying Experience

Float Plane Tours of Glacier Country
406-890-3419
backcountryflyingexperience.com

Big Sky Brews Cruise

Craft Beer, Wine & Spirit Tours
406-303-3559; bigskybrewscruise.com



Trail Rides, Wagon Rides & Sleigh Rides at Bar W

Experience the beauty of Whitefish with Bar W Guest Ranch. Choose from a range of unforgettable adventures, including a scenic two-hour trail ride through Spencer Mountain, a charming draft-horse-drawn wagon ride, or a magical winter sleigh ride across a snowy wonderland. At Bar W, there's something for everyone to enjoy.

406-863-9099; thebarw.com

Clydesdale Outpost

Horseback, Carriage, Sleigh Rides, & Barn Tours
406-407-8983; 100 Outpost Drive
clydesdaleoutpost.com

DREAM Adaptive Recreation

Year-Round Outdoor Adaptive Recreational Opportunities
406-885-9539; dreamadaptive.org

Glacier Skate Academy

Montana's Premier Figure Skating Academy
406-200-8325; 715 Wisconsin Avenue
glacierskateacademy.org

Glacier Tourbase

Local Tour & Activity Concierge
406-200-8325; 643 Denver Street, Suite 100
glaciertourbase.com



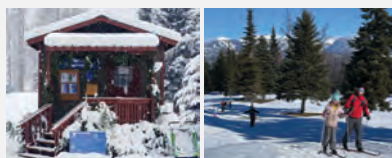
Glacier Cyclery & Nordic Bicycle & Nordic Sales, Rentals, Repair

Bike adventures start here! Full service year-round bike rental, sales and repair store located in downtown Whitefish. Since 1982 we've geared folks up for fun with bikes, accessories, maps, clothing and parts. Nordic ski rentals, sales and tuning in the winter. Stop by for local trail info and friendly service!

406-862-6446; 326 East Second Street
glaciercyclery.com

Great Northern Powder Guides

Guided Backcountry Cat Skiing & Deep Powder!
406-881-2032
greatnorthernpowderguides.com



Glacier Nordic Club Cross Country Ski Programs, Lessons, Rentals & Grooming

Get outside with Glacier Nordic! Our non-profit maintains and grooms over 67km of cross country ski trails, including the Big Mtn. Trailhead, Whitefish Lake Golf Course (Glacier Nordic Center), Meadow Lake Golf Course (Meadow Lake Nordic), Muldown ski loop and Round Meadow, in partnership with the Forest Service. Visit us for rentals, lessons and programs all year long!

406-862-9498; 1200 Highway 93 West
glacienordicclub.org

Hank's Hatchets

Flathead Valley's First Indoor Axe Throwing Venue
406-730-2556; 6078 Highway 93 South
hankshatchets.com

Lakestream Fly Shop

Guided Fish & Float Trips on the Flathead River
406-862-1298; 669 Spokane Avenue
lakestreamflyshop.com

Skydive Whitefish

Tandem Skydiving
1-866-680-JUMP; jump@skydivewhitefish.com
skydivewhitefish.com



Good Times Supply Co. Quality Service, E-Bike Rentals, & Delivery

Flathead Valley's easiest E-Bike rentals at the best prices. Locally owned and operated, high quality e-bike rentals with delivery across the Flathead Valley. Perfect for trips to Glacier Park, around Whitefish, Kalispell and Flathead Lake. Free delivery in Whitefish. Group and multi-day discounts available. Good Times Guaranteed.

406-249-2792; goodtimesupply.co



The Lodge Marina



Whitefish Lake Boat Rentals & Cruises

The Lodge Marina is open to the public, offering watercraft rentals including pontoon, ski and wake boats, personal watercraft, kayaks, and stand-up paddleboards. Also available are full-service gas, boat slips, wakeboard or surf classes, and private cruises on our gorgeous wood boats, The Lady of the Lake and the Laurie Jo!

406-863-4020; 1380 Wisconsin Avenue
lodgeatwhitefishlake.com/marina

WHITEFISH MARINE

BOAT RENTALS & SNOWMOBILE TOURS

BOAT SALES - SERVICE - STORAGE

**PONTOON & SURF
BOAT RENTALS ON
WHITEFISH &
FLATHEAD LAKE**

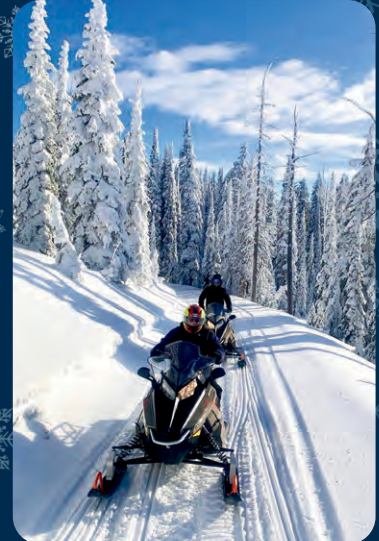


Whitefish Marine
#SurfTheFish

**BOOK ONLINE
TODAY!**



WHITEFISHMARINE.COM
(406)862-8594



**GUIDED SNOWMOBILE
TOURS IN STILLWATER
STATE FOREST**



Whitefish Lake Golf Course

OUTDOOR ACTIVITY IDEAS

- + Play a round at Whitefish Lake Golf Club
- + Go rock climbing with The Mountain Guides Montana
- + Take a guided hike with Whitefish Outfitters & Tours
- + Pick huckleberries on the Danny On Trail
- + Ride horseback at Bar W Guest Ranch or Clydesdale Outpost



RENT E-BIKES HERE

Whitefish Montana's Premier E-Bike Store

OUTDOOR ADVENTURE AWAITS!

Best Price Guarantee

Reserve Now, Pay Later, Cancel Anytime

New 2025 Aventon E-Bikes

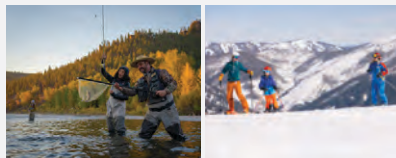
Flexible Options

for more details &
pricing please visit:

mtebikes.com

AVENTON AUTHORIZED DEALER

**WESTERN MONTANA'S
GLACIER
COUNTRY**



Western Montana's Glacier Country

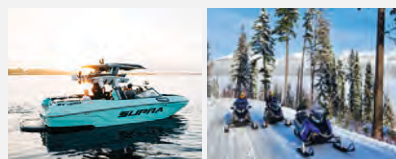
Western Montana's Glacier Country is steeped in natural treasures, cultural richness and unforgettable experiences. Come for the Montana you had in mind—hiking, fishing, skiing and horseback riding—and gear up for the unexpected: a diverse tapestry of arts, cultures, culinary experiences, local vibes, unique lodging, scenic travel corridors and vibrant small towns. Please recreate responsibly.

800-338-5072; glaciermt.com

Stumptown Historical Society & Whitefish Museum

Preserving the history of Whitefish and the Flathead Valley
406-862-0067; 500 Depot Street
stumptownhistoricalsociety.org

Whitefish Marine
#SurfTheFish



**Whitefish Marine
Boat Sales, Service, Storage, Rentals
& Snowmobile Tours**

Whitefish Marine is your one-stop-shop for year-round fun in the great outdoors, offering Boat Rentals on Whitefish and Flathead Lake, and Guided Snowmobile Tours in the secluded Stillwater State Forest, a short drive away from Glacier National Park! You're invited to discover the wonder of Whitefish with Whitefish Marine.

**406-862-8594; 5960 Highway 93 South
WhitefishMarine.com**

Stumptown Ice Den

Hockey, Public Skating, Figure Skating
406-863-2477; 715 Wisconsin Avenue
stumptowniceden.org

Western Pleasure Tours

Explore the West a Different Way with Custom-Designed Group Tours
314-369-9023; westernpleasuretours.com



**Montana E-Bikes & More
Large Selection of E-Bikes for Sale & Rent**

Welcome to Whitefish, Montana's premier E-Bike store. We are located in Whitefish and have an amazing fleet of 2025 Aventon E-Bikes for rent and sale, to help you enjoy the Flathead Valley. We have the absolute best e-bikes with powerful motors, long range batteries, multiple levels of assist, and throttles.

**406-200-8495; 6475 Highway 93 South
Suite 6; mtebikes.com**



**The Mountain Guides Montana
Guided Rock Climbing in Northwest Montana**

The Mountain Guides Montana offers rock climbing ranging from beginner to advanced with half and full day options. As the only American Mountain Guides Association accredited guide service in Northwest Montana, our professional guides are trained and certified. Let Mountain Guides Montana create an adventure to fit your needs.

**406-344-7515; 650 Blanchard Lake Road
themountainguides.com**

Whitefish Lake Golf Club

36 Hole Golf Complex, All Services
406-862-5960; 1200 Highway 93 West
golfwhitefish.com



**Whitefish Mountain Resort
Ski Resort and Summer Adventure**

Only 15 minutes from downtown! Skiers and snowboarders enjoy over 300 inches of annual snowfall on 3,000 acres of glades, groomers, bowls, and steeps with runs for every ability. In the summer, adventure awaits with Zip Line Tours, the Aerial Adventure Park, Alpine Slides, mountain biking, and Scenic Lift Rides.

**406-862-2900; 1015 Glades Drive
skiwhitefish.com**

Whitefish Outfitters & Tours

Tour company & equipment rentals in downtown Whitefish. 406-212-0080; 541 Spokane Avenue
whitefishoutfitters.com

Whitefish Ski Heritage Museum

Documenting the early history of skiing in the Flathead Valley; 406-885-2730;
705 Wisconsin Avenue; fvsef.org/ski-museum

The Whitefish Trail

Multi-use, Natural Surface, Singletrack
Recreational Trail Network
406-862-3880; whitefishlegacy.org

Winter Woods Dog Sled Tours

Dogsled tours – Tours for Two
Email to Reserve: bsparr@centurytel.net

Bar W Guest Ranch

Whitefish, Montana

Reconnect & Renew Your Spirit

Guest Week Packages

Bar W Guest Ranch is nestled at the base of Spencer Mountain, with thousands of acres available for horseback riding and outdoor activities. This 140 acre ranch is surrounded by majestic forests and abundant wildlife.

Bar W Guest Ranch offers all-inclusive, 6-night package stays. Although horseback riding is core to a week at the ranch, Bar W offers a wide variety of additional activities including archery, roping, hatchet throwing, kid's program, campfires, cowboy singing, and so much more. Arrive as guests and leave as family!

Learn More!



Public Trail Rides

Saddle up and enjoy a scenic two-hour trail ride through the lush and peaceful mountain forest. Bar W's friendly, expert wranglers and horses are waiting for you! Our horses and terrain are suitable for all levels of riders.

Trail Rides
Book Online!



Winter Sleigh Rides

This winter, glide across Montana's snow-covered landscape while cozied up under a plush blanket with family and friends. After an enchanted, horse-drawn sleigh ride, warm up with cookies, hot chocolate and coffee inside.

Sleigh Rides
Book Online!





The Spa at Whitefish Lake

THE COMMUNITY OF WHITEFISH offers a variety of establishments to nourish your body and soul, keeping you healthy, energized, and ready for your next outing. From Pilates and yoga studios to IV treatments, gyms, and physical therapy, each place provides a unique approach to staying active. While primary and emergency care in Whitefish is state-of-the-art, Logan Health Whitefish also offers a comprehensive wellness experience with top-notch services designed to help patients feel comfortable during their healing process.

WELLNESS ON THE GO

- + Visit [Delia Pilates](#) to improve your strength, flexibility, and posture
- + Work up a sweat at [The Wave Aquatic & Fitness Center](#)
- + Explore one of the [15 trailheads of The Whitefish Trail](#)
- + Walk, run, or pedal the pedestrian trails along the [Whitefish River](#)
- + Paddleboard on the [Whitefish River](#)



The Spa at Whitefish Lake





Walking on The Whitefish Trail



The Spa at Whitefish Lake



Shanti Yoga

SYNC YOUR WELLNESS WITH THE SEASONS ~ by Dr. Janna Hibler, The IV Element

Be in Your Element, every season, by giving your body the nutrients it needs with food, botanicals, vitamin shots, and IV Therapy.

Summer: Antioxidants can reverse damage from the sun, which is why this is a great time to savor wild huckleberries, honeyberries, and blueberries. The Master Antioxidant of them all is glutathione! Get this through your food or a vitamin shot, with 10x the potency, to reduce inflammation, speed up metabolism, and delay aging.

Fall: Everyone knows this is the best time of year to hike, bike, and walk through Whitefish or explore Glacier National Park. Why not build a resilient immune system with IV therapy or a quick vitamin shot? Zinc directly increases your white blood cell

count, and lysine can reduce viral load. Taken with local elderberry your body will be set for any Montana adventure!

Winter: Vitamin D doesn't just strengthen your immune system, but it can also boost your mood, and balance your hormones. Pair your vitamin D shot with a fatty fish dish from Herb & Omni or the lamb plate from Swift Creek to optimize peace and relaxation.

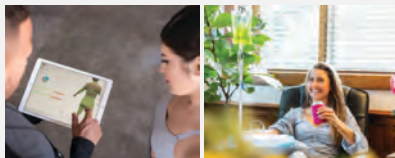
Spring: Dandelions are the earth's greatest detoxifier. In a field that hasn't been sprayed, pick a handful, wash, add one cup of boiling water, and steep for 10 minutes. Pair with IV vitamin C, B, and magnesium to repair and restore your liver.



Freshly-picked huckleberries

BusyBee IV

HYDRATION & WELLNESS



BusyBee IV Hydration & Wellness IV Therapy & Wellness Studio

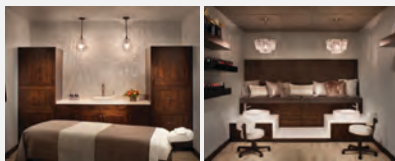
Where holistic healthcare & western medicine can be seamlessly interwoven to provide clients with the best in wellness solutions. Services include premium IV therapy, vitamin shots, advanced wellness panels, medical weight loss and more. Our goal is to enhance health and vitality for individuals and groups alike.

406-201-9378; 405 East First Street
busybee-iv.com



THE FIREBRAND

WHITEFISH · MONTANA



Spa Services in Downtown Whitefish

The Firebrand Spa offers an array of day spa services, including therapeutic massage, facials, waxing, tinting, and foot treatments. During the warm season, join us for yoga classes on the Firebrand rooftop! Open to the public.

406-863-1902; 650 East Third Street
firebrandhotel.com/spa

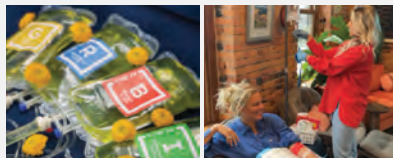
Delia Pilates

Pilates Studio, Fitness Clothing, and Education
406-862-6488; 505 Railway Street
deliapilates.com

"Best of Whitefish"
2023, 2024



Give your mind and body the nutrients it needs so you can be in Your Element!



Functional Medicine, IV Therapy, Vitamin Shots

Practicing preventative health for more than 10 years, nothing brings us more joy than to see you get excited about your health. From advanced testing, to oxygen, to nutrition and botanical therapy, we will design a personalized plan that works best for you and your lifestyle. Come on in to our studio and live in your highest element with Dr. Janna Hibler ND, MS Nutrition.

TEXT: 503-396-6314; 124 Central Ave
Instagram @ [theivelement.project](https://www.instagram.com/theivelement.project)

LOGAN HEALTH

Whitefish



Hospital with 24-Hour Emergency Services

Logan Health - Whitefish is a nonprofit Critical Access Hospital located in Whitefish, Montana with 24-hour emergency care including imaging and laboratory services. The hospital also offers walk-in care clinics in Columbia Falls, Eureka, and at two seasonal clinics located in West Glacier (summer) and at Whitefish Mountain Resort (winter).

406-863-3500; 1600 Hospital Way
logan.org/whitefish

SpiritWorks Herb Farm

Organic Herb Farm & Botanical Herb Garden
Tours; 406-260-7098; 127 Hideaway Trail
spiritworkstrilogy.com

shanti

yoga studio



Spreading Peace, Health & Greater Levels of Self-Awareness

Teaching yoga and the yogic lifestyle to the Whitefish community since 2006, we design in-studio and on-site private and semi-private classes and retreats based on your goals. Public classes are taught live stream via Zoom. We offer life coaching programs for couples, teens, individuals and small businesses that weave in yogic teachings.

406-862-1885; 235 Central Avenue
shantiyogamontana.com



The Spa at Whitefish Lake




Resort Day Spa on Whitefish Lake

Professional therapists and aestheticians offer massage, facials, waxing, body treatments, and nail services. Indulge and relax in our spa lounge, with access to the lakefront hot tub and seasonal pool and saunas. Premium retail products from Naturopathica, Farmhouse Fresh, Voluspa and more encourage clients to continue practicing wellness at home.

406-863-4050; 1380 Wisconsin Avenue
lodgeatwhitefishlake.com/spa

The WAVE

Flathead's Premier Aquatic & Fitness Center
406-862-2444; 1250 Baker Avenue
whitefishwave.com



*Natural treasures
around every bend.*

In Western Montana's Glacier Country, awe-inspiring landscapes, exhilarating recreation and vibrant small towns take you out of the noise and put you right into the moment. Here, we take care of these places that recharge us so they remain a beautiful respite for generations to come.

RecreateResponsiblyMT.com
GlacierMT.com | #GlacierMT
f x @ n v d j



RECREATE
RESPONSIBLY



WESTERN MONTANA'S
GLACIER COUNTRY



Last Chair Kitchen & Bar

INDULGE IN AWARD-WINNING CUISINE, complemented by an impressive selection of world-class wines and exceptional service—the trifecta of a memorable dining experience in Whitefish. Here, culinary delights span a spectrum of styles and flavors, with many chefs taking pride in sourcing fresh, local, and organic ingredients to craft their dishes. Every meal is a chance to savor the essence of the region. After a delectable meal, immerse yourself in the local nightlife at the vibrant bars and lounges that line the downtown streets. Whether you're into acoustic melodies in a cozy bar or dancing to the beats of a full band or DJ, live music awaits almost every night of the week.



Fleur Bake Shop

Photo top © Drew Silvers; Photo left © GlacierWorld.com

ICON KEY FOR EAT & DRINK LISTINGS

\$\$\$ \$=\$5-15 AVG. ENTRÉE
 \$\$=\$9-24
 \$\$\$=\$15-39+

BLD B=BREAKFAST
 L=LUNCH
 D=DINNER

FULL BAR

PRIVATE ROOM AVAILABLE

WINNING WINE LIST

OUTDOOR SEATING AVAILABLE

DELIVERY AVAILABLE

RESERVATIONS SUGGESTED

BEER & WINE

CATERING AVAILABLE

WIFI AVAILABLE

CHILD FRIENDLY

BAR SEATING AVAILABLE

LIVE MUSIC OFTEN

Photos right (clockwise from top left): © MOTIBD; © Noah Couser (courtesy of Thirty Eight); © Drew Silvers; © Herb & Omni; © Drew Silvers; © Drew Silvers



The Boat Club



Thirty Eight



Swift Creek Cafe

FOR THE LOVE OF GREAT FOOD



Spotted Bear Spirits



Fleur Bake Shop



Herb & Omni

CRAFTING THE PERFECT COCKTAIL

~ by Lauren Oscilowski, Spotted Bear Spirits

Whitefish has a dynamic cocktail scene! You can bar-hop around town, and everyone has different flavors on their menus – it makes for a pretty fun time! A well-balanced cocktail usually has three components: the spirit, something tart, and a balancing sweet element. Within that, there are so many ways to play with flavors and aromas. At Spotted Bear Spirits, we usually start with one of those ingredients as a foundation, and from there build the cocktail. In the summer, when we have access to juicy and sweet Flathead Cherries, we use them as a starting point. Our gin plays nicely with the sweet, slightly tart flathead cherry juice – we will add a splash of lemon juice, some pineapple syrup, and a dash of Angostura Bitters. Angostura bitters (bitters in general) are kind of like the salt of cocktail creation, they can help pull all the flavors together and make them pop. Shake and pour over ice and garnish with a fresh or candied Flathead cherry and you have a beautiful and refreshing drink that showcases local produce and will have you savoring every last drop of summer.



Lakeside dining & drinks inspired by vibrant coastal cuisines from around the world.

TIKI BAR

OPEN SEASONALLY AT THE LODGE AT WHITEFISH LAKE
1380 WISCONSIN AVE. WHITEFISH | 877.887.4026 | LODGEATWHITEFISHLAKE.COM



Amazing Crepes

Breakfast, Brunch, and Coffee



\$ BL

Amazing Crepes has been a local favorite for 20 years! We specialize in authentic, made-to-order French crepes, including savory, sweet, gluten-free, and vegan options. Our café is casual and family-friendly. Join us daily for locally roasted coffee, crepes, and seasonal soups and salads.

406-862-6002 • 123 Central Avenue • amazingcrepes.com



Base Lodge Bar & Grill

Whitefish Mountain Resort Base Lodge Bar & Grill



\$ BL

Looking for a snack near the lifts? Hungry after a whole day of shredding pow? The Base Lodge Bar and Grill is located right in the Base area next to Chairs 6 and 4! This eatery features a bar and grill with a small cafe! Visit skiwhitefish.com for info.

406-862-2900 • 1015 Glades Drive • skiwhitefish.com



Beldi

Mediterranean and Levant Regional Cuisine



\$\$\$ D

Beldi offers a Mediterranean inspired cuisine focused on sourcing the highest quality spices, vegetables, fish, pork, and beef. The intimate chef-owned restaurant focuses on a warm, welcoming environment featuring a wine list focusing on small unique producers. Local art and eclectic music create a fun backdrop.

406-730-1677 • 306 East Second Street • beldiwf.com

The Belvedere
A ROOFTOP GARDEN

Belvedere Rooftop Lounge

Views, Cocktails, Smalls Plates, Private Events



\$\$\$ D

The Belvedere is a rooftop garden that encompasses the beautiful views of our beloved Whitefish Mountain, Central Avenue and beyond. Enjoy thirst-quenching cocktails, a rehearsal dinner, a wedding reception or musical entertainment on a warm summer evening. It's the perfect place to gather before, during, or after dinner.

406-862-8150 • 101 Central Avenue • herbandomni.com



Boat Club Restaurant

Premium Steaks, Casual and Fine Dining



\$\$\$ BLD

Whitefish's only lakeview restaurant welcomes guests like family, featuring options to delight and fuel your adventure. We host breakfast and dinner in the Dining Room and lunch and dinner in the Bar—a upbeat setting with live music 2-3 nights/week. Don't miss the seasonal Tiki Bar for waterfront dining and bar.

406-863-4040 • 1380 Wisconsin Avenue • lodgeatwhitefishlake.com/eat-drink



Clydesdale Creamery
Shake-Up Joy



\$ LD 🍷

Indulge in exquisite milkshakes, creamy ice cream creations, gourmet s'mores, and aromatic espresso at Clydesdale Creamery Milkshake Saloon & Espresso, nestled in the picturesque town of Whitefish, Montana. Since its inception in 2024, this charming establishment has captivated ice cream aficionados with its delectable offerings, ensuring a sweet escape for every guest.

406-270-4460 • 16 Baker Avenue • clydesdalecreamery.com



Craggy Range Bar & Grill
Your Sports Bar Headquarters



\$\$ LD 🍷 🎵 🍷 🪑 🕒 🪑

Craggy's 25+ flat screens and full bar with the only frost rail in the valley are just a couple reasons why it's THE place to watch sports. Add in a full-service patio and fire pit, outdoor live music, innovative menu, and kick-butt happy hour, and it's THE place to hang out during any season.

406-862-7550 • 10 Central Avenue • thecraggyrange.com



Ed & Mully's
Whitefish Mountain Resort
Slopeside Bar & Grill



\$ LD 🍷 🍔 📺 🕒 🪑 🪑 🎵

Looking for a snack near the lifts? Hungry after a whole day of shredding pow? Ed and Mully's Bar and Grill is located right in the Village area next to Chairs 2 and 3! Ed and Mully's features a bar and grill with cafeteria-style dining. Visit skiwhitefish.com for info.

406-862-1980 • 3905 Big Mountain Road • skiwhitefish.com/dining-and-apres



THE FIREBRAND
WHITEFISH - MONTANA

Firebrand Restaurant
Regionally Inspired Cuisine,
Happy Hour Daily



\$\$\$ BD 📞 🍷 🍔 🔑 📺 🎵 🪑 🕒 🪑

Ignite your senses in the contemporary ambiance of Firebrand Restaurant. Offering dinner nightly, a full bar with craft cocktails, and live music every Saturday. The Coffee Bar offers specialty drinks and on-the-go breakfast. Experience the Whitefish downtown vibe with happy hour food and drink specials daily.

406-863-1919 • 650 East Third Street • firebrandhotel.com/eat-drink



Fleur Bake Shop
Bakery, Breakfast, Dessert, Espresso,
Breads



\$ BLD 🍷 📺 🪑 🕒

Fleur Bake Shop is nestled in beautiful downtown Whitefish, Montana. With a focus on local and high quality ingredients, Fleur Bake Shop offers hand-crafted French-style pastries, specialty cakes, breads, macarons, small plates, espresso and more. Come say hello and enjoy a pastry with us!

406-730-8486 • 103 Central Avenue • fleurbakeshop.com



Folklore Coffee
Coffee. Pastries. People.



\$ BL

Folklore Coffee Whitefish is a cozy artisan coffee shop focused on serving up delicious coffee and food with service to match. Our Montana roasted coffee is paired with house-made syrups, breakfast burritos, waffles, hashbrown waffles, baked goods, and sourdough toasts sourced mostly from local ingredients.

406-730-1020 • 403 East Second Street, Ste. 104 • folklorecoffeemt.com



Herb & Omni
Herbivore, Omnivore, Elevated, Local,
Music, Entertainment



\$\$\$ D

Welcome to Herb & Omni, inside 101 Central. Our purpose is to nourish herbivores and omnivores with real food sourced as close to home as possible from purveyors who hold their ingredients in the highest regard.

406-862-8150 • 101 Central Avenue • 101centralwhitefish.com



Indah Sushi
Fresh Fusion Sushi Eatery and Sake Bar



\$\$ D

Indah Sushi creates fresh, seasonal, local and sustainable fusion dishes! Indah Sushi is not to be missed! Catering and food truck also available for private events.

406-730-1340 • 250 East Second Street • indahsushi.com



Last Chair Kitchen & Bar
Casual Creative Cuisine, Craft Beer & Wine



\$\$ D

Last Chair Kitchen & Bar embraces everything that we believe a good dining experience should be—wonderful food and drink, exceptional service, a warm and welcoming atmosphere, and a place where you can sit and recount your stories of the day's adventures with friends and family. We look forward to seeing you soon!

406-863-5455 • 1705 East Lakeshore Drive • lastchairkitchenandbar.com



Latitude 48 Bistro + Red Room Lounge
Artful Fusion of Worldly Cuisine



\$\$ D

Latitude 48 represents an artful fusion of traditional and contemporary trends, both through our worldly cuisine and our atmosphere. Throw in an international wine list with over 15 wines by the glass and you've got a dining experience destined to entertain your senses. Downstairs at the Red Room, you'll find a plush lounge where you can sit back and enjoy a signature martini, small plates, fire-roasted pizza, a glass of wine or craft beer.

406-863-2323 • 147 Central Avenue • latitude48bistro.com

BREWERIES, WINERIES & DISTILLERIES

Distilleries and breweries throughout the state of Montana have different rules for alcohol consumption compared to restaurants and bars. Because this can vary by type of establishment, it's best to inquire about the rules when you arrive at a place of business. One thing rings true for all places that sell alcohol—all reserve the right to refuse service to intoxicated people.

Microbreweries: Montana breweries can serve up to 48 ounces of beer per person, per day until 8 p.m., and it may be consumed on premise until 9 p.m. Growlers can also be filled until 9 p.m. but must be consumed off premises.

Craft Distilleries: Montana distilleries can serve up to two ounces of liquor per customer, per day which must be consumed before 8 p.m. Additionally, each customer is allowed to purchase a maximum of 1.75L per person, per day and must be consumed off premises.

Wineries: Wineries have general alcohol rules with no daily ounce limit.



Flathead cherries

FOODS FROM THE REGION

- + Wild huckleberries ripen July and August from the valleys up to the mountain tops—a close cousin of the blueberry.
- + Edible mushrooms such as the morel, are found in nearby forests, and are abundant in spring and early summer.
- + Flathead cherries, ripening in July, are grown along the shores of Flathead Lake, where lake-effect keeps temperatures a bit more moderate than other parts of the region.
- + Elk, bison, and various fish are all popular regional offerings.

Memorable dining experiences on beautiful Whitefish Lake.

Classic & specialty breakfast selections.

Casual dining for lunch & dinner in the Bar & live music weekly.

Fine dining dinner service in the Dining Room. Dinner reservations recommended 406.863.4040

1380 WISCONSIN AVE. WHITEFISH | 406.863.4000 | LODGEATWHITEFISHLAKE.COM

THE FIREBRAND
Regionally inspired casual dining

On-the-Go Breakfast / Coffee Bar / Seasonal Outdoor Patio
Dinner Service / Full Bar / Daily Happy Hour / Live Music Weekly

650 EAST THIRD ST. WHITEFISH | 406.863.1919 | FIREBRANDHOTEL.COM



GROUSE MOUNTAIN LODGE

Logan's Bar & Grill

Classic Cuisine with Montana Flair



\$\$ BD      

Located just off the grand lobby in Grouse Mountain Lodge, Logan's boasts an award-winning culinary team with a unique take on traditional Montana fare. The grill features a warm and casual atmosphere, towering stone fireplace and heated outdoor patio and fire pit. Overlooking the 18th hole of the Whitefish Lake Golf Course you won't find a more relaxing way to top off an adventurous day of exploring Northwest Montana.

406-862-3000 • 2 Fairway Drive • grousemountainlodge.com/logans



MacKenzie River Pizza

Best Pie in the Big Sky



\$ LD  

Offering an incredible array of delectable dishes, always flavorful, fresh and served up in heaping portions. The acclaimed gourmet pizzas are offered on a variety of crusts—original, thin and gluten-free. Other items include hearty sandwiches and wraps, fresh salads, pastas and the newest menu addition, scratch-made bowls. To complement the menu choices, select from a variety of local and regional craft brews and fine wines.

406-862-6601 • 9 Central Avenue • mackenzieriverpizza.com



Mambo

Mountain Italian



\$\$ D      

The lights are low, the music is up, the wine is flowing, and the energy is buzzing. It's a perfect evening and a perfect setting for Italian food at Mambo's. With creative twists on classic recipes there is something for everyone in the family. Our pasta dishes with rich, savory sauces and fresh ingredients, thin crust pizzas baked to perfection, and unmatched service will keep you coming back for more.

406-863-9600 • 234 East Second Street • ciamambo.com



Montana Coffee Traders Downtown Café

Coffee Shop (Breakfast & Lunch), Gift Shop



\$ BL   

Since 1981, Montana Coffee Traders has been the premier coffee roaster in the Flathead Valley. We welcome you to our cafes where you will find a wide selection of locally roasted coffee, espresso drinks and quick meals. You can plan your adventures while relaxing in the café or order online for pick up from our Downtown Whitefish location.

406-862-7667 • 110 Central Avenue (Downtown Cafe) • coffeetraders.com



Montana Coffee Traders Roastery

Roastery, Tours, Café, Mercantile



\$  

Montana Coffee Traders has been roasting coffee since 1981 just south of Whitefish, Montana. Offering a wide variety of freshly roasted coffees, coffee accessories, gifts, espresso drinks, light food and pastries. Join us for a Roastery Tour every Tuesday at 10:00 a.m. to experience all things coffee—reservations required. Call 406-862-7628 to reserve your spot!

406-862-7628 • 5810 Highway 93 South (Roastery) • coffeetraders.com



Piggyback BBQ
BBQ Ribs, Sandwiches, Salads & Catering



\$ BLD ☎ 🍷 🍽 📶 🪑 🧑🍳

Serving up Texas-style brisket and sausage, Carolina pulled pork, St. Louis-style ribs, rotisserie smoked chicken and smoked turkey plus gourmet burgers, tacos and salads. Great beer and wine selection. Bring the whole family. Gluten-free and vegetarian options available. Catering available.

406-863-9895 • 102 Wisconsin Avenue • piggybackbbq.com



Spotted Bear Spirits
Enjoy Hand-Crafted Spirits, Fresh Cocktails & Bottle Sales



\$ \$\$ 🧑🍳 🪑

Spotted Bear Spirits distills a variety of spirits including whiskey, vodka, gin, and organic agave spirits. Visit their tasting room for tasting flights, cocktails and bottle sales.

406-730-2436 • 503 Railway Street, Suite A • spottedbearspirits.com



Summit House Bar & Grill
Whitefish Mountain Resort's
Summit Bar & Grill



\$ BL 🍸 📶 🧑🍳 🪑 🪑

Need a snack on the mountain? How about a snack on top of the mountain?! The Summit House Bar and Grill is located on the Summit of Big Mountain next to Chairs 1 and 7! The Summit House features a full bar with cafeteria-style dining. Accessible by chairlift (no drive-up access). Visit skiwhitefish.com for info.

406-862-2900 • 3812 Big Mountain Road • skiwhitefish.com



Sweet Peaks Ice Cream
Handcrafted Local Ice Cream



\$ LD 🍽 📶 🪑 🧑🍳 🚗

Sweet Peak Ice Cream was founded in 2010 by two ice cream loving Montanans. We carefully craft our ice cream and sorbets in Whitefish, Montana using Montana dairy and a selection of quality ingredients from the mountains.

406-862-4668 • 419 East Third Street • sweetpeaksicecream.com



Swift Creek Cafe
A Soulful Expression of Family Crafts



\$\$ BL 🍽 📶 🧑🍳 🪑

Swift Creek Café is a place of character, art, family and community. And it's a restaurant that's about more than just food, but about family. The Moreno family welcomes you to Swift Creek Café. They hope that, in taking a seat at their table, you share your own passion for great food, delicious coffee and welcoming community, and become a part of their extended culinary family.

406-862-9136 • 307 East Second Street • swiftcreekcafe.com



Thirty Eight
Live Music, Food Trucks, Bar, Downtown

\$\$ LD



Designed for Montana's comfortable, laid-back mountain lifestyle with a bit of grit, we're bringing live music, a rotation of various food trucks, local ice cream, artisans, craft beverages, residents and visitors together in an open-air setting on Central Avenue. Make sure to check out Whitefish's newest venue, Thirty Eight!

38 Central Avenue • thirtyeightwhitefish.com



Tiki Bar
Whitefish Lake Waterfront Food & Drinks

\$\$ LD 🍸 🎵 🪑 🌀 🪵



The Tiki Bar offers summer fun, cocktails, and fresh food inspired by the vibrant flavors of coastal cuisines. Enjoy lakeside soft seating, table or bar seating, or pick up provisions to take out on Whitefish Lake. Challenge yourself and your friends at the Tiki Toss! Open to the public, weather permitting.

406-863-4040 • 1380 Wisconsin Ave • lodgeatwhitefishlake.com/tiki-bar-grill



Vibrant Roots Organic
Organic Juice, Jun-Kombucha, Ginger Beer & More

\$



Women owned and operated, we offer organic, gut healthy products that help you shine from the inside out. Our vibrant Jun-Kombucha selection is brewed with green tea and local Montana Honey. We offer organic cold-press juices and cashew milks, in house, that are sourced as locally as possible and completely unpasteurized, preserving the highest nutrient content. Come visit our self-serve shop to find all that and more!

vibrantroots.com • 1820 Baker Avenue • info@vibrantroots.com



Wasabi Sushi Bar & Ginger Grill
Sushi and Grill Cuisine, Contemporary Flair

\$\$ D 📞 🍷 🍽️ 🌀 🪵 🚗



Wasabi Sushi Bar and Ginger Grill has an extensive menu of delicious traditional and fusion sushi rolls and wonderful grill food made and by a talented staff in a friendly fun atmosphere served by a wonderful team. Wasabi has the largest selection of Sake in Montana! Wasabi Sushi Bar is consistently voted #1 for Best Fish in Whitefish every year!

406-863-9283 • 419 East Second Street • wasabimt.com



Wild Coffee Company
Coffee, Smoothies,
and Light Breakfast/Lunch

\$ BL 📞 🌀



Wild is a coffee shop/roastery in downtown Whitefish, Montana. Our goal is to create a welcome space for those that venture far from home and those that call this place home. We believe in delicious coffee, curious elixirs and snacks that refuel you for the adventures of the days.

406-730-2833 • 309 Central Avenue • wildcoffeecompanymt.com

VOTED BEST DISPENSARY IN MONTANA, WHITEFISH & THE FLATHEAD!

Light Up The North



SCAN FOR SHOP & SOCIAL
OPEN EVERY DAY

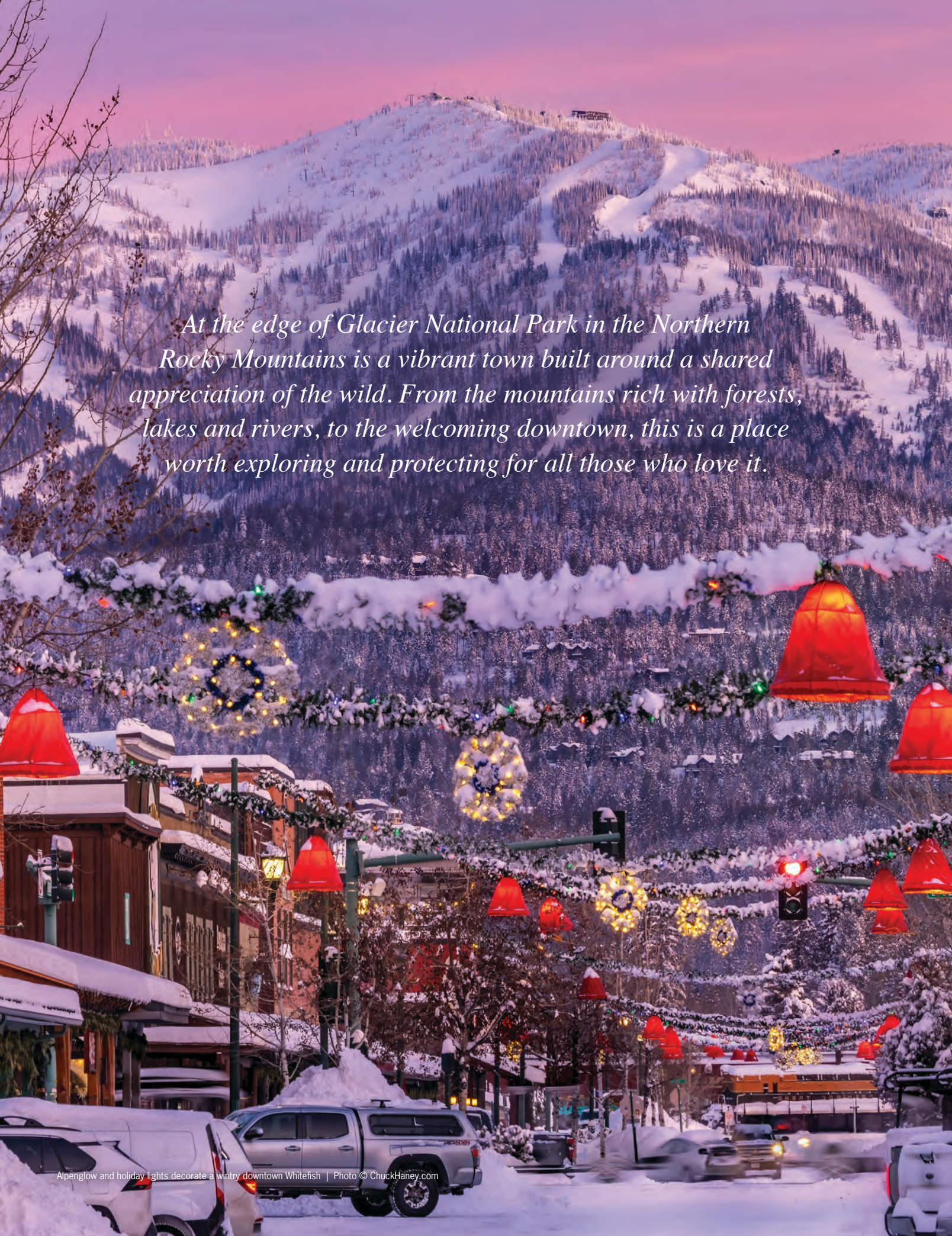


WHITEFISH | KALISPELL
www.tamarackcannabis.com



Tamarack
cannabis
MONTANA



A winter scene in Whitefish, Montana, featuring a snowy mountain range in the background and a downtown street decorated with Christmas lights and garlands in the foreground. The mountains are covered in snow and evergreen trees, with ski lifts visible. The foreground shows a street with snow-covered cars, buildings, and festive decorations including large red bell-shaped lights and strings of colorful lights. The sky is a soft, hazy pink and purple.

At the edge of Glacier National Park in the Northern Rocky Mountains is a vibrant town built around a shared appreciation of the wild. From the mountains rich with forests, lakes and rivers, to the welcoming downtown, this is a place worth exploring and protecting for all those who love it.



Imagination Station toy store

A STROLL DOWNTOWN along the covered sidewalks of Central Avenue or through the historic Railway District reveals artisan jewelry made with Montana-native gems or a new pair of hiking boots for the next adventure. Locally-roasted coffee beans, homemade skin care, hand-dyed yarn and huckleberry products make great gifts for those back home.



Shopping at Wild Coffee

TAKE IT HOME WITH YOU

- + Look for active gear or bike rentals at [Whitefish Outfitters](#)
- + Treat yourself to a milkshake from [Clydesdale Creamery](#) and take home the souvenir mug
- + Dive into the world of supplements and wellness at [Haskill Creek](#)
- + Explore Montana-made goods at [Markus Community Market](#)
- + Lose yourself in the wide variety of music selections at [Slow Burn Records](#)
- + Grab a new outfit for a night out on the town from [The Toggery](#)
- + Pick up that suede hat you've been dreaming about at [Kemo Sabe](#)

Whitefish's low-key, friendly vibe and walkable downtown are downright charming.

~ Sunset Magazine



Locally-roasted coffee at Montana Coffee Traders



Slow Burn Records



The Toggery



Shops along Central Avenue



Shopping at The Toggery



Chill Clothing Co.

Chill Clothing Co.

Fine Apparel, Accessories, and Art
406-730-1777; 415 East Second Street
chillclothingcompany.com

Dirt Rich Composting

Food Scrap Pick-up, Retail Compost Product
406-212-7535
dirtrichcompost.com

First Interstate Bank

Neighbors Helping Neighbors
406-863-8888; 306 Spokane Avenue
firstinterstatebank.com

Flathead Industries Whitefish Thrift

Quality Used Clothing, Household & Vintage Items
406-862-5221; 223 Baker Avenue
flatheadindustries.org

FORLOH

American-Made Outdoor Gear
406-730-8757; 317 Central Avenue
forloh.com

Glacier Bank

Committed to Supporting Our Community
406-863-6300; 319 E. Second Street
glacierbank.com



Glacier Cyclery & Nordic

Bicycle & Nordic Sales, Rentals, Repair
406-862-6446; 326 East Second Street
glaciercyclery.com

Grouse Nest Gift Shop

Regional and Glacier Souvenirs and Clothing
406-862-3000; 2 Fairway Drive
grousemountainlodge.com

Harlow

A Feisty & Fun Boutique for Women
406-730-1523; 100 Central Avenue, Ste 101
lowandlette.com

Imagination Station

Toys that Open the Imagination; montanatoys.com
221 Central Ave, Whitefish (406-862-5668) or
132 Main St, Kalispell (406-755-5668)

Kemo Sabe

Western Wear: The Originals Since 1990
406-800-1790; 20 Spokane Avenue
kemosabe.com

Lakestream Fly Shop

Full Service Fly Shop & Guided Trips
406-862-1298; 669 Spokane Avenue
lakestreamflyshop.com

Notice Custom Snowboards & Wakesurfers

Handmade Custom Snowboards and Wakesurfers
406-730-1357; noticesnowboards.com

Polka Dot Sheep Fine Yarns

Luxury yarns hand-dyed in Whitefish Montana
406-862-6390; 14 Lupfer Avenue
polkadotsheep.com

Sage & Cedar

Pure, Natural, Organic Skin & Bath Care
406-862-9411; 214 Central Avenue
sageandcedar.com



Haskill Creek
Whitefish's Self-Care Store

Haskill Creek is a well curated self-care and wellness boutique located right in downtown Whitefish. You can find everything from skincare, to supplements, to high quality culinary ingredients and eco-friendly lifestyle items. Their healthy cafe and smoothie bar is opening in Summer 2025.

406-655-0762; 33 Baker Avenue
haskillcreek.com

Sappari Design

Contemporary Clothing, Jewelry, Eclectic Home Decor, and Furniture Finds
406-862-6848; 215 Central Avenue
sapparimontana.com

Slow Burn Records

A Sonic Sanctuary for Music Enthusiasts & Vinyl Aficionados
406-730-2303; 22 Spokane Avenue, Ste. A
slowburnrecords.com



Hunter & Company
Interior Design • Home

Interior Design Firm & Retail Showroom
Hunter & Company is an interior architecture and design firm with a retail showroom. The showroom features hand-selected and one-of-a-kind items, as well as some of the country's best manufacturers of furniture, lighting and home goods and gifts. Local craftsmen and artisan are also featured from the Northwest.

406-862-1402; 200 Wisconsin Avenue
hunterinterior.com



Specialty Grocery, Deli, Fresh Produce, Butcher, Wine & Beer

Markus Community Market is a small, hometown market established in 1986, with a produce, meat and robust deli department, including daily sandwich and salad selections. Markus offers one of the most robust wine and beer selections in Montana and is happy to accommodate customer's special requests.

406-862-7258; 9 Baker Avenue
markuscommunitymarket.com

Sprouts

A Children's Boutique
406-862-7821; 216 Central Avenue
sproutswhitefish.com

Tailwaggers

Quality Pet Supplies & Dog Wash
406-862-8988; 334 Central Avenue, Suite B
tailwaggerspet.com



Western-Inspired Fashions, Fine Jewelry, Gifts

The adventurous, independent, and unique spirit of the West inspired The Mercantile at The Lodge, a fashion-forward boutique shop. Bursting with items selected for style and quality craftsmanship, The Merc stocks home furnishings, keepsakes, and gifts, as well as trending clothing, footwear, and accessories for men, women, and children.

406-863-4000; 1380 Wisconsin Avenue
lodgeatwhitefishlake.com/mercantile



Best Retail Hardware Store Ever

Nelson's ACE Hardware has been your hometown hardware store in beautiful downtown Whitefish, Montana since 1948. Continuously owned and operated by the Nelson Family for over 75 years, we know hardware! We pride ourselves in having what you need, when you need it. We are all committed to being "the Helpful Place" by offering our customers knowledgeable advice, helpful service and quality products.

406-862-3573; 6475 Hwy 93 South
acehardware.com/store-details/07568

Tate Interiors

Interior Design & Retail Showroom
406-862-5777; 6464 Highway 93 South
tateinteriors.com

The Toggery

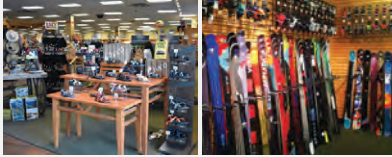
Outdoor Clothing, Footwear, Gear & Accessories
406-862-2271; 122 Central Avenue
toggerymontana.com



Snow Ghost Outfitters
On-Mountain Retail Store

Located in the village area, Snow Ghost Outfitters carries all the bigger items for your on-mountain adventures including skis, boots, goggles, helmets and premium winter outerwear including jackets and pants. You'll also find a wide selection of Whitefish Mountain Resort souvenirs and merch in both summer and winter.

406-862-1996; 3893 Big Mountain Rd
skiwhitefish.com



Backcountry to Backyard Unlimited Adventure

A world of outdoor and athletic resources for all seasons, reflecting the recreational opportunities of Northwest Montana. Hiking camping, fishing, bikes, kayaks, SUPs, ski and snowboard, athletics, sports, technical, lifestyle and resort clothing and footwear. Winter and summer rentals plus full-service shop. Locally owned since 1968.

**406-862-3111; In the Mountain Mall,
6475 Hwy 93 S; sportsmanskihaus.com**

Trovare

Gourmet Cookware, Ingredients & Cooking Classes
406-730-8515; 317 Central Avenue #102
trovaremt.com

Westside Market Whitefish

Grocery Store, Gas Station, Beer & Wine
406-862-4535; 145 Second Street
whitefishwestsidemarket.com



Third Street Market Natural and Organic Health Food Store

Whitefish's only natural food market and oldest downtown grocery store, providing our community with high-quality food choices and a wholesome health and wellness section—for over 30 years. Find locally-sourced, organic foods including beer and wine, produce, meats, and specialty diet options. Online ordering and curbside pickup available.

**406-862-5054; 244 Spokane Avenue
thirdstreetmarket.com**



Whitefish Liquor Store Fine Wines and Spirits

The Whitefish Liquor Store is equipped to address the most specific needs of our discerning customers. A perfect match of convenience and ease of access with a superior quality of libations, the store is designed to meet your every need—showcasing regional producers along with craft wines and spirits from across the globe.

**406-862-4470; 239 Baker Avenue
whitefishliquor.com**

Whitefish Thrift Haus

Non-Profit Thrift Store Supporting the WF Soroptimist
406-862-3330; 303 East First Street
soroptimistwhitefish.org

Whitefish Credit Union

Mortgages, Vehicle Loans, Online Checking
406-862-3525; 300 Baker Avenue
whitefishcu.com

RECREATIONAL MARIJUANA:

Adults 21 years or older can purchase and consume marijuana in the state of Montana. Here are some things you need to know:

- + Consumption of marijuana is not allowed in public (includes indoor spaces and out).
- + Consumption is legal in private accommodations and private property with owner's permission. Be sure to check with the place you're staying to see if they allow consumption on their property.
- + Marijuana is still prohibited on all federal lands and waters, including Glacier National Park, Flathead National Forest, and Glacier Park International Airport.
- + If you buy it here, be sure to consume it here or dispose of it properly before you leave. Crossing state lines or flying with marijuana is illegal.
- + Driving Under The Influence (DUI) laws apply to marijuana and alcohol. Don't do it.

DISPENSARIES

Big Mountain Botanicals

Cannabis Dispensary
5932 Highway 93 South
bigmountainbotanicals.com

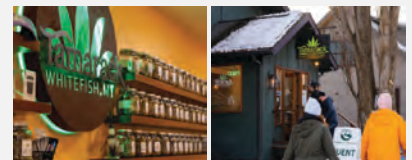
CANNABIS COUNTER



Cannabis Counter Recreational dispensary, all experience levels welcome!

The Cannabis Counter is an organic craft cannabis dispensary. We pride ourselves in creating a welcoming environment for everyone—from the occasional edible eater all the way to the cannabis connoisseur! All of our cannabis is Clean Green Certified and locally grown in organic living soil, with no chemicals or pesticides ever!

**406-730-7992; 404 East First Street
cannabiscounter.com**



Tamarack Cannabis Premium Cannabis Dispensary & Glass Shop

Voted Best Dispensary in Montana, Whitefish and the Flathead Valley, Tamarack Cannabis is the premiere seed-to-sale dispensary providing organic, top-shelf cannabis products since 2009. Tamarack Cannabis won top honors in Whitefish for Best Local Product, Best Customer Service, Most Philanthropic Business and Best Employer, among all business types.

**406-730-2599; 235 East First Street
tamarackcannabis.com**



Looking over The Lodge at Whitefish Lake with Big Mountain in the distance

RELAXATION WILL COME EASY after a full day exploring Whitefish and its surroundings. A broad selection of unique lodges, inns, hotels, guest ranches, condos, and vacation homes provide a variety of places to rest and relax. Whether in town, along Whitefish Lake, or on the mountain, you'll experience convenience, comfort, and warm Whitefish hospitality at every turn.

No matter your preferences or budget, our lodging options cater to all tastes, ranging from lavish luxury to a basic no frills experience. Each host strives to embody the welcoming spirit that defines Whitefish. Plus, with many properties conveniently located near free S.N.O.W. Bus stops, accessing ski slopes, shopping districts, and more is a breeze!

Whitefish is a small town in a good way.

~ Chadd Scott, Forbes.com



Clydesdale Outpost

Photo upper right courtesy MOTBD, Photo bottom right © Noah Couser (courtesy of The Firebrand Hotel). All other photos courtesy of each respective property



The Pine Lodge



Outdoor fire at The Lodge at Whitefish Lake



Après Whitefish



Five Star Rental's private cabana at a vacation home



Fireplace at Hidden Moose Lodge



Firebrand Hotel

ICON KEY FOR STAY LISTINGS

- | | | | | | | |
|---|-------------------------------|---------------------|-------------------|---------------|---------------------------|--------------------|
| \$\$\$ \$=VALUE PRICE
\$\$=MIDDLE PRICE
\$\$\$=DELUXE PRICE | UNIVERSAL ACCESS | RESTAURANT ON-SITE | LAUNDRY ON-SITE | COURTESY VAN | S.N.O.W. BUS STOPS NEARBY | GREAT FOR WEDDINGS |
| DAILY MAID SERVICE | FIREPLACE | ROOM SERVICE | EVENING TURN-DOWN | PETS ALLOWED | EXERCISE FACILITY | SWIMMING POOL |
| CONTINENTAL BREAKFAST INCLUDED | FULL BREAKFAST INCLUDED | HISTORICAL AMBIANCE | RUSTIC AMBIANCE | AWARD-WINNING | MEETINGS AND CONFERENCES | HOT TUB |
| GOURMET BREAKFAST INCLUDED | EVENING REFRESHMENTS INCLUDED | | | | | |

All properties listed have wi-fi access. Per Montana state law, all lodging properties are non-smoking.

APRÈS WHITEFISH MT.

Après Whitefish

Downtown Whitefish off the Whitefish River



Après Whitefish is a thoughtfully curated, boutique hotel for the adventurous traveler. As a conscious, community-centered hotel, we're about aligning with your values as a traveler and getting you as close to feeling like a local as it gets. Our amenities include an outdoor wood-burning sauna, lobby espresso bar serving locally roasted coffee drinks, and cozy indoor/outdoor lounge with a record player.

406-862-8255 • 800 Spokane Avenue • apreswhitefish.com



Bailey's Bed'n Bale

Whitefish's Most Unique Vacation Home



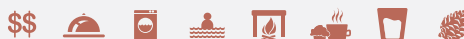
Our spacious 3-bedroom farmhouse with a bonus loft sits at the base of the Whitefish Mountain Range. We are literally feet away from miles of the best hiking and mountain biking trails in Whitefish and only three country miles from downtown Whitefish! We're pet-friendly, too. Lot's of extra touches that sets us apart from all the others... come stay with us and experience Montana that you won't soon forget.

406-270-1603 • 475 Timber Doodle Lane • montanabednbale.com



Bar W Guest Ranch

4 Miles West of Whitefish



Bar W Guest Ranch will treat you to true Montana hospitality from the moment you arrive until long after the sun sets. Bar W is located in stunning Northwest Montana, at the base of Spencer Mountain, nestled between pine-covered ridges. The ranch is near the vibrant town of Whitefish and 30 miles from Glacier National Park. Arrive as guests, leave as family!

406-863-9099 • 2875 Highway 93 West • thebarw.com



BaseGlamp

15 Minutes North of Downtown Whitefish



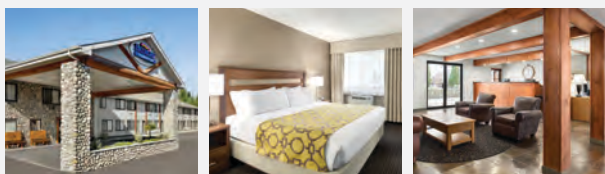
BaseGlamp features 12 unique geodesic domes along with a central dome with exceptional amenities. After returning from a day of hiking, biking, or skiing, relax with a hot shower, warm yourself by the campfire, or soak in your own cedar hot tub.

767 Lupfer Road • baseglamp.com



Baymont by Wyndham Whitefish

Montana Hospitality & Rocky Mountain Scenery



Whether you're in town for business or pleasure, you'll sleep well thanks to crisp sheets and a guest room designed to block out light and sound. We're close to the area's top attractions such as Glacier National Park, Whitefish Lake State Park, and shopping and dining on Central Avenue.

406-862-4020 • 6390 US Highway 93 South
wyndhamhotels.com/baymont/whitefish-montana/baymont-inn-suites-whitefish/overview

Photos courtesy MOTIBD



Central Avenue, Whitefish

FAST FACTS ABOUT WHITEFISH

- + Elevation of town: 3,033 feet
- + Big Mountain summit elevation: 6,817 feet
- + Number of marked ski runs on Whitefish Mountain Resort: 111
- + Skiable Acres at Whitefish Mountain Resort: 3,000
- + Average annual snowfall in town: 72 inches
- + Average snowfall on Big Mountain: 300 inches
- + Whitefish is 65 driving miles from the US / Canada border
- + Six peaks in Glacier National Park are higher than 10,000 feet
- + Whitefish Lake is 7 miles long x 2.5 miles wide
- + Deepest point in Whitefish Lake: 222 feet deep
- + Nearby Flathead Lake is the largest natural freshwater lake west of the Mississippi River, 370 feet deep x 27 miles long x 15.5 miles wide



Sunset on Whitefish Lake

BEST SPOTS TO CATCH THE SUNSET

- + Valley Overlook on the Whitefish Trail (Reservoir Trailhead)
- + Lake McDonald in Glacier National Park
- + The Belvedere Rooftop Garden at 101 Central
- + City Beach on Whitefish Lake
- + While sipping a cocktail at the Tiki Bar



THE FIREBRAND

DOWNTOWN WHITEFISH BOUTIQUE LODGING

Bar + Restaurant / Coffee Bar / Outdoor Patio / Rooftop Patio + Hot Tub / Spa

650 EAST THIRD ST. WHITEFISH | 406.863.1900 | FIREBRANDHOTEL.COM



Luxury resort on beautiful Whitefish Lake.

Classic Lodging | Lakefront Condominiums | Luxury Homes
 Boat Club Bar & Dining Room | Seasonal Tiki Bar & Marina | Spa
 Indoor Hot Tub & Pool | Lakeside Hot Tub & Seasonal Pool | Shuttle

1380 WISCONSIN AVE. WHITEFISH | 877.887.4026 | LODGEATWHITEFISHLAKE.COM



Best Western Rocky Mountain Lodge

Close to Downtown and Area Activities



The Best Western Rocky Mountain Lodge features all newly renovated guest rooms, including fireplace and jacuzzi suites to make your winter ski getaway perfect. Enjoy our complimentary hot breakfast, game room, heated pool and hot tub, and much more. Perfectly located close to downtown Whitefish, and only half an hour to Glacier National Park, the Rocky Mountain Lodge can be your ideal home away from home.

406-862-2569 • 6510 Highway 93 South • bestwestern.com



Clydesdale Outpost

Boutique Guest Ranch with Clydesdale Horses



Clydesdale Outpost is an idyllic retreat that offers an unparalleled guest ranch experience. Guests can relax in the luxurious comfort of our private, 2-bedroom cabins, each of which has been meticulously designed and decorated to reflect the natural beauty of the surrounding landscape and with their own cedar hot tubs on the back deck, nestled amidst untouched fields where majestic Clydesdale horses roam.

406-407-8983 • 100 Outpost Drive • clydesdaleoutpost.com



The Duck Inn Lodge

Located Along the River and Close to Town



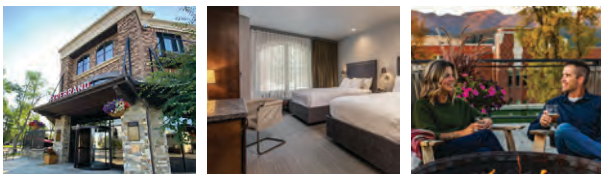
Come enjoy the warmth of The Duck Inn Lodge while you play in the mountains! The Duck Inn Lodge is your relaxing getaway for Whitefish and Glacier National Park! Our fifteen room inn is quaint and relaxing with beautiful, unique furnishings featuring a king bed, queen bed or queen/twin combo in the room. This place will make you feel like you're right at home and you may never want to leave.

406-862-3825 • 1305 Columbia Avenue • duckinn.com



The Firebrand Hotel

Downtown Corner of Spokane and Second



The Firebrand's bold and adventurous style reflects urban sophistication and Montana's rugged landscapes. Amenities to indulge travelers include a coffee bar, spa services, and a rooftop patio with hot tub. Ignite your senses at the Firebrand Restaurant, offering on-the-go breakfast, dinner, and a full bar with happy hour daily.

406-863-1900 • 650 East Third Street • firebrandhotel.com



Five Star Rentals of Montana

Accommodations on the Mountain, Lakeside, and Downtown



Five Star Rentals is locally owned and located in the heart of Whitefish—providing accommodations for almost 30 years! We invite you to rent a lake home, mountain chalet, or be in downtown Whitefish—with furnished and unfurnished options. Amenities include BBQ's, decks, docks, canoes, kayaks, hot tubs, air-conditioning, steam rooms, designer furnishings and spectacular Montana mountain views.

406-862-5994 • 704 Baker Avenue • fivestarrentals.com



The Flat – Downtown Whitefish

Heart of Downtown Whitefish, Roomy, Big Views



The Flat is located in Downtown Whitefish and walking distance from restaurants, bars and shopping. There are 3 bedrooms, 2 bathrooms, a jacuzzi, wash basins, large commercial style kitchen and comfortable living and dining rooms (sleeps 10)! The perfect lodging to relax after a day of skiing or hiking with views of beautiful Big Mountain.

406-270-8771 • 419 East Second Street • thedowntownflat.com



Garden Wall Inn

One Block from Downtown Shops and Restaurants



“Known for superior service and attention to detail, this award-winning inn creates a sense of comfort and welcome beyond your expectations.” Five luxurious guest rooms are furnished in period antiques. Full, gourmet breakfasts showcasing local products, prepared by our chef. Great downtown location is a short walk from shops and restaurants.

406-862-3440 • 504 Spokane Avenue • gardenwallinn.com



GROUSE MOUNTAIN LODGE

Grouse Mountain Lodge

Steps from Downtown, Golf Course Views



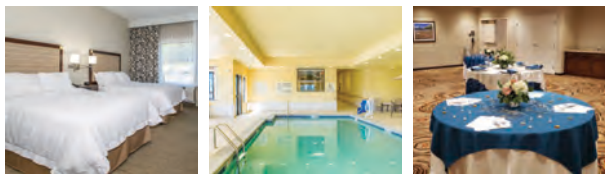
Located steps from downtown Whitefish and adjacent to the Whitefish Lake Golf Course, Grouse Mountain Lodge is a year-round destination, offering comfortable Western style accommodations and event space. The lodge features a lively restaurant, pool, hot tub and a 40-year reputation of providing truly authentic Montana hospitality.

406-862-3000 • 2 Fairway Drive • grousemountainlodge.com



Hampton Inn & Suites

Located 1 Mile South of Whitefish



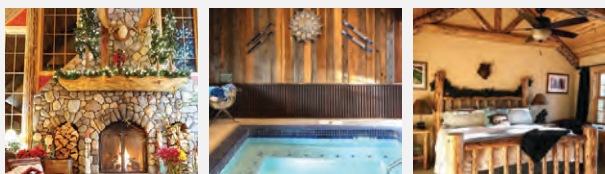
The Hampton Inn & Suites in Whitefish, Montana, is a stunning, award-winning property that perfectly captures the beauty of the surrounding landscape. Beautifully renovated, this hotel now boasts a fresh, modern design that combines elegance with the warmth of Montana hospitality, setting the tone for a comfortable and memorable stay.

406-730-8901 • 6340 Highway 93 South



Hidden Moose Lodge

2 Minutes to Downtown, 5 Minutes to Skiing



Designed and built to reflect the rustic, rugged history that is Montana, but with all the amenities that make our guests feel right at home. From the river rock fireplace located in our Great Room to the outdoor hot tub and our hearty breakfasts, you will want to make the Hidden Moose your relaxing retreat during your visit to Whitefish.

406-862-6516 • 1735 East Lakeshore Drive • hiddenmooselodge.com



Kandahar Lodge

Ski-In/Out, 10 Minutes to Whitefish



Kandahar Lodge is a charming mountain lodge located in the village of Whitefish Mountain Resort featuring world class skiing, hiking, and biking out the front door. Enjoy Kandahar's charming lobby complete with a crackling fireplace. Unwind in our Wellness Center featuring therapeutic massage, outdoor Jacuzzi, and steam room. Continental breakfast included.

406-862-6098 • 3824 Big Mountain Road • kandaharlodge.com



Lakeshore Rentals

Quality Condos, Cabins & Vacation Homes



We offer a variety of lake and mountain vacation properties for your summer or winter getaway. Whether you're coming to experience downtown, play in the lake, ski the mountain, golf the greens, fish the river, or hike in Glacier National Park—Lakeshore Rentals can find you the perfect property!

406-863-9337 • 1750 East Lakeshore Drive • lakeshorerentals.us



Larch House

Downtown Whitefish, Historic Railway District



Larch House is an independent, luxury, boutique hotel located in the historic Railway District of downtown Whitefish. The property was designed by the award-winning architecture firm, Olson Kundig, and features elevated accommodations, alpine-inspired dining and modern amenities. OPENING SUMMER 2025!

406-261-1971 • 304 East First Street • larchhouse.com



The Lodge at Whitefish Lake

On the Shore of Whitefish Lake



This AAA Four-Diamond resort is minutes from downtown, situated between Whitefish Lake and the Viking Creek Preserve. Accommodations include spacious suites, hotel rooms, lakefront condominiums, and luxury homes. The Boat Club Restaurant & Bar, Tiki Bar, Spa, indoor and outdoor pools and hot tubs, marina, and event space are on-site.

406-863-4000 • 1380 Wisconsin Avenue • lodgeatwhitefishlake.com



The Pine Lodge

Near Downtown on the Whitefish River



Conveniently located minutes from downtown, The Pine Lodge overlooks the Whitefish River and offers many amenities, including complimentary breakfast, fire pits, an indoor/outdoor swimming pool, a hot tub, a game room, and kayak, paddleboard, and bike use. Watch for our renovations and reopening as the Riverfront Hotel in spring 2025!

406-862-7600 • 920 Spokane Avenue • thepinelodge.com



Riverfront Hotel
Formerly Pine Lodge,
Reimagined and Renovated



Nestled along the Whitefish River and a short stroll from downtown, our hotel offers the perfect blend of comfort, convenience, and affordability. Whether you're exploring Glacier, skiing, paddling our river, or simply unwinding and soaking in the beauty around you, our hotel sets the stage for an unforgettable Montana getaway.

406-862-7600 • 920 Spokane Avenue • whitefishriverfronthotel.com



Snow Bear Chalets – Treehouses
Slopeside Ski-in/Ski-Out Luxury Treehouses
at Whitefish Mountain Resort



One of TIME Magazine's 100 WORLD'S GREATEST PLACES, and VRBO'S 25 ALL-TIME FAVORITE PROPERTIES! World's 1st Ski-in/Ski-out TREEHOUSES, slopeside at Whitefish Mountain Resort. Each whimsical chalet feature award-winning design, incredible views, treetop private hot tub, soaring turret with fiber-optic stars, gourmet kitchen, gas fireplace, WiFi, Sonos, down comforters, and luxury amenities.

888-8MT-BEAR or 888-868-2327 • 3872 Winter Lane • snowbearchalets.com



**SpiritWorks Farm Stay
& Retreat Center**
Holistic Healing Sanctuary Immersed in Nature



SpiritWorks Farm Stay and Retreat Center gives you the opportunity for a connection with nature in a quiet, intimate venue; conducive for reflection, meditation and, if desired, community connection. Guests have access to a private lounge, fire pit, hydrotherapy oasis, private dining area, private kitchen, hiking trails, farm tours, and complimentary medicinal teas located on an organic medicinal herb farm.

406-260-7098 • 127 Hideaway Trail • spiritworkstrilogy.com



TownePlace Suites by Marriott
One Mile from Downtown Whitefish



TownePlace Suites is an extended stay hotel in Whitefish. Located just a mile from downtown Whitefish the hotel offers full kitchens with unique style and amazing amenities. TownePlace Suites is an award winning hotel with exceptional service and guest satisfaction.

406-890-2053 • 300 Akers Lane • townplacewhitefish.com



Whitefish Bike Retreat
Trailside Lodging & Camping on Whitefish Trail



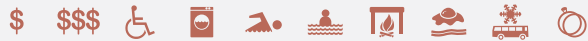
Located just outside of Whitefish, the retreat encompasses 40 acres of wilderness adjacent to the Whitefish Trail networks and offers unique and affordable lodging options including a lodge with single bunks and private rooms, a private cabin and numerous camping options. In addition to lodging, the WBR offers bike rentals, paddleboard rentals, snowshoe rentals, bikepacking bags, shuttle services, lessons and guided rides.

406-260-0274 • 855 Beaver Lake Road • whitefishbikeretreat.com



Whitefish Mountain Resort Lodging

Summer & Winter Slopeside Resort Lodging



Whitefish Mountain Resort Lodging offers a variety of on-mountain accommodations to suit any budget and all tastes in winter and summer. Relax in luxurious mountain style townhomes, stay slopeside in ski-in/ski-out condominiums, or rest a short walk away from the heart of the Village and the slopes of Big Mountain.

406-862-3687 • 3889 Big Mountain Road • skiwhitefish.com/lodging

Whitefish Slopeside Condo

Stay Right Next to the Ski Lift!



Whitefish Slopeside Condo is conveniently located at Whitefish Mountain Resort. Truly Ski-in/Ski-out on Chair 3 and close to summer fun at Glacier National Park. Luxury 2 bed/2 bath (sleeps 6) accommodation includes private hot tub, BBQ, 2 gas fireplaces, in-unit washer/dryer, fully stocked kitchen, reserved indoor parking, and fitness center.

503-799-7952 • whitefishslopesidecondo.com

KANDAHAR Lodge

at Whitefish Mountain Resort

- Bar & Restaurant on-site | Continental Breakfast
- Large Outdoor Jacuzzi | Steam Room | Fitness Center
- Free WiFi | Massage Studio | Crackling Fireplace in Lobby
- Ski-in/out | Heated Boot Room | Ski Storage

KandaharLodge.com



Kandahar Lodge | 3824 Big Mountain Road | (800) 862-6094



Jumping into the Whitefish River

WHITEFISH IS A FANTASTIC DESTINATION for dog-friendly travel, offering a wealth of outdoor adventures and stunning natural scenery. The town is surrounded by lush forests, sparkling lakes, and majestic mountains, creating an ideal playground for you and your furry friend!

When planning your visit, you'll find several accommodations that warmly welcome pets. Notable options include The Firebrand in downtown Whitefish, Pine Lodge on the Whitefish River, and Grouse Mountain Lodge, located next to the Whitefish Lake Golf Club. Some establishments provide special amenities such as dog beds and treats to ensure both you and your pup feel at home. Be sure to inform the hotel that you'll be traveling with your dog, so they can reserve a suitable pet-friendly room for your stay.

Exploring the great outdoors is a must while in Whitefish! The Fish Trails pedestrian path meanders along the Whitefish River, Whitefish Lake, and several parks, including the award-winning Whitefish Dog Park, which is perfect for giving your pup some off-leash playtime in a social environment. Whitefish also boasts miles of hiking trails suitable for various skill levels, allowing you to enjoy scenic walks or more challenging hikes with your dog. The Whitefish

Trail features several routes with breathtaking views of the mountains and lakes, while the Danny On Trail leads from the village to the summit of Whitefish Mountain Resort, providing a great workout for even the most energetic dogs.

In addition to outdoor activities, you can enhance your travel experience by sipping coffee at local cafés or enjoying a meal at dog-friendly restaurants. Visit Piggyback BBQ or The Firebrand Restaurant, where both you and your dog are welcome, and be sure to stop by Sweet Peaks for homemade ice cream specifically made for dogs!

Whether you're hiking, dining, or simply strolling through the charming town, Whitefish, Montana, promises unforgettable memories for both you and your furry companion.

~ by Edna White, *The Lodge at Whitefish Lake*



Great walks make for happy friends



Stopping at an overlook on Whitefish Trail



Alpine Theatre Project's production of "Harmony Hopefuls"

IMMERSE YOURSELF in the thriving arts and culture scene in Whitefish. Experience the talents of Broadway actors, explore galleries showcasing renowned sculptors and painters, and join monthly gallery nights from May to October to connect with local artists. Or get your own creative juices flowing at Stumptown Art Studio.

Whitefish is a hub for live music, theater, and literary events featuring local and national artists. Alpine Theatre Project and Whitefish Theatre Company stage top-notch plays and musicals.

Don't miss out on the Whitefish Review, an award-winning local literary journal that hosts readings by celebrated authors and emerging voices in poetry and literature.

In Whitefish, chefs are excited to cook the food on your plate. Musicians are eager to sing the song in their heart, young kayak guides are thrilled to take you on your first paddling excursion, and it comes across in the quality of their service. Go to support the people who are doing things for the love of it and stay for all the other fun stuff.

~ Tori Barr, SIP Magazine

FOR THE LOVE
OF THE ARTS



Alpine Theatre Project's production of "In the Mood"



Big Sky Troubadours "Jo+Friends"

Brian Schott Photography

Sports Action, Landscape, and Drone Aerial
Photography; 406-261-6190
brianschott.com

Cawdrey Gallery

Contemporary Western Fine Art Gallery
406-730-8680; 206 Lupfer, #102
cawdreycastle.com

Dick Idol Gallery

Western Painters, Sculptors, and Artists
406-862-5070; 238 Central Avenue
dickidolgallery.com

FoR Fine Art

Fine Art Gallery & Custom Framing
406-730-8855; 235 Central Avenue
forfineart.com

Glacier Symphony & Chorale

A Superb Variety of Symphonic & Choral
Music Throughout the Year
406-407-7000; glaciersymphony.org

JMac Productions

A Video & Content Creating Machine
406-499-6292; jmacvideo.com

Merie Productions

An Entertainment Production Company
Specialized in Live Concerts & Theatre
merieproductions.com

Whitefish Review

Non-profit Journal of Art, Literature, and
Photography; 406-261-6190
whitefishreview.org



Whitefish Theatre Company's annual production of "A Christmas Carol"



Whitefish Gallery Nights



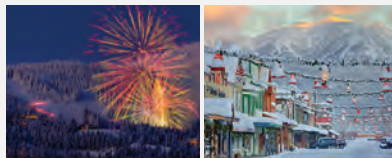
Alpine Theatre Project



Professional Theatre Featuring Actors from Broadway

Alpine Theatre Project presents world-class professional musicals, plays, and concerts featuring real Broadway and Hollywood actors, including Tony, Emmy, Golden Globe and Academy Award winners. Performances held at the Whitefish Performing Arts Center in Downtown Whitefish and other venues. It's real Broadway in the Rockies. *Photos © Brenda Ahearn*

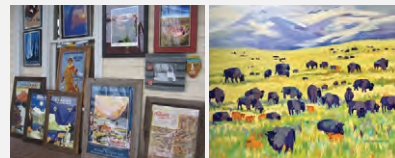
406-862-7469; Box Office Hours:
Tue.-Sat. 12-5PM & 1 hr. Before Performance
atpwhitefish.org



Chuck Haney Photography
Stock, Commercial, Editorial
Photography

Iconic Whitefish, Glacier and Montana Fine Art images on metal or acrylic surfaces by local professional photographer Chuck Haney. Chuck also offers large format coffee table books and the "Winter in Whitefish" image as Christmas cards on chuckhaney.com. Photo Tours across the U.S. and Europe.

406-261-0354
portfolios.chuckhaney.com



Custom & Ready-Made Frames

The Walking Man Frame Shop & Gallery offers custom picture framing plus unique ready-made picture frames. Our gallery features contemporary regional artists representing a variety of mediums, including pastel, ceramic, acrylic, mixed media, oil, photography and steel/stone outdoor sculpture. Designers welcome. Find us on Facebook & Instagram!
 Open: MON-FRI 10AM-5PM

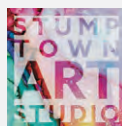
406-863-2787; 305 Baker Avenue
thewalkingmanframeshop.com



Whitefish Songwriter Festival

Big Sky Troubadours, a Whitefish-based music production team, brings world-class songwriters to Whitefish to share their original songs, the stories and inspiration behind those songs, and insights into the Nashville scene. Shows include multiple JO+FRIENDS, and the Whitefish Songwriter Festival scheduled for 3 days in downtown Whitefish, September 19 - 21, 2025.

FOR INFORMATION & TICKETS:
cari@bigskytroubadours.com
bigskytroubadours.com



Whitefish, Montana's Non-Profit
Community Art Center

Walk in anytime to paint pottery, fuse glass or shop our art supplies and local art section! Visit our website for a schedule of art classes, guest artist workshops and community art parties. Call to book the studio for your private events. Local artists are exhibited monthly in our art gallery. Open every day!

406-862-5929; 145 Central Avenue
stumptownartstudio.org



Community Theatre,
Performing Arts Center

Whitefish Theatre Company is celebrating its 46th season of bringing the performing arts to the Flathead Valley. WTC operates the 328-seat O'Shaughnessy Center in downtown Whitefish and presents a diverse season of theatre productions, music concerts, and special events.

Box Office hours: MON-FRI 11:00AM-3:00PM

406-862-5371; 1 Central Avenue
whitefishtheatreco.org

Driven by a passion for the theatre and a desire to affect the quality of life here.

~ Olympia Dukakis, Academy Award Winning Actress, speaking on Alpine Theatre Project



Holiday decorations adorn downtown Whitefish



Christmas Stroll on Central Avenue



Early photo of Winter Carnival Royalty

HISTORY OF THE HOLIDAYS

~ by Zak Anderson

The holidays are celebrated with a distinctive, community-driven flair in Whitefish. Since its incorporation as a city in 1905, Whitefish residents have packed their calendars with fun activities and social gatherings—they even created their own mid-winter holiday weekend, the Whitefish Winter Carnival. So when it comes to celebrating holidays the town goes “all in.” These events not only mark the seasons but also bring the community together, creating an atmosphere of joy and unity that lasts all year.

Christmas in Whitefish is an enchanting experience. The Christmas Stroll, held in the heart of downtown, has been a cherished tradition for decades. Residents and visitors come together to enjoy live holiday music, visit with Santa, and participate in holiday shopping along Central Avenue, which transforms into a winter wonderland of twinkling lights and festive décor. The celebration extends to the Whitefish Mountain Resort, where Santa’s Torchlight Parade illuminates

the slopes on Christmas Eve. Skiers descend the mountain with torches, followed by fireworks, adding a magical touch to the holiday season.

As the year turns, New Year’s Eve brings another beloved tradition to Whitefish. The Torchlight Parade at the resort continues, this time celebrating the arrival of the new year. Following the parade, a dazzling fireworks display lights up the night sky over the snow-capped peaks, while families gather to watch and celebrate. The event captures the adventurous spirit of the town and provides an exhilarating start to the new year’s celebrations across town.

Another major highlight of Whitefish’s festive calendar is the Whitefish Winter Carnival, a beloved tradition that has delighted the community for over six decades. Taking place in February, this lively event celebrates the town’s Nordic heritage and is filled with quirky, fun traditions like the coronation of King Ullr, the Viking god of snow, and Queen

of the Snows. The carnival features a grand parade, ice sculptures, and a variety of activities like the Penguin Plunge, where brave participants jump into the freezing waters of Whitefish Lake. The celebration captures the town's playful spirit, drawing thousands of visitors and locals to embrace the magic of winter in true Whitefish fashion.

Summer in Whitefish is just as lively, with 4th of July festivities that are a highlight of the year. The Independence Day celebrations are centered around Whitefish Lake, where locals and visitors alike enjoy an unforgettable fireworks display reflecting off the water. Families gather at City Beach for a day of barbecues, swimming, and music, culminating in the spectacular fireworks show put on by the Fire Department. The festive atmosphere underscores the community's love for the outdoors and patriotism.

Halloween in Whitefish is a spooky and fun-filled affair. Known for its creativity, the town hosts a range of events, including costume contests, pumpkin carving, and "Haunted Hayrides." Halloween in Whitefish is a much-anticipated event, known as the premier



4th of July fireworks at Whitefish Lake's City Beach

Photo left © Chuck Haney.com, Photo bottom left © Brian Schott, Photo right © Chuck Haney / MOTBD



Winter Carnival Parade

trick-or-treating destination in the Flathead Valley. For years, families from neighboring communities flock to downtown Whitefish, where local businesses hand out candy to hundreds of costumed children. The tradition has grown so much that it's become a regional draw, with festive decorations lining the streets, and creative costumes stealing the show. The event creates a safe, family-friendly environment that embodies the town's welcoming spirit and adds a touch of whimsy to the spooky season.

In Whitefish, each holiday is more than a date on the calendar—it's a communal celebration that brings people together. Whether it's the festive lights of Christmas, the excitement of a New Year's, The Winter Carnival parade, the patriotic joy of the 4th of July, or the spooky fun of Halloween, the town's "all in" spirit makes each holiday season brighter and more meaningful for everyone.

WINTER

- + **Downtown Whitefish Holiday Decorations** - November 24
- + **Whitefish Christmas Stroll** - December 13
- + **Whitefish Winter Carnival** - January 11 – February 8

WHITEFISH MOUNTAIN RESORT EVENTS: skiwhitefish.com/events

- + **Whitefish Mountain Resort Open** - December 5 – April 6
- + **Santa's Christmas Eve Torchlight Parade & Gift Giveaway** - December 24
- + **New Year's Eve Torchlight Parade & Fireworks** - December 31
- + **Biggie Banks Series (banked slalom)** - January 25, March 1 & 15
- + **Tommy Moe Kids Race League** - January 19 & 26, February 16
- + **Whitefish Whiteout** - February 8
- + **President's Weekend Torchlight Parade & Fireworks** - February 15
- + **Nate Chute Boardercross & Banked Slalom** - March 22
- + **Closing Weekend Pond Skim** - April 5
- + **S.N.O.W. Bus Winter Brewfest** - March 29

SPRING

- + **Clean the Fish Annual Whitefish Clean Up** - April or May (TBA)
- + **Whitefish Marathon, Half-Marathon & 5k** - May 17
- + **Whitefish Gallery Nights** - Every First Thursday: May 1 – October 2
- + **Downtown Whitefish Farmer's Market** - Every Tuesday: May 27, June
- + **Going-to-the-Sun Road Hiker/Biker Season** - May – mid-June (TBA)

SUMMER

- + **Whitefish Woody Weekend** - June (TBA)
- + **Whitefish Triathlon** - June 28
- + **July 4 Fireworks at Whitefish City Beach** - July 4
- + **Whitefish Arts Festival** - July 4–6
- + **Under the Big Sky Music Festival** - July 18–20
- + **The Last Best Ride** - July 27
- + **Big Mountain Run by Glacier Nordic Club** - July (TBA)
- + **Huckleberry Days Art Festival** - August 8–10
- + **Whitefish Legacy Partners Hootenanny** - August (TBA)
- + **S.N.O.W. Bus Summer Brewfest** - August (TBA)
- + **Downtown Whitefish Farmer's Market** - Every Tuesday: June, July, August
- + **Whitefish Gallery Nights** - Every First Thursday: May 1 – October 2

FALL

- + **Whitefish Food & Wine Festival** - September (TBA)
- + **Whitefish Songwriter Festival** - September 19–21
- + **Downtown Whitefish Farmer's Market** - Every Tuesday: September
- + **Great Northwest Oktoberfest** - October 2–4 & 9–11
- + **Whitefish Trail Legacy Run** - October (TBA)
- + **Downtown Halloween Costume Contest** - October 31
- + **Whitefish Gallery Nights** - Every First Thursday: May 1 – October 2



Check out our events calendar online for more live music, performances, and great events happening all year long: explorewhitefish.com/events



101 Central's "The Second Story"

WHITEFISH OFFERS THE IDEAL MIX of productivity and rejuvenation for meeting and special event attendees. Nestled between Glacier National Park and Whitefish Mountain Resort, Whitefish provides a serene, inspiring backdrop that encourages creativity, collaboration, and connection. Whether you're organizing an intimate corporate retreat, a large-scale conference, or a social celebration, Whitefish has everything you need to make your event unforgettable.



Grouse Mountain Lodge



Whitefish Performing Arts Center



Whitefish Theatre Company

TOP REASONS TO HOST YOUR NEXT EVENT IN WHITEFISH

Accommodations for Every Occasion: Whether it's a business gathering or a personal milestone, Whitefish has a wide range of lodging options to meet your needs. From luxurious mountain lodges to charming inns, there's a unique stay for every group and budget.

Expert Planning Assistance: The dedicated team at Explore Whitefish is here to guide you every step of the way. They'll help you select the perfect venues, connect you with local partners, and ensure your event is executed flawlessly.

Inspiring Off-Site Activities: Whitefish is renowned for its natural beauty, offering attendees a wealth of opportunities to unwind and recharge. From hiking scenic trails to exploring the waters of Whitefish Lake, there's no shortage of activities to enhance the event experience.

Wellness Opportunities: Prioritize relaxation and well-being with Whitefish's numerous wellness options, including spa treatments, yoga sessions, and nature-based mindfulness activities. It's the perfect way to keep attendees refreshed and focused.

Unique & Memorable Experiences: In Whitefish, your event will be anything but ordinary. Our vibrant mix of outdoor adventure, cultural attractions, and world-class dining creates a one-of-a-kind experience that leaves a lasting impression on every guest.

Traditional Hotels, Lodges and Special Event Venues: Whitefish offers a variety of venues to suit events of all sizes and styles, from modern conference spaces to rustic mountain lodges.

Featured Venues:

- + Grouse Mountain Lodge
- + Kandahar Lodge
- + The Larch House (opening summer 2025)
- + The Lodge at Whitefish Lake
- + The O'Shaughnessy Center
- + The Patio
- + The Second Story at 101 Central
- + Whitefish Mountain Resort

Local Dining Experiences for Meetings & Special Events: Whitefish's vibrant dining scene ensures there's something for every occasion, from welcome receptions to farewell brunches. Host your group dining events at one of our top locations, where exceptional food meets unforgettable ambiance.

Featured Dining Venues:

- + Amazing Crepes
- + Beldi Restaurant Whitefish
- + The Belvedere at 101 Central
- + The Boat Club Restaurant
- + Craggy Range
- + The Firebrand Restaurant
- + Latitude 48 & Red Room Lounge
- + Mambo's Italian Kitchen

By choosing Whitefish for your next meeting or special event, you'll give your guests the gift of both productivity and relaxation, surrounded by breathtaking scenery and unmatched hospitality. For help in planning your event, visit explorewhitefish.com/plan



The Lodge at Whitefish Lake

Lodging Venues	Total # of Guest Rooms	Sleeping Rooms	Suites	Private Event Space	Semi-Private Event Space	Full Buy-Out Event Space	Outdoor Space Available	Total # of Meeting & Event Rooms	Event Space Total Sq. Ft.
Firebrand Hotel 650 East Third Street	89	-	-	✓	✓	✓	-	3	1,748
Grouse Mountain Lodge 2 Fairway Drive	143	8	12	✓	✓	✓	✓	8	11,000
Kandahar Lodge 3824 Big Mountain Road	50	-	1	✓	✓	✓	✓	2	1,050
The Larch House 304 East First Street <i>Opening Summer 2025</i>	18	39	21	✓	✓	✓	✓	4	TBD
The Lodge at Whitefish Lake 1380 Wisconsin Avenue	165	225	87	✓	✓	✓	✓	7	10,788
Whitefish Mountain Resort 3889 Big Mountain Road	98	-	44*	✓	✓	-	✓	2	989

*Includes 20 1-bedroom condominiums and 24 2-bedroom condominiums



UNFORGETTABLY
♦♦♦ GREAT EVENTS ♦♦♦

Photos courtesy of each respective property

Largest Room Sq. Ft.	Banquet Capacity	Classroom Capacity	Theater Capacity	Reception Capacity	Distance to Whitefish Mtn. Resort	Distance to DOWNTOWN Whitefish	Contact Information
750	48	32	80	50	7 mi.	0 mi.	Grace Flanigan , Hotel, Catering and Meeting Events 406-863-1907 • grace@firebrandhotel.com firebrandhotel.com/plan
3,520	225	250	275	300	8.4 mi.	1.2 mi.	Kayla Hartley , Weddings & Events khartley@pursuitcollection.com Erik Rowe , Sports & Teams erikrowe@pursuitcollection.com Barbara Moran , Corporate / Reunions bmoran@pursuitcollection.com
800	40	40	50	60	0 mi.	7 mi.	Tiffany Nitschke 406-862-6098 • tiffany@kandaharlodge.com kandaharlodge.com/groups-weddings
TBD	150	-	-	150	6 mi.	0 mi.	Ms. Ryan Fuller , Hotel, Catering and Meeting Events info@larchhouse.com larchhouse.com
6,366	350	300	400	400	5 mi.	1.5 mi.	Morgan Nordahl , Hotel, Catering and Meeting Events 406-863-4041 • morgan@averillhospitality.com lodgeatwhitefishlake.com/plan
989	80	80	80	200	0 mi.	7 mi.	For more information regarding Meeting & Special Events, please contact skiwhitefish.com/group-inquiry-form



Grouse Mountain Lodge



Grouse Mountain Lodge's Logan Grill



The Summit of Whitefish Mountain Resort

Additional Venues	Special Event Venue	Theater & Music Venue	Restaurant Venue	Private Event Space	Semi-Private Event Space	Full Buy-Out Event Space	Outdoor Space Available	Total # of Meeting & Event Rooms	Event Space Total Sq. Ft.
101 Central 101 Central Avenue	✓	✓	✓	✓	✓	✓	✓	3	3,281
Amazing Crepes 123 Central Avenue	-	-	✓	✓	✓	✓	-	1	900
Beldi Restaurant 306 East Second Street	-	-	✓	-	-	✓	-	1	2,000
Blackstar 2 Central Avenue	✓	-	✓	✓	✓	✓	-	2	12,000
Clydesdale Creamery 16 Baker Avenue	-	-	✓	-	-	✓	-	1	800
Latitude 48 Bistro 147 Central Avenue	-	-	✓	-	✓	✓	-	1	
The Patio 204 Wisconsin Avenue	✓	-	-	-	✓	✓	✓	-	-
Red Room Lounge at Latitude 48 Bistro 147 Central Avenue	-	-	✓	-	✓	✓	-	1	
Whitefish Performing Arts Center 127 Spokane Avenue	✓	✓	-	✓	✓	✓	-	2	
Whitefish Theatre Company 1 Central Avenue	✓	✓	-	✓	✓	✓	-	3	

Recommended Service Providers

Forge Catering

Special Event Catering
 Sam and Sarah Bassett
 406-471-7695 • forage406@gmail.com
 foragecatering406.com
 Professional catering services for your private home dinner party, wedding or event where delicious locally sourced cuisine is desired.



Photos courtesy of each respective property

Largest Room Sq. Ft.	Banquet Capacity	Classroom Capacity	Theater Capacity	Reception Capacity	Distance to Whitefish Mtn. Resort	Distance to DOWNTOWN Whitefish	Contact Information
1,400	125	75	75	125	6.5 mi.	0 mi.	Laurie Andrade , Event & Sales Director laurie@101centralwhitefish.com herbandomni.com
900	50	-	-	50	6 mi.	0 mi.	Sara Seed , Owner 406-862-6002 • sara@amazingcrepes.com amazingcrepes.com
2,000	52	-	-	52	6.5 mi.	0 mi.	406-730-1677 • info@beldiwf.com beldiwf.com
9,000	60	472	472	472	6.6 mi.	0 mi.	blackstarmt.com/private-events
800	35	-	-	35	6.5 mi.	0 mi.	yum@clydesdalecreamery.com clydesdalecreamery.com
	60	-	-	60	5.5 mi.	0 mi.	General Manager latitude@latitude48bistro.com latitude48bistro.com
-	-	-	-	-	5 mi.	0 mi.	thepatiowhitefish.com
	30	-	-	30	5.5 mi.	0 mi.	General Manager latitude@latitude48bistro.com latitude48bistro.com
					6.6 mi.	0 mi.	Micah Groschupf whitefishPAC@gmail.com whitefishpac.com
					6.6 mi.	0 mi.	Jen Asebrook 406-862-5371 • info@whitefishtheatreco.org whitefishtheatreco.org





Glacier Park International Airport with Big Mountain in the distance

WHITEFISH IS ONE OF THE CLOSEST MOUNTAIN towns to a major airport. Direct flights from numerous major cities and carriers into Glacier Park International Airport (FCA) make getting to Whitefish a breeze. Once you arrive at the airport, you're only 15 minutes from town (see map on page 63).

Travelers can also opt for a scenic rail experience aboard the Amtrak Empire Builder, which arrives at the historic Whitefish Railway Depot connecting cities like Chicago, Minneapolis, Seattle, and Portland. For those who prefer road trips, the drive to Whitefish is a picturesque journey through some of North America's most breathtaking landscapes. Easy-to-navigate roads wind their way to this mountain paradise, inviting travelers to savor the scenic beauty along the way.

S.N.O.W. BUS

During both winter and summer seasons, the S.N.O.W. Bus offers free transportation connecting the City of Whitefish and Whitefish Mountain Resort. The bus stops at many lodges, grocery stores, restaurants, Central Avenue and other locations throughout town. For the current schedule and ride map visit: bigmtncommercial.org

DRIVING TO WHITEFISH

Driving from:	mi/km	time
Glacier National Park	37/60	40 min
Missoula, Montana	136/221	2.5 h
Spokane, Washington	252/409	4.5 h
Bozeman, Montana	342/556	5.5 h
Calgary, Alberta	286/457	5 h
Yellowstone Nat'l Park	403/655	7 h
Edmonton, Alberta	440/704	8 h
Seattle, Washington	530/861	8.5 h

Road Conditions: 24-Hour road conditions are available statewide: **Call 511** or visit mdt.mt.gov/travinfo

Customs and border crossing:
 US Customs: cbp.gov
 Canada Border Services: cbsa.gc.ca



Whitefish Railway Depot



SNOW Bus

PLANNING YOUR VISIT TO GLACIER NATIONAL PARK

Glacier National Park is, without a doubt, one of the biggest draws in northwest Montana. Located just 27 miles from Whitefish (about a 40-minute drive) this national gem has over a million acres of pristine forest, rugged mountains, sprawling meadows, alpine lakes, and over 700 miles of hiking trails.

The park itself is open year-round. However, during the peak summer season, vehicle reservations are required to access two specific areas of the park (in addition to an entrance pass): the west side of Going-to-the-Sun Road and the North Fork. Find tips and guidelines below on how to get a vehicle reservation for the 2025 summer season (June 13 to September 28, 2025).

Visitors can begin making advanced reservations on February 12, 2025. New in 2025, the park will be piloting timed entry reservations for the west side of Going-to-the-Sun Road and the North Fork. Visitors will enter the park according to the time block they have reserved and can remain in the park for as long as they like on the day of their reservation.

Going-to-the-Sun Road (via the West Entrance):

One timed-entry reservation per vehicle will be required to travel Going-to-the-Sun Road east beyond the Apgar Check Point (near West Glacier) from June 13 – September 28, 2025, from 6 a.m. to 3 p.m. *Visitors can enter before 6 a.m. or after 3 p.m. without a vehicle reservation.*

North Fork (via the Polebridge Entrance Station):

One timed-entry reservation per vehicle will be required at the Polebridge entrance station June 13 through September 28, 2025, from 6 a.m. to 3 p.m. *Visitors can enter before 6 a.m. or after 3 p.m. without a vehicle reservation.*

Two Medicine Valley and St. Mary: Vehicle reservations will not be required to enter Two Medicine Valley or the St. Mary entrance to Going-to-the-Sun Road. Entry may be temporarily restricted at certain times of day when areas become too congested.

Many Glacier Valley: The Swiftcurrent area of Many Glacier Valley will be closed to public access during the summer of 2025 due to ongoing construction. The closure will greatly reduce the amount of available parking in Many Glacier Valley.



Driving the Going-to-the-Sun Road in Glacier National Park

For more information on accessing Many Glacier Valley in summer 2025, please visit <https://www.nps.gov/glac>

Making Vehicle Reservations: Vehicle reservations will only be available on Recreation.gov, the Recreation.gov mobile app, or through the Recreation.gov Call Center (Reservation Line: 877-444-6777). Each of the two specified areas of the park will require a separate reservation. Visitors will need to set up an account on Recreation.gov to obtain reservations—we recommend setting up your account well before you log on to make a reservation. Vehicle reservations are free but Recreation.gov does charge a \$2 processing fee.

Vehicle reservations will be available through two booking windows. A portion of reservations will be available 120 days or approximately four months in advance, starting on February 12, 2025, at 8 a.m. MST on a rolling basis on Recreation.gov. The remaining vehicle reservations will be available at 7 p.m. MDT for next-day entry starting on June 12, 2025.

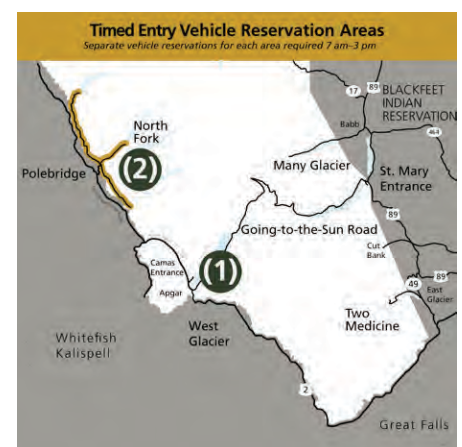
VEHICLE RESERVATION FAQ

Do I need a park entrance pass AND a vehicle reservation? Yes. First things first: You always need a park pass for every entrance to the park, this is not the same as a vehicle reservation. Next: As stated above, a vehicle reservation is only required for certain entrances in the park, West Glacier entrance and North Fork entrance, but it is NOT required for Two Medicine, St. Mary, Cutbank, or Many Glacier, for 2025. A vehicle reservation does not include an entrance pass, and the park entrance

pass does not serve as a vehicle reservation. Pursuant to the American Indian Religious Freedom Act of 1978, vehicle reservations are not required for tribal members throughout the park.

What if I am not able to get a vehicle reservation? Don't stress—there are still plenty of ways to gain access to Glacier National Park! If you missed the opportunity to get an advanced vehicle reservation, you can still try to obtain a vehicle reservation at 7 p.m. MST the day before your visit. Also—vehicle reservations are NOT required before 6 a.m., after 3 p.m. AND there are points of entry as outlined above that do not require a vehicle reservation.

If you have additional questions, please visit <https://www.nps.gov/glac/>



(1): Apgar Check Point for Going-to-the-Sun Road access via the west entrance of the park.
(2): Polebridge Entrance Station in the North Fork area of the park.



GETTING AROUND

While Whitefish is a pedestrian-friendly town, a car is a great idea to help you explore the secret stashes of Glacier National Park or locate less-traveled roads that surround Whitefish. Several leading car rental companies are available at or adjacent to the airport and also at locations within Whitefish. For those travelers without a car, consider renting a bike, hopping on the S.N.O.W. bus, or booking a trip with Whitefish Outfitters & Tours when traveling to areas outside of the scope of your hotel's shuttle.

Amtrak

Ride Amtrak Empire Builder® to Whitefish!
1-800-USA-RAIL; 500 Depot Street
amtrak.com

Budget Rent a Car

Compact to Full-Size Vehicles
406-862-8170 or 800-218-7992
803 Spokane Avenue; budget.com

Dollar Rent-A-Car

Vehicles and Vans of All Sizes.
Delivery and Pickup Available.
406-892-0009; 5506 Highway 2 West
dollar.com

FLY

★ AIRPORT CODE: FCA

Glacier Park Int'l Airport, Kalispell
Just 15 minutes from Whitefish

— NON-STOP FLIGHT

- - SEASONAL NON-STOP FLIGHTS

TRAIN

==== AMTRAK CODE: WFF

Arrives at the historic Whitefish Train Depot

Glacier Park International Airport

Gateway to Northwest Montana & Canadian Rockies
406-257-5994; 4170 Highway 2 East
iflyglacier.com

S.N.O.W. Bus

Free Shuttle Between Whitefish and Whitefish
Mountain Resort
bigmtnccommercial.org

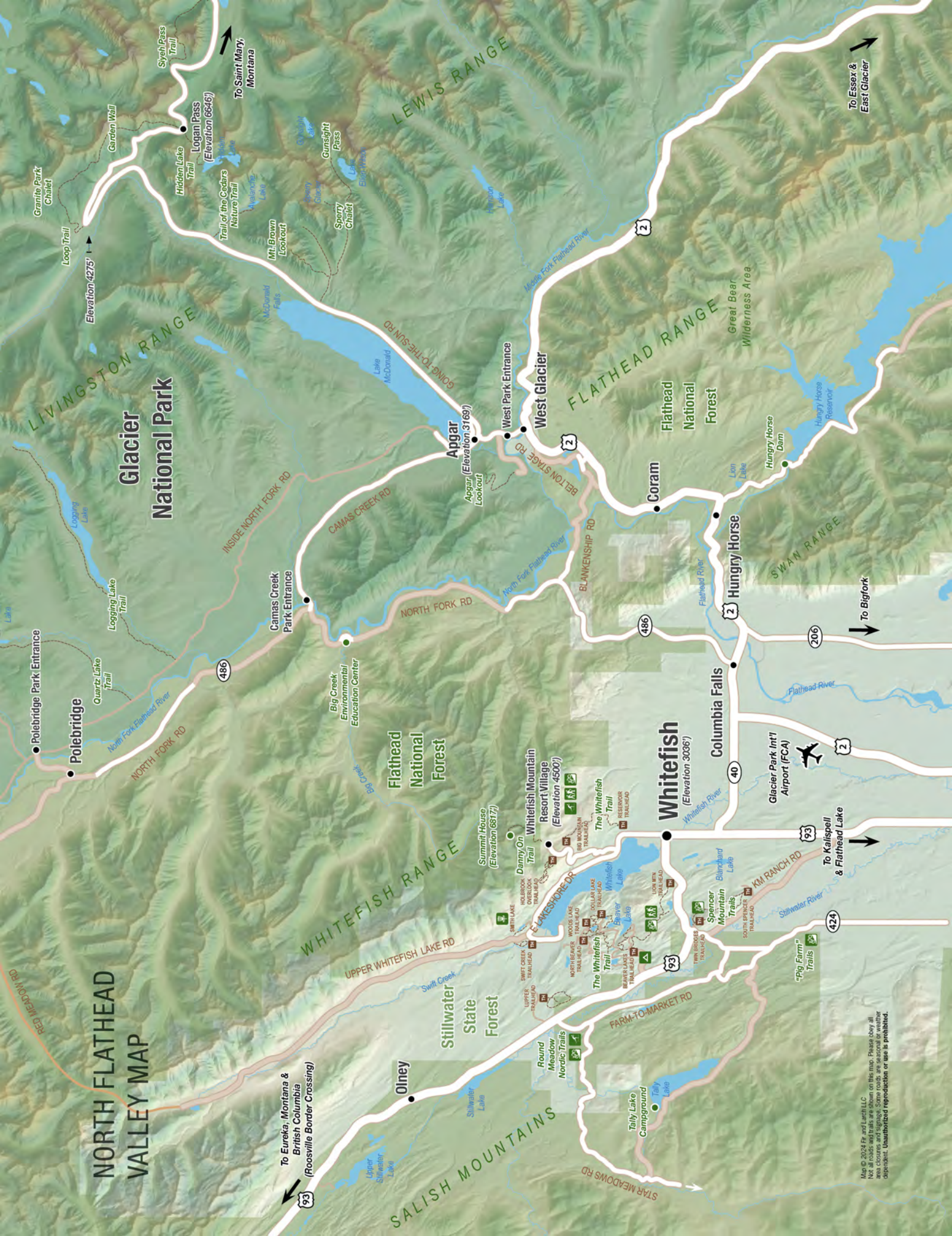
Whitefish Outfitters & Tours

Tour Company & Equipment Rentals in Downtown Whitefish
406-212-0080; 541 Spokane Avenue
whitefishoutfitters.com

TIPS FOR GETTING AROUND

- + Many hotels have shuttle service to/from the airport as well as locations throughout Whitefish
- + Reserve a shuttle to/from Glacier with Glacier Outfitters & Tours
- + Between June and September, utilize the free park shuttle system in Glacier National Park
- + Rent a car — pick up locations include the Glacier Park International Airport, and Whitefish Railway Depot train station
- + Ride-share services are available in the area but may have potentially long waits for pick up
- + Plan ahead and grab your timed-entry vehicle reservation for Glacier National Park early (see page 61)
- + If trailhead parking is full, be patient and circle back around or opt for another location—please don't park in undesignated parking areas

NORTH FLATHEAD VALLEY MAP



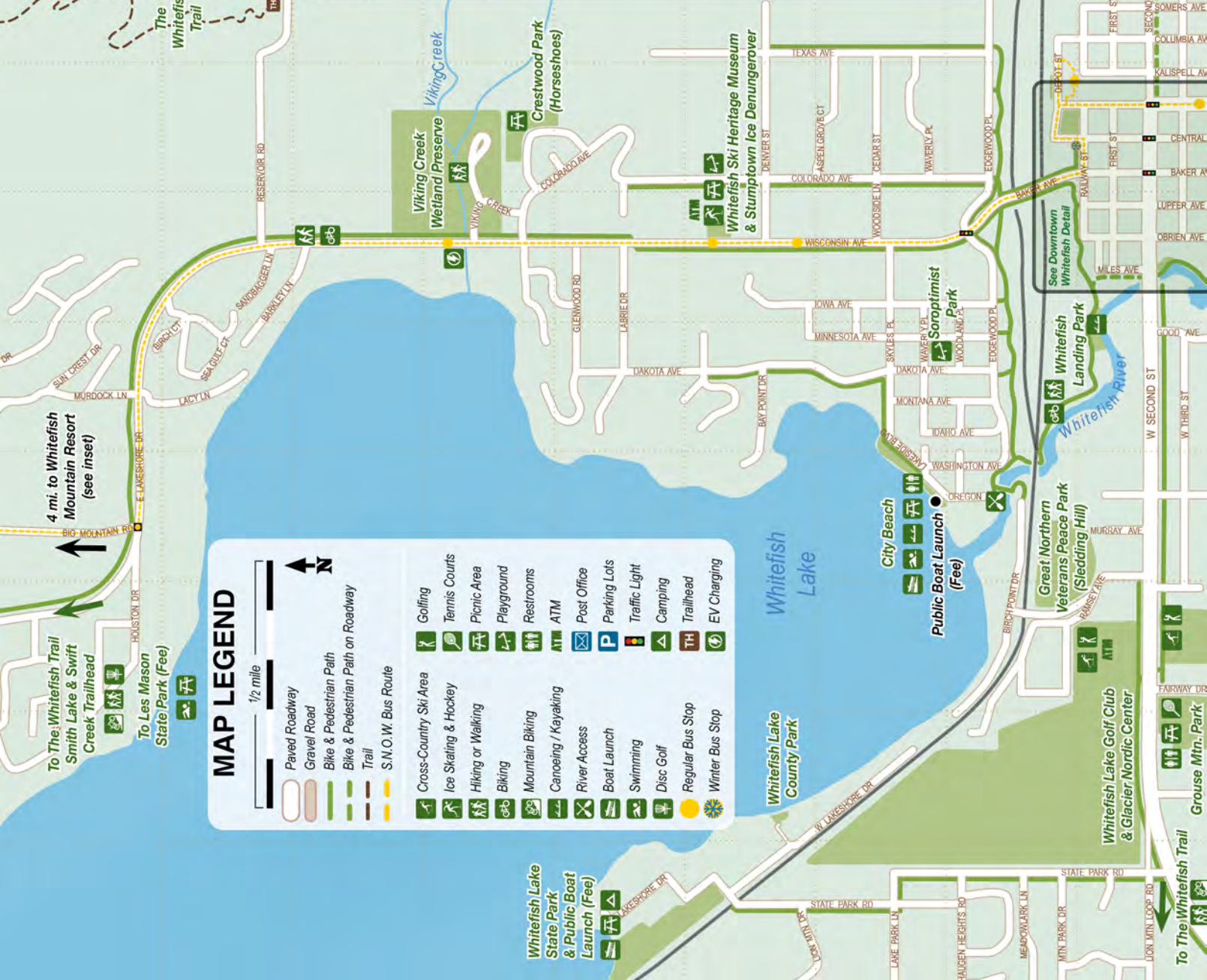
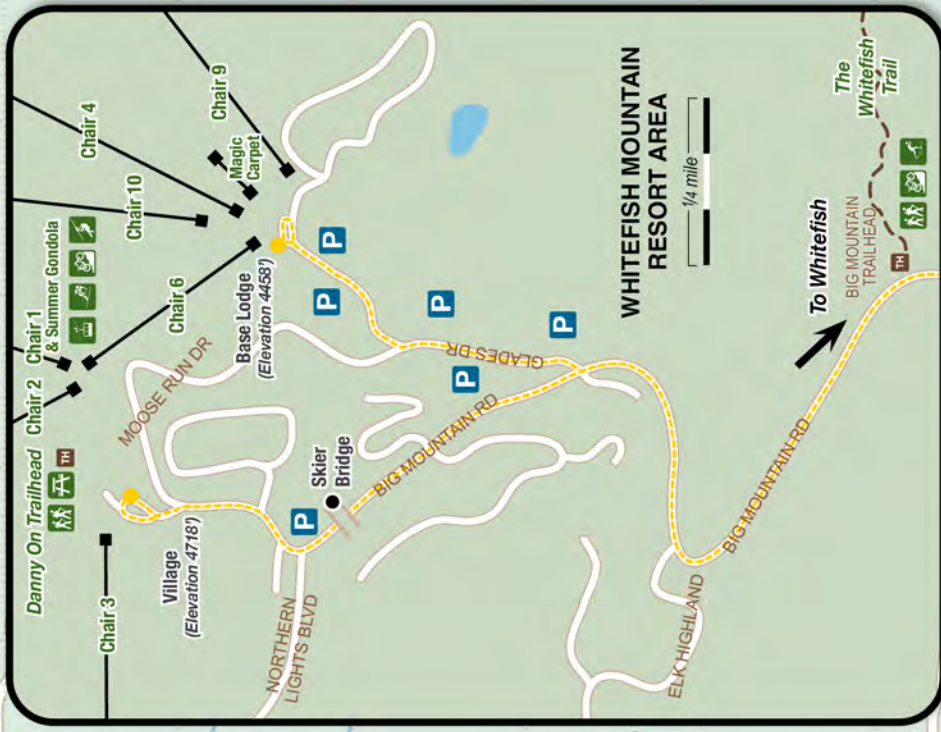
Glacier National Park

Whitefish

To Eureka, Montana & British Columbia (Roosville Border Crossing)



Map © 2024 Fr and Larch LLC
NOT all roads and trails are shown on this map. Please obey all area closures and signage. Some routes are seasonal or weather dependent. Unauthorized reproduction or use is prohibited.



MAP LEGEND

1/2 mile

	Paved Roadway		Golfing
	Gravel Road		Tennis Courts
	Bike & Pedestrian Path		Picnic Area
	Bike & Pedestrian Path on Roadway		Playground
	Trail		Restrooms
	S.N.O.W. Bus Route		ATM
	Cross-Country Ski Area		Post Office
	Ice Skating & Hockey		Parking Lots
	Hiking or Walking		Traffic Light
	Biking		Camping
	Mountain Biking		Trailhead
	Canoeing / Kayaking		EV Charging
	River Access		
	Boat Launch		
	Swimming		
	Disc Golf		
	Regular Bus Stop		
	Writer Bus Stop		

To The Whitefish Trail
Smith Lake & Swift
Creek Trailhead

To Les Mason
State Park (Fee)

4 mi. to Whitefish
Mountain Resort
(see inset)

BNSF Rail Lines and Amtrak

Memorial Field &
Ballparks

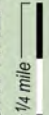
See Downtown
Whitefish Detail

Whitefish Lake Golf Club
& Glacier Nordic Center

Grouse Mtn. Park

To The Whitefish Trail

WHITEFISH MOUNTAIN
RESORT AREA



MAP LEGEND

1/2 mile



Paved Roadway

Gravel Road

Bike & Pedestrian Path

Bike & Pedestrian Path on Roadway

Trail

S.N.O.W. Bus Route

Cross-Country Ski Area

Ice Skating & Hockey

Hiking or Walking

Biking

Mountain Biking

Canoeing / Kayaking

River Access

Boat Launch

Swimming

Disc Golf

Regular Bus Stop

Writer Bus Stop

Golfing

Tennis Courts

Picnic Area

Playground

Restrooms

ATM

Post Office

Parking Lots

Traffic Light

Camping

Trailhead

EV Charging

Whitefish Lake
State Park
& Public Boat
Launch (Fee)

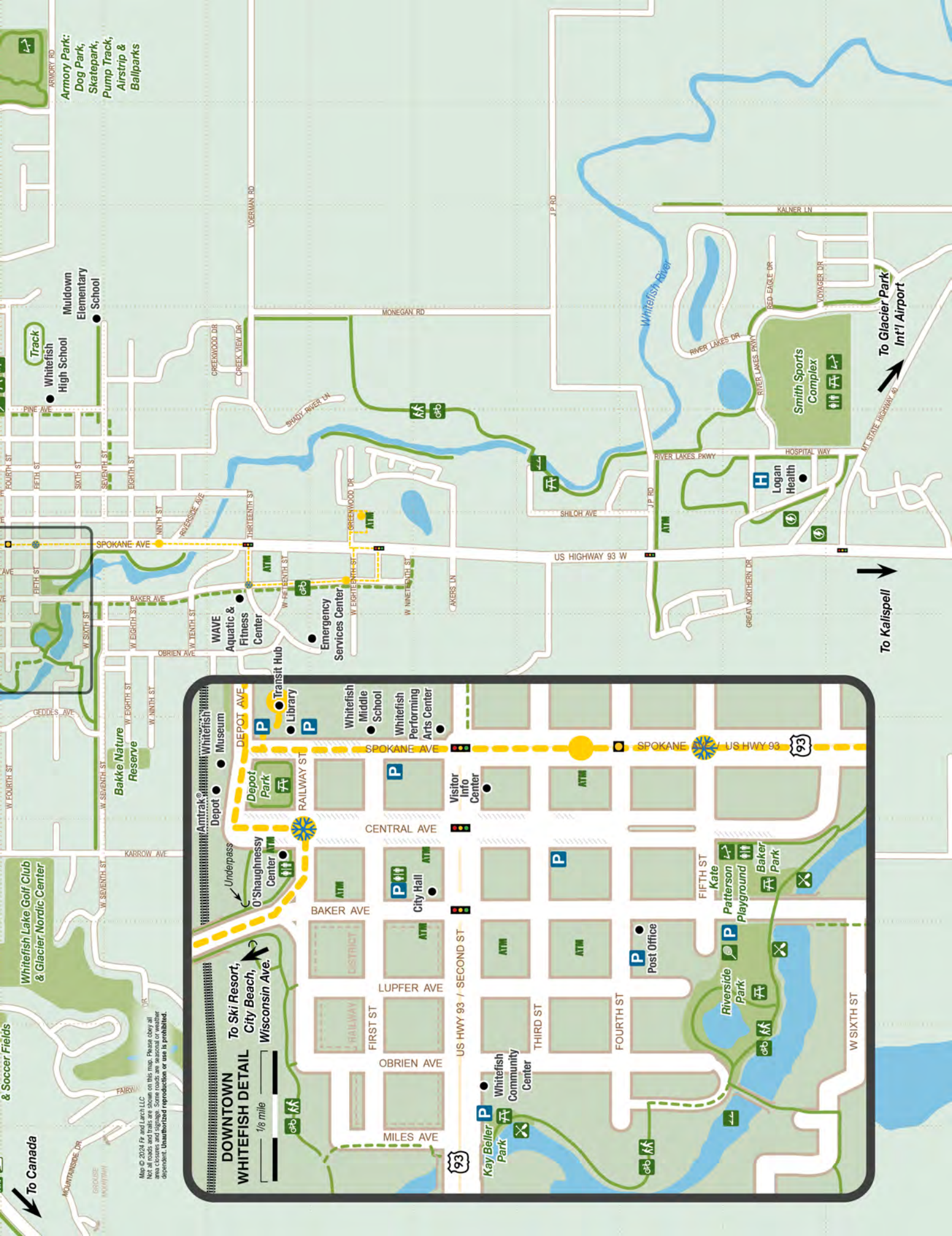
City Beach

Public Boat Launch
(Fee)

Great Northern
Veterans Peace Park
(Sledding Hill)

Whitefish Lake Golf Club
& Glacier Nordic Center

To The Whitefish Trail



Army Park, Dog Park, Skatepark, Pump Track, Airstrip & Ballparks

Whitefish High School

Muldrow Elementary School

Smith Sports Complex

Logan Health

To Glacier Park Int'l Airport

To Kalispell

To Canada

Map © 2024 Fr and Larch LLC
Not all roads and trails are shown on this map. Please obey all area closures and signage. Some roads are seasonal or weather dependent. Unauthorized reproduction or use is prohibited.

DOWNTOWN WHITEFISH DETAIL

1/2 mile

To Ski Resort, City Beach, Wisconsin Ave.

Detailed map of downtown Whitefish showing streets (Miles Ave to Depot Ave), landmarks (Amtrak Depot, City Hall, Post Office), and parks (Kay Beller Park, Riverside Park). Includes icons for ATMs, playgrounds, and transit.

Whitefish Lake Golf Club & Glacier Nordic Center

Soccer Fields

To Canada

To Kalispell

To Glacier Park Int'l Airport

To Kalispell



This must be the *place*

for your four seasons of adventure.



WHITEFISH

MOUNTAIN RESORT

WHITEFISH, MONTANA

#SKIWHITEFISH

SKIWHITEFISH.COM | 877-SKI-FISH

Partially Located on National Forest Lands
Photos © GlacierWorld.com