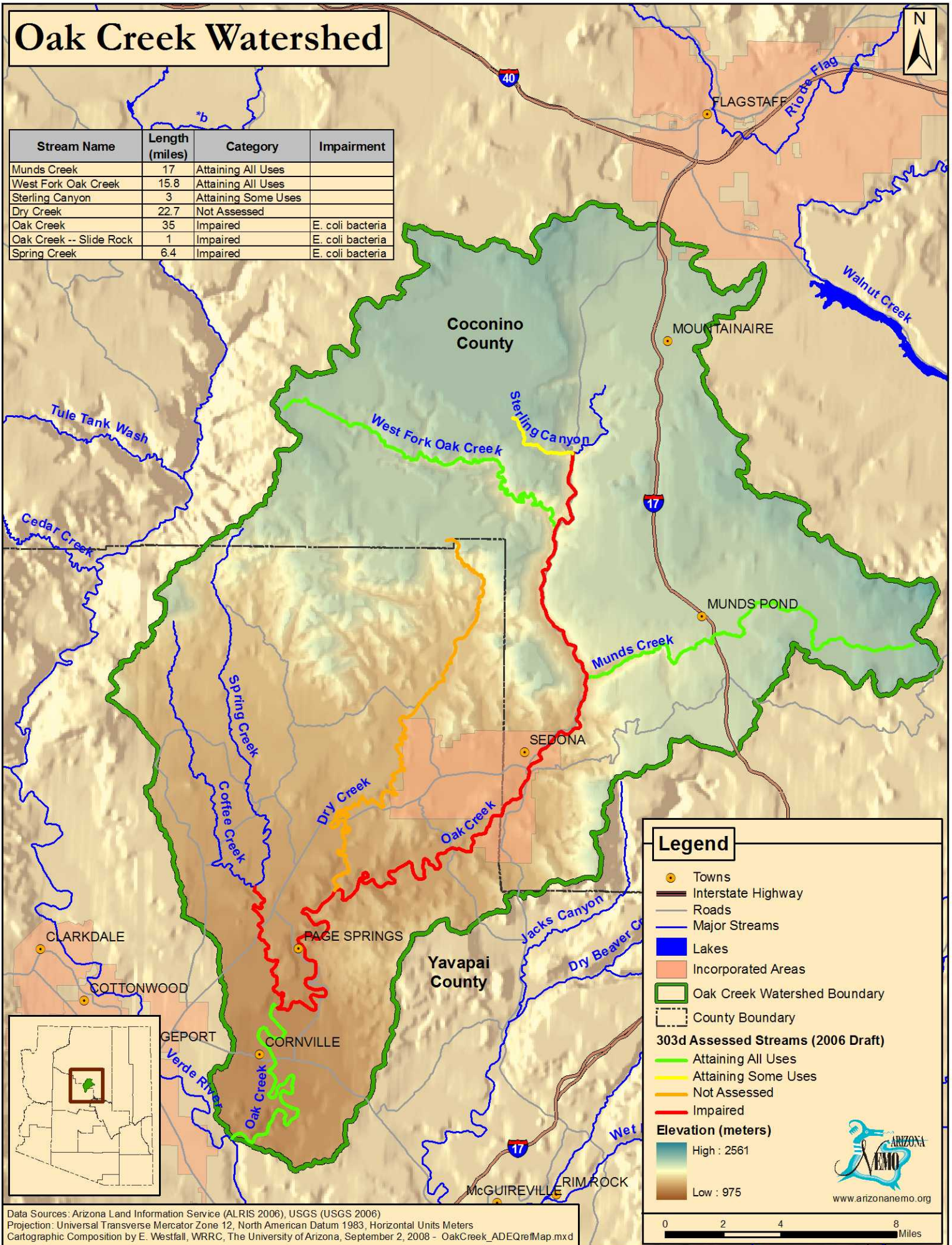


# Oak Creek Watershed



Stream Name	Length (miles)	Category	Impairment
Munds Creek	17	Attaining All Uses	
West Fork Oak Creek	15.8	Attaining All Uses	
Sterling Canyon	3	Attaining Some Uses	
Dry Creek	22.7	Not Assessed	
Oak Creek	35	Impaired	E. coli bacteria
Oak Creek -- Slide Rock	1	Impaired	E. coli bacteria
Spring Creek	6.4	Impaired	E. coli bacteria



**Legend**

- Towns
- Interstate Highway
- Roads
- Major Streams
- Lakes
- Incorporated Areas
- Oak Creek Watershed Boundary
- County Boundary

**303d Assessed Streams (2006 Draft)**

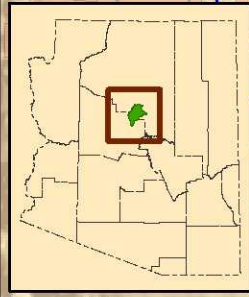
- Attaining All Uses
- Attaining Some Uses
- Not Assessed
- Impaired

**Elevation (meters)**

- High : 2561
- Low : 975

ARIZONA NEMO  
www.arizonanemo.org

0 2 4 8 Miles



Data Sources: Arizona Land Information Service (ALRIS 2006), USGS (USGS 2006)  
 Projection: Universal Transverse Mercator Zone 12, North American Datum 1983, Horizontal Units Meters  
 Cartographic Composition by E. Westfall, WRRRC, The University of Arizona, September 2, 2008 - OakCreek\_ADEQrefMap.mxd