


**MANAGED IN
PARTNERSHIP WITH:**




The Highlands Community Service Project is a nonprofit organization of adult volunteers that work with youth community service workers to develop meaningful projects for the benefit of the public.

**THE NEW JERSEY
YOUTH CORPS**



The New Jersey Youth Corps of Phillipsburg is Warren County's only full-time service and conservation corps. Helping to maintain parkland across the county, they provide hundreds of youth the opportunity to earn their GED while providing a valuable community service.

For more information, please visit:
www.njycphillipsburg.com



**WARREN COUNTY
PLANNING DEPARTMENT &
MORRIS CANAL COMMITTEE**

Wayne Dumont, Jr. Administration Bldg.
165 County Route 519 South
Belvidere, NJ 07823
Phone: 908-475-6532
www.morriscanal.org



**BREAD LOCK
PARK & MUSEUM**

**2627 Route 57 East
Stewartsville, NJ 08886**

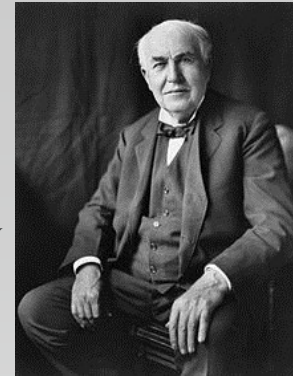


**Warren County
Department of Land Preservation
& Board of Recreation
Commissioners**

**500 Mount Pisgah Avenue
PO Box 179
Oxford, NJ 07863
Phone: 908-453-2650
Fax: 908-453-3150
www.warrenparks.com**

Edison Concrete Mile:

Over 100 years ago, the great inventor Thomas Edison decided to build a large cement plant in New Village, New Jersey for his business, the Portland Cement Company. After constantly experimenting with new uses for his concrete, Edison received permission from New Jersey's highway department to construct a one mile section of concrete highway. The original highway lasted many years until the road was redone in 1954 - leaving squares of the original concrete intact. A segment of the original highway can also be found on display at the Edison National Historic Site in West Orange, New Jersey.



This same historic roadway, now State Route 57, has also been designated the 'Warren Scenic Heritage Byway' by the New Jersey Department of Transportation. Stretching about 20-miles from Hackettstown to Greenwich, this route is one of only seven Scenic Byways in the Garden State and is known for its distinctive mountain ridges, rolling fertile valleys and streamside views, in addition to its connection with the historic Concrete Mile and Morris Canal.

Directions From Route 78:

- Take Exit 3 toward NJ-173/US-22
- Turn onto NJ-173 North; Continue onto US-22
- Turn Right on CR-519
- Turn Right onto NJ-57 and travel approximately 2.5 miles
- Entrance will be on your right.

Directions From Route 80:

- Take Exit 12 toward CR-521 South
- Follow CR-521 South to CR-519 South
- Follow CR-519 South approximately 18.5 miles
- Turn Left on NJ-57 and follow 2.6 miles
- Entrance will be on your right.

Volunteers Needed:

***Individual & Group Opportunities
For All Ages***

- Trail Building & Clearing
- Invasive Species Removal
- Construction & Maintenance
- Cleanup & Recycling
- Special Events and more!

Call (908) 453-2650 to get started!

About Bread Lock Park:

In use from the 1820s to the 1920s, the Morris Canal stretched 107 miles from the Delaware River along Phillipsburg to the Hudson River along Jersey City. Overcoming a height elevation of 914 feet, the canal was a major engineering feat of its day that was accomplished through 23 locks and 23 inclined planes.

Lock 7 West became known as “Bread Lock Park” because the store at the end of the lock sold goods to boatmen, including homemade bread and pies. While still buried, the remains of the lock itself speak to the historical significance of the site. Today, a short section of the canal has been cleared and offers a lovely walk. Visitors can also enjoy the nature and exercise trails around the perimeter of the park, as well as the Historic Learning Center.

Explore Responsibly:

- This park offers opportunities for walking, hiking, biking, and wildlife observation.
- Please stay on the marked trails and do not disturb sensitive habitats.
- Please remove and carry out any trash.
- Hunting is not permitted.
- Removal of plants, animals, wood, stone, or other natural materials is prohibited.
- Motorized vehicles, such as ATVs, and alcoholic beverages are prohibited.

A. Event Stage & Lawn



B. Boat Replica & Foundation



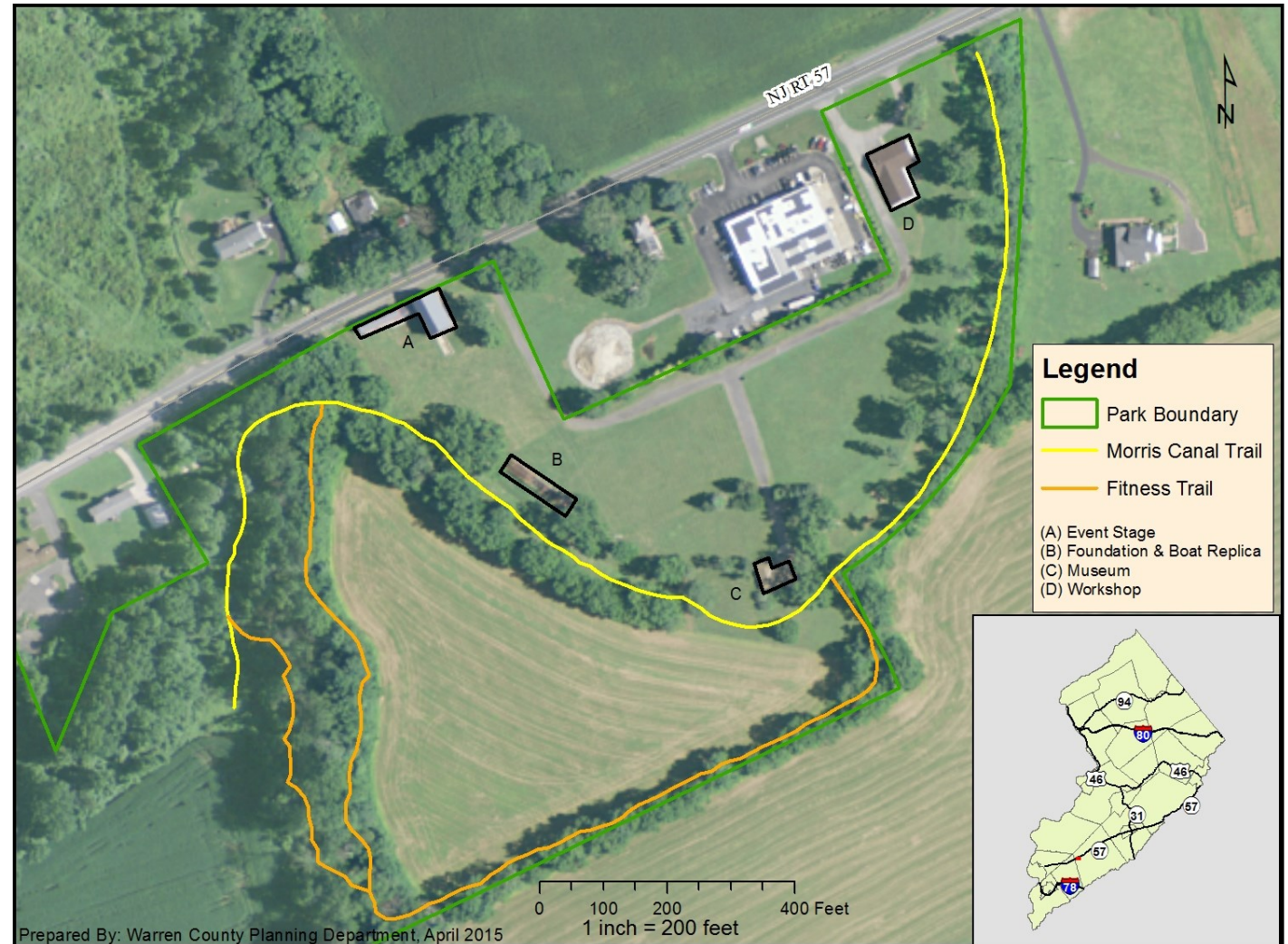
C. Museum

Open the second Sunday, monthly from 1 - 4 p.m.



D. Workshop

(Highlands Project, Inc.)



The Board of Recreation Commissioners would like to thank you for visiting Bread Lock Park and Museum located here in scenic Warren County! Nestled in the quiet hills of the Highlands Region, this preserve offers residents a chance to connect with nature and enjoy the outdoors. Whether you are hiking along the Morris Canal Towpath or biking the various other trails throughout this area, be sure to stop, breathe the fresh air, and take it all in. There is a lot to enjoy here.

In fact, there is much to enjoy throughout Warren County, so please be sure to visit the many other natural and historic sites. By doing so, we hope you will walk away with a deeper appreciation for the people and places which make Warren County so special.