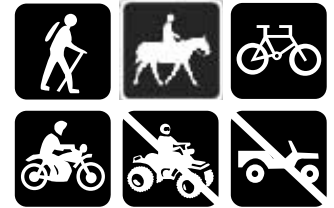




Flathead National Forest

Swan Lake Ranger District
Bigfork, Montana
406-837-7500



Strawberry Lake Trail #5

Distance: From the trailhead it is 2.8 miles to Strawberry Lake and the junction with Alpine Trail #7.

Difficulty: Moderate

USGS Quad: Jewel Basin

Beginning Elevation: 4,137 ft

Ending Elevation: 5,611 ft

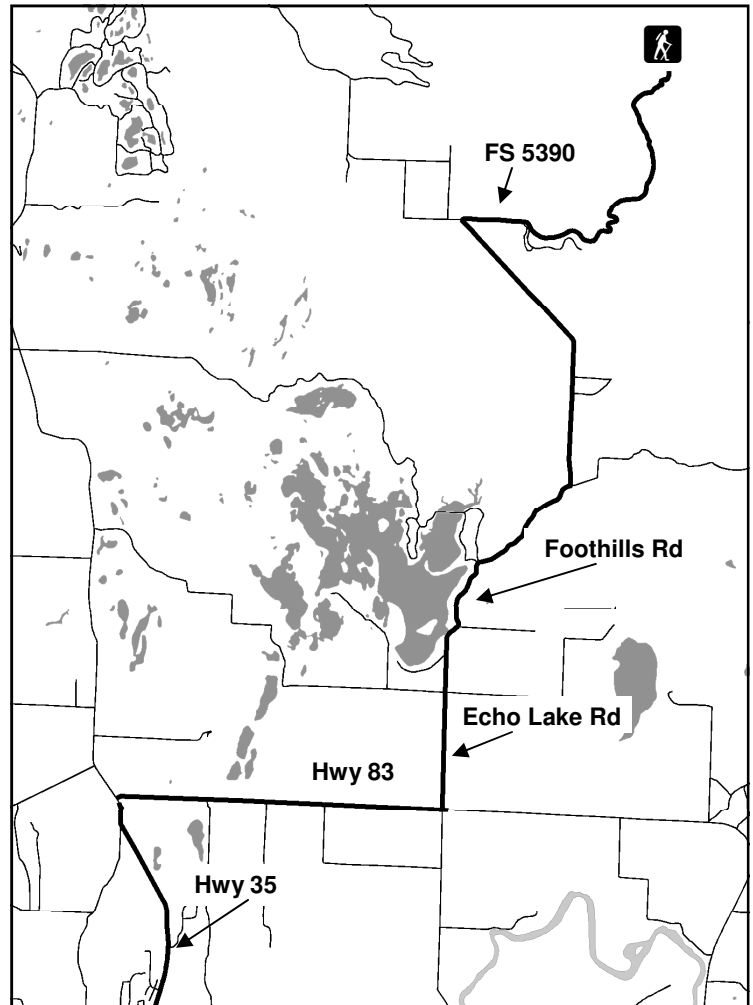
Directions: From Bigfork, go North on Highway 35 for 2.3 miles and turn right onto Highway 83. Stay on 83 for 2.8 miles and turn left onto Echo Lake Rd. After 2.2 miles, turn slightly right onto Foothill Rd. bear left after 1.1 miles to stay on the Foothill Rd. Drive for 2.7 miles, then turn right onto Road 5390 and drive for 3.3 miles, the trailhead is located at the end of this road.

Season: This trail is normally free of snow by late May.

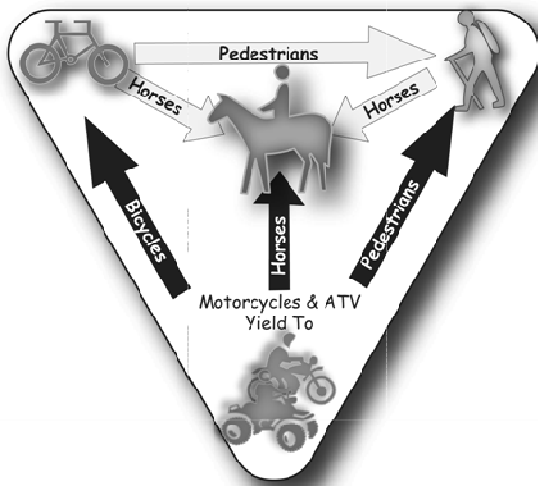
Regulations: Hiking, horse riding, mountain biking, and motorcycles are allowed on this trail. Other motorized use, including ATV's, are prohibited.

Trail Description:

The Strawberry Lake trail is 2.8 miles long and climbs 1,500 feet. It begins at the end of Forest Service Road #5390 and ends at the junction with Alpine Trail #7. This trail switchbacks up a wooded ridge and then flattens out and sidehills for the last 1.5 miles to the alpine lake.



Note: Many roads are not displayed.



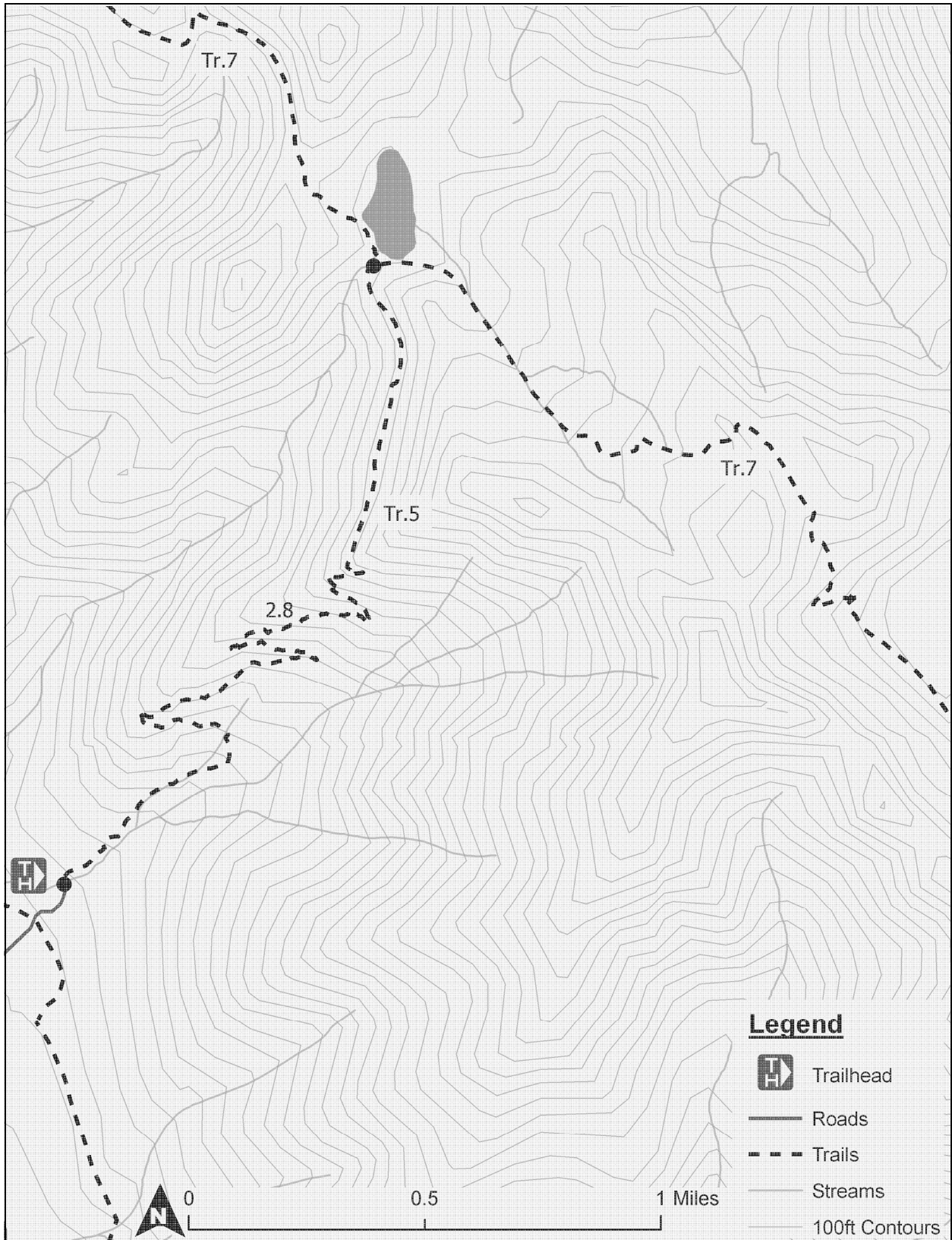
PACK IT IN — PACK IT OUT

LEAVE NO TRACE

PLAN AHEAD AND PREPARE

TRAVEL & CAMP ON DURABLE SURFACES

MINIMIZE CAMPFIRE USE



Disclaimer: The Forest Service reserves the right to correct, modify, or replace GIS products without notification. This information is not accurate for legal boundaries or for navigation purposes; it may not meet National Map Accuracy Standards. The Forest Service assumes no responsibility for the interpretation or application of this data by others.

RESPECT OTHERS

RESPECT WILDLIFE

LEAVE WHAT YOU FIND

DISPOSE OF WASTE PROPERLY