

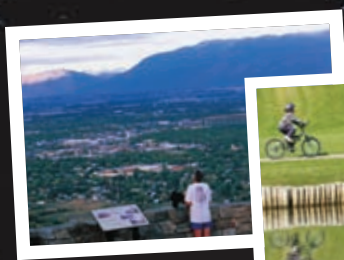
THE OFFICIAL VISITOR GUIDE

KALISPELL

M O N T A N A



2011-2012 VACATION & COMMUNITY GUIDE



Your home's in the mountains; Your business in the clouds!



YOU COME TO MONTANA TO UNTIE YOUR BOUNDS AND SIMPLIFY YOUR LIFE.

WE ARE THE REGION'S ONLY IT COMMUNICATIONS PROVIDER OFFERING FULL IP BROADBAND WIRELINE, CUSTOM WIFI, WIMAX, SECURE MULTI-ENTRY, INSTANT MIRROR BACK UP CLOUD, VIRTUAL SERVERS, AND APPLICATION HOSTING.

SECURE OR WIDE-OPEN SYSTEMS DESIGNED TO SERVE YOUR LOCAL AND REMOTE EMPLOYEES, CUSTOMERS AND GUESTS WITH HIGH SPEED DATA... WITH LOCAL, DOWN HOME, PERSONAL SERVICE.

DOWNLOAD OUR 22MB BROCHURE

WWW.MONTANASKY.NET/SERVICES.PDF

MONTANAsky.NET

CLOUD DATA CENTER • TV • PHONE • HIGH SPEED BROADBAND
1286 Burns Way Kalispell MT 59901

Where the LOCALs Connect!
(406) 752-4335

KALISPELL

M O N T A N A

LIVING THE GOOD LIFE

In 1891, businessman Charles E. Conrad built a bank and founded a town at the site of the new Great Northern Railway division point – Kalispell.

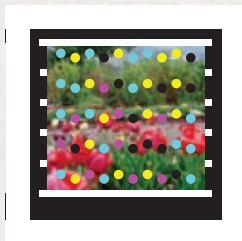
Kalispell remains intrinsically connected to its rich history and cultural heritage. For 120 years its temperate climate, unparalleled natural beauty, friendly people and casual lifestyle have provided a quality of living unmatched anywhere.

Living in Kalispell is living the good life. Whether you have a passion for outdoor recreating on a freshly powdered winter's morning, sneaking away on a sun-drenched summer's afternoon, or wrapping a blanket of stars around you and curling up in our corner of the country, we invite you to kick back and savor our seasons.

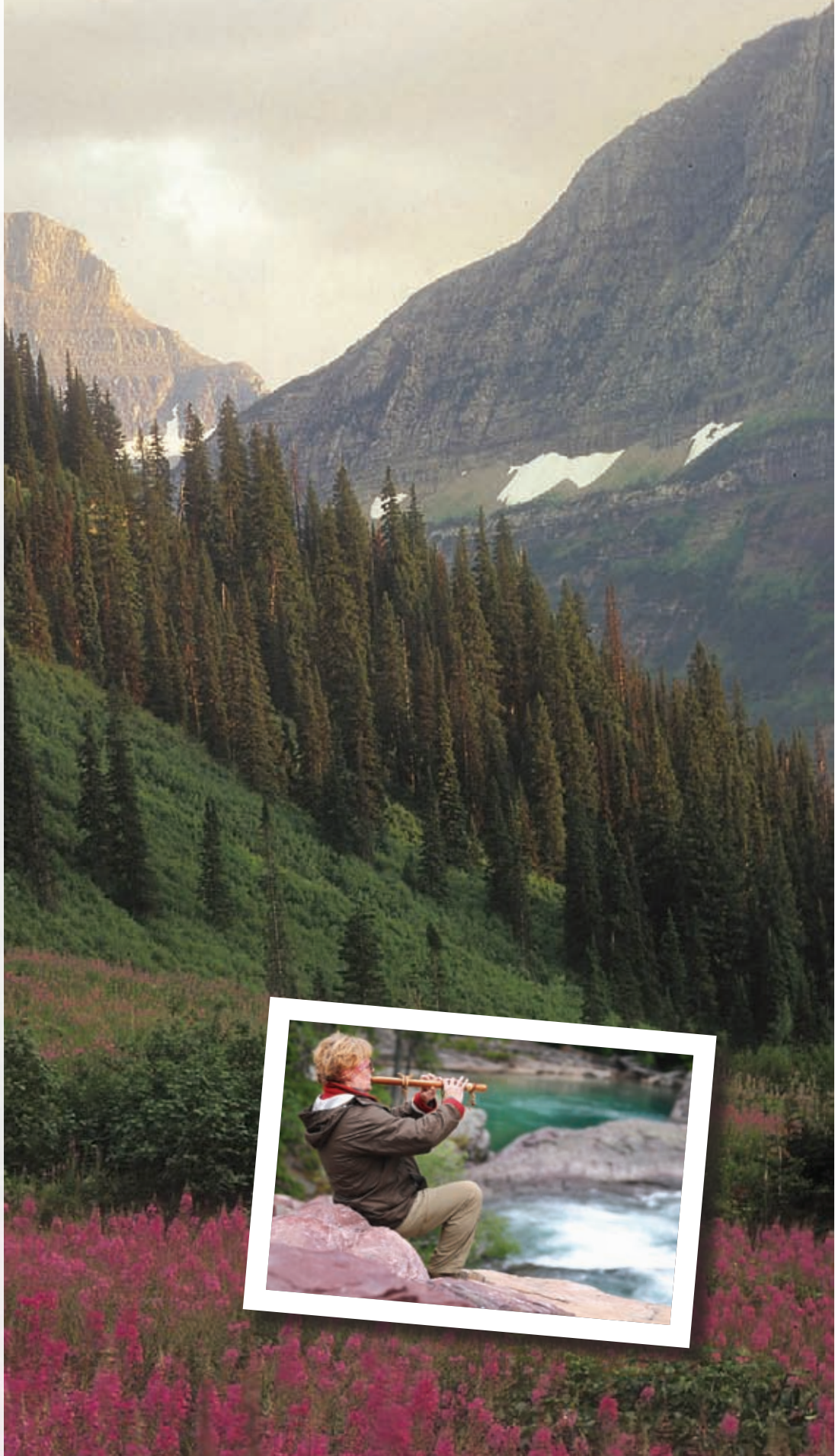
Living here all comes down to quality of life. With Glacier National Park, Flathead Lake and the Bob Marshall Wilderness rubbing shoulders with Northwest Montana, Kalispell and the surrounding valley's unsurpassed beauty, affordable living and healthy lifestyle make it one of the most desirable areas in the country.

Welcome home to Kalispell. You're going to love our lifestyle.

Scan with your smart phone to discover Kalispell!



Get the free mobile app for your phone at <http://gettag.mobi>



Karen Nichols | Daily Inter Lake

DISCOVERY IN EVERY DIRECTION

WELCOME TO KALISPELL

Kalispell is a dynamic, enterprising community in the heart of Montana's magnificent Rocky Mountains. With a rich history and the best backyard in the country, it is the very essence of Big Sky Country

Situated in the northwest corner of the state, Kalispell is centrally located in the Flathead Valley where people can experience the thrill of Montana's most spectacular natural wonders. The city of Kalispell is about an hour's drive from the Canadian border and a half-hour from the rugged grandeur of Glacier National Park. Fifteen minutes to the south is Flathead Lake — a glacial jewel — the largest natural freshwater lake west of the Mississippi. Encompassing the valley is the Flathead National Forest — 2.3 million acres of federally protected and public land — home to abundant wildlife, including grizzly black bears, moose, deer, elk, mountain goats, bighorn sheep and wolves.

Kalispell offers real Montana hospitality within a community rich in local color and events, and the right balance of outdoor adventure and amenities with its museums, shopping and dining all located amid Montana's most iconic natural places.

*"A blend of the Old West with a lively art scene, beautiful scenery, a bounty of summer and winter sports and the spectacular scenery of Glacier National park make Kalispell appealing. A place where all seasons can be enjoyed."
— Where to Retire magazine*

People travel to Kalispell to experience Glacier National Park, learn about its history and that of the Flathead Valley, to shop, seek medical care, pursue higher education and conduct business. Here you can discover the unexpected — a rare painting at the Hockaday Museum of Art, an evening concert under the stars, a roadside attraction on the way to Glacier Park, or a stand selling fresh cherries on a drive around Flathead Lake.

The area's economy is diverse, entrepreneur-oriented and reflects the regions' growth. At more than 5,000 square miles Flathead County's 90,000 residents have plenty of elbow room. More than 80 percent of the county's three million acres is protected by national parks, federal and state forests and private timber reserves.

Kalispell and the Flathead Valley are devoted to the arts. The area attracts and supports more than 2,000 artists and craftspeople whose work can be seen in studios, galleries and festivals. Theater, dance and live music enjoy enthusiastic audiences. From outdoor symphonies and concerts to intimate venues and clubs, the variety of entertainment choices is endless.

Two downhill ski areas are within an easy half-hour drive of Kalispell: Whitefish Mountain Resort to the north near Whitefish, and Blacktail Mountain Ski Area to the south near Lakeside. Nine championship golf courses are scattered within 45 minutes of one another.

From fishing, boating and bicycling, to hiking, hunting and huckleberry picking — whatever your heart desires is within easy reach in Kalispell.

Kalispell's infinite vistas with 360-degree views of Glacier Park and the Whitefish, Swan and Mission ranges of the Rockies, its diverse economy and growing community of friendly residents who take great pride in their home, are a few of the many reasons why the quality of life here is extraordinary — and why the Flathead's unparalleled beauty is treasured by all who live here.

GETTING HERE

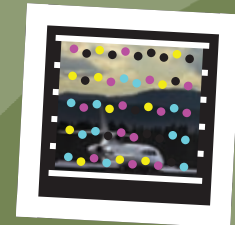
PLANES, TRAINS AND AUTOMOBILES

Glacier Park International Airport offers direct flights to seven major national hubs including Seattle, Las Vegas, Salt Lake City, Denver, Minneapolis/St. Paul, Chicago and Atlanta.

Served by Delta/SkyWest, United, Alaska Airlines/Horizon Air, Allegiant

>> www.lflyglacier.com

Scan your smart phone below:



Get the free mobile app
for your phone at
<http://gettag.mobi>

Amtrak's Chicago to Seattle Empire Builder trans-American train makes stops twice daily in nearby Whitefish, the state's busiest station.

>> www.amtrak.com

Interstate 90 passes through the city of Missoula 115 miles south of Kalispell. From Missoula, U.S. 93 heads north to Kalispell paralleling the impressive Mission Mountain Range and beautiful west shore of Flathead Lake.

U.S. 2, known as the Hi-Line, is the main east-west route across Montana's northern tier and passes through downtown Kalispell.

Welcome Home



www.silverbrookestates.com

Silverbrook Estates is a community without sacrifice. We are Montana's best new home value providing a wide variety of residential opportunities with a diverse selection of homes from the low 200's.

US Highway 93 North
Between Whitefish and Kalispell
406-257-2400

Kari Friedman | Daily Inter Lake

HISTORY OF KALISPELL

The townsite of Kalispell, Montana, was founded in 1891 by railroad builder James J. Hill and businessman and banker Charles E. Conrad as the Great Northern Railway's division point on its route from St. Paul to Seattle.

By the time the railroad had relocated its main line north to Whitefish three years later, Kalispell had already become established as Flathead County's trade and financial center and been selected as the seat of Flathead County. Known for its fertile farmland, Kalispell was also the heart of the area's lumber industry for many years.

The opening of the Flathead Indian Reservation and homesteader registration, along with the creation of Glacier National Park in 1910 also contributed to Kalispell's early success and growth.

Many who settled in the beautiful Flathead Valley had come from the Midwest and were of Scandinavian, Norwegian and German origin. Early Kalispell had a considerable Chinese community as well, as is evidenced today by the grave-stones in Demersville Cemetery on Kalispell's south side, near the location of Demersville, an early settlement on the Flathead River that became a ghost town when the railroad established its division point four miles farther north.

In his early years as a Missouri River trader Charles Conrad had shipped hundreds of thousands of buffalo hides from the West to St. Louis. After bearing witness to the decimation of the Great Plains buffalo, one of his first projects upon moving to the Flathead Valley was to create a buffalo preserve. The Conrad buffalo herd once grazed on what is now Kalispell's Buffalo Hill Golf Course, and later became the origin of the National Bison Range 80 miles south of Kalispell.



Scan with your smart phone to discover Kalispell!



Get the free mobile app for your phone at <http://gettag.mobi>

FLATHEAD WEATHER

Average Precipitation – 15.3 inches (1948-2006)

Annual snowfall – 53.5 inches

Growing season – 96 days

Sunny weather – 70 days

Partly cloudy weather – 81 days

Cloudy weather – 214 with 4/5ths days and more of the sky covered

Fog – 33 days with visibility of 1/4 mile or less

Average Temperatures (Min | Max)

January 14 | 29

April 32 | 55

July 50 | 82

October 33 | 56

RECORDS

Driest Year – 10.42 inches in 1944

Wettest Year – 25.23 inches in 1996

Most Snowfall – 148.8 inches in 1996

Record High – 105, Aug. 4, 1961

Record Low – minus 38, Jan. 30-31, 1950

Sources: www.wrh.noaa.gov/mso/climfacts.php; www.wrcc.dri.edu/climsum.html; Flathead County Extension Office



Daily Inter Lake File Photo

CROWN OF THE CONTINENT

GLACIER NATIONAL PARK

From downtown Kalispell, you can see the majestic, snowcapped peaks of magnificent Glacier National Park, with its awe-inspiring glaciers, expansive valleys, cascading waterfalls, diverse wildlife — a million acres of pristine wilderness, studded with 762 lakes, 563 streams or rivers and 175 named mountains — six of which rise to over 10,000 feet.

Coined the Crown of the Continent by early explorer George Byrd Grinnell a century ago, Glacier Park is just a half-hour drive from Kalispell but when you hike a mile down one of its trails, you'll feel a million miles from day-to-day demands.

Glacier National Park was established in 1910, the country's 10th national park. Last year, the park's year-long Centennial celebration drew record crowds as people from around the country, and indeed the world, came to connect with Glacier's historic and cultural legacy.

In 1932 Glacier and Waterton Lakes National Park in Canada were designated Waterton-Glacier International Peace Park as a symbol of the long-standing peace and friendship between our two nations.

Glacier's cultural history dates back at least 10,000 years to the ancestors of the same American Indian tribes that live in the area today — the Blackfeet who controlled the vast prairies east of the mountains, and the Salish and Kootenai who lived and hunted in the western valleys.

At the height of summer, Rocky Mountain wildflowers bloom abundantly along Glacier's 730 miles of trails from the popular Northern Highline Trail, one of America's premier hiking trails, to more remote destinations for hardy trailblazers like Iceberg Lake and Pitamakan Pass.

Those who visit have the unique chance of spotting some of America's most diverse flora and fauna, including elk, mountain goats, lynx, wolves, and one of the largest remaining grizzly bear populations anywhere in the lower 48 states.

Glacier has always been a hiker's park, but driving through it also provides staggering vistas.

TOP 5 DAY HIKES IN GLACIER NATIONAL PARK

1. Trail of the Cedars — .7 mile level boardwalk trail through an old-growth cedar and hemlock forest. Wheelchair accessible. Trailhead across from Avalanche Campground near McDonald Lodge.

2. Avalanche Lake — Because it's one of the most popular hike in the park, it's like a party on this trail leading to a turquoise lake fed by numerous 200-foot waterfalls. Trailhead near Avalanche Gorge on Trail of the Cedars — 4.7 miles, 500 foot elevation gain.

3. Hidden Lake — Another very popular hike starting at Logan Pass Visitor Center on boardwalks through alpine tundra with stunning, panoramic views; 3 miles, 550 foot elevation gain.

4. Highline Trail — Absolutely phenomenal views of Glacier Park from this top-of-the-world trail starting at Logan Pass; 11.6 miles to Going to the Sun Loop where you can pick up the free shuttle back to your car at Logan Pass (Or head out and back according to the amount of time you have.) Bucket list this one.

5. Upper Two Medicine Lake — 4.4 miles with the boat shuttle or 10 miles on foot, passing by Twin Falls on the way to the lake sequestered amid towering red peaks. Trailhead at Two Medicine Lake boat dock; 300-foot elevation gain.

The famed 50-mile Going-to-the-Sun Road, carved out of the sheer mountain slopes, is a National Historic Landmark. Considered one of the most spectacular drives and one of the most epic engineering feats in the world, the road climbs 3,000 feet to the 6,646-foot high Logan Pass at the top of the Continental Divide.

Park visitors can enjoy the historic route and spectacular scenery on board one of Glacier's environmentally-friendly shuttle buses or vans. Once park entrance fees are paid the voluntary transit system is free of charge from 7 a.m. to 7 p.m. daily, July 1 through Sept. 2.

The popular shuttles are efficient and convenient, helping visitors to avoid parking problems and relieving traffic congestion during the road's expansive rehabilitation. Or enjoy a once-in-a-lifetime interpretive Red Bus Tour. These elegant, iconic busses feature roll-back canvas roofs and are as much a part of the history of Glacier Park as Going-to-the-Sun Road.

However travelers see the park, the opportunity to see wildlife is excellent— be it a moose munching in a roadside marsh, a black bear cub moseying across the road or a mountain goat perched on the mountainside at Logan Pass.

More than \$17 million in federal stimulus money was earmarked in 2009 for maintenance projects in Glacier Park, including ongoing restoration and facilities upgrades and trail and campground improvements.

Depending on weather, the entire length of Going to the Sun Road will be open to cars as soon as June 17.

From its rugged wilderness to its historic chalets and lodges, it's no wonder more than two million visitors pass through its gates annually.

Spring, fall and winter, Glacier offers a whole new dimension. As autumn burnish the larch and birch to a golden color and falling leaves sift through the trees, the folks who live here year-round come back to Glacier to savor all its

Continued on next page

EXPLORE, DISCOVER, RECOVER

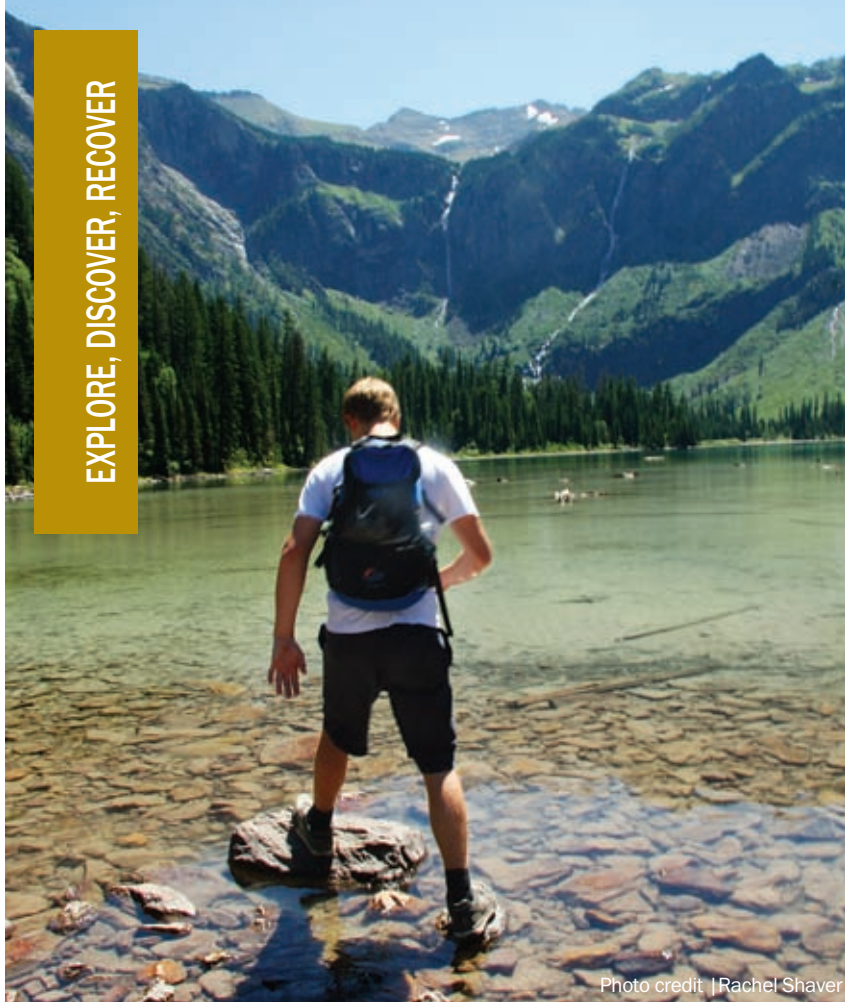


Photo credit | Rachel Shaver

GLACIER NATIONAL PARK

Continued from page 7

seasons. In winter we strap on skis or snowshoes and head up the unplowed road past Lake McDonald.

Come spring, as the plows work their way up Going-to-the-Sun Road, clearing it of snow, and also in late fall when Going-to-the-Sun is closed to motorized traffic, local hikers and bicyclists have the highway sublimely to themselves.

Educational snowshoe hikes are available in the park throughout the winter and backcountry guided adventures can be reserved year round.

Perched on what the Blackfeet called the Backbone of the World – the Continental Divide, Glacier Park is truly a national treasure that symbolizes all that is grand about life in Northwest Montana. It’s pristine. It’s naturally spectacular. Profound vistas. Enticing hiking. Heaven on earth. And it’s right at our doorstep.

Glacier National Park’s website offers e-Tours and e-Hikes. While there’s no substitute for lacing up your hiking books and heading down the trail, the online interactive eHikes and eTours will wet your appetite for Glacier’s sensational scenery and help you either plan your visit or relive your adventures.

So take an eWalk on the eWild side and log on to:

>>www.nps.gov/glac/photosmultimedia/virtualtour.htm.

>>Glacier National Park, 406-888-7800; www.nps.gov/glac

IN GLACIER COUNTRY
myspace
TAKES ON A WHOLE
NEW MEANING



Glacier Country
MONTANA



GLACIERMT.COM/DI
CALL FOR YOUR FREE TRAVEL GUIDE
800.338.5072



Brenda Ahearn | Daily Inter Lake

FREE WHEELING IN THE FLATHEAD

BICYCLING

If you want to cruise using your own pedal power, you'll love the Flathead. Both paved pedestrian trails and dirt single tracks launch bicyclists in any direction for miles.

Rails to Trails of Northwest Montana, a grassroots non-profit, has paved more than 10 miles of the Great Northern Rail Trail around Kalispell, from the town of Somers on the north shore of Flathead Lake west to Kila bordering the Smith Lake Waterfowl Production Area, much of which is built on former Great Northern Railroad beds. These connect with other bike paths around town, including the newly constructed path that parallels the southern portion of the U.S. 93 Alternate Route, completed in 2010; >>www.railstotrailsofnwmt.com.

OTHER GREAT RIDES

Lone Pine State Park — Over 6 miles of hiking/biking trails, from well-surfaced to steep single track, topped off by a terrific Visitor Center and fantastic bird's eye views of the entire valley.

>><http://fwp.mt.gov/parks/visit/lonepine>

Herron Park/Foy's to Blacktail Trails — Less than 10 minutes from Kalispell, Herron is a mountain bikers/hikers/crosscountry skiers gateway to a vast trail system through timberlands extending south toward Blacktail Mountain; >>www.foystoblacktailtrails.org

Pig Farm-Farm to Market Road area — An elaborate network of fat tire single track through woods and meadows, easy enough for casual day-trippers but able to throw down the gauntlet to weekend warriors. There aren't trail markers, so bring a healthy sense of direction — or your GPS.

Directions: From Kalispell head north on U.S. 93. Turn left (west) on West Reserve. Go four miles to Farm to Market Road and turn right (north). The area known by locals as the "Pig Farm" is about 7 miles north a little way past Farm to Market Pork. The unsigned parking area will be

on your left across from the Ray Kuhn Wildlife Reserve which is signed.

Whitefish Trail — 12 unpaved miles looping from Lion Mountain trailhead to Beaver Lake and beyond. Another 5 miles of new trail is slated to be added this year.

Directions: Access via Lion Mountain Loop Road off U.S. 93 miles 1.2 miles north of Whitefish.

>>whitefishtrails.net

Fish Trails — 12 miles of pedestrian/bike paths around the city. Access from Edgewood off Wisconsin Avenue after crossing over the BN viaduct.

Spencer Mountain — About 15 miles of established trails for bikers, hikers, and horseback riders, taking off from Spencer Lake 4 miles north of Whitefish at Twin Bridges Road.

Big Mountain Road — About 5 miles and 1,500 vertical feet of up, rewarded with 5 miles of down. A road biker's nemesis and heaven, rolled into one.

Whitefish Mountain Resort — Hang your mountain bike on the lift and sashay up "the Big" to free ride over 20 miles of cross country trails from the superbly scenic Summit Trail to the Runaway Train. Bike rentals available at Snow Ghost Outfitters in the Village; >>406-862-1996.

Going to the Sun Road, Glacier National Park — The hale and hearty head up this famed highway are awarded not only for the spectacular scenery but with kudos for conquering the 3,500-foot elevation gain from Lake McDonald to Logan Pass. Distance from the park's west entrance is 32 miles. Make sure your brakes are in optimal shape for the return trip. Or just head up the road as far as your legs carry you. The first half is fairly flat. Restrictions apply:

>>www.nps.gov/glac/planyourvisit/gttsrfaq.htm

RENT A RIDE

Kalispell —

Wheaton's,
214 First Ave. W.
406-257-5808

877-943-2829;

>> www.wheatonscycle.com

REPAIRS/SHOPS

Kalispell —

Wheaton's,
(see 'Rent a ride')

Sportsman Ski Haus,
Hutton Ranch Plaza
406-755-6484

>> sportsmanskihaus.com



Daily Inter Lake File Photo

ROOM TO ROAM

HIKING

Kalispell is surrounded by some of the most unspoiled, magnificent natural beauty found anywhere in the United States — 30 minutes to the north lies Glacier National Park, and just to the south and east are the Bob Marshall, Great Bear and Mission Mountains wilderness areas. Combined with 2.3 million acres of Flathead National Forest, the Flathead Valley possesses abundant recreational opportunities and a wealth of natural resources.

Whether you have a half hour, a half day or the whole weekend, you're within a few minutes or a short drive of a place to lace up your hiking shoes and take a walk on the wild side.

for runners and dogwalkers. There's a playground just to the north of the easternmost parking lot. Completed in 2008, Miracle Field features a special rubberized surface so those with physical or developmental challenges can compete in sports.

Lone Pine State Park's the biggest little park in Northwest Montana. Just a 6

Here in town, a 10-mile stretch of the **Great Northern Trail** beckons baby strollers, bikers and hikers. This trail links to several miles of additional trails, one segment paralleling the U.S. 93 alternate on Kalispell's south side; another linking to downtown Somers and Flathead Lake.

Woodland and Lawrence Parks — We've got green space galore right in town. Woodland Park's paved trail wanders through rose gardens, duck ponds and playgrounds. Lawrence Park's mile of paved trail circumnavigates the park's ball fields, pavilions and playground, wandering near the shady banks of the Stillwater River for a short distance.

The Kidsport Complex just off U.S. 93 on Four Mile Drive across from Flathead Community College offers a great in-town network of trails around the sports fields

miles from town are 6 miles of developed trail where hikers and mountain bikers can choose from steady and steep to easy cruises through wooded terrain. You'll find fantastic views at the top and a Visitor Center with full-service restrooms, drinking fountains and a gift shop; along with a wheelchair accessible interpretive loop; >>406-752-5501, www.fwp.mt.gov/parks/visit/loneline

Iven Herron Memorial Park's single track mountain bike and hiking paths break away into the Foy's to Blacktail Trails Project, an ambitious and extensive trail system linking to the Forest Service lands surrounding Blacktail Mountain; >>www.foystoblacktailtrails.org

Danny On Memorial Trail — Dramatic panoramas unfold along this trail that leads to the 7,000 summit of Big Mountain at Whitefish Mountain Resort. Choose from routes 3 to 6 miles in length. Ride the gondola or chairlift up and hike down to the Village, or hoof it up the mountain and reward yourself with a cold drink at the Summit House before taking a ride back down.

The Jewel Basin is only a half hour or so from downtown Kalispell but miles away from civilization. A day hiker's paradise, the Jewel's 25 lakes stud its 35 mile, well-marked trail system. Mount Aeneas, its highest point, can be tackled in a day — 8 miles round-trip; Flathead National Forest, 650 Wolfpack Way, Kalispell; >>406-758-5200; www.swanrange.org/jewel_basin_web.pdf

Swan River Nature Trail — Bigfork's 2-mile long gravel trail looks down upon the Wild Mile of the Swan River. Head into town from Montana 35 on Grand Drive and keep going straight past Electric Avenue and the Bigfork Inn. The trailhead's at the top of the short hill. >>www.bigfork.org

Historical Walking Tour of Kalispell — History buffs can pick up a brochure at the Kalispell Chamber for this self-guided tour of Kalispell's many architectural highlights.



Photo credit | Kat Gebauer

LIKE TO PLAY A ROUND? KALISPELL'S FOR SWINGERS

GOLF

It's no surprise that Golf Digest listed the Flathead among its top 50 golf destinations, and one of the 10 best golf retirement locations. And all of our nine championship courses are within a 45-minute drive.

Kalispell's municipal course, **Buffalo Hill Golf Club**, challenges even the toughest duffers with its 27-hole, 9,585-yard course. But you won't even notice you broke a sweat soaking in the panoramic views along the Stillwa-

ter River. Besides its Championship 18 and Cameron 9, the Flathead's most popular course also features a full-service pro shop and impressive log clubhouse. Consistently on Golf Digest's top courses and places to play; >>406-756-4530, 888-342-6319; www.golfbuffalohill.com

Village Greens Golf Club's 18 holes boast some of the finest bent grass greens in the valley. With its highly affordable greens fees, all grass driving

range, full-service golf shop and a 19th hole to grab a cold one, it's the perfect place to get away for a day or take in a twilight nine; >>406-752-4666.

Big Mountain Golf Club combines traditional, rolling Scottish links on the front nine with an easygoing back nine that weaves amid towering pines along the Stillwater River. No wonder Golf Digest named it one of the "Best Courses in the State" in 2007-2008;

>>406-751-1950, 800-255-5641; www.bigmountainclub.com

All together, the Flathead's world-class nine public golf courses are as much a part of our show-stopping scenery as the mountains. And we guarantee the grandeur's going to make it hard to keep your eye on the ball. Truth is, this is one of the most unspoiled and relaxing places to play golf anywhere in the country.

>>www.golffmontana.net

Glacier Park International Airport

Gateway to Glacier National Park, NW Montana & the Canadian Rockies

Non-Stop Service Year Round
 Denver, Las Vegas, Minneapolis, Salt Lake City & Seattle
 Seasonal Service: Atlanta & Chicago

ONLY
 20 MINUTES
 FROM GLACIER
 NATIONAL PARK &
 BIG MOUNTAIN SKIING



PLACES TO GO WITH THE KIDS IN TOW

Garrett Cheen | Daily Inter Lake

FAMILY FRIENDLY

All accounted for, 30 parks complement the City of Kalispell.

The city's largest and oldest, 38-acre **Woodland Park** is the perfect place for families to go play. Besides two miles of walking trails and a playground, families come to cool off in Woodland Water Park's lap pool, dare to drop down two totally awesome waterslides, or cruise on 'tubes on the lazy river float. Little tikes love the shallower activity pool's toys, sprinklers and fountains.

Kalispell's 6,000 square-foot **Woodland Skate Park** sports a spine with a 90-degree curve, ramps and steel bars where skateboarder can ride the bowls. Kids love feeding the ducks on the pond. Ice skaters converge there in the winter, taking advantage of the old-fashioned warming hut.

Woodland Ice Center is a polar playground for skaters of all abilities and home to the Flathead Valley Hockey Association. Opened in 2007, the center's fully decked out with locker rooms, stadium lights, and a Zamboni; rental skates available.

Bordering the Stillwater River, **Lawrence Park** invites walkers, picnickers, families and Frisbee golfers.

Tennis courts are scattered around town, and the city's extensive complex of courts near the community college hosts tournament play.

Kidsport Complex provides 140 acres of fields where families converge to cheer on youth soccer and baseball teams. Kalispell Rotary Club's Miracle Field features a special rubberized surface where those with physical or developmental challenges can play sports.

Foy's Lake — Where families take a cool dip on warm summer days. A boat dock, public dock for sunbathing, and park for picnicking and jet-ski watching.

The Zone Family Fun Center — Newly opened one-stop shop featuring a huge laser tag arena, bumper cars, bounce house, "Crazy Zone" and pizza parlor. What's not to love? 3240 U.S. 2 E, just north of Glacier International Airport; >>406-755-9663, www.zonefamily.com

Raceway Park — High-speed auto racing beneath the checkered flag every Saturday through mid-September. One of the top-rated short tracks in the country; U.S. 93 N, between Kalispell and Whitefish; www.montanaracewaypark.com; >>406-257-7223.

Horseback Riding — An authentic and unforgettable Western vacation awaits your family on the handsome Bar W Guest Ranch just outside of Whitefish. Horseback riding, sleigh rides, rodeo action, fishing, cookouts and more. Open year round; >>1-866-828-2900; www.thebarw.com

David Olseth Memorial Skatepark in Whitefish lays out 15,000 square feet of concrete, two deep bowls, steep walls and a street course; helmets required.

Big Sky Waterpark — Four swimsuit-yanking slides from the Bonzai to the 70-foot Geronimo rattle the nerves of even the most fearless speed demons; or bump along the River Ride, warm up in a gigantic hot tub or grab some sun by the jumbo children's activity pool.

The 18-hole miniature golf course will challenge even grandpa. Horseshoe pits, barbecue grills, an arcade and carousel add up to an all-day fun fest; >>406-892-5025, bigskywp.com

House of Mystery — Popular roadside attraction and site of Montana's only vortex where the laws of nature are turned upside down. You'll think you entered "The Twilight Zone"; 7800 U.S. 2 E., Columbia Falls, >>406-892-1210; www.montanavortex.com

Amazing Fun Center — Lose yourself in the life-size Glacier Maze! Go carts, bumper boats, miniature golf and bankshot basketball. Stop! 10265 U.S. 2 E., Coram, >>406-387-5902; www.amazingfuncenter.com

Hungry Horse Dam — The nation's 11th highest dam in the best dam town in the Northwest. Free guided tours from the Visitor Center mid-June through September; >>406-387-5241

Northern Lights Laser Tag Park — The ultimate outdoor interactive laser experience. Remote NASCAR, sailing regattas and blimp racing. They don't call it Full Throttle Entertainment for nothing! 4966 U.S. 93 S., Whitefish, >>406-862-0541; www.fullthrottleentertainment.com

Miracle of America Museum — Nicknamed "The Smithsonian of the West." Acres of historical and war memorabilia, vintage military vehicles, a Huey, jet planes, Pioneer Village, mini-train rides. Knock yourselves out; U.S. 93 at Montana 35 junction, Polson, >>406-883-6804; www.miracleofamericamuseum.org



TAKE A POWDER

Photo credit | Kat Gebauer

WINTER SPORTS

From Kalispell two downhill ski areas are less than an hour away, just enough time to down your first cup of Joe of the day.

Celebrating its 63rd anniversary this year, **Whitefish Mountain Resort**, formerly known as Big Mountain, is a world class resort offering five-star lodging and fine dining, 10 lifts and unsurpassed views of Glacier Park and the Flathead Valley. With more than

If your spirits rise when snowflakes fall, you're going to love our winters. Northwest Montana is a powderhound's paradise whether you're into downhill thrills or a cross-country glide.

If you like to ride park you'll be stoked jibbing and jamming in the Fishbowl Terrain Parks. And did we mention the night skiing? — it's all just 23 miles north of Kalispell.

South of Kalispell is **Blacktail Mountain**, Montana's newest ski area. It's affordable and family friendly with a cozy lodge for fire-side lunch breaks and a full bar and grill on the upper level for your après ski. Its north-facing slopes, high above Flathead Lake, offer consistent snow through mid-April. Boarders can rip it up on Independence Terrain Park's fun boxes, table tops and rails.

Cross-country skiers can choose from miles of groomed trails around the Flathead Valley. Jump onto eight kilometers of groomed skate and Nordic trails

right in town **behind Flathead Valley Community College** — the perfect mid-day escape — or head for nearby **Herron Park, Whitefish Lake Golf Course, Round Meadows, Bigfork Nordic Center** or the **Blacktail Nordic** ski trails.

And where there are no trails, adventurous skiers and snowshoers blaze their own across thousands of acres of public land.

Northwest Montana boasts more than 200 miles of groomed snowmobile trails. Another 2,000 miles of Forest Service roads lead to spectacular ridgetop views. Free winter use maps are available at all Flathead National Forest offices.

Here in Kalispell, **Woodland Park Ice Center** skaters can practice their figure 8s and hockey players can push a puck on either the pond or at the Ice Center all winter long. Sledding hills give brave souls, young and old, thrills and chills. Try **Dry Bridge Park** on Woodland Drive or Herron Park just south of town off **Foy's Lake Road** for obstacle-free descents.

Or tuck your family into a soft, warm sled and glide through the Montana backcountry guided by a team of Alaskan sled dogs. A truly unique experience! >>406-881-BARK (2275); www.dogsledadventuresmontana.com

Downhill

>>blacktailmountain.com
>>skiwhitefish.com

Cross-country

>>glaciernordicclub.com
>>northshorenordic.org

Snowmobiling

>>flatheadsnowmobiler.com
>>www.fs.fed.us/r1/flathead

Rentals

Winter Wonderland Sports,
>>406-257-2627; www.winterwonderlandsports.com

KALISPELL CULTURE

WHERE THE SPIRIT OF GLACIER PARK MEETS HISTORIC KALISPELL.



EXHIBITIONS
THAT ILLUMINATE
LOCAL HISTORY

124 Second Avenue East
406.756.8381
Monday - Friday
10am - 5pm
www.yourmuseum.org



HOCKADAY MUSEUM of ART

ARTISTIC GATEWAY
TO
GLACIER NATIONAL PARK

302 Second Avenue East
406.755.5268
Tuesday - Saturday
10am - 5pm
www.hockadaymuseum.org



EXPLORE
HISTORIC
ELEGANCE

330 Woodland Avenue
406.755.2166
Tuesday - Sunday
10am - 5pm
www.conradmansion.com



THE SPORTING LIFE

Brenda Ahearn/Daily Inter Lake

FISHING AND HUNTING

More than 2.3 million acres of the Flathead National Forest dominate the Kalispell region making Northwest Montana a sportsman's paradise.

Fishing

If you're hankering to do some angling the area's streams, rivers and lakes teem with 25 species of fish, including natives like bull trout and westslope cutthroat trout. Wherever you head, bring your fishing pole or fly rod 'cause the fish are biting!

At first sight, the sapphire blue expanse of **Flathead Lake** is spellbinding. Unquestionably the crown jewel in the Crown of the Continent ecosystem, its pristine waters offer unlimited recreational opportunities. Two rivers, the Flathead and Swan, supply fresh water to the lake year-round, making Flathead Lake among the cleanest anywhere on earth.

At 27 miles long and 15 miles wide, Flathead Lake covers nearly 200 square miles. With a maximum depth of more than 370 feet it's the largest natural freshwater lake in the Western United States, carved 12,000 years ago by the glaciers of the last Ice Age.

The lake is famous for fishing — Experienced anglers troll for trophy Mackinaw trout. Novice fishermen find it easy to hook lake whitefish and yellow perch. Six units of Flathead Lake State Park also provide plenty of access to the lake.

The southern half of the lake lies within the Flathead Indian Reservation, home of the Confederated Salish and Kootenai tribes. A joint state/tribal fishing license is needed.

Other lakes near Kalispell great for dropping a line are Whitefish to the north, McGregor and Thompson Chain of Lakes to the west, Echo to the east, and Swan to the south.

Kokanee salmon favor Ashley, Middle Thompson, Tally, Swan and Bitterroot lakes; northern pike can be caught in Echo and Swan lakes. Nearby Smith Lake is also popular for perch and pike fishers.

The 35-mile long, 500 foot deep Hungry Horse Reservoir is open year-round for cutthroat and Whitefish angling and trolling, though weather dictates the season from May to November.

The **Flathead River** system offers miles of blue ribbon fishing for whitefish, cutthroat and rainbows. Fly fisherman cast caddis dries all season long and stoneflies in spring and summer. Nymphs and streamers are also preferred.

A favorite spot on the river close to town is known as the Old Steel Bridge for the old bridge that once spanned the river there. From U.S. 2 East at Milepost 123 in Kalispell, turn south on Shady Lane and east on Conrad Drive.

The swift-moving **Swan River** near Bigfork above Swan Lake has long been rec-

ognized as an excellent trout fishery. The fish tend to be a little smaller. Fishing the brushy banks or wading the current and avoiding the logjams is challenging, but the fish aren't picky eaters.

Most rivers open the third Saturday in May and close the end of November.

Wherever you go, our rivers, streams and lakes are places to put aside your worries and live for the moment while the wind and water work their mojo.

Start with Montana Fish, Wildlife and Parks "Montana Fishing Guide" to find out where the fish are and how to catch them. The website also has links to Montana fishing and boating regulations; 490 N. Meridian Road, Kalispell, MT 59901; >>406-752-5501.

>><http://fwp.mt.gov/fishing>; www.flatheadlakers.org

Fishing information for Glacier National Park: >>406-888-7800

Fishing information for Flathead Indian Reservation: >>406-675-2700

Hunting

In Northwest Montana hunting is one of our great sport traditions. Federal and state lands provide habitat for diverse game species - Deer, elk, moose, mountain goats, bighorns, black bear, mountain lions and game birds, to name a few. Montanans hold their hunting rights near and dear, while supporting ecologically-sound game management practices.

The **Great Bear, Bob Marshall** and **Scapegoat** wilderness areas are just east and south of Kalispell — a combined 1,285,000 acres of pure, unspoiled wilderness offering world-class hunting accessible only on foot or with livestock.

The **Mission Mountain Wilderness** offers an additional 74,000 acres of wilderness crossing onto the Flathead Indian Reservation.

Elk range across millions of acres in Montana. Here in Northwest Montana elk herds are found in the Mission and Cabinet mountains, and Swan and Whitefish ranges.

If you want to know what a hunter's high is, ask any archer who's bugled in a beautiful bull elk on a crisp September day. Or ask one who's drawn a bead on a monster moose in a foggy bog.

From hunting big bucks, black bear and fleet-of-feet antelope to bird dogging for upland game birds and waterfowl, Montana's wilderness offers endless chances for fair chase.

Hunting on private land

Be sure you're familiar with public and private boundaries. Written permission is required from land owners to hunt on private land.

Hunting licenses are required in the state of Montana and can be obtained through Fish, Wildlife and Parks or at designated licensing agents such as sporting goods stores and gas stations.

>><http://fwp.mt.gov/hunting>

BOAT/PERSONAL WATERCRAFT SALES/ RENTALS/TOURS

Wild Wave

Bigfork and Lakeside: 406-253-5800 or 406-257-2627; www.wildwaverentals.com

Jesco Boat Center

Kalispell: 406-752-2112; www.jescoboating-center.com

WHITEWATER RAFTING — WEST GLACIER

Glacier Outdoor Center/Glacier Raft Co.

800-235-6781; 406-888-5454; www.glacier-raftco.com

Great Northern Whitewater Raft & Resort

800-735-7897; 406-387-5340; www.glacierparkraft.com

Glacier Guides/Montana Raft Co.

800-521-RAFT (7238); 406-387-5555; www.glacierguides.com

Wild River Adventures

800-700-7056; 406-387-9453; www.river-wild.com

BOAT TOURS AND CHARTERS

Far West Tours

Lakeside — Cruise Flathead Lake onboard this historic, fully restored boat. Daily tours; 406-844-BOAT (2528) www.flatheadlake-boattour.com

A Able Fishing Charters

Lakeside — Full or half-day and twilight excursions; 406-844-0888; www.aablefishing.com

Mo Fisch Fishing Charters

Lakeside — Full or half-day trips on Flathead Lake and Lake Kooocanusa, Libby. Kids under 12 fish free. 406-755-4414; www.mofisch.com

Flathead Lake Charters

Woods Bay — Half, full and twilight tours; 406-837-3632; www.flatheadlakecharters.com

Bagley Guide Service

Bigfork — Proven catch record for the beginner or expert angler; 406-837-3618; <http://bagleyguideservice.com>

Glacier Park Boat Company

Glacier Park — Experience the majesty of the park's glacial lakes onboard these historic boats; 406-257-2426; www.glacierpark-boats.com



EXPLORE, DISCOVER, RECOVER

Daily Inter Lake File Photo

GO WET. GO WILD. SOAK UP SOME SMILES.

WATER SPORTS

Summertime in the Flathead is all about fun on the water. Whether you lean towards a peaceful paddle along the shoreline of one of our lakes or downstream on one of our rivers, or prefer wave running or motor boating across a wide expanse of blue, blue water, there are infinite places to jump in.

Everything from sailboats to power boats ply the waters of **Flathead Lake**. Multiple access points along both shores of the 27 mile-long, 15 mile-wide lake offer places to put in your watercraft.

Starting in June, sailboats bedeck the north and west shores of the lake heading out from Somers Bay and Dayton Yacht Harbor farther south. The North Flathead Yacht Club in Somers hosts races and regattas throughout the summer. The lake's many coves and bays provide kayakers with miles of calm water to dip their paddles. A favorite excursion is from Dayton Harbor to Wild Horse Island for lunch and a hike around the native Palouse prairie grasslands to spot the island's herd of Rocky Mountain bighorn sheep and the wild horses that reside there.

Flathead Lake's Marine Trail is a conceptual water route with nine campsites for wind or people-powered watercrafts that can be navigated by both novice and expert. Pick up a map at Fish, Wildlife and Parks office, 490 N. Meridian Road in Kalispell, or call at >>406-752-5501.

Another popular spot for paddlers is the **Flathead River** above Flathead Lake at, or below the Blankenship Bridge, where there can be some small rapids, depending on the season, and as far south as Sportsman's Bridge where the river enters Flathead Lake. The best section is between Tea Kettle fishing access site in Columbia Falls to the Old Steel Bridge access point in Kalispell — about 15 miles and a four-hour float with plenty of islands to pull over and picnic.

Like the idea of a lazy float on a hot summer's day? Locals grab their tubes and canoes and float down the **Stillwater River** from Whitefish toward Kalispell. The **Swan River** above Swan Lake in Bigfork can be a challenging float due to logjams and brushy banks, but experienced navigators will find it rewarding.

Whitewater rafting

Looking for a little more excitement? How about launching out in a whitewater raft along the wild and scenic Middle and North Forks of the Flathead River starting at Glacier National Park? From family-friendly day or overnight trips to thrill-seeking week-long hiking and rafting excursions, you'll experience Montana at its most breathtakingly beautiful and wish the trip would never end.

Park and Reservation fishing information

Glacier Park, >>406-888-7800; www.nps.gov/glac/planyourvisit/fishing.htm
Flathead Indian Reservation Fish and Game, >>406-883-2888.

FLATHEAD LAKE ACCESS POINTS

North and West Shores

Sportsman Bridge
Somers
Lakeside
West Shore State Park
Elmo
Big Arm State Park

Dayton
Polson
East Shore
Wayfarers State Park
Woods Bay
Yellow Bay
Finley Point

WELLS
FARGO

Welcome to fast, easy and convenient

Wells Fargo Kalispell

215 2nd Avenue East • 406-751-5009

2350 Highway 93 North • 406-756-4025

Together we'll go far



© 2011 Wells Fargo Bank, N.A. All rights reserved. Member FDIC.



Brenda Ahearn | Daily Inter Lake

FIND YOUR FLAIR FOR THE ARTS

ARTS AND ENTERTAINMENT

From live music and museums to art galleries and festivals, the Flathead Valley's cultural vibe is diverse and dynamic.

Glacier Symphony and Chorale

Kalispell's prestigious Glacier Symphony and Chorale strikes a definitive chord with enthusiastic audiences. Under the direction of John Zoltek each year the symphony delivers an ambitious concert series drawing world class and emerging guest artists.

The 75-voice Glacier Chorale directed by James Stanard adds its own rich repertoire of performances throughout the concert season.

But summer calls for a symphonic magic all its own. Glacier Symphony heads outdoors for one enchanting evening – the annual Summer Classical Pops concert. Pack your picnic basket and settle on the lawn at beautiful Rebecca Farm equestrian center for a spellbound evening dipped in a star-studded Montana sunset. – Saturday, July 9; gates open 5:30 p.m., concert begins 7:30 p.m. Festival Amadeus celebrates seven nights of orchestra and chamber concerts replete with internationally acclaimed guest artists, July 1 through Aug. 6. A music lover's destination vacation.

>>406-257-3241; www.gscmusic.org.

Hockaday Museum of Art – The artistic legacy of Montana and Glacier National Park come to life at the Hockaday. Originally Kalispell's Carnegie Library funded by philanthropist Andrew Carnegie, this handsome turn-of-the-century building is now home to a permanent collection of Montana artists, rotating exhibits of nationally renowned and emerging artists, and adult and children's classes. The Off the Wall Gallery offers unique, Montana-inspired gifts.

302 Second Ave. E.; >>406-755-5268; www.hockadaymuseum.org

The Hockaday also hosts Northwest Montana's largest and longest-running art fair, Arts in the Park, now in its 43rd year. This three-day juried art show at Kalispell's Depot Park draws over 100 artists, along with wonderful food and live entertainment; July 22 through 24.

Museum at Central School

Built in 1894 as Kalispell's first school, today this fully restored four-story brick and stone landmark tells the story of early Kalispell from its founding in the 1887 d. Authentic Indian artifacts, original paintings and photography, a full-size teepee and lodge. The authentic 1900s-era sawmill and tools portray the history of the logging industry.

124 Second Ave. E.; >>406-756-8381; www.yourmuseum.org.

Conrad Mansion

On the National Register of Historic Places, the Conrad Mansion is one of the most outstanding examples of Victoria-era elegance and period architecture in the Pacific Northwest. The 26 room, 13,000 square foot Norman-style mansion was built by Kalispell's founder, businessman and banker Charles E. Conrad.

The mansion's eight sandstone fireplaces, Italian onyx drinking fountains, leaded, bottle and Tiffany-style stained glass windows, bedrooms with imported marble lavatories, sleigh beds and canopied four-posters, appear today as they did when the Conrad family resided and entertained there.

The Great Hall's massive native stone fireplace and golden oak staircase, the setting for the Conrads' legendary two-story Christmas tree ablaze with hundreds of beeswax candles, is recreated every October during "Christmas at the Mansion," a three-day Victorian holiday bazaar.

Corner of Conrad Drive and Fourth Street East; >>406-755-2166;

www.conradmansion.com

LIVE MUSIC AND THEATER is natural to the fiber of the Flathead Valley. Season after season, Kalispell welcomes top quality entertainment to its nightclubs, ballrooms and auditoriums.

For 16 years, the Glacier Jazz Stampede has rolled into town every October, wowing jazz fans with great performers from national festival circuits (Oct. 6-9).

All summer long a variety of musicians play the outdoor stage on Tuesday evenings and Wednesday afternoons at Kalispell's Depot Park for the popular Picnic in the Park. Take a break from your day, relax and enjoy free live entertainment by the Northwest's most talented musicians.

Bigfork's Riverbend Park, and Columbia Falls' Marantette Park also feature summer concert series in their communities.

Kalispell's street party, Thursday!Fest, rocks the downtown every Thursday on Third Street during the summer. And things don't slow down in the winter.

Kalispell's Winter!Fest concert series draws national talent for an evening of live music in downtown's historic KM Theatre.

Around the town

In nearby Whitefish, the 300-seat O'SHAUGHNESSY CULTURAL ARTS CENTER is

Continued on next page

TAKE FIVE

OUR BREWERIES/DISTILLERIES/WINERIES WILL KEEP YOU "HOPPY."

Great Northern Brewing Company — Whitefish. Famous for its double-hopped Black Star Golden Lager and Wild Huckleberry Wheat. Sandwich menu; 406-863-1000; www.greatnorthernbrewing.com

Tamarack Brewing Company — Lakeside. Handcrafted ales and hearty pub fare, creek-side patio, live music; 406-844-0244; www.tamarackbrewing.com

Flathead Lake Brewing Company — Bigfork. Wake up with the Rising Sun Espresso Porter. Tap room, casual food fare; 406-873-0353; www.flatheadlakewinery.com

Glacier Brewing Company — Polson. Quality ambers, ales, pilsners and stouts, along with homemade sodas. Try the Flathead Cherry Ale. 406-883-2595; www.glacierbrewing.com

Glacier Distilling — Coram. Bourbon, rye and white whiskey, and Glacier Dew light whiskey inspired, by early homesteader and

moonshiner Josephine Doody. Tasting room; www.glacierdistilling.com

Flathead Distillers — Eureka. Artisan quality Flathead Vodka, Flathead Coffee Infused Vodka, made from Montana sugar beets. Available at local liquor stores. www.flatheaddistillers.com

Ridge Distillery — Custom blend of local herbs go into their absinthe and Silvertip American Dry Gin. Sold at local liquor stores; 406-756-5964; www.ridgedistillery.com

Whistling Andy — Bigfork. A variety of spirits distilled at their location, 8541 Montana 35; 406-837-2620.

Mission Mountain Winery — Dayton, on the shores of beautiful Flathead Lake. Handcrafted award-winning vintages from local and Northwest grapes. Tasting room; 406-849-5524; www.missionmountainwinery.com

Flathead Lake Winery — Wines crafted exclusively from Montana-grown fruit. North of Columbia Falls on Montana 486, near Glacier Park; 406-387-WINO; www.flatheadlakewinery.com

ARTS AND ENTERTAINMENT

Continued from page 16

center stage for national and international performers, from the classical to the avant garde. THE WHITEFISH THEATRE COMPANY stages superb drama, musicals and Black Curtain theater productions. THE ALPINE THEATRE PROJECT, now in its eighth season, is Montana's exclusive professional Equity summer theater, drawing top Broadway and Hollywood talent to the valley.

For 52 years, THE BIGFORK SUMMER PLAYHOUSE has offered high-quality stage and musical repertory theater to sell-out crowds. The playhouse is also host to many other productions throughout the year, including the popular annual performance of the "Nutcracker" by Kalispell's Northwest Ballet School.

>>www.whitefishtheatreco.org; 406-862-5371

>>www.bigforksummerplayhouse.com; 406-837-4886

Shop-hopping

From cozy boutiques to one-stop "Big Boxes," Kalispell and the Flathead Valley's got it. You'll find everything from designer jeans and fine art to great outdoor gear and Western wear while strolling the sidewalks of our historic downtown district.

While you're downtown, browse Kalispell Center Mall's 45 shops and eateries. On Kalispell's north side you'll find our new commercial district, Hutton Ranch Plaza and Spring Prairie Center.

Throughout the Flathead Valley from Bigfork — the Village by the Bay — to the ski resort town of Whitefish, you'll find one-of-a-kind Made in Montana gifts, designer clothing and original art. Our 2,000 artists and craftspeople are always wowing us!

Farmers Markets

Looking for a little local color? Our farmer markets proffer a cornucopia of local gardeners' produce and crafters' handmade wares.

With more than 100 vendors each week, Kalispell's farmers market has a decided social buzz. Open from 9 a.m. to 12:30 p.m. every Saturday in Kalispell Center Mall's west parking lot.

For that matter, all our markets from Whitefish to Bigfork are the perfect gathering place for folks to meet and greet friends and neighbors. And the gardening advice is free.

Cuisine scene

Whether you've got big plans for the day or planning to cash in on a little R & R, Kalispell's dining establishments have whatever your little heart desires, from brick oven pizza chased with a tall, cold microbrew or a thick and sizzling steak or rack of ribs fresh off the open-flamed grill, to wild huckleberry lamb chops or ginger-encrusted wild Alaskan salmon. Need we say more?

Two of our downtown hotspots have a legacy all their own:

Moose's Pizza — Yep. Real swinging doors and a sawdust floor. Kalispell's classic saloon is known for its world-famous (We're not overstating thi) pizza and endless variety of beers. Belly up to the bar where governors, statesmen and businessmen have been conducting business for more than 50 years. Kids welcome.

Norm's News — This old-fashioned soda parlor has been hand-dipping ice cream since 1938. Here's where the eye candy is, well, candy ... in infinite varieties. Try the huckleberry shake or grab a homemade burger and fries. Look for the life-size horse and buggy over Western Outdoor on Main Street.



Daily Inter Lake File Photo

EXPLORE, DISCOVER, RECOVER

Community banking at its best.

- Real estate loans
- Business loans
- Personal and business checking accounts
- CDs
- SBA loans

Apply Online or Call us Today!

HOME LOAN PROFESSIONALS

Purchasing • Refinancing • Construction



La Nita Fitzpatrick
Real Estate Loan Officer
lanitaf@mtwestbank.com
Polson, MT
Polson Mortgage Office



AJ Spear
Real Estate Loan Officer
alex@mtwestbank.com
Whitefish, MT
Kalispell & Whitefish Office



**MOUNTAIN
WEST BANK**

444 West Idaho Kalispell, MT 406.752.2265
601 Spokane Ave Whitefish, MT 406.863.2265
49664 US Highway 93 Polson, MT 406.883.4111
www.mtnwestbank.com





?
 VISITING THE FLATHEAD VALLEY?
 STOP IN AND SEE US AT THE KALISPELL
 CHAMBER OF COMMERCE
 VISITOR INFORMATION CENTER
 15 DEPOT PARK, KALISPELL, MT 59901

?

SAVE THE DATE

Nate Chute | Downtown Kalispell

CALENDAR OF EVENTS

There just isn't a season when we roll up the sidewalks here. Here's a small taste of the high times to be had year-round in downtown Kalispell.

Kalispell Farmers Market — April through October

Early risers get their pick of the freshest locally grown fruits and vegetables every Saturday from 9 a.m. to 12:30 p.m. Located at the west end of Kalispell Center Mall's parking lot, our farmers market draws the crowds to its colorful array produce, arts, crafts, jams and honey and, well, you name it.

Arts in the Park — July 22-24

Depot Park in downtown Kalispell is center stage for Arts in the Park, the Flathead Valley's premier arts festival celebrating 43 years of juried artists and craftsmen, fine food fair and fabulous entertainment. A kaleidoscopic feast for the eyes and ears!

>>www.hockadaymuseum.org; 755-5268

Picnic in the Park — June through August

Folks in Kalispell like to roll up their sleeves during their work week, pull up a patch of lawn and listen to some live music at Depot Park's Summer Concert Series. Bring your picnic basket or take advantage of the tasty food and beverages vendors on site. Music's on us. The lunchtime concerts make for the perfect mid-day break every Wednesday, from 11:30 a.m. to 1:30 p.m. Or wile away the hours relaxing at the Tuesday evening concerts from 7 to 9 p.m.

Thursday!Fest promises to put an exclamation point in front of your weekends all summer long.

Get your groove on with some of the best regional and local bands around every Thursday from 5 to 7:30 p.m. from June through August. It's a big, block party boasting a beer and wine garden, food vendors, local artists and craftsmen. Kids will dig the activity area reserved especially for them.

— Third Street East between First Avenue East and Main

Glacier Rally in the Rockies Vintage Car Show — July 21-24

Get ready to rumble! Vintage and classic cars, pickups and motorcycles roll into town for the weekend-long 2011 Glacier Rod Run. Grab your girl for Friday's street dance at Third Street East and Main, 7-10 p.m. Then grab your shades for Saturday's Parade, on Main at 10 a.m., and Show & Shine on First Avenue West, 10:30 a.m. to 2 p.m.

Taste of Kalispell — Aug. 6

Festive evening of good food, drink and live music; A benefit for and takes place at the Museum at Central School, >>406-756-8381; www.yourmuseum.org/events

Parades

Love 'em? We got 'em!

Our small town parades are the real deal:

St. Patrick's Day, March 17 — The Ancient Order of the Hibernians celebrate the Feast of St. Patrick's Day the traditional way.

Fourth of July — Main Street is bedecked in the Red, White and Blue for a hometown celebration of Independence Day, served up a la mode with an old-fashioned community ice cream social on the lawn at the historic Conrad Mansion.

Northwest Montana Fair Parade — Aug. 19

Rodeo queens, 4-H floats, horses and clowns converge on downtown. Smack in the middle of Fair Week, this Parade deserves a capital "P"!

Christmas City of the North— Friday after Thanksgiving

Parades are a year-round activity in these parts. Families bundle up and bring thermoses of hot cocoa, carolers lift their voices, and Santa comes to town for a warm and lively ringing in of the season.

Northwest Montana Fair and Rodeo — Aug. 17-21

Get excited! We do! From pig wrestlin' to mutton bustin' our county fair is something to write home about. Both the concert line-up and the three nights of Montana PRCA Rodeo sell out our grandstand seats.

The carnival and Midway are a funhouse of wild rides and classic fair food from funnel cakes to corn dogs.

We've even got horse racing, Indian Relay Races, a Demolition Derby and fireworks.

Be prepared to lose a little sleep; >>www.nwmtfair.com

Run Through History 5K run through historic downtown, Sept. 24

From the Museum at Central School, through Woodland Park and past the Conrad Mansion and finishing this 5K will take your breath away. Top it off with a beer garden at the Hockaday Museum of Art and live music — the perfect brew for a perfect day.

Kalispell Art Walk and Holiday Stroll — A festive night of community camaraderie the first Friday in December. Refreshments, live entertainment and joy deck our halls, shops, galleries and museums.

First Night Flathead — A family-friendly New Year's Eve of fun and live music at multiple downtown. Dance yourself right into the New Year!

Winter!Fest Concert Series — A winter's night is the perfect time to cozy up to some fresh and lively folk, blues, bluegrass or gypsy jazz music. These concerts held in downtown Kalispell's historic KM Building will cure even the most stubborn cabin fever.

>>www.downtownkalispell.com



ROOM TO STAY AND PLAY

Photo Credit | Conrad Rowe

LODGING

Whether your style leans toward luxury or thriftiness you'll find plenty of places to hang your hat in Kalispell. Kalispell is home to the best hospitality anywhere in the Northwest.

Kalispell has over 1,600 rooms at your service. The newest additions include the elegant \$21 million **Hilton Garden Inn Convention Center** on Kalispell's south side, featuring first-class convention facilities and the biggest ballroom in town; and the 111-room **Holiday Inn Express** in the Spring Prairie Center on Kalispell's north side which caters to vacationers as well as business clientele. In the heart of downtown you'll find the beautifully restored historic **Kalispell Grand Hotel**, and Rocky Mountain ambiance at the **Red Lion Hotel** with 10,000 square feet of meeting space — including the Grand Ballroom with room for 1,000 guests. Both within an easy walk of Kalispell's museums, a wide variety of restaurants and shopping.

Hilton Garden Inn Convention Center: >>www.stayghi.com

Holiday Inn Express: >>www.kalispellhie.com

Kalispell Grand Hotel: >>www.kalispellgrand.com

Red Lion Hotel: >>www.redlion.com

The **Hampton Inn** offers award-winning customer service as well as conference rooms and banquet space. It is located on the west edge of Kalispell along with the **Comfort Inn**, and both are in close proximity to the Flathead County Fairgrounds.

Comfort Inn: >>www.comfortinn.com/kalispell

Hampton Inn: >>www.kalispell.hamptoninn.com

The **Outlaw Inn** on U.S. 93 South is an ideal location for both the leisure and business traveler, offering spacious guest lodging, ample convention facilities, a variety of dining options and pub.

>>www.outlawhotel.com

If you're looking for a luxury suite hotel with full kitchens, **Glacier Ridge Suites** is the perfect choice.

>>www.glacrieridgesuites.com

The **Aero Inn**, **Blue & White Motel**, **Travelodge**, **Super 8**, **Motel 6**, **Econo Lodge**, **Hilltop Inn** and **America's Best Value Inn/Glacier Peaks** all offer convenience, comfort and affordable accommodations in town.

Aero Inn: >>www.aeroinn.com

America's Best Value Inn/Glacier Peaks: >>www.abvikalispell.com

Blue & White Motel: >>www.blu-white.com

Econo Lodge: >>www.choicehotels.com

Hilltop Inn: >>www.kalispellhilltopinn.com

Motel 6: >>www.motel6.com

Super 8: >>www.super8.com

Travelodge: >>www.travelodgekalispell.com

CAMPGROUNDS AND STATE PARKS

The moonlight's sifting through the pines. Your family's sharing tall tales while the sleepyheads are nodding off. Everyone's invited to come and idle awhile campside in our neck of the woods. Our fresh air's habit-forming.

Campgrounds are aplenty in and around the Flathead Valley. From private campgrounds to state parks and federal lands, and from primitive to posh, we've got a place where you can put your feet up and hang your hat after a busy day playing in our backyard.

Our Montana State Parks are abundant and have amenities to make your camping experience more comfortable and user-friendly — clean restrooms, hot showers, boat launches, playgrounds, hiking trails and hookups, to name a few. Reservations can be made nine months in advance. Call >>**1-855-9CAMPMT (1-855-922-6768.)** or online at <http://fwp.mt.gov/parks/accommodations/reservations/>

Flathead Lake has six state parks, five of which offer camping spots. Wild Horse Island is day-use only. Call Montana, Fish, Wildlife and Parks at >>**406-752-5501.**

Wayfarers, Bigfork. Nature walks along the rocky shoreline, picturesque picnic spots and lake views of the lake; 30 RV camping sites, five tent sites, boat launch.

Big Arm, Southwest end of the lake. Long pebble beach for sunbathing and swimming, nature trail, boat launch; RV and camp sites and a yurt rental. A joint state/tribal fishing license is needed for fishing at this park.

Finley Point, south end of the lake; Boat slips; RV and tent sites.

West Shore, south of Lakeside. Glacially-carved rocky outcrops, access to swimming and boat launch; 22 camp sites.

Yellow Bay, east shore. Wide, gravelly beach for swimming, water-skiing, fishing. Four tent sites, boat slips. A joint state/tribal fishing license required.

Whitefish Lake State Park has 25 secluded campsites and a beach with boating, swimming and fishing access about a half mile west of Whitefish on U.S. 93; >>**406-862-3991**

The Flathead National Forest boasts 34 campgrounds with over 400 campsites. Some require a small fee and others

Continued on next page

Continued from page 20

are free. Visit >>www.fs.fed.us/r1/flathead or call 406-758-5200 or 877-444-6777. A downloadable map showing campground locations and details can be found at >>www.fs.fed.us/r1/flathead/rec/myweb/campground_map_chart_2011_landscape.pdf

Here are few close by:

Tally Lake Ranger District, 650 Wolfpack Way, Kalispell; >>406-758-5204
Tally Lake – 12 miles from Whitefish

Stillwater Lake – 21 miles west of Whitefish

Ashley Lake South – 12 miles from Kalispell

Swan Lake Ranger District, 200 Ranger Station Road, Bigfork;
>>406-837-7500

Swan Lake – 14 miles south of Bigfork

Hungry Horse Ranger District, 10 Hungry Horse Dr., Hungry Horse;
>>406-387-3800

Big Creek – 20 miles from Columbia Falls on the North Fork of the Flathead River

If you prefer a private campground there are plenty to choose from to suit your style. Most have complete hookups so RVers have all the comforts of home while parked beside a peaceful river or facing a fantastic Rocky Mountain backdrop under the Big Sky.

In Kalispell:

Glacier Pines RV Park, 1850 Montana 35 E.;
>>406-752-2760

Greenwood Corp 1, 1100 E. Oregon Lane;
>>406-257-7719

Rocky Mountain Hi Campground, 825 Helena Flats Road; >>755-9573

Spruce Park on the River RV Park, 1985 Montana 35 E.; >>406-752-6321

LaSalle RV Park, 5618 U.S. 2 W., Columbia Falls; >>406-892-4668

Glacier National Park has 13 campgrounds and over 1,000 sites to choose from. Most are first come, first serve. Fish Creek and St. Mary may be reserved in advance. Backcountry users are advised to apply for a campground permit. Details online at >>www.nps.gov/glac/planyourvisit/camping.htm

MEETINGS COME WITH A VIEW IN KALISPELL

PLAN A MEETING

Kalispell offers over 1,600 sleeping rooms and 40,000 square feet of flexible meeting space, along with a variety of event venues to host your next trade show, retreat or sporting tournament.

It is a destination sure to please your attendees with a variety of shops, quality dining, culture, history and entertainment all in an authentic American West town surrounded by natural wonders such as Glacier National Park and Flathead Lake.

To complement the spectacular scenery, the staff of the Kalispell Convention & Visitor Bureau is ready to help with plans for any meeting, large or small. They provide assistance with site inspections, local supplier coordination, spouse/family tours and activity suggestions, brochures, maps and promotional material to help make every meeting productive as well as memorable.

Contact a Kalispell meetings and event planning expert at
>>visitkalispell@kalispellchamber.com or 406-758-2808



EXPLORE, DISCOVER, RECOVER

~ SINCE 1907 ~


**Over 100 Years Of Community Support...
Helping the Flathead Valley Grow!**

We specialize in insuring rural properties. Farms, ranches, seasonal and rental dwellings, from log homes to manufactured and mobile homes.

- EXCEPTIONAL FINANCIAL STABILITY
- EXCELLENT CUSTOMER SERVICE
- INDIVIDUALIZED INSURANCE POLICIES



Flathead Farm Mutual
24 1st Avenue East
Kalispell
(406) 752-7500
www.flatheadfarmmutual.com



**Junkermier · Clark
Campanella · Stevens · PC**

Certified Public Accountants
Business Advisors

jcccpa.com

Working with You to
BUILD MONTANA

Tax Planning & Preparation • Payroll & Bookkeeping • Estate Planning
Accounting & Auditing • Management Advisory Services • Design &
Administration of Retirement & Cafeteria Plans • Business Valuations
Forensic Accounting • Fraud Investigation • Insurance Planning

KALISPELL
44 Second Avenue West
Phone: 406-755-3681
Fax: 406-755-6661

WHITEFISH
401 Baker Avenue
Phone: 406-862-2597
Fax: 406-862-5947



NEVER
MARRY
FOR MONEY.
IT'S FAR *cheaper*
TO BORROW.

Home Loans

One Of America's
TOP BANKS
3 YEARS IN A ROW



**First
Interstate Bank**

Neighbors helping neighbors
in the place we call home.

www.firstinterstate.com



Member FDIC. Equal Housing Lender.

FOCUSED ON THE FUTURE

ECONOMIC OVERVIEW

Growth

Kalispell is Northwest Montana's regional trade center and the Flathead County seat. It tops the chart as Montana's fastest growing city with a 40 percent growth rate in the last 10 years (U.S. Census Bureau). Over the past two decades the city has sustained phenomenal growth, tripling in size from 4.4 square miles in 1990 to 11.25 square miles in 2008.

Flathead County is Montana's second fastest growing among Montana's largest 20 counties and also home to Whitefish and Columbia Falls, two of the top five cities with double-digit growth statewide.

Population

Kalispell: Current – 19,927 | Projected, 2015 – 25,000
 Over 22 percent growth since 2000 census; 26 percent between 1990 and 2000
 Greater Kalispell: 34,000
 Flathead County: Current – 90,028 | Projected-2015 – 100,000
 (NPA Data Services Inc.)

Trade and Industry

As Kalispell and Flathead County grow with the 21st century, our economy has shifted from primarily timber and agriculture to one which also includes tourism and manufacturing. The area's extensive retail development caters to a market of 150,000.

Statewide, even during tough economic times, Montana is a top spot for economic development. In a report from the U.S. Chamber of Commerce, the Treasure State earned top marks for entrepreneurship – one of its biggest growth potentials is in energy development. Coal, oil and natural gas have seen a 35 percent increase in production since 2004. Montana is also leading the nation in renewable energy development. Clean energy development is estimated to create up to 13,000 jobs in Montana by 2020. The state's educated workforce, business and tax climate and quality of life all rank in the top 11 percent nationally (source: Governor's Office of Economic Development; www.business.mt.gov).

Flathead County basic labor income

Nonresident travel = 20 percent
 Wood products = 18 percent
 Other manufacturing = 16 percent
 Federal government = 16 percent
 Agriculture = 8 percent
 Service industry = 8 percent
 Transportation = 7 percent
 Retail = 5 percent
 Metals industry = 2 percent (Source: University of Montana, 2011)

Development

Kalispell and the Flathead Valley experienced an unprecedented residential and commercial building boom from 2004 to 2007. Growth reached epic proportions on Kalispell's north side, adding 3/4 million square feet of major retailers and restaurants with a total value of \$112.5 million.

Spring Prairie Center – Third phase of three-phase project received preliminary plat approval in January for 10 building sites on 22 acres on Kalispell's north side.

Hutton Ranch Plaza – 46-acre development including 14-screen movie theater with stadium seating, opened in 2008.

Walmart Supercenter – Opened 2010.

Glacier Park International Airport embarks on an \$8 million upgrade this summer. Immanuel Lutheran Communities of Kalispell launched a \$14 million state-of-the-art rehabilitation center project in December 2010. Completion is projected for spring 2012.

Construction began in January on \$2.44 million renovation of historic Flathead County Courthouse campus.

Kalispell's historic downtown district was awarded a \$75,000 National Park Service grant.

Infrastructure

The southern portion of the new U.S. 93 Alternate Route, a \$76 million federally-funded bypass project, was completed November 2010. Its first leg, the Reserve Connector on Kalispell's north side, was completed in 2007, linking the new Glacier High School campus with U.S. 93. When completed, the northern route will connect U.S. 2 to West Reserve Drive near U.S. 93.

Kalispell Fire Department – \$3.1 million Fire Station 62 on Kalispell's north side added in 2006; third station in planning phase.

\$1.25 million remodeling project for Kalispell's downtown fire station began November 2010. Targeted completion date is spring 2011.

911 Center – \$6 million high-tech headquarters completed in 2010 consolidates all Flathead County's emergency operations

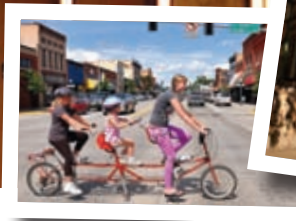
Glacier Park International Airport – \$8 million master plan and upgrade in 2011 to streamline traffic patterns, reconstruct taxiway and remodel interior. Major runway reconstruction project completed in 2009.

Residential

Over much of the last decade Kalispell set the benchmark for residential growth in the state. In 2006 real estate sales topped \$1.2 billion. In 2007 there were over 900 home starts. While the boom years have subsided for now, a restrained recovery is likely.

Home construction is under way at Silverbrook

Continued on next page



Nate Chute | Daily Inter Lake

TEN REASONS TO DO BUSINESS IN MONTANA

1. Wireless 3G and up to 25 mbps through cable and 10 mbps through DSL with multiple providers available.
2. Ranked No. 6 for Business Tax Climate by TaxFoundation.org.
3. A pro-business, pro-manufacturing mindset at the municipal and county level.
4. Large talent pool of potential employees with a "Work hard. Play hard." philosophy.
5. With world-class recreational opportunities within steps of your front door, this is where every lifestyle CEO wants to be.
6. A commute time measured in minutes.
7. Ease of recruiting talent based on phenomenal health care, quality schools and safe communities.
8. The Canadian market is 60 minutes away.
9. Direct flights to Seattle, Salt Lake City, Minneapolis, Las Vegas, Denver, Chicago and Atlanta.
10. Directly on the Amtrak and Burlington Northern Santa Fe rail line.

— Provided by Montana West Economic Development

ECONOMIC OVERVIEW

Continued from page 22

Estates, a 325-acre premier custom home community bordering the Stillwater River north of Kalispell. Its sophisticated infrastructure plan features walking paths, tennis and basketball courts, a clubhouse and a town center. On Kalispell's west side, the 640-acre Starling development is the largest master planned community in the city's history, with 3,000 homes to be built in the next 20 to 30 years. Just six minutes from Kalispell, Buffalo Mountain is a new residential development on 500 acres of forested hills and rolling meadows. To our south Siderius Commons is a planned 207-acre housing development. Moderately-priced homes, town homes and apartments and a commercial district are part of the master plan.

Healthcare

Under the expansive umbrella of Northwest Healthcare in Kalispell, all of Northwest Montana has access to state-of-the art technology and comprehensive health care services comparable to much large metropolitan areas, from complex surgeries to orthopedic care and preventative programs.

Employment

Major employers — Kalispell Regional Medical Center, Kalispell School District 5, TeleTech, Plum Creek Timber Company, Applied Materials, Walmart, LC Staffing, Flathead Valley Community College and National Flood Services. As of 2010, Flathead County's work force numbered nearly 43,000. The recent downturn in the national economy had a negative effect on our construction industry, traditionally one of the area's most influential labor forces. Flathead County average hourly wage 2009 - \$15.48
Flathead County per capita income 2008 - \$34,982
Montana per capital income 2008 - \$34,622

Transportation

Glacier Park International Airport — Direct flights to seven major U.S. hubs
Amtrak — Twice daily stops in nearby Whitefish

Education

Kalispell supports Flathead Valley Community College, the largest of Montana's three comprehensive two-year public community colleges with a student enrollment of over 4,000; two high schools — Glacier High School opened its doors in 2007; a large middle school for grades six to eight, five elementaries, and an additional five private schools.

Progress and planning, advanced telecommunications, competitively priced utilities, and our educated workforce and desirable tax climate combine to make the Flathead a place where companies can base their businesses while taking advantage of the limitless recreational opportunities the area has to offer.

In 2009, Business Facilities magazine ranked Montana eighth nationally for best business climate, and sixth for overall tax climate

Resources

Kalispell Chamber of Commerce: kalispellchamber.com/economy
Montana West Economic Development: 406-257-7711; dobusinessinmontana.com
City of Kalispell: www.kalispell.com

LIVING HERE



Daily Inter Lake File Photo

Respecting People. Impacting Business.®

You have a need.
We have a solution.

Whether you're shifting gears with your career or your business, Express Employment Professionals can help. Simply share your needs, and our staffing experts will help you meet your goals. Call, come in, or go online today!

- Health care
- Administrative
- Assembly
- General Production

4 Sunset Plaza Ste.101
Kalispell, MT 59901
(406) 257-2255
www.expresspros.com



Garrett Cheen | Daily Inter Lake

STATE OF THE ART WITH HEART

HEALTHCARE

Northwest Healthcare

At the heart of the Flathead's medical community is Northwest Healthcare, the most comprehensive collection of health care services in Northwest Montana.

Kalispell Regional Medical Center (KRMC), Northwest Healthcare's flagship hospital, offers a full array of regional health services and medical technology. In March KRMC broke ground on the new \$42 million Surgical Services tower. Phase one includes three floors and will ultimately add 12 new operating rooms and 66 new patient beds. Two more floors are included in future plans. The project is targeted to be completed by October 2012.

KRMC's cancer center, which opened in 2003, offers superior access to diagnostic and medical imaging capabilities. In 2003 the center invested in Image-Guided Radiation Therapy (IGRT), offering cancer patients greater cure possibilities with fewer side effects, the first system of its kind in Montana. The center also offers partial breast irradiation, a cutting edge alternative therapy for early stage breast cancer with fewer side effects and a much shorter course of treatment.

The new 3,000 square-foot **Bass Breast Center** provides comprehensive care, surgical oncology and breast surgery equal to that found in the largest urban medical centers.

All types of heart surgery except for heart transplants can be performed locally by KRMC's experienced cardiac surgery team. KRMC's **cardiovascular care program** includes interventional cardiology, cardiac rehabilitation and wellness programs.

Northwest Healthcare also manages the 110-bed **Brendan House** transitional and long-term care residential facility, Kalispell Medical Equipment, Occupational Health Services, a pharmacy and several physician clinics.

Northwest Healthcare's **Summit Fitness Center** opened in 1996, an 84,000 square foot facility of comprehensive fitness and rehabilitative services overseen by a medical advisory committee. The Summit features a 25-yard, six lane

multi-use pool, therapy pool, whirlpool spa, locker rooms with steam rooms and saunas, a family changing room, cardiovascular mezzanine, climbing wall, regulation size gymnasium, four indoor tennis courts, two racquetball courts, a walk/jog track, large weight training area, physical therapy and cardiac rehabilitation departments, a child care center and an after-school program. The Summit recently added a Paris Speed School agility and strength training facility. With a medical staff of more than 250 – a full range of specialists and family practitioners – and more than 2,200 employees, Northwest Healthcare is the largest private employer in Flathead County and operates as a nonprofit corporation Northwest with a local board of directors. >>www.krmc.org

Flathead Orthopedic Center

Flathead Orthopedic Center's \$2.5 million expansion in 2006 added a new urgent orthopedic care offering multi-faceted care and rehabilitation with a strong focus on sports medicine, on-site physical and occupational therapy, and pre-operative and post-operatives services. The center has achieved accreditation with the Accreditation Association for Ambulatory Health Care.

North Valley Hospital

For more than 100 years North Valley Hospital in Whitefish has served the north Flathead Valley.

In 2007 a completely new \$26.25 million facility opened, offering some of the finest medical facilities of any resort community in the country. The 82,352 square-foot alpine-style hospital is centrally located on 45-acres near the intersection of Montana 40 and U.S. 93. The same-day surgery center features 12 private recovery bays.

MedNorth Urgent Care

The new walk-in facility which opened in 2009 in the Spring Prairie Center offers comprehensive care to the community seven days a week.

Leading-edge Technology with a Personal Touch

- Minimally-Invasive Surgery Center featuring *da Vinci* Robot
- 24-hr Emergency, Lab and Imaging
- Patient-Centered Care in a Healing Environment
- Winter Urgent Care Clinic at Whitefish Mountain Resort
- Summer Urgent Care Clinic in West Glacier
- Direct billing on all Canadian Travel Insurance Providers

NORTH VALLEY
HOSPITAL

A different kind of hospital. A different kind of care.

1600 Hospital Way
Whitefish, MT 59937
406-863-3500
888-815-5528 (in MT)
www.nvhosp.org





KALISPELL SCHOOLS SET THE BENCHMARK EDUCATION

At 2,700 students, our growing community's high school enrollment is comparable to that of Montana's largest cities. In 2007 we opened a new second high school, **Glacier High School**. The \$35 million, 243,000 square-foot campus features a commons area, seven science and computer labs, performance hall, blackbox theater, and porticos with magnificent views of the surrounding mountains.'

Both Glacier and **Flathead High School** have joined the national movement toward the "career clusters" concept, which encourages students to focus on targeted areas of study toward a career path and post-high school plans.

Kalispell's commitment to quality education is literally written in stone. A new high school, remodeled existing high school, and a renovated and expanded middle school — all within the last four years — are overwhelming evidence of our pursuit of excellence in academic opportunities for our youth.

Our freshman get a jump on their futures with **Freshman Academy** — an innovative student/teacher team approach focusing on core academics, good study habits and character building. GHS students have the opportunity to enroll in **Advanced Placement** classes — rigorous, college-level courses for both high school and university credit.

In 2004 Flathead High School became the only high school in Montana to earn accreditation under the **International Baccalaureate Diploma Programme**. A challenging, two-year college preparatory curriculum for juniors and seniors, IB fosters global understanding and responsible citizenship, and culminates with a diploma recognized for excellence throughout the world.

With the addition of Glacier High School, Kalispell is now represented by two AA sports programs. Team sports attract broad-based support in the community, having consistently made the AA play-offs and been nationally ranked over the past several years.

Our high school speech and debate teams have raised the regional bar for forensic excellence. Glacier's team won the state championship this year and took second last year. Flathead, which captured second this year, has won 10 state titles in 13 years.

Other strong programs in music and drama, vocational agriculture and engineering earn our high schools' reputation for academic excellence.

Juniors and seniors can enroll in Flathead Valley Community College classes through the **Running Start Program**, earning dual credits and getting a jump on their college careers.

Kalispell Middle School serves grades six through eight. The building's \$11 expansion was completed in 2007 and includes a new 8,000 square-foot gym, 24,000 square-foot classroom wing and a commons/cafe/terium. A reconfiguration of the former Kalispell Junior High School in 2007 enables middle school students to transition more effectively into their high school years, while freshmen now attend classes with the rest of the high school student body. Additionally, Kalispell has five elementary schools and five private schools.

The Kalispell Montessori environment focuses on high academic standards and individualized programs for children.

Kalispell Montessori Elementary — First through sixth grades.

Woodland Montessori Preschool — State of Montana fully licensed day care for early learners through kindergarten.

Founded in 1917, **St. Matthew's Catholic School** offers a Christian-based education for kindergarten through eighth grade within its parish community.

Stillwater Christian School, founded in 1980, has an enrollment of over 300 students in kindergarten through grade 12. Stillwater Christian Learning Center preschool was added in 2009.

Kalispell is also home to about 550 registered home-schooled children; Flathead Home Educators Association: www.fheaonline.org.

Flathead Valley Community College

FVCC is the largest of Montana's three comprehensive two-year community colleges. Nowhere else can area residents find such a high caliber of education at such an affordable price.

Its state-of-the-art facilities and cutting-edge technologies provide students with an outstanding foundation for their first two years of college while preparing them for a successful, seamless transfer to colleges and universities in Montana and beyond.

FVCC also offers Associate of Applied

Continued on next page

KALISPELL PUBLIC SCHOOLS

406-751-3434
>>www.sd5.k12.mt.us

FLATHEAD COUNTY SCHOOLS

406-758-5720
>> www.sd5.k12.mt.us

KALISPELL MONTESSORI SCHOOLS

Woodland Montessori School — Early Childhood, (406) 755-3824
Kalispell Montessori Center — Elementary, (406) 755-3826
>>www.kalispellmontessori.com

ST. MATTHEW'S SCHOOL

(406) 752-6303
>>www.stmattsaints.org

STILLWATER CHRISTIAN SCHOOL

(406) 752-4400
>>www.stillwaterchristianschool.org

TRINITY LUTHERAN SCHOOL

(406) 257-6716
>>www.trinitykalispellschool.org

Photo credit Garrett Cheen | Daily Inter Lake

LIVING HERE



DISCOVER YOUR POTENTIAL

EDUCATION

Continued from page 25

Science degrees and certificates in over 50 career and technical fields, from nursing and surveying to jewelry arts and heavy equipment operations that prepare students to enter rewarding careers immediately following graduation.

For 11 consecutive years, 90 percent or more of FVCC job-seeking graduates have successfully secured employment. Out those employed from the 2009-2010 graduating class, 94 percent are working in Flathead and Lincoln Counties.

FVCC enrolls over 4,000 students annually and has experienced a 66 percent growth in enrollment over the last four years. The college offers a small classroom environment with the average student to faculty ratio of 17 to 1. An outstanding award-winning faculty, many of whom have studied all over the world, provide the personalized attention students need to succeed.

FVCC is a progressive institution of higher learning that continually offers new opportunities for its students and the community. The college works closely with the local workforce and workforce development agencies to offer programs that meet the needs of area employers.

The college's study abroad programs take students across the globe, from Peru to Venice to Bali. The college recently launched a Scholars Program providing highly motivated students access to cross-disciplinary honors courses. In 2008, the college opened its Early Childhood Center providing students and the community access to premium child care. In 2010, FVCC, in partnership with Nourish the Flathead, established the Flathead Community Garden, providing community members the opportunity to rent garden plots during the summer months. On Friday evenings during the fall and spring semesters, patrons can enjoy delicious three-course dinners prepared in the college's instructional kitchen by the culinary arts students.

FVCC Theatre produces exceptional, affordable entertainment and the Multi-cultural Affairs program sponsors numerous free lectures and special events throughout the year for the community to enjoy. The Continuing Education Center provides affordable non-credit special interest courses and programs, from Kid's College to customized workforce training for lifelong learners of all ages. FVCC is home to the champion Logger Sports Team.

FVCC is accredited by the Northwest Commission of Colleges and Universities. Together with its distance learning division in Libby, 90 miles northwest of Kalispell, the college serves over 100,000 people a year, over 5.6 million acres.

FLATHEAD VALLEY COMMUNITY COLLEGE

>>(406) 756-3822; (800) 313-3822;

>>www.fvcc.edu

family-school partnership • respecting cultural diversity •

utilizing fully integrated curriculum • promoting environmental stewardship

the thrill of discovery

WOODLAND MONTESSORI SCHOOL
MSAC Accredited/AMS Full Member
Preschool - Kindergarten

MONTANA MONTESSORI TEACHER EDUCATION INSTITUTE
MACTE Accredited • AMS Full Affiliate
Early Childhood & Lower Elementary Certification
www.mtmont.com
755-3824

KALISPELL MONTESSORI ELEMENTARY
1st-6th Grade
www.kalispellmontessori.com
755-3826

the joy of learning

recognizing universal human values • honoring child-centered education • fostering

facilitating motivation for lifelong learning

Kalispell Chamber of Commerce 2011 Visitor Directory

Phone: 406-758-2800 | Fax: 406-758-2805 | www.kalispellchamber.com | info@kalispellchamber.com

Air Line Services & Transportation

Allegiant Airlines _____ (702) 851-9051
 Glacier Jet Center _____ (406) 755-5362
 Glacier Park International Airport _____ (406) 257-5994
 Red Eagle Aviation _____ (406) 755-2376

Art Galleries

Montana Frameworks & Gallery _____ (406) 257-2300

Automobile Rental

Alamo/National Car Rentals _____ (406) 257-7144
 Enterprise Rent a Car _____ (406) 755-4848

Books/Libraries

Flathead County Library _____ (406) 758-5821
 Flathead County Library Foundation _____ (406) 758-2469

Breweries

Great Northern Brewing Company _____ (406) 863-1000
 Tamarack Brewing _____ (406) 844-0244

Boat Tours

Far West Boat Tours _____ (406) 844-2628
 Glacier Park Boat Co. _____ (406) 257-2426

Campers/RV's

Gardner's RV & Trailer Center _____ (406) 752-7683
 Pierce RV Center _____ (406) 752-8050

Clothing

Maurices _____ (406) 752-7424

Day Spas

Amore' Salon & Spa _____ (406) 755-5513

Dog Sledding

Dog Sled Adventures _____ (406) 881-2275

Entertainment/Music

Alpine Theatre Project _____ (406) 862-9050
 Full Throttle Entertainment &
 Northern Lights Laser Tag Park _____ (406) 250-8902
 Glacier Jazz Stampede/
 Flathead Valley Jazz Society _____ (406) 862-3814
 Glacier Symphony and Chorale _____ (406) 257-3241
 Majestic Valley Arena _____ (406) 755-5366
 Montana Raceway Park, Inc. _____ (406) 257-7223
 Signature Theaters _____ (406) 752-7804

Fishing Guides/Outfitters

A Able Fishing Charters & Tours _____ (406) 844-0888
 Bagley Guide Service _____ (406) 837-3618
 Flathead Lake Charter Service _____ (406) 837-3632
 Mo Fisch Charters _____ (406) 755-4414

Fishing Guides/Outfitters Rafting

Wild River Adventures _____ (406) 387-9453

Fitness

Kalispell Athletic Club _____ (406) 752-2880
 The Summit _____ (406) 751-4100

Golf

Buffalo Hill Golf Club _____ (406) 756-4547
 Flathead Village Greens _____ (406) 752-4666
 Golf NW _____ (406) 837-7373

Grocery/Health Food

Albertson's Food & Drug _____ (406) 257-7127
 Glacier Wholesalers _____ (406) 752-4479
 GNC Living Well _____ (406) 257-7876
 Mountain Valley Foods _____ (406) 756-1422
 Natural Choice Products _____ (406) 257-9118
 Rosauers _____ (406) 755-5088
 Super 1 Foods - Downtown _____ (406) 755-3144
 Super 1 Foods - Evergreen _____ (406) 752-3631
 Withey's Health Foods _____ (406) 755-5260

Horseback Riding

Bar W Guest Ranch _____ (406) 863-9099

Skating

Flathead Valley Hockey Association _____ (406) 758-7813

Jewelers

Coins & Carats Inc. _____ (406) 752-2646
 Riddle's Jewelry _____ (406) 755-8400
 Wheeler Jewelry _____ (406) 752-6809

Limousine Service

Wild Horse Limousine _____ (406) 756-2290

Lodging - Cabins & Vacation Homes

Historic Tamarack Lodge & Cabins _____ (406) 387-4420

Lodging - Campgrounds

Glacier Pines RV Park _____ (406) 752-2760
 Greenwood Corp 1 _____ (406) 257-7719, X2
 LaSalle RV Park _____ (406) 892-4668
 Montana State Parks _____ (406) 755-2706 X 2
 Spruce Park on the River _____ (406) 752-6321

Lodging - Cabins & Vacation Homes

Rocky Mountain Hi RV Park
 & Campground _____ (406) 755-9573

Lodging - Guest Ranch/Resorts

Averill's Flathead Lake Lodge _____ (406) 837-4391
 Bar W Guest Ranch _____ (406) 863-9099
 Meadow Lake Resort _____ (406) 892-8700
 Oettiker Creek Ranch _____ (406) 863-9063

Lodging - Ski Resorts

Whitefish Mountain Resort _____ (877) 754-3474 (SKI-FISH)

Lodging - Hotels/Motels

Aero Inn _____ (406) 755-3798
 America's Best Value Inn/Glacier Peaks _____ (406) 756-3222
 Belton Chalet _____ (406) 888-5000
 Best Western Kwa Taq Nuk _____ (406) 883-3636
 Best Western White Oak Grand Hotel
 & Business Center _____ (406) 857-2388
 Blue & White Motel _____ (406) 755-4311
 Comfort Inn _____ (406) 755-6700
 Glacier Park Inc. _____ (406) 892-2525
 Grouse Mountain Lodge _____ (406) 862-3000
 Hampton Inn Kalispell _____ (406) 755-7900
 Hilton Garden Inn Kalispell _____ (406) 756-4500
 Historic Kalispell Grand Hotel _____ (406) 755-8100
 Holiday Inn Express _____ (406) 755-7405
 La Quinta Inn & Suites _____ (406) 257-5255
 Red Lion Hotel Kalispell _____ (406) 751-5050
 Travelodge _____ (406) 755-6123

Motorcycle

Fastoys _____ (406) 257-8697
 Lelands Honda - Suzuki Inc. _____ (406) 752-2911

Museum/Historical

Conrad Mansion Museum _____ (406) 755-2166
 Hockaday Museum of Art _____ (406) 755-5268
 Museum at Central School _____ (406) 756-8381

Party Rentals & Supplies

Wedding Services
 Celebrate Event & Party Rental _____ (406) 862-4636

Rafting

Glacier Guides / Montana Raft Co. _____ (406) 387-5555
 Glacier Outdoor Center/Glacier Raft Co. _____ (406) 888-5454
 Great Northern Whitewater Resort _____ (406) 387-5340

Real Estate - Property

Management Vacation Rentals
 Five Star Rentals & Property Management _____ (406) 862-5994

Restaurant/Catering

Bajio Mexican Grille, LLC. _____ (406) 756-1948
 Blue Canyon Restaurant _____ (406) 758-2583
 Bojangles Diner _____ (406) 755-3222

Cafe Max Soup Company of Montana _____ (406) 257-7687
 Cold Stone Creamery _____ (406) 757-2653
 Dominos Pizza _____ (406) 756-0330
 Fabulous Food _____ (406) 257-4294
 Famous Dave's BBQ _____ (406) 752-7427
 Five Guys Burgers & Fries _____ (406) 752-4567
 Frugals _____ (406) 257-6710
 Great Harvest Bread _____ (406) 755-9733
 HuHot Mongolian Grill _____ (406) 755-0757
 John's Angels Catering LLC. _____ (406) 270-4600
 Mackenzie River Pizza Co. _____ (406) 756-0060
 McDonalds _____ (406) 752-0505
 Montana Coffee Traders _____ (406) 756-2326
 Mooses Saloon _____ (406) 755-2338
 Norms News _____ (406) 756-5466
 North Bay Grille _____ (406) 755-4441
 Papa Murphy's Take N Bake Pizza _____ (406) 257-8787
 Perkins Restaurant & Bakery _____ (406) 257-7375
 Pizza Hut _____ (406) 752-4960
 Qdoba Mexican Grill _____ (406) 755-8150
 Stoneground Bakery, Inc. _____ (406) 257-0312
 Subway - Kalispell _____ (406) 755-2424
 Sykes _____ (406) 257-4304
 Tamarack Alehouse & Grill _____ (406) 844-0244
 The Boiler Room _____ (406) 260-4122
 Vista Linda Restaurant and Catering _____ (406) 857-3158

Retail Stores

Apple Barrel _____ (406) 755-7753
 Costco Wholesale _____ (406) 758-2500
 Glacier Quilts, Inc. _____ (406) 257-6966
 J C Penney _____ (406) 752-7374
 Sears Authorized Retail Dealer _____ (406) 755-5678
 Sleep City USA _____ (406) 755-7754
 Target _____ (406) 751-8700
 The Toggery Inc. _____ (406) 755-1500
 Walmart _____ (406) 257-7535

Retail Stores Gifts and Confections

Glacier Discount/4th Ave by the Tracks _____ (406) 755-4499

Shopping Centers

Kalispell Center Mall _____ (406) 751-5052

Sporting Goods

Montana Mystique Fly Shop _____ (406) 752-5331
 Snappy Sport Senter Inc. _____ (406) 257-7525
 Sportsman Ski Haus _____ (406) 755-6484
 Wheaton's _____ (406) 257-5808

Transportation

Rocky Mountain Transportation Inc. _____ (406) 863-1200
 Drive 4U _____ (406) 212-7361
 Hanson's Carriage Company _____ (406) 261-6791
 Harlow's Bus Sales, Inc. _____ (406) 755-4272
 Jim's Taxi _____ (406) 890-8920

Travel Agencies

Flathead Travel Service _____ (406) 752-8700

Water Sports

Jesco Boat Center _____ (406) 752-2112

Water Sports/Snowmobiling

Wild Wave Watercraft Rentals /
 Winter Wonderland Sports _____ (406) 257-2627

Wedding Services

Hanson's Carriage Company _____ (406) 261-6791
 Northwest Montana Wedding
 & Event Professionals _____ info@mymontanawedding.com

Western Wear

Western Outdoor _____ (406) 756-5818

Wineries

Flathead Lake Winery _____ (406) 249-9178
 Mission Mountain Winery _____ (406) 849-5524

Kalispell Chamber of Commerce 2011 Business Directory

Phone: 406-758-2800 | Fax: 406-758-2805 | www.kalispellchamber.com | info@kalispellchamber.com

Accounting

Gilbertson, Wynne & Associates, PLLP (406) 752-1435
 Glacier Tax Advisors, Inc. (406) 261-9052
 Jackson Hewitt Tax Service (406) 756-1212
 John C. Barrett, CPA (406) 755-8868
 Jordahl & Sliter (406) 752-1040
 Joseph Eve (406) 752-5225
 Junkermier Clark Campanella Stevens PC (406) 755-3681
 Liberty Tax Service (406) 755-1040
 R Gunlikson & Associates CPA PC (406) 752-3449
 Swiftcurrent Consulting & Accounting PC (406) 755-5428

Advertising/Marketing

ALLGlacier.com by Vertical Media (307) 733-5681
 Chandler Communication (406) 590-4279
 Edge Communications (406) 837-2061
 SnowGhost Design, Inc. (406) 755-7703
 Ziplocal Phone Directories (406) 370-2727

Appliances/Electronics

Aaron's Sales & Lease Ownership (406) 755-9005
 Vann's (406) 257-9530

Architects

Architects Design Group, PC (406) 257-7125

Architects/Engineering

APEC, Inc. (406) 755-1333
 CTA Architects Engineers (406) 257-8172

Associations

Flathead 4-H Foundation (406) 758-5553
 Flathead Building Association (406) 752-2422
 Flathead Business & Industry Association (406) 752-8681
 Flathead Community Foundation (406) 756-9047
 Glacier Natural History Assoc. (406) 888-5756
 Kalispell Downtown Association (406) 756-4200
 Kalispell Sunrise Lions (406) 257-6860
 Montana West Economic Development (406) 257-7711
 National Parks Conservation Association (406) 862-6722
 Northwest Montana Association of Realtors (406) 752-4197

Attorneys

Brian C Tanko Esq. (406) 257-3711
 Christensen Moore Cockrell
 Cummings & Axelberg (406) 751-6000
 Christopherson Law Office, PC (406) 752-1100
 Crowley Fleck (406) 752-6644
 Eric Hummel Attorney at Law PLLC (406) 755-6160
 Fisher Law Firm (406) 755-4212
 George Best Attorney at Law (406) 752-8731
 Glazier Law Firm PC (406) 756-2004
 James H Cossitt Attorney at Law (406) 752-5616
 Johnson Berg McEvoy & Bostock (406) 755-5535
 Kalvig & LeDuc, PC (406) 257-6001
 Ogle & Worm (406) 752-7550
 Scott & Kienzie, P.A. (406) 752-1250
 Vanessa M. Ceravolo, Attorney
 & Counselor at Law (406) 755-1958

Auctions

Alpine Auction Services Inc. (406) 257-6832

Audio/Video Design

Eyehear Audio Video Designs, Inc. (406) 752-3536

Auto Body Repair

Able Body Shop (406) 752-1125
 Collision Craft (406) 752-4885
 OHS Body Shop (406) 752-8202

Automobile Dealers

De Pratu Ford (406) 863-2511
 Eisinger Honda (406) 755-7414
 Eisinger Motors (406) 755-5555
 Kalispell Toyota (406) 755-6060
 Montana Auto Center (406) 752-5511

Automobile Parts & Services

Bolsters Towing (406) 752-4528
 CARQUEST Auto Parts (406) 755-3659
 Jack's Diesel Service Inc. (406) 257-9225
 Kalispell Auto Parts (NAPA) (406) 755-5248
 Loren's Auto Repair Inc. (406) 755-7757
 Midas Auto Service Experts (406) 756-9292
 Northwest Automotive, Inc. (406) 756-9511
 Pro Clean Carwash & Valvoline Express Care (406) 756-2433
 Rudy's Autosound (406) 756-6960

Tire Rama Service Centers (406) 755-4660

Automobile Rental

Alamo/National Car Rentals (406) 257-7144
 Enterprise Rent a Car (406) 755-4848

Awards/Engraving

Silvertip Engraving (406) 752-4904
 The Engraver, LLC (406) 892-5351

Banks

Escrow Services (406) 257-8186
 First Interstate Bank Downtown Kalispell (406) 756-5200
 First Interstate Bank Eureka (406) 297-3116
 First Interstate Bank Evergreen (406) 758-7600
 First Interstate Bank Hutton Ranch (406) 756-5222
 First Interstate Bank Polson (406) 883-8857
 First Interstate Bank Whitefish (406) 863-8888
 First Montana Bank (406) 755-9999
 Flathead Bank (406) 752-4050
 Glacier Bank (406) 758-4345
 Glacier Bank - Bigfork (406) 837-5980
 Glacier Bank - Buffalo Hill Kalispell (406) 756-4270
 Glacier Bank - Columbia Falls (406) 892-4700
 Glacier Bank - Downtown Kalispell (406) 756-4200
 Glacier Bank - Eureka (406) 751-4975
 Glacier Bank - Evergreen (406) 758-4312
 Glacier Bank - Libby (406) 293-4109
 Glacier Bank - Polson (406) 883-8300
 Glacier Bank - Reserve Drive, Kalispell (406) 758-8200
 Glacier Bank - Whitefish (406) 863-6300
 Mountain West Bank, N.A. - Whitefish (406) 863-2265
 Mountain West Bank, N.A. - Kalispell (406) 752-2265
 Rocky Mountain Bank (406) 751-5070
 Three Rivers Bank of Montana - Idaho (406) 755-4271
 Three Rivers Bank of Montana - Meridian (406) 755-5432
 US Bank (406) 257-5363
 Valley Bank (406) 752-7123
 Wells Fargo Bank Kalispell Downtown (406) 751-5009
 Wells Fargo Bank Kalispell North (406) 756-4005
 Wells Fargo Financial MT Inc. (406) 257-2307
 West One Bank (406) 755-9781

Beauty Supply

Wakefield Beauty Connection (406) 752-8094

Beverage

Coca Cola Bottling Co. (406) 755-2653
 Flathead Beverage Co. (406) 755-4203
 Flathead Lake Winery (406) 249-9178
 Fun Beverage Inc. (406) 752-1455
 Mission Mountain Winery (406) 849-5524
 Pepsi Cola Co. (406) 755-5060
 The Great Northern Brewing Company (406) 863-1000

Building Contractors

Building By Jon (406) 752-3131
 Distinctive Countertops & Cabinetry (406) 751-5000
 Eichner Builders Inc. (406) 752-1178
 Ford Construction (406) 755-5224
 Glimm Homes (406) 756-9052
 Graham Design & Construction, LLC (406) 250-7600
 Great Bear Builders Inc. (406) 752-8476
 Greg Bain & Co. (406) 752-2886
 Hammerquist Casalegno Inc. (406) 257-6856
 Kalispell Montana Log Homes (406) 752-2992
 Kalispell Overhead Door Service Inc. (406) 755-4120
 Kramer Enterprises, Inc. (406) 257-0966
 Lang Construction Inc. (406) 837-5618
 Lee Selders Construction (406) 250-5337
 Meredith Construction Co. (406) 752-4200
 Montana Build Inc. (406) 862-4975
 Northwest Cabinet Works (406) 752-8383
 R Porch Construction (406) 755-8028
 Robert W Ross Building Contractor Inc. (406) 257-5550
 Ron Terry Construction Inc. (406) 755-7516
 Swank Enterprises (406) 752-5411
 Timberlake Builders Inc. (406) 862-8561
 Westcraft Homes (406) 862-3300
 BMC West (406) 752-8393
 Montana Ace Hardware (406) 755-9701
 Northwest Drywall & Building Supply Inc. (406) 752-2644
 ProBuild (406) 752-9663
 RBM Cabinets & Lumber, Inc. (406) 892-4208
 Wrights Kalispell Lumber (406) 257-3625

Building Materials/Retail Stores

Western Building Center (406) 755-6411

Home Depot (406) 755-5333
 Lowes (406) 758-3030

Business Consulting

Business Class (406) 862-3172
 Fifth Wave Leadership (406) 752-9270
 Glacier Cross Inc. (406) 257-8822

Business Services

Beargrass Marketing, Inc. (406) 862-8746
 Montana Records Management (406) 443-0307
 Olson Search International (406) 756-5151

Carpet/Flooring

Poiema - Flooring America (406) 752-4995

Carpet/Flooring/Lighting Services

Masterpiece Carpet One Floor & Home (406) 752-0924

Cash Services

National Quik Cash (406) 257-2814

Child Care

Discovery Developmental Center (406) 756-7295
 Parenting With Dignity (406) 752-8035

Chimney Sweep/Inspection/ Hearth and Home/Fireplaces

Anderson's Masonry Hearth & Home (406) 755-2497

Chiropractors

Atlas Chiropractic PLLC (406) 257-4001

Church

Bet Harim, Jewish Community
 of Flathead Valley (406) 756-5159

Communications

Bresnan Communications (877) 273-7626
 Cell Phone Repair (406) 257-2348
 Cellular One (406) 756-5125
 Cellular Plus (406) 260-4004
 Nomad Technologies Inc. (406) 755-1721
 Vision Net, Inc. (406) 467-4720

Communications/Internet Providers

CenturyLink (406) 758-1000
 Fisher Video Conferencing (406) 890-6184

Community Services

Aware, Inc. (406) 756-1435
 Citizens For A Better Flathead (406) 756-8993
 Community Action Partnership (406) 752-6565
 Flathead CARE (406) 751-3970
 Flathead Industries (406) 755-7656
 Kalispell Farmer's Market (406) 752-3350
 Salvation Army (406) 257-4357
 United Way for Northwest Montana (406) 752-7266

Computer Services

Byte Savvy, LLC (406) 257-3394
 Cerberus Computing Systems (406) 247-0427
 Radioactive (406) 257-5999
 TeleTech (406) 751-3112
 Virtual Circuit Designs (406) 212-2165

Concrete/Excavating and Paving

Glacier Paving Inc. (406) 257-8181
 Knife River (406) 752-2755
 LHC Inc. (406) 758-6400

Conference Center

Glacier Camp & Conference Center (406) 844-2114

Counseling

Flathead Valley Chemical Dependency (406) 756-6453

Counseling/Neuro Therapy

Affective Neurosciences (406) 752-6634

Credit Services

CBK Services (406) 257-5093
 Collection Center/Checkrite (406) 257-7555
 Stellar Recovery, Inc. (406) 755-9522

Credit Unions

Park Side Federal Credit Union (406) 755-7283
 Whitefish Credit Union (406) 862-3525

Dentists

Dental Distinctions, PC _____ (406) 755-4166
 Dr Carol Soranton DDS, PC _____ (406) 756-9393
 Dr Peter Nelson DMD _____ (406) 752-8302
 Dr Stephen P Johnson DDS, Inc. PC _____ (406) 752-1166
 Dr Thomas Pittaway DMD, PC _____ (406) 755-7117
 Glacier Valley Endodontics _____ (406) 257-3647
 Thurston Orthodontics P.C. _____ (406) 752-3737

Dry Cleaning

Naturally Clean _____ (406) 862-8322
 Sutherland Dry Cleaners Inc. _____ (406) 755-6041

Educational Consulting

Project CRISS _____ (406) 758-6440

Electrical

American Electric, Inc. _____ (406) 756-9473
 Consolidated Electrical Distributors _____ (406) 755-6633
 Crescent Electric Supply _____ (406) 756-9686
 Fast and Friendly Electric _____ (406) 756-2030

Employment Agencies

Express Employment Professionals _____ (406) 257-2255
 Flathead Job Service Workforce Center _____ (406) 758-6200
 LC Staffing Service _____ (406) 752-0191

Engineering

Advanced Engineering and Environmental Services _____ (406) 250-5666
 Beaudette Consulting Engineers, Inc. _____ (406) 752-5675
 JE Engineering, Inc. _____ (406) 257-3013
 Morrison-Maierle Inc. _____ (406) 752-2216
 NextRnD _____ (406) 270-4505
 RLK Hydro Inc. _____ (406) 752-2025
 Robert Peccia & Associates _____ (406) 752-5025
 Stelling Engineers, Inc. _____ (406) 755-8602
 Waatti Engineering _____ (406) 755-7827

Engineering/Architects/Surveyors

Jackola Engineering & Architecture, PC _____ (406) 755-3208

Environmental

Applied Water Consulting, LLC _____ (406) 756-2550
 Montana Environmental Lab _____ (406) 755-2131

Environmental Consulting

Corwin Environmental Consultants Inc. _____ (406) 844-3312
 Snoops K-9 Detection Services _____ (877) 593-5911

Family Resource Center

Nurturing Center Inc. _____ (406) 756-1414

Farms/Equipment/Supplies

Big John's _____ (406) 257-7317
 CHS Inc - Kalispell _____ (406) 755-7400
 Murdoch's Ranch & Home Supply _____ (406) 755-4747

Farms/Equipment/Supplies/Individual Members

Harold Tutvedt _____ (406) 257-2465

Fire

Mahugh Fire & Safety LLC/
 Accurate Fire Systems _____ (406) 752-0163

Florist

Flowers By Hansen _____ (406) 752-1313

Fuel Distributors

1st Propane, Inc. _____ (406) 756-7678
 City Service Valcon _____ (406) 755-4321

Funeral Homes

Buffalo Hill Funeral Home _____ (406) 752-0336

Furniture

Al's Furniture Kalispell _____ (406) 756-1622
 Ciao Interiors _____ (406) 755-7373
 Piney Creek Interiors _____ (406) 862-7463

Garbage/Recycling

Evergreen Disposal _____ (406) 257-1739
 Pacific Steel & Recycling _____ (406) 755-7011

Garden/Nursery's

Hooper's Garden Center _____ (406) 752-2770
 Plant Land _____ (406) 756-7568

Gifts and Confections

Basket Business _____ (406) 756-3786

Government

City of Kalispell _____ (406) 758-7703

Dept of Natural Resource & Conservation _____ (406) 751-2240
 Flathead National Forest _____ (406) 758-5204

Granite/Marble/Stone

Clint Paulding Countertops, Inc. _____ (406) 752-9490

Health Care Services

Big Sky Family Medicine - KRMC _____ (406) 752-8433
 Eagleview West _____ (406) 212-0620
 Frontier Hospice _____ (406) 755-4923
 Golden Leaf Caregivers _____ (406) 755-3772
 Home Health - Home Options - KRMC _____ (406) 751-4200
 Occupational Health Svc - KRMC _____ (406) 751-4143
 Promethea Sales _____ (406) 257-9815
 The Helping Center Foundation of Kalispell _____ (406) 756-4325
 Wellness Resource Center _____ (406) 257-7572

Hearing

Moore Hearing _____ (406) 257-2273

Heating,Ventilation & Air Conditioning

Air Pro Duct Cleaning _____ (406) 752-0652
 Airworks, Inc. _____ (406) 257-1341
 Bill's Superheat _____ (406) 755-2220
 Central Heating & Cooling Inc. _____ (406) 756-6656

Home Health Care

A Plus Health Care _____ (406) 755-4968
 Addus Healthcare Inc. _____ (406) 257-1101
 Comfort Keepers _____ (406) 755-4030

Hospitals

Kalispell Regional Medical Center _____ (406) 752-1724
 North Valley Hospital _____ (406) 863-3500

Hospitals/Health Care Services

The HealthCenter _____ (406) 751-7500

Individual Members

Governor Stan Stephens _____ (406) 755-5090

Information Services

Merlin Information Services _____ (406) 755-8550

Insurance (Auto/Home/Health/Life)

AFLAC _____ (406) 755-5870
 Aspen Insurance _____ (406) 257-4864
 Best Insurance _____ (406) 755-8888
 Blue Cross Blue Shield of Montana _____ (406) 437-6401
 Bob Herron Insurance _____ (406) 756-8000
 Clear One Health Plans _____ (406) 751-2460
 Farm Bureau Financial Service _____ (406) 755-1115
 Farmers Insurance District Office _____ (406) 755-7009
 Farmers Insurance-Savage Agency _____ (406) 755-9595
 Flathead Farm Mutual Ins. Co. _____ (406) 752-7500
 Flathead Insurance _____ (406) 752-8000
 Glacier Insurance Strategies _____ (406) 257-7680
 Hub International _____ (406) 752-8693
 Insurance Coordinators of Montana, Inc. _____ (406) 758-4237
 Jane Lopp & Associates LLC _____ (406) 257-6886
 Matthew Downing State Farm _____ (406) 752-2116
 Montana Chamber Choices _____ (406) 442-2405
 Montana First Insurance Inc. _____ (406) 755-0719
 Mountain West Insurance
 & Financial Services, LLC _____ (406) 752-2265
 National Flood Services _____ (406) 756-8656
 New West Health Services _____ (406) 751-3333
 New York Life _____ (406) 871-6702
 Payne Financial Group _____ (406) 751-2360
 Sandra Goode State Farm _____ (406) 257-7714
 State Farm Insurance-Chad
 Miller _____ (406) 752-3515
 Tinseth & Associates _____ (406) 752-8576
 Torrent Technologies Inc. _____ (406) 257-7358
 Western States Insurance -
 Bigfork _____ (406) 837-7601
 Western States Insurance -
 Kalispell _____ (406) 758-4200

Interior Design

Carol Nelson Design Inc. _____ (406) 752-6175

Internet Providers

Montana Sky Networks Inc.

(406) 752-4335

Investment Services

American Financial Services, Inc. _____ (406) 756-6095
 Cornerstone Wealth Management _____ (406) 756-3787
 D A Davidson & Co. _____ (406) 752-6212
 Edward Jones Advisor _____ (406) 257-4953
 Investment Centers of America _____ (406) 752-7232
 Jill Wermeling of Wells Fargo _____ (406) 756-4055
 Merrill Lynch _____ (406) 755-6838
 Northwestern Mutual Financial Network _____ (406) 257-7406
 Prudential Financial _____ (406) 755-7530
 Raymond James Financial Services _____ (406) 756-7200
 Stifel Nicolaus _____ (406) 755-9400

Janitorial

A-1 Vacuum & Janitorial Supply _____ (406) 755-1871
 Flathead Janitorial & Rug Service _____ (406) 755-7075
 Grizzly Floor & Tile _____ (406) 260-4180
 Merry Maids _____ (406) 755-5414
 Rocky Mountain Super Vac _____ (406) 257-4639

Jewelers

Coins & Carats Inc. _____ (406) 752-2646

Landscape/Lawn Care

Dudley's Trees _____ (406) 756-2565
 JD's Sprinkler Systems _____ (406) 755-8230
 Lost Creek Hardscape and Irrigation _____ (406) 212-4803
 Riley Landscape Construction Inc. _____ (406) 892-5717
 Snowline Tree Company _____ (406) 752-1440
 Trugreen Chemlawn _____ (406) 257-2828

Landscape/Lawn Care/Pest Control

Turfmaster Lawn & Tree Care Inc. _____ (406) 755-4445

Lending Agencies

Mission Financial Group _____ (406) 752-7553

Lighting Services

Alpine Lighting Center _____ (406) 756-2639

Linen Supply/Uniform Supply/Dry Cleaning

High Country Linen Supply _____ (406) 755-2000

Locksmiths

A.T.L.A.S. Security Products _____ (406) 755-4920

Mailing Services/Business Services

Anderbeck, Inc. _____ (406) 844-3568

Manufacturing

Applied Materials - Semitool _____ (406) 752-2107
 Bio-Energy Systems, Inc. _____ (406) 257-9111
 Huckleberry Haven Inc. _____ (406) 756-5525
 Montana Gold Bullet Inc. _____ (406) 755-2717
 Sonju Industrial, Inc. _____ (406) 752-7979
 Timberline Tool _____ (406) 755-4258

Maps

Discovery Map International _____ (360) 547-1374

Medical Services

Advanced MedTech, Inc. _____ (406) 752-4003
 MedNorth Urgent Care _____ (406) 755-5661
 ResearchWest, Inc. _____ (406) 756-1460

Ten Signs of Needing Help

1. Stress of family members
2. Caregiver burnout
3. Coordination concerns
4. Incapacitated person, homebound/bedridden
5. Hospitalization-returning home questionable
6. Spouse has needs too
7. Chronic ailment or Progressive decline
8. Veteran with health care issues
9. Catastrophic Event or Illness
10. Worry over cost of long term care

Call: 406-212-0620

The Flathead Valley's
 only Certified Life
 Care Planner

Specializing in:
 Alzheimer's, Dementia,
 Long-Term Care
 Coordination & Planning,
 Geriatric Consulting



Owned & Operated by Local
 Registered Nurse
 Serving all of Northwest
 Montana & Surrounding Areas

Medical Supplies

Kalispell Medical Equipment (406) 752-6111

Mortgage & Lending Agencies

American Homestead Mortgage (406) 756-1505
Acceptance Capital Mortgage (406) 755-0512
Bank of America Home Loans (406) 270-1308
Budget Finance (406) 755-3483
First Interstate Bank Downtown Kalispell (406) 756-5200
Northwest Farm Credit Services (406) 755-3260
Wells Fargo Home Mortgage (406) 756-4090

Newspapers

Bigfork Eagle (406) 837-5131
Daily Inter Lake (406) 755-7000
Flathead Beacon (406) 257-9220
Hungry Horse News (406) 892-2151
Mountain Trader (406) 257-2251
Western News (406) 293-4124
Whitefish Pilot (406) 862-3505

Non-Profit

Big Brothers Big Sisters (406) 752-0092
Big Mountain Commercial Association (406) 253-9192
Easter Seals - Goodwill (406) 761-3680
Flathead Food Bank (406) 752-3663
Flathead Job Service Employer's Council (406) 758-7757
Flathead Youth Home (406) 755-4622
Glacier National Park Fund (406) 892-3250
Habitat for Humanity of Flathead Valley (406) 257-8800
Intermountain (406) 871-0137
Kalispell Business Improvement District
Nonprofit Development Partnership (406) 755-1135

Non-Profit/Financial Aid - Education

Student Assistance Foundation (406) 756-3382

Nursing Homes/Assisted Living

Expressions, Inc. (406) 253-4278
Prestige Assisted Living (406) 756-1818
The Springs at Whitefish (406) 862-6322

Nursing Homes/Assisted Living/Health Care Services

Brendan House (406) 751-6500

Nursing Homes/Assisted Living Senior Living/Retirement

Immanuel Lutheran Communities (406) 752-9622

Office Supplies/Equipment

J & H Office Supplies, Inc. (406) 755-8055
J2 Office Products (406) 752-8520
Mountain West Office Solutions (406) 212-1273
Office Max (406) 755-9588
Staples Advantage (888) 238-6329
West Coast Paper (406) 241-4822

Optical

Big Mountain Eye Care (406) 755-5171

Paint Contractors/Suppliers

Amazing Painting, Inc. (406) 756-0535
Columbia Paint & Coatings (406) 755-7816

Pawn Shops

First National Pawn (406) 755-4642

Pest Control

Complete Pest Services Inc. (406) 755-7399

Pet Services

Ashland Boarding Kennel (406) 755-6629
Humane Society of Northwest Montana (406) 752-7297
PBR Kennels (406) 257-4363

Pharmacy

Medical Arts Pharmacy (406) 752-2492

Physical Therapy

Orthopedic Rehab Inc. (406) 752-3597
Professional Therapy Associates (406) 756-7878

Physicians

Family Health Care (406) 752-8120
Flathead Valley Orthopedic (406) 752-7900
Glacier Eye Clinic (406) 752-8825
Grizzly Spine Pain & Rehab PC (406) 755-4488
R Dennis Winkel MD Family Practice (406) 752-8877
Roger G. Brown MD (406) 752-1404

Plumbing/Heating

Driscoll Plumbing & Heating, LLC (406) 755-3441
Northwest Pipe Fittings Inc. (406) 752-6562
Plumbing Incorporated (406) 890-2213
Roto-Rooter (406) 756-6820

Wild West Plumbing & Drain Service (406) 752-1244

Printers/Screen Printing

American Printing (406) 755-4993
Gold Rush Clothing (406) 752-5777
Insty Prints (406) 752-8812
Paper Chase Copy Center (406) 752-4944
Scott Company (406) 755-0099 /102

Private Investigators

Moonlyighting Detective Agency (406) 752-1007

Promotional Products

Bex Marketing/Carbonari (406) 755-8941
Rocky Mountain Images (406) 862-4035

Prosthetics/Orthopedics

Northern Care Inc Prosthetics & Orthotics (406) 755-6322

Publications

Flathead Living Magazine (406) 756-3348

Publications

Hagadone Directories Inc. (406) 257-9629
Spring Hill Press LLC (800) 627-8141

Radio/TV/Cable

Anderson Radio Broadcasting, Inc. (406) 883-9200
KAJ TV 8/18 (406) 756-5888
KCFW-TV (406) 755-5239
KOFI/KZMN Radio (406) 755-6690
Max Media of Montana ABC 23/59 (406) 251-1360

Real Estate

Buffalo Mountain Residential Community (406) 257-7969
Chuck Olson Real Estate Inc. (406) 752-1000
Dean & Leiningner of Kalispell (406) 752-8883
DS Properties (406) 253-8639
ERA Lambros Real Estate (406) 752-9200
Flathead Valley by Owner (406) 270-2845
Keller Williams Realty Northwest Montana (406) 752-4700
Montana Brokers Inc. Realtors (406) 758-4747
Montana Land and Home, Inc. (406) 270-7320
Montana Realty Management (406) 844-3932
Nalty Real Estate/Riverview Associates (406) 756-1030
Premiere Real Estate Professionals Inc. (406) 755-6789
Properties Northwest Real Estate (406) 755-7700
Re/Max Glacier Country (406) 257-8900
Susan E. Smith, RE/MAX of Whitefish (406) 863-3411
Trails West Real Estate (406) 837-7050
West Venture Properties (406) 751-5600

Real Estate - Appraisal/Home Inspection

Kelley Appraisal (406) 755-2015

Real Estate - Developers

93 and Church, LLC (406) 755-2240
Goldberg Properties, Inc. (303) 759-8000
Philip Harris & Associates Inc. (406) 756-2772
Silverbrook Estates (406) 257-2400

Real Estate - Property Management

All Pro Flathead Property Management (406) 755-1102
Corental Property Management Inc. (406) 752-5600
First & Main Building (406) 257-2361
Valley Maintenance (406) 837-6679
Whipps LLC (406) 752-7359

Real Estate Investors

Flathead Home Solutions, LLC (406) 755-2676

Restoration

Complete Restoration LLC (406) 752-MOLD (6653)

Schools

Club Z! In-home Tutoring of the Flathead Valley (406) 756-2223
Flathead FFA (406) 751-3951
Flathead Valley Community College (406) 756-3801
Glacier Institute (406) 755-1211
Junior Music Academy (406) 756-6922
Kalispell Montessori Schools (406) 755-3824
Kalispell Public Schools (406) 751-3434
Montana Academy Inc. (406) 755-3149
St Matthew's School (406) 752-6303

Stillwater Christian School (406) 752-4400
Summit Preparatory School (406) 758-8100
Trinity Lutheran School (406) 257-6716

Security

Alert Security (406) 756-1390
Grizzly Security Alarms, Inc. (406) 755-3698
Integrated Security Solutions Inc. (406) 755-2504
Interstate Alarm Company (406) 752-6624

Signs

Glacier Signs & Monuments (406) 257-6004
Signs Now (406) 257-9774
Peak Sign Solutions, Inc. (406) 755-7446

Storage

Windmill Storage/Business Park & U-Haul (406) 892-8900

Surveyors

TD&H Engineering (406) 751-5246

Tanning Salon

Club Sun (406) 755-8267

Title Companies

Alliance Title & Escrow Corp (406) 752-7606
Fidelity National Title (406) 755-7004
First American Title Company of Montana (406) 752-5388
Insured Titles (406) 755-5028
Sterling Title Services (406) 752-7000

Tool/Equipment Rentals

Midway Rental (406) 758-2022
Northwest Portables LLC (406) 752-0909

Trucking/Movers

Mergenthaler Transfer & Storage (406) 756-9700
Unishippers of Montana (406) 261-4224

Truss Manufacturing

Kalispell Truss Center (406) 755-2703

Utilities

Flathead Electric Cooperative (406) 751-4483
Northwestern Energy (406) 751-2211

Veterinarians

LaSalle Equine Clinic (406) 257-9399
The Animal Clinic of Kalispell (406) 755-6886

Water Conditioning

Advantage Water Conditioning (406) 755-4933
Culligan Water Conditioning (406) 257-6936

Web Development

Bigfork Web Development (406) 837-3334

Well Drilling

Chambers Drilling Company (406) 755-3480

Windows/Glass

Aluma Glass, Inc. (406) 755-5234
Glass Doctor (406) 257-6400
Pella Windows & Doors (406) 257-1516
Sierra Pacific Windows (406) 755-4710

Wood Products/Lumber

FH Stoltze Land & Lumber Co. (406) 892-7000
H E Simpson Lumber Co. (406) 752-4222
Plum Creek Timber Company (406) 892-6200



NORTHERN ENERGY

Montana's Propane Gas Headquarters

- On Time Routed Delivery Service
- Underground Tank Specialists
- Safety Certified Professionals
- Gas Appliances
- Sales & Service



www.northernenergy.com
24 Hour Emergency Service
(406) 257-3406 • 800-683-0809
1120 East Idaho • Kalispell



RON TERRY CONSTRUCTION, Inc.

(406) 755.7516

www.ronterryconstruction.com

Building homes throughout
Flathead Valley



*Your Local, Trusted Builder
of Affordable Homes*



One Shop!

*We offer complete
Heating, Cooling, Plumbing & Electrical
Services all under one roof.*

Now that's Convenient.

CHC CENTRAL
HEATING • COOLING • PLUMBING • ELECTRICAL

406-756-6656
www.centralmt.com



SALES • SERVICE • INSTALLATION

RESIDENTIAL • COMMERCIAL

BANKING CONVENIENCE AT YOUR CONVENIENCE.

**15 Full Service
Locations to
Serve You.**

Over 80 ATMs

*No service fees at any
of these locations.*

- Libby
- Kalispell (4 locations)
- Lakeside
- Eureka
- Whitefish (2 locations)
- Columbia Falls
- Bigfork
- Polson

- Anaconda
- Butte (2 locations)



Other Affiliate Banks to Transact Business:



WWW.GLACIERBANK.COM

MEMBER FDIC

BIG SKY WESTERN BANK

Big Sky
Bozeman

FIRST BANK OF MT

Lewistown
Chinook

FIRST SECURITY BANK

Missoula
Hamilton

Thompson Falls

Plains
Corvallis

VALLEY BANK OF HELENA

Helena
East Helena

WESTERN SECURITY BANK

Billings
Laurel

The beauty of Northwest
Montana may knock you
off your feet.

*We're here to
catch you.*

It's no surprise that Northwest Montana is home to some of the world's most exquisite landscapes. What may further impress you is the exceptional level of health care available right here, in this beautiful part of the country.

At Northwest Healthcare, we're more than just a local hospital. We're a family of services committed to improving the health, comfort, and lives of those we serve.

Discover Northwest Healthcare.
Visit us online at nwhc.org.

