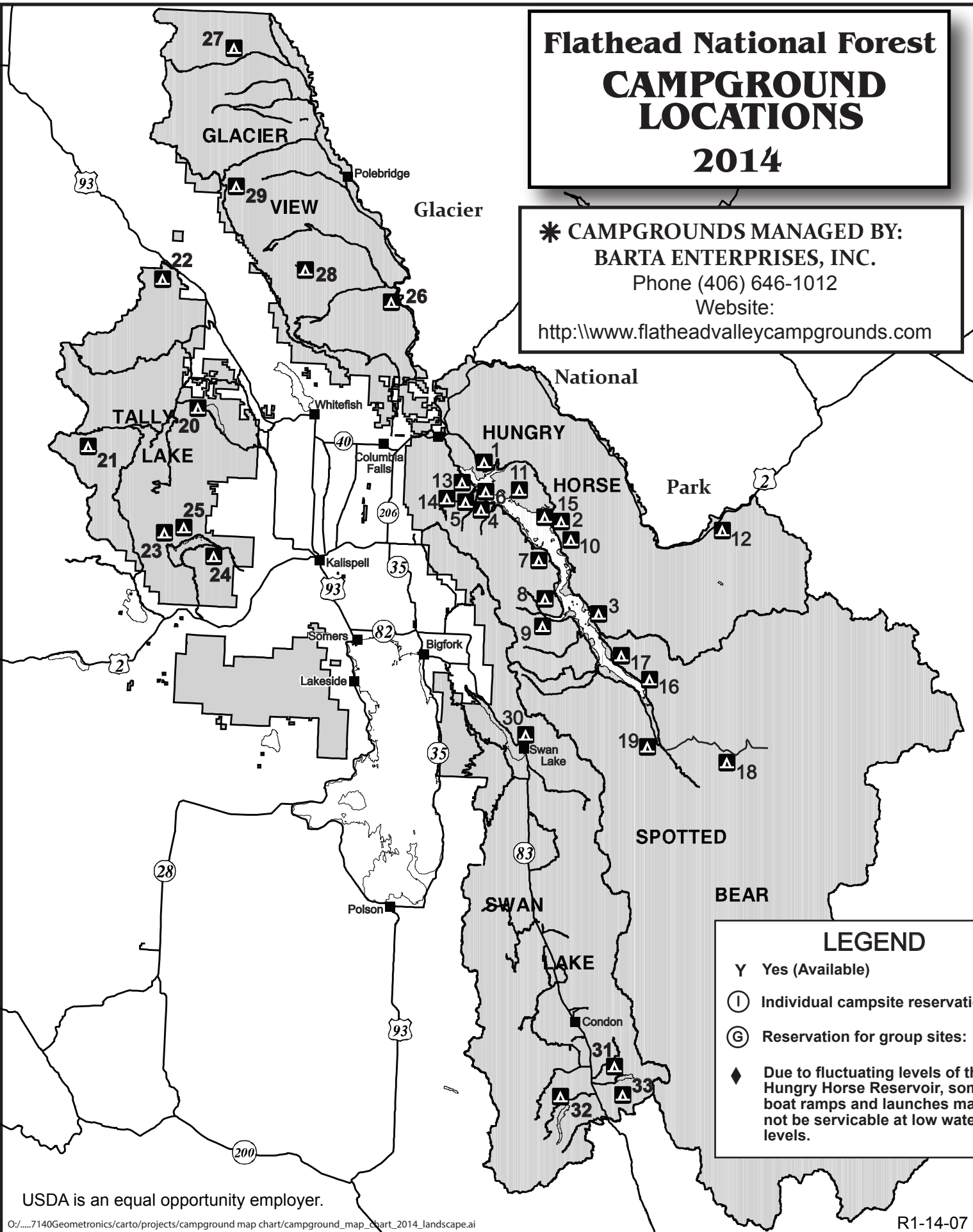


# Flathead National Forest CAMPGROUND LOCATIONS 2014

**\* CAMPGROUNDS MANAGED BY:**  
**BARTA ENTERPRISES, INC.**  
 Phone (406) 646-1012  
 Website:  
<http://www.flatheadvalleycampgrounds.com>



### LEGEND

- Y Yes (Available)
- (I) Individual campsite reservations:
- (G) Reservation for group sites:
- ◆ Due to fluctuating levels of the Hungry Horse Reservoir, some boat ramps and launches may not be servicable at low water levels.

USDA is an equal opportunity employer.

## 2014 CAMPGROUND INFORMATION

**Day Use Areas - \$5/day**  
**Season Pass - \$30**  
 Swan Lake, Tally Lake, Big Creek, Lost Johnny Point, Lost Johnny Camp, Emery Bay, and Doris Boat

**For Reservations:**  
[www.recreation.gov](http://www.recreation.gov)  
 1- 877- 444-6777

Map No.	Site	# Campsites	(H) - Host	Drinking Water Available	Toilet Type (Flush/Pit/Vault)	Boat Ramp Access	Draw Down Level	Fishing Access	Wheelchair Access	Maximum Trailer Length	Nearest Town	Fees/Info	Ranger District
* 1	(G) EMERY BAY (I)	26(H)	Y	V	Y	35 ft.	Y	Y	32'	Martin City 5 miles	\$14.00 Garbage Service	HUNGRY HORSE RD PO Box 190340 Hungry Horse, MT 59919 (406) 387-3800	
* 2	MURRAY BAY	20(H)	Y	V	Y	20 ft.	Y	32'	Martin City 22 miles	\$14.00 Garbage Service			
3	DEVIL'S CORKSCREW	4		V		43 ft.	Y	32'	Martin City 37 miles	Pack In/Pack Out			
* 4	LOST JOHNNY CAMP	5	Y	V		24 ft.	Y	50'	Hungry Horse 9 miles	\$13.00 Pack In/Pack Out			
* 5	LOST JOHNNY POINT (I)	21(H)	Y	V	Y	72 ft.	Y	40'	Hungry Horse 10 miles	\$14.00 Garbage Service			
* 6	LID CREEK (I)	23(H)		V			Y	32'	Hungry Horse 15 miles	\$12.00 Garbage Service			
7	LAKEVIEW	5		V				22'	Hungry Horse 24 miles	Pack In/Pack Out			
9	GRAVES CREEK	3		V				22'	Hungry Horse 35 miles	Pack In/Pack Out			
10	ELK ISLAND	7		P					Hungry Horse 16 miles	Pack In/Pack Out			
11	FIRE ISLAND	4		P					Hungry Horse 16 miles	Pack In/Pack Out			
* 12	DEVIL CREEK (I)	14(H)	Y	V				40'	Hungry Horse 44 miles	\$13.00 Garbage Service	SPOTTED BEAR RD PO Box 190340 Hungry Horse, MT 59919 (406) 756-5376		
* 13	DORIS BOAT	(H)		V	Y		Y	32'	Hungry Horse 6 miles	\$5.00 Pack In/Pack Out			
* 14	DORIS CAMP (I)	10		V			Y	32'	Hungry Horse 7 miles	\$11.00 Pack In/Pack Out			
* 15	RIVERSIDE	3		V	Ramp		Y	50'	Hungry Horse 20 miles	\$12.00/\$24.00 Pack In/Pack Out			
16	CROSSOVER	5		V	Y		Y		Martin City 42 miles	Pack In/Pack Out			
17	PETER'S CREEK	6		V			Y	30'	Martin City 37 miles	Pack In/Pack Out			
18	BEAVER CREEK	6		V			Y	32'	Martin City 66 miles	Pack In/Pack Out			
19	SPOTTED BEAR	13	Y	V			Y	32'	Martin City 55 miles	\$10.00 Garbage Service			
* 20	(G) TALLY LAKE (I)	40(H)	Y	V	Y		Y	40'	Whitefish 12 miles	\$15.00 Garbage Service			
21	SYLVIA LAKE	3		V	Small Boat		Y	20'	Kalispell 33 miles	Pack In/Pack Out		TALLY LAKE RD 650 Wolfpack Way Kalispell, MT 59901 (406) 758-5204	
22	STILLWATER LAKE	5 (H)		V	Y		Y	25'	Whitefish 21 miles	Pack In/Pack Out			
23	ASHLEY LAKE NORTH	5(H)		V	Small Boat		Y	25'	Kalispell 17 miles	Pack In/Pack Out			
24	ASHLEY LAKE SOUTH	2		V	Canoe walk'down		Y	0'	Kalispell 12 miles	Pack In/Pack Out			
25	ASHLEY LAKE BOAT	4		V	Y		Y	12'	Kalispell 16 miles	Pack In/Pack Out			
* 26	(G) BIG CREEK (I)	22(H)	Y	V			Y	40'	Columbia Falls 20 miles	\$14.00 Garbage Service	GLACIER VIEW RD PO Box 190340 Hungry Horse, MT 59919 (406) 387-3800		
27	TUCHUCK	7		V			Y	22'	Columbia Falls 60 miles	Pack In/Pack Out			
28	MOOSE LAKE	3		V			Y		Columbia Falls 36 miles	Pack In/Pack Out			
29	RED MEADOW LAKE	6		V			Y	32'	Columbia Falls 49 miles	Pack In/Pack Out			
* 30	(G) SWAN LAKE (I)	36(H)	Y	V	Y		Y	50'	Bigfork 14 miles	\$15.00 Garbage Service	SWAN LAKE RD 200 Ranger Station Rd Bigfork, MT 59911 (406) 837-7500		
* 31	(G) HOLLAND LAKE (I)	40(H)	Y	V	Y		Y	50'	Seeley Lake 17 miles	\$15.00 Garbage Service			
32	LINDBERGH LAKE	11		V	Y		Y	20'	Seeley Lake 17 miles	Pack In/Pack Out			
33	OWL CREEK PACKER CAMP	10	Y	V	Cabin Rental		Y		Seeley Lake 17 miles	Pack In/Pack Out			

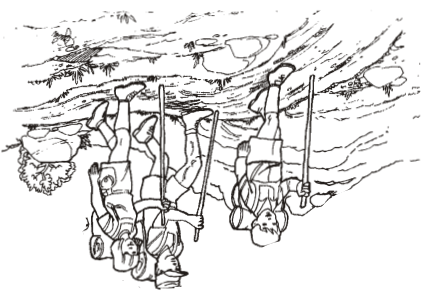


developed recreation sites. pets leashed at all times while in them. Secure all food and trash. Keep approaching, feeding, or following all wildlife from a distance without Wild animals can be dangerous. Watch

**Respect Wildlife -**

enjoy. what you find in place for others to to always keep the water clean. Leave sources if none is available. Remember or keep 100 feet away from all water available. Use bathrooms when provided Deposit your refuse in receptacles provided or pack it out if none is

**Trash Your Trash -**



To protect nature and your surroundings use existing camp sites and trails.

**Choose the Right Path -**

**Tread Lightly!  
ON PUBLIC AND PRIVATE LAND**



Travel only where motorized vehicles are permitted. Stay on roads and trails. Motorized wheeled cross-country travel is not allowed on Forest Service Lands.

Respect the rights of hikers, horseback riders, skiers, campers and others so they can enjoy their activities undisturbed.

Educate yourself. Obtain Visitor Maps and regulations from public agencies, comply with signs and barriers, and ask owner's permission to cross private property.

Avoid streams, lake shores, meadows, muddy roads and trails, steep hillsides, wildlife, and livestock.

Drive responsibly to protect the environment and preserve opportunities to enjoy your vehicle on wildlands.



are not bear resistant. Coolers, plastic storage boxes and tents camper or bear resistant containers. inside your vehicle trunk or cab, hard-sided Keep all food and food related items be stored in a bear resistant manner. length of time, attractants and food must If campsite is left unattended for any **Keep Food Away From Bears-**



not allowed in National Forests. fire unattended. Setting off fireworks is extinguish fires completely. Never leave a the ground. Burn wood completely and loose sticks and dead downed wood from branches from live trees. Instead, collect rings within developed sites. Do not break Obey fire restrictions and use existing fire **Be Careful With Fire-**



Forest System Lands. a 14 day maximum stay on National before using the site or facility. There is before drinking. Pay all fees required stream, boil or chemically treat it water. If you use water from a lake or all campgrounds. Bring your own Drinking water is not always available at out about the area you will be visiting. Use maps and other references to find Plan ahead and prepare for your trip. **Know Before You Go -**

unattended. It attracts wild animals. leashed and do not leave pet food forest environment. Keep your pets protect you, other visitors, and the developed area. They are there to the bulletin boards when using a familiar with the regulations posted on Keep all radios turned down. Become **Respect Other Visitors -**

areas clean. to keep the campground and picnic you enjoy your visit and ask your help Flathead National Forest. We hope **Welcome to the**

**Information**



**Hungry Horse/Glacier View Ranger District**  
10 Hungry Horse Drive  
Hungry Horse, MT 59919  
(406) 387-3800

**Spotted Bear Ranger District**  
10 Hungry Horse Drive  
P.O. Box 190340  
Hungry Horse, MT 59919  
Summer- (406) 758-5376

**Swan Lake Ranger District**  
200 Ranger Station Road  
Bigfork, MT 59911  
(406) 837-7500

**Tally Lake Ranger District**  
650 Wolfpack Way  
Kalispell, MT 59901  
(406) 758-5204

**Flathead NF- Supervisor's Office**  
650 Wolfpack Way  
Kalispell, MT 59901  
(406) 758-5208

Web address: [www.fs.fed.us/r1/flathead/](http://www.fs.fed.us/r1/flathead/)

**2014  
CAMPGROUND**



**DIRECTORY**

**Flathead  
National Forest**

