

THE MONTANA DINOSAUR TRAIL



EXHIBITS ★ Unique paleontology displays, interpretation, replicas or actual skeletons of dinosaurs and other fossils found in Montana.

PROGRAMS 📺 Facility provides public/visitor education programs and/or guided tours of paleontology displays associated with the facility. Regularly scheduled or upon request.

FIELD DIGS 🛠️ Facility operates or is formally affiliated with organization(s) conducting paleontology field digs open to the public. Strict adherence to the Society of Vertebrate Paleontology Code of Ethics is required.

Black icon indicates activity available at each location.

Blaine County Museum
Chinook ★
The Paleontology Department displays a dozen Judith River Formation exhibits including hadrosaur, *Gorgosaurus* and *Ankylosaurus* fossils from the area. Remains of gigantic marine reptiles mosasaur and plesiosaur are featured, along with invertebrates from the area's ancient ocean (75-500 million years ago). In the Look, Touch, and Wonder room guests can handle fossils of sea creatures, plants, and dinosaurs that roamed this area millions of years ago. Free. Open all year. Hours of operation available at www.blainecountymuseum.com, 406-357-2590. Located 4 blocks off US Hwy 2, 501 Indiana Street.

Carter County Museum
Ekalaka ★
This is Montana's first county museum and the first to display dinosaurs found in the state. Its exhibits include a mounted skeleton of *Anatotitan copei* (one of a few nearly complete skeletons of this species found) a complete skull of *Triceratops*, and a full cast of Wyrex the *T. rex*. Carter County has produced pachycephalosaurs, mosasaurs, plesiosaurs, ankylosaurs, the first and most complete juvenile *T. rex*, and the only known pterosaur from the Hell Creek Formation. Mounts and casts of all of these are on display along with other real dinosaur bones. Free. Open all year. Hours of operation available at <http://cartercountymuseum.org>, 406-775-6886. Located at 306 N. Main.

Depot Museum
Rudyard ★
The Rudyard area has provided dinosaur specimens for the Museum of the Rockies (MOR) and other premier institutions for years. Now an MOR affiliate, the Depot Museum's signature display is the "Oldest Sorehead," a fully articulated *Gryposaurus* found near here. The facility's lifelike duckbill dinosaur and egg nest display places you right next to these ancient creatures, plus other permanent and changing dinosaur exhibits. Open Memorial Day to Labor Day and winter by appointment. Hours of operation available at <http://rudyardmuseum.com>, 406-355-4322 or 4356. Located off US Hwy 2, 4th Avenue NW.

Fort Peck Interpretive Center and Museum
Fort Peck ★ □
The Center's signature attraction is "Peck's Rex™," one of the most complete *Tyrannosaurus rex* skeletons ever found. The lobby features a life-size replica of Peck's Rex, and the exhibit hall displays a full-size skeleton cast. A Cretaceous Sea display and several other dinosaur exhibits are also highlighted. Free. Open daily May-Sept. Seasonal hours Oct-Apr. Hours of operation available at http://www.fws.gov/refuge/Charles_M_Russell/visit/visitor_activities/FPIC.html, 406-526-3493. Located 1.5 miles east of Fort Peck townsite, Lower Yellowstone Rd.

Garfield County Museum
Jordan ★
The museum features Cretaceous fossils from the Hell Creek Formation. The first *T. rex* ever discovered was found near Jordan in 1902! Exhibits include a full *T. rex* skull, full-size *Triceratops* replica, and a pachycephalosaur domed skull. Free. Open June 1-August 31. Hours of operation available online at www.garfieldcounty.com/our-museum.html. Located on US Hwy 200 East.

Great Plains Dinosaur Museum and Field Station
Malta ★ □ 🛠️
Located in the heart of "dinosaur country," the museum features many extraordinary fossils: fish, invertebrates, turtles, plants, crocodile and a variety of Jurassic and Cretaceous dinosaur species, such as *Camarasaurus*, *Stegosaurus*, *Triceratops*, pachycephalosaurs, tyrannosaurs, a new species of horned dinosaur and "raptor", and superbly preserved juvenile and adult specimens of *Brachylophosaurus*. Summer field dig programs are offered for adults and children. Collections room, fossil preparation lab, and gift store. Seasonal hours of operation, admission fee available at www.greatplainsdinosaurs.org, 406-654-5300 or dinosaur@itriangle.com. Located on Hwy 2 East next to the Phillips County Museum.

H. Earl Clack Memorial Museum
Havre ★
The museum displays 75 million year old dinosaur eggs and embryos found in local exposures of the Judith River Formation. Research suggests these are *Lambeosaurus* eggs (a "duck bill" dinosaur) laid along the banks of an ancient river and estuary of the Cretaceous Bearpaw Sea that once covered this area. "Stygi," a skull cast of the rare *Stygimoloch* (a species of pachycephalosaur) and an *Albertosaurus* head mask are also displayed. The famed archeological treasure—the Wahkpa Chu'gn Buffalo Jump Site—is adjacent to the museum. Free. Seasonal hours of operation available at www.hearclackmuseum.org, 406-265-4000. Located on US Hwy 2 West in the Holiday Village Mall.

Frontier Gateway Museum
Glendive ★ □
An official county museum located in the heart of the Hell Creek Formation rich with Cretaceous fossil remains. Full size replicas of *Stegoceras* found in the Glendive area are on display along with fossils from *Triceratops*, *Hadrosaurus*, *Thescelosaurus*, aquatic, and plant fossils. Open Daily Memorial Day-Labor Day. Guided tour available upon request. Free. Hours of operation available at www.frontiergatewaymuseum.org, 406-377-8168 or frontiermuseum@ymail.com. Located at 201 State Street (Take exit 215 off I-94, then Belle Prairie Frontage Rd).

Makoshika State Park
Glendive ★ □
Makoshika (meaning "bad land" in Lakota) is part of the Late Cretaceous Hell Creek Formation. More than ten different dinosaur species have been discovered in Makoshika. Significant finds include a complete *Triceratops horridus* skull (on display at the Park's Visitor Center), fossil remains of *Edmontosaurus* and *Tyrannosaurus rex* and a nearly complete skeleton of the rare thescelosaur. Open year-round; camping sites available. Hours of operation, Park fee available at <http://stateparks.mt.gov/makoshika/>, 406-377-6256. Located 1.4 miles southeast of downtown on Snyder Ave., follow State Park/Dinosaur Track signs.

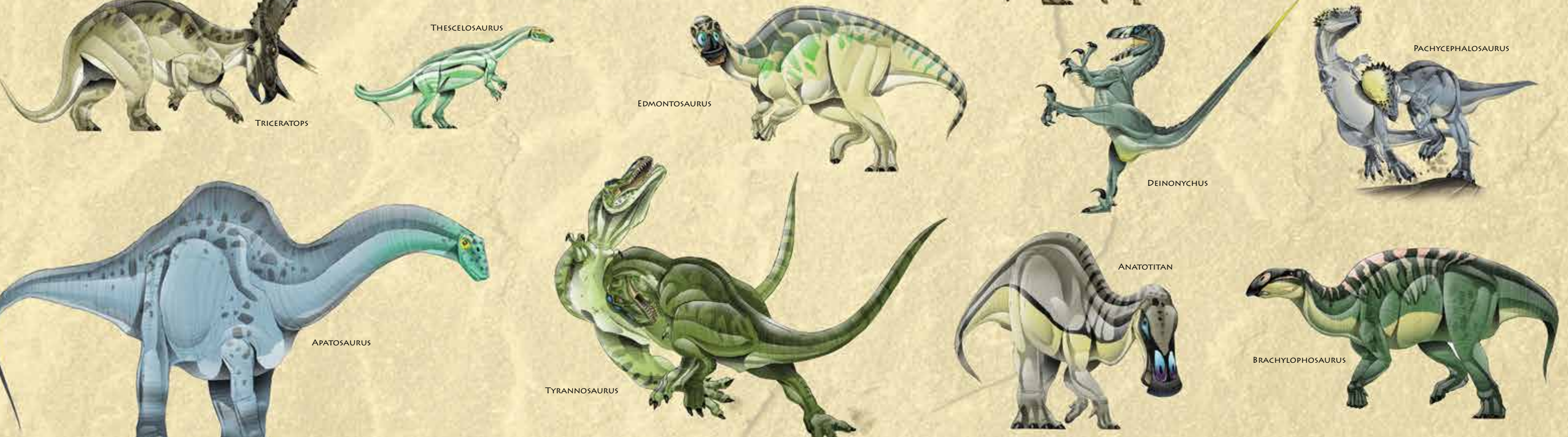
Museum of the Rockies
Bozeman ★ □
Museum of the Rockies is a Smithsonian Affiliate and recognized as one of the world's finest research and history museums. MOR houses the most *T. rex* specimens anywhere in the world. Notable exhibits include the growth and behavior series of *Triceratops* and *Tyrannosaurus rex*, the Montana's *T. rex* skeleton, the Catherine B. rex specimen, and many other one-of-a-kind dinosaur finds. MOR also delights visitors with changing exhibits from around the world, permanent indoor and outdoor regional history exhibits, planetarium shows, and a museum store. Open all year, hours of operation and admission fee available at www.museumoftherockies.org, 406-994-2551. Located at 600 W. Kagy Blvd.

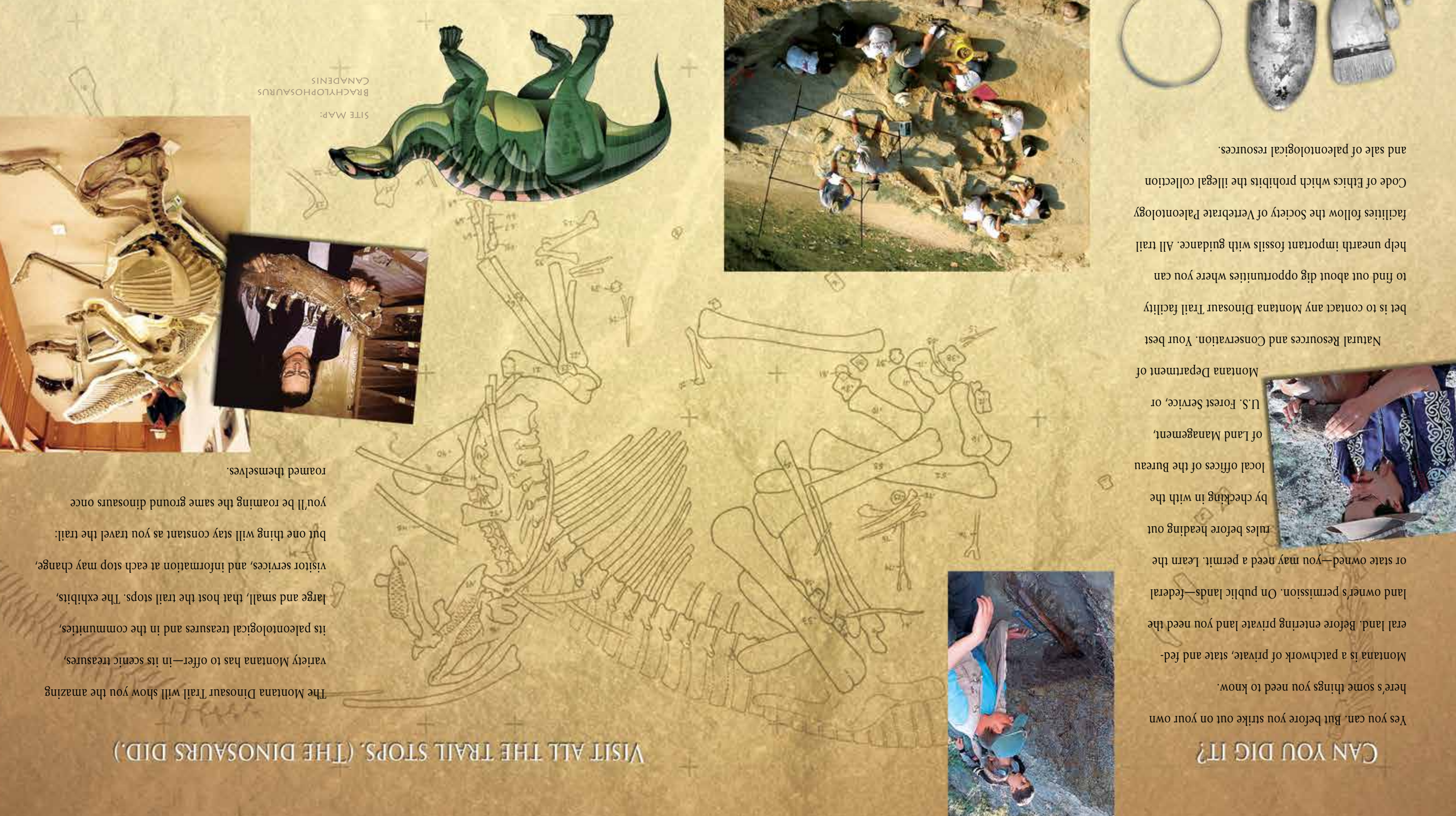
Old Trail Museum
Choteau ★
The Dinosaur Antechamber showcases discoveries from the Two Medicine Formation: *Maiasaura* and *Einosaurus* skulls, nestling, hatchling and adult *Maiasaura* skeletons and bones, and a *Sauronitholestes* skeleton casting. A prep lab display and geologic information about the Rocky Mountain Front and Willow Creek Anticline provide additional information about the area and its rich paleontology heritage. Seasonal hours of operation, admission fee available at www.oldtrailmuseum.org, oldtrail2@gmail.com, 406-466-5332. Located on US Hwy 89, 823 N. Main St.

Phillips County Museum
Malta ★
Fossil discoveries from the nearby Judith River Formation are featured inside the museum. Meet "Elvis" the 33-foot long *Brachylophosaurus* fossil, one of the best articulated skeletons ever found. A dynamically posed 28' *Albertosaurus* stands tall greeting visitors. Other significant items are a 700-pound *Apatosaurus* femur visitors can pose with and a Skull Game for children. In the underwater sea area a fantastic 4' by 4' Crinoid plate is displayed - is it plant or animal? Season, hours of operation and admission fees are available at www.phillipscountymuseum.org, pcm@itriangle.com, or 406.654.1037. Located at 431 US Hwy 2 East next to the Great Plains Dinosaur Museum.

Two Medicine Dinosaur Center
Bynum ★ □ 🛠️
Education through Research is our motto! In addition to our museum - which features local discoveries like the first baby dinosaurs found in North America - we also offer public, hands-on dinosaur dig programs throughout the summer. These programs run from a half-day site tour all the way to our two-week long Paleo Training Course. Advanced registration required. Season and hours of operation available at www.tmdinosaurcenter.org, info@tmdinosaur.org, 1-800-238-6873. Downtown Bynum, US Hwy 89, look for the dinosaurs!

Upper Musselshell Museum
Harlowton ★
The museum's centerpiece is "Ava," the full-size skeleton replica of a "first of its kind" *Avaceratops*, found in the Judith River Formation outside nearby Shawmut. The museum also has a hadrosaur tibia and fibula, numerous dinosaur leg bone and hip bone fossils, and fossilized ancient sea creatures. Open Memorial Day-Labor Day. Hours of operation available at www.harlowtonmuseum.org, museum@mtintouch.net, 406-632-5519. Two locations downtown: 11 & 36 South Central Ave.





VISIT ALL THE TRAIL STOPS. (THE DINOSAURS DID.)

The Montana Dinosaur Trail will show you the amazing variety Montana has to offer—in its scenic treasures, its paleontological treasures and in the communities, large and small, that host the trail stops. The exhibits, visitor services, and information at each stop may change, but one thing will stay constant as you travel the trail: you'll be roaming the same ground dinosaurs once roamed themselves.

Yes you can. But before you strike out on your own here's some things you need to know. Montana is a patchwork of private, state and federal land. Before entering private land you need the land owner's permission. On public lands—federal or state owned—you may need a permit. Learn the rules before heading out by checking in with the local offices of the Bureau of Land Management, U.S. Forest Service, or Montana Department of Natural Resources and Conservation. Your best bet is to contact any Montana Dinosaur Trail facility to find out about dig opportunities where you can help unearth important fossils with guidance. All trail facilities follow the Society of Vertebrate Paleontology Code of Ethics which prohibits the illegal collection and sale of paleontological resources.

A STEP-BY-STEP GUIDE

THE MONTANA DINOSAUR TRAIL



Today, Montana is filled with uncrowded spaces. But that wasn't necessarily the case when dinosaurs ruled the earth. In fact, Montana has yielded some of the world's most significant dinosaur discoveries. For instance, the *Maiasaura* nests found at Egg Mountain near Choteau have been hailed as one of the most important discoveries ever for dinosaur biology: *Maiasaura*, or mother lizard, is Montana's official state fossil. The first *Tyrannosaurus rex* fossil—as well as the largest *Tyrannosaurus rex* ever unearthed—were found in Montana. And "Leonardo" the mummy dinosaur (a *Brachylophosaurus*), named by the Guinness Book of World Records as the "world's best preserved dinosaur," has its home in Malta, Montana.

YOU KNOW WHERE. NOW HERE'S WHY. Landscape and access—two keys to Montana's "Paleo Treasures." Montana is, of course, known for its stunning variety of landscapes, ranging from the rugged peaks of the Rocky Mountains to the sweeping eastern plains. The folding and shifting that produced these varied

landscapes also exposed rock formations from nearly every geologic era—including the Cretaceous and Jurassic periods, when dinosaurs lived. In other words, the rock formations filled with dinosaur fossils are "at the surface," often exposed in dry, rocky, "badland" environments. That means very little vegetation and topsoil cover the fossils, so erosion has helped paleontologists (or, in most cases, farmers, ranchers, hikers, and the like) discover them. Finally, because Montana is sparsely populated, sites haven't been disturbed or covered by heavy development. Put it all together, and you have the ideal conditions for discovery!



DISCOVERY IN COMFORT While the dinosaurs had to fend for themselves, each of the Montana Dinosaur Trail stops can help you discover their community's lodging, restaurants, entertainment, and recreation services—amenities to add comfort to your adventure.

THE MONTANA DINOSAUR TRAIL

The Montana Dinosaur Trail project funding partners include all trail facilities listed inside, along with the organizations and agencies listed below:

- VISIT SOUTHEAST MONTANA
www.southeastmontana.com
- MISSOURI RIVER COUNTRY
www.missouririver.visitmt.com
- CENTRAL MONTANA
www.centralmontana.com
- Yellowstone Country MONTANA
www.visityellowstonecountry.com
- MONTANA STATE PARKS
www.stateparks.mt.gov
- U.S. DEPARTMENT OF THE INTERIOR
BUREAU OF LAND MANAGEMENT
www.blm.gov/montana-dakotas
- US Army Corps of Engineers - Fort Peck Project
http://www.fws.gov/refuge/Charles_M_Russell/visit/visitor_activities/FPIC.html
- MONTANA
www.visitmt.com
- MONTANA
www.commerce.mt.gov



The Montana Dinosaur Trail Prehistoric Passport is your guide back in time - millions of years back - as you explore the Montana Dinosaur Trail. Passports available at each trail facility or online at www.mtdinotrail.org.

Get yours today!

Produced with Accommodations Tax Funds. Printed in USA for free distribution. Alternative accessible formats of this document will be provided upon request. Copyright 2017 Montana Office of Tourism and Business Development.

Printed on recycled paper

Cover photo courtesy of Craig & Liz Larcom.

THE MONTANA DINOSAUR TRAIL



150 MILLION YEARS IN THE MAKING

