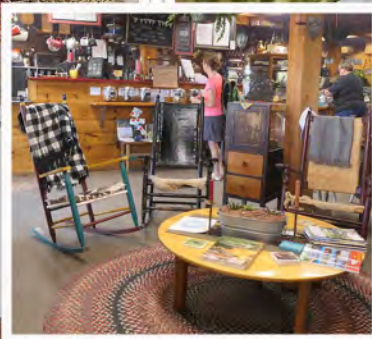




# FRESHLY PICKED and PREPARED



Minutes from Downtown Lewiston/Auburn, **Nezinscot Farm** captures the essence of self-sufficient rural life. The market offers fresh produce and baked goods and also an excellent breakfast and lunch menu featuring many of the ingredients harvested within sight of the front door. There are also workshops for those who like a more hands-on experience like cheese making, knitting or weaving.



The entire second floor is dedicated to fiber arts.



Less than five miles from Turner Village, **Ricker Hill Orchards** brings more to the table than apple pie. The Tasting Room is a comfortable setting to sample a flight of various hard ciders crafted on site and fruity wines made with ingredients harvested on the farm. Take home a flagon of your favorite to pare with goodies found at the farm stand or harvested by you at the Pick-Your-Own orchard, when the apples are in season.

# APPLES SERVED by the PINT

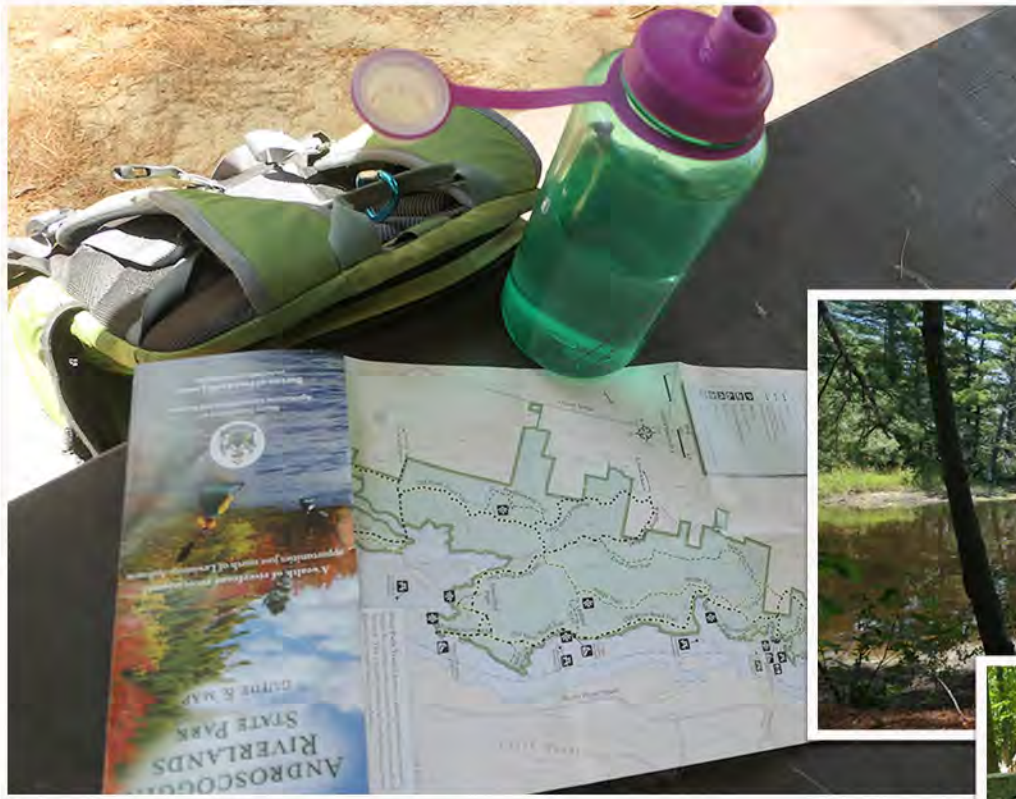


Ricker Hill Farmstand a short walk from the Tasting Room.

Maine's  
**LAKES and MOUNTAINS**

Stretching nine miles along the river, the **Androscoggin Riverlands State Park** trails wander through both human and geological history. The trail network provides easy walking, challenging mountain biking and extensive multi-use/ATV experiences.

# BOULDERS & BOUNDARIES



Hike the **Homestead Trail** and meander through abandoned farmlands, scattered with ruins of old barn foundations and forgotten stonewalls built in the 1800's. The three-hour hike will take you by secluded picnic sites, up the **Ridge Trail** to the **Ledge's** stone stairway, and back along the **Old River Road** multi-use trail.



The landscape is speckled with huge glacial-erratic boulders dropped by the last ice age.