

Please complete the following information to take advantage of exclusive subscriber privileges.

Name _____

Address _____

City _____ State _____ Zip _____

Phone _____

Email _____

*** Holiday Production ***

Elf the Musical

Performance Date _____

of Adult Tickets \$34 x _____ = _____


of Adult Preview Tickets \$31 x _____ = _____

Student Tickets \$20 x _____ = _____

Total Holiday Tickets \$ _____

Subscription Total (from reverse) \$ _____

Senior Discount (65+) if applicable \$ _____

Donation  \$ _____

Ticket sales cover only part of the costs of producing our shows. Please donate generously to make our work possible. (Penobscot Theatre Company is a 501 (c) 3; donations are tax-deductible.)

☐ Check here if your employer matches contributions

Handling Fee (required) \$ 5.00

Total Due \$ _____

Payment by Credit Card: AMEX VISA MC Discover

Card # _____

Cardholder Name _____

Exp. Date _____ CVV _____

Signature _____

Make check payable to Penobscot Theatre Company

Show schedules, prices, dates, and titles are subject to change.

Penobscot Theatre Company is a 501(c)(3) nonprofit organization.

Please mail this form and payment to:
Penobscot Theatre Company-Subscriptions
131 Main Street, Bangor, ME 04401
www.penobscottheatre.org

Nonprofit
Organization
U.S. Postage
PAID
Bangor, ME
Permit No. 55

Penobscot Theatre Company
131 Main Street, Bangor, ME 04401

PENOBSCOT THEATRE COMPANY

2018-2019 SEASON



THE GRADUATE
WAIT UNTIL DARK
ELF THE MUSICAL
HONKY TONK LAUNDRY
RIPCORN
FUN HOME
SURPRISE 7TH SHOW



Premier Package 5 Plays
I want to experience the full season!
 Enjoy all five regular productions
 in the 2018- 2019 Season in your favorite seats!

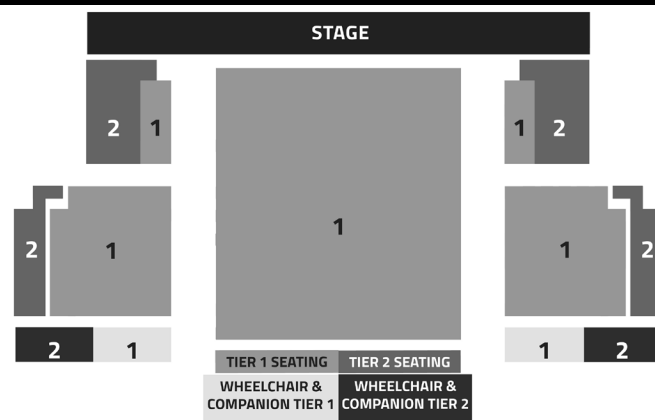
Snowbird Package 3 Plays
I fly away for the winter!
 Enjoy three productions
 in the fall and the spring, when you are near!

FlexPass Subscription
I want ultimate flexibility!
 Use ticket packs for any production, excluding
 special productions, in any combination
 (one at a time, in pairs, all at once) to suit your plans!
 FlexPass Subscription 4, 5 or 6 vouchers

DayPass Subscription
I want the best value!
 Regular and Student
 See as many performances of season productions, excluding
 holiday and special productions, as many times as you wish,
 space permitting. Call within 24 hours of the performance
 to reserve the best available seats!
 All DayPass subscriptions are non-transferable.

Annual Fund

Include a gift with your subscription to help create great works,
 maintain our historic home, and support our educational programs.



Subscription Order Form

Performances	Premier Package		Sub Total
	Tier 1	Tier 2	
Preview Thu 7pm	_____ \$120	_____ \$120	
Preview Fri 7pm	_____ \$120	_____ \$120	
Opening Sat 5pm	_____ \$170*	_____ \$140	
Talkback Sun 3pm	_____ \$170*	_____ \$140	
2nd Week Wed 7pm	_____ \$130	_____ \$130	
2nd Thu 7pm	_____ \$130	_____ \$130	
2nd Fri 8pm	_____ \$170*	_____ \$140	
2nd Sat 3pm	_____ \$170*	_____ \$140	
2nd Sat 8pm	_____ \$170*	_____ \$140	
2nd Sun 3pm	_____ \$170*	_____ \$140	

* \$20 senior discount applies

Performances	Snowbird Package		Sub Total
	Early Bird Shows 1, 4 & 5	Late Bird Shows 1, 2 & 5	
Preview Thu 7pm	_____ \$75	_____ \$75	
Preview Fri 7pm	_____ \$75	_____ \$75	
Opening Sat 5pm	_____ \$105	_____ \$105	
Talkback Sun 3pm	_____ \$105	_____ \$105	
2nd Week Wed 7pm	_____ \$80	_____ \$80	
2nd Thu 7pm	_____ \$80	_____ \$80	
2nd Fri 8pm	_____ \$105	_____ \$105	
2nd Sat 3pm	_____ \$105	_____ \$105	
2nd Sat 8pm	_____ \$105	_____ \$105	
2nd Sun 3pm	_____ \$105	_____ \$105	

FlexPass	DayPass	Sub Total
4 Ticket FlexPass _____ \$132	Standard DayPass _____ \$115	
5 Ticket FlexPass _____ \$165	Student DayPass _____ \$65	
6 Ticket FlexPass _____ \$198		
TOTAL:		

My seating preference is:

Questions? Call Box Office at 207-942-3333

Greetings!

Thank you for perusing this old-fashioned brochure. The information is available on our website, too, but you may enjoy the tactile pleasure of physically turning the pages, and if visual reminders are useful, hanging your phone on your refrigerator will not work nearly as well as the paper in your hands. Did you know that 95% of Americans now own a cellphone of some kind, which is great! And awful.

I appreciate the convenience cell phones offer, but I am tired of these devices – and not just when they erupt during performances. I am weary of the seemingly incessant beeps and buzzes and wary of the false sense of connection they engender. Are we more connected because we *can* connect any time any place?

Before cell phones and even before the printing press, theatre connected people. Penobscot Theatre Company exists today for the same essential purpose. Through our craft we explore the human condition, finding areas of commonality and eliciting from our audience a collective response – a laugh, a gasp, a ripple of tapping toes, applause. And that's the sound of connection.

Experience our 45th Season and connect (or reconnect) with our very special community, distant worlds and new ideas, and maybe yourself.

See you at the theatre!

Bari Newport
Producing Artistic Director

Beyond the mainstage

Penobscot Theatre Company is not only training the next generation of theatre talent in Northern Maine, we're growing humans here! Through our signature Dramatic Academy, we offer an array of educational programs for all ages, led by experienced industry professionals and designed to build broadly applicable skills. Check out our classes and learn more about our youth performances at www.penobscottheatre.org/education; or call (207) 947-6618 ext.107.

A movie poster for 'The Graduate' featuring a large black silhouette of a person in a graduation cap and gown, with one leg raised in a high-heeled shoe. A much smaller silhouette of a person stands in the bottom right corner. The background is a solid magenta color.

THE GRADUATE

ADAPTED BY **TERRY JOHNSON**
BASED ON THE NOVEL BY **CHARLES WEBB**
AND THE SCREENPLAY BY **BUCK HENRY & CHARLES WILLINGHAM**

THE GRADUATE

adapted by Terry Johnson, based on the novel by Charles Webb and the screenplay by Calder Willingham and Buck Henry

September 6-23, 2018

Benjamin has excellent grades, very proud parents and, since he helped Mrs. Robinson with her zipper, a fine future behind him. A cult novel and classic film, *The Graduate* translates beautifully to the stage, capturing the pain, passion and possibility of a young man on the cusp of...anything but plastics. A MAINE PREMIERE!

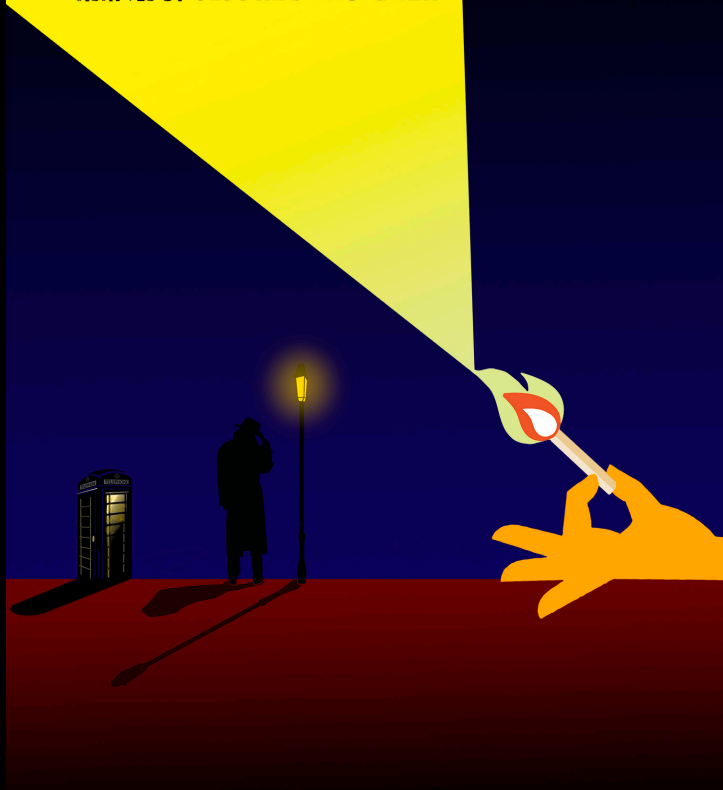
"Sexy and sardonic...a boozy cocktail of comic drama punctuated with nail-biting awkwardness."

Entertainment Focus

WAIT UNTIL DARK

BY **FREDERICK KNOTT**

ADAPTED BY **JEFFREY HATCHER**



WAIT UNTIL DARK

by Frederick Knott, adapted by Jeffrey Hatcher

October 18 – November 4, 2018

In this new adaption of the 1966 thriller, a sinister con man and two ex-convicts meet their match when they trace a valuable doll to the apartment of Sam Hendrix and his blind wife, Susan. Through a cleverly constructed deception, they nearly fool Susan, but she unveils the ruse and a deadly game of cat and mouse ensues. Susan knows the only way to play fair is by her rules, so she waits until darkness falls to bring the game to a breath-stopping conclusion.

"...a first rate shocker..."

New York Post



The Musical

Lyrics by
Chad Beguelin

Book by
Thomas Meehan and Bob Martin

Music by
Matthew Sklar

Based upon the New Line Cinema film written by David Berenbaum

ELF THE MUSICAL

**book by Thomas Meehan and Bob Martin, music by
Matthew Sklar, lyrics by Chad Beguelin, based on the
film by David Berenbaum
December 6-30, 2018**

Meet Buddy, who was raised at the North Pole and believed he was one of Santa's elves until his enormous size and poor toy-making abilities could not be ignored. This modern holiday classic follows Buddy to the Big Apple where he discovers that his birth father is on the naughty list and his half-brother doesn't even believe in Santa! Buddy sets out to win over his new family and help New York City remember the true meaning of Christmas. A MAINE PREMIERE!

"...if you're wanting a bit of Christmas spirit - then this has got it by the sack-load."

Manchester Evening News



HONKY TONK LAUNDRY

by Roger Bean, musical arrangements by Jon Newton
January 31-February 24, 2019

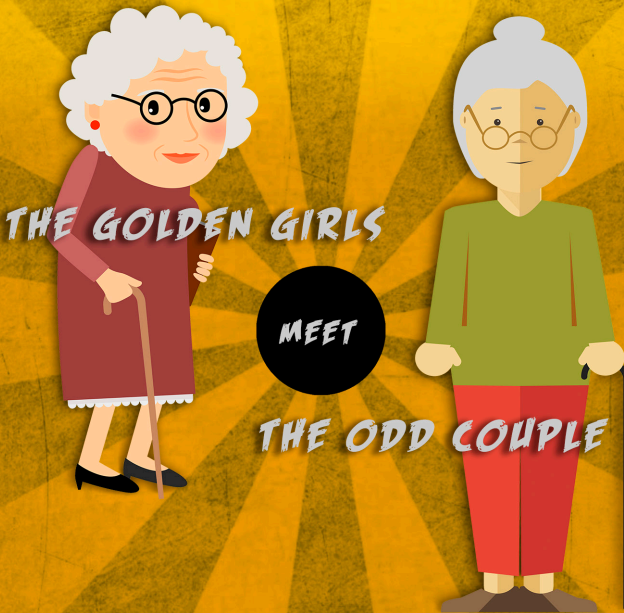
Move over Thelma and Louise! When Lana Mae Hopkins, owner of the Wishy Washy Washateria, hires Katie Lane Murphy to help out, they find themselves up to their elbows in soap, suds, and cheatin' hearts. Watch two country angels turn a humble laundromat into a boot-scootin' honky-tonk in a new musical featuring hits made famous by Reba McEntire, Carrie Underwood, The Dixie Chicks, Dolly Parton, Patsy Cline, Tammy Wynette, Loretta Lynn and more. A MAINE PREMIERE!

"YEE-HAW...foot-stompin' knee-slappin' fun!"
Los Angeles Examiner



RIPCORD

A NEW COMEDY BY **DAVID LINDSAY-ABAIRE**



RIPCORD

by **David Lindsay-Abair**

March 14-31, 2019

A sunny room on an upper floor is prime real estate in the Bristol Place Senior Living Facility, so when cantankerous Abby is forced to share her quarters with a new arrival, she determines to get rid of the infuriatingly chipper woman by any means necessary. *The Golden Girls* meets *The Odd Couple* when a seemingly harmless bet between the old women escalates into a dangerous game of one-upmanship that reveals their tenacity and deeper truths that cut to the heart.

"There's something for everyone in this laugh-out-loud comedy overflowing with massive amounts of heart."

Theater Mania



**NOT JUST A NEW MUSICAL
A NEW KIND OF MUSICAL**

**Music by Jeanine Tesori
Book and Lyrics by Lisa Kron
Based on the Graphic Novel by Alison Bechdel**

FUN HOME

**music by Jeanine Tesori, book and lyrics by Lisa Kron,
based on the graphic novel by Alison Bechdel
April 25 – May 12, 2019**

When her father dies, Alison dives into her past to tell the story of the man whose temperament and secrets defined her family and her life. Moving between past and present, she relives her unique childhood playing at the family's funeral home, her growing understanding of her own sexuality, and the looming, unanswerable questions about her father's hidden desires. Winner of five Tony Awards® including Best Musical, 2015. A MAINE PREMIERE!

*"A rare beauty, extraordinary and heart-gripping."
The New York Times*

Mark Your Calendar

Scenes & Songs

August 23, 2018

The Graduate

September 6 - 23, 2018

Wait Until Dark

October 18 - November 4, 2018

A Wrinkle in Time*

November 2 - 4, 2018

Elf the Musical

December 6 - 30, 2018

New Year's Eve Show

December 31, 2018

Honky Tonk Laundry

January 31 - February 24, 2019

Ripcord

March 14 - 31, 2019

Anne of Green Gables*

March 22 - 24, 2019

Fun Home

April 25 - May 12, 2019

Treasure Island*

May 17 - 19, 2019

Surprise Seventh Show

June 13 - July 7, 2019

***Dramatic Academy Youth Production**

❄️ ❄️ ❄️ **Holiday Show** ❄️ ❄️ ❄️

Join us in December for our holiday extravaganza:

Elf the Musical

Sunday	Monday	Tuesday	Wednesday	Thursday	Friday	Saturday
				Dec 6 *7pm	Dec 7 *7pm	Dec 8 5pm
Dec 9 3pm			Dec 12 7pm	Dec 13 7pm	Dec 14 7pm	Dec 15 1 & 7pm
Dec 16 3pm			Dec 19 7pm	Dec 20 7pm	Dec 21 7pm	Dec 22 1 & 7pm
Dec 23 10am			Dec 26 1pm	Dec 27 7pm	Dec 28 7pm	Dec 29 7pm
Dec 30 3pm						

***Reduced price preview \$31**

**Surprise 7th Show!
Stay tuned!**